



U.S. Department of the Interior  
Bureau of Land Management

# BLM's Wild Horse & Burro Program

Bruce Rittenhouse, Acting Division Chief, Wild Horse & Burro Program  
Wild Horse & Burro Advisory Board Meeting  
Boise, ID ~ July 10, 2019



John Axtell





# Presentation Outline



- WHB Program Goals
- Facts & Figures
- Organization & Infrastructure
- Programs/Partnerships
- Addressing the Challenges





# WHB Program Goals



- Maintain healthy herds on healthy rangelands
- Ensure the health and welfare of animals in our care
- Place excess animals into good homes

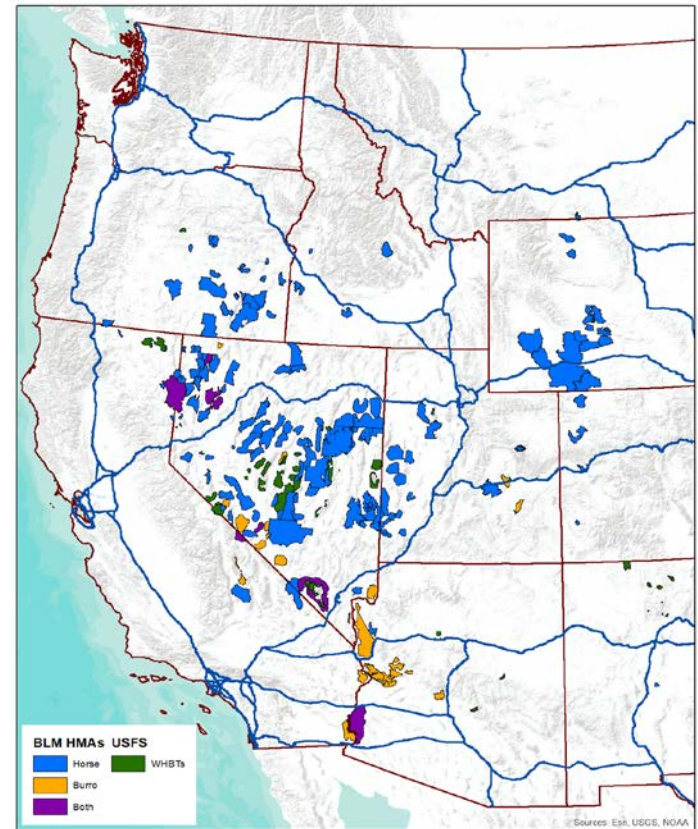




# Fact & Figures



- 10 Western states
- 177 Herd Management Areas (HMAs)
- 26.9 million acres of public rangelands
- 26,690 animals is the AML
- **88,000** animals on the range (March 2019)
- **48,000** animals in holding (May 2019)
  - 12,000 in corrals
  - 36,000 in pastures
- 4,609 adopted/sold in FY2018
- 11,472 removed from the range in FY2018

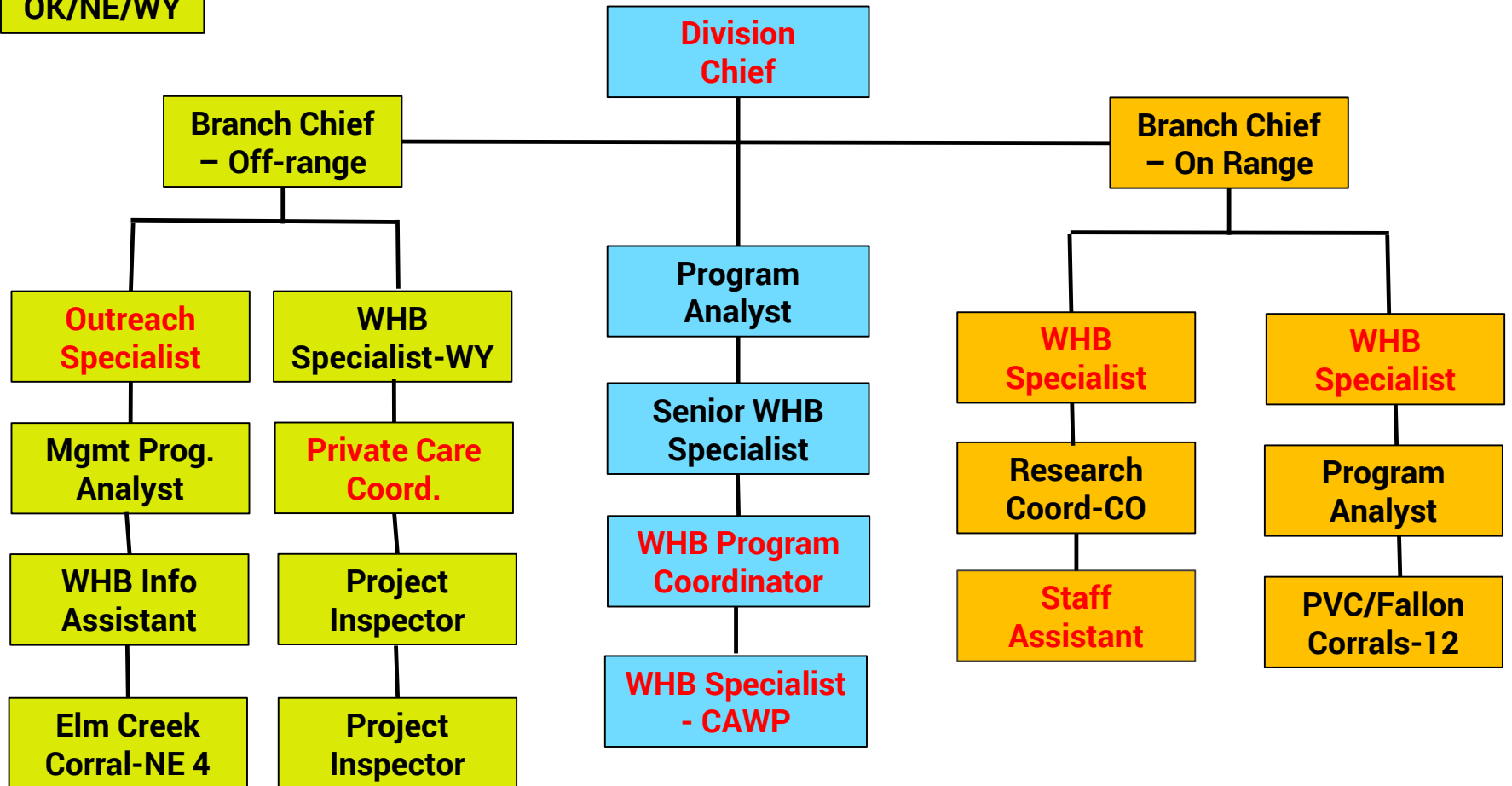




# Table of Organization

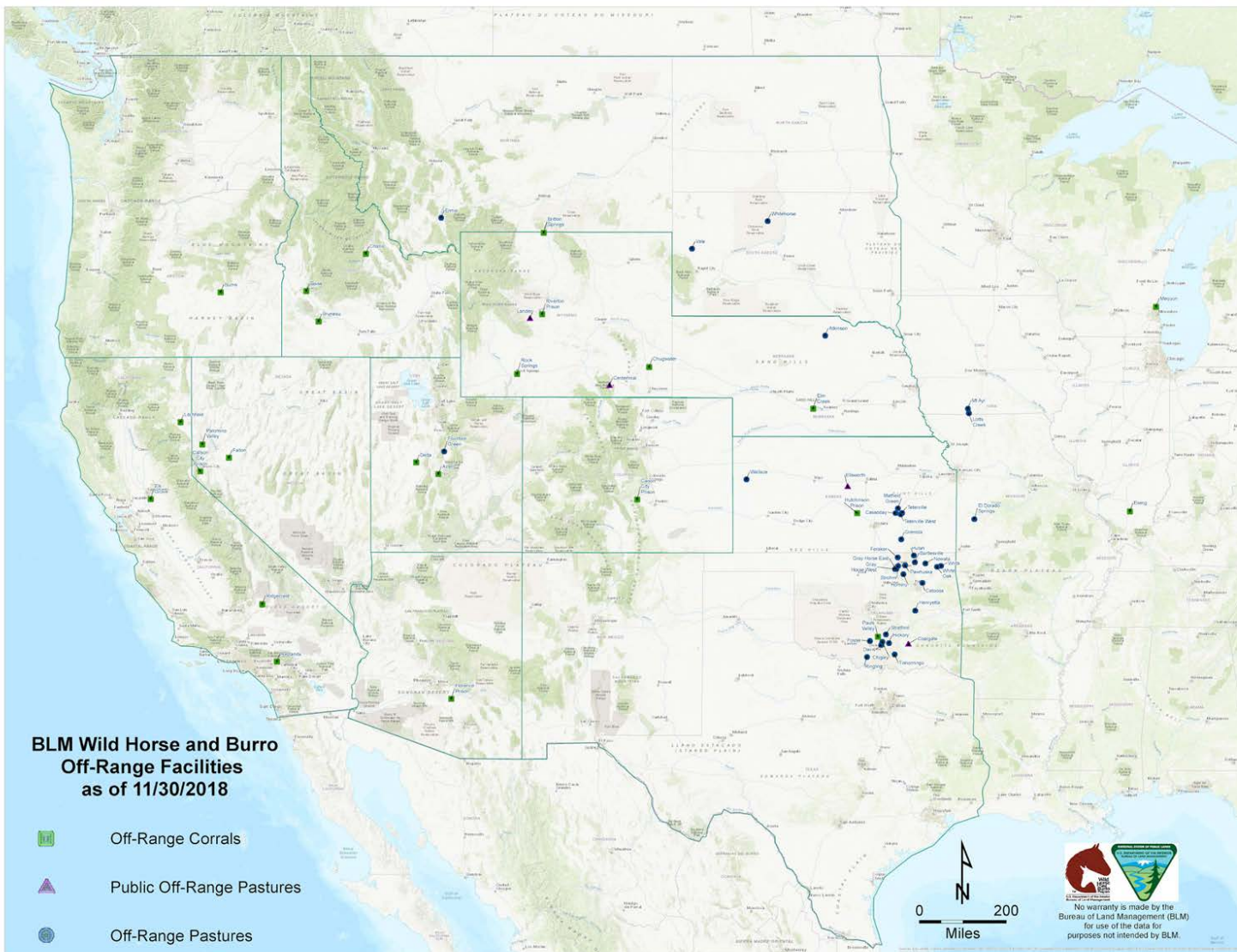


DC
NV/CO
OK/NE/WY



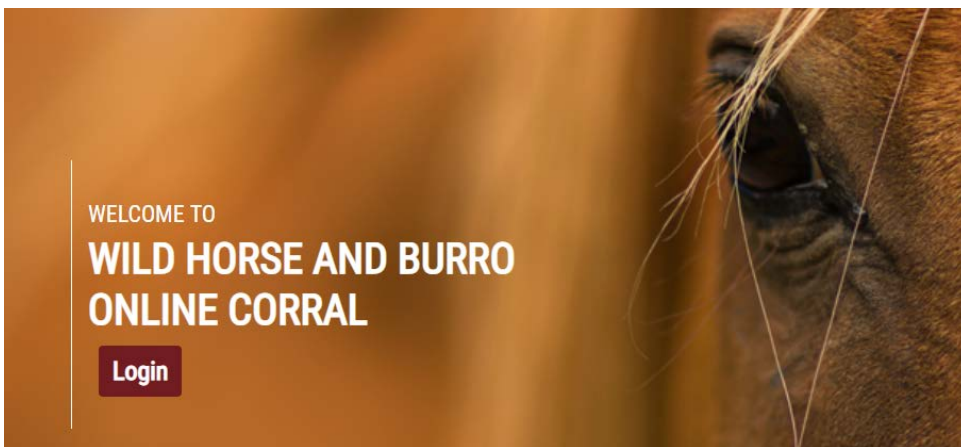


# Off-Range Corrals and Pastures





# Adoptions/Sales

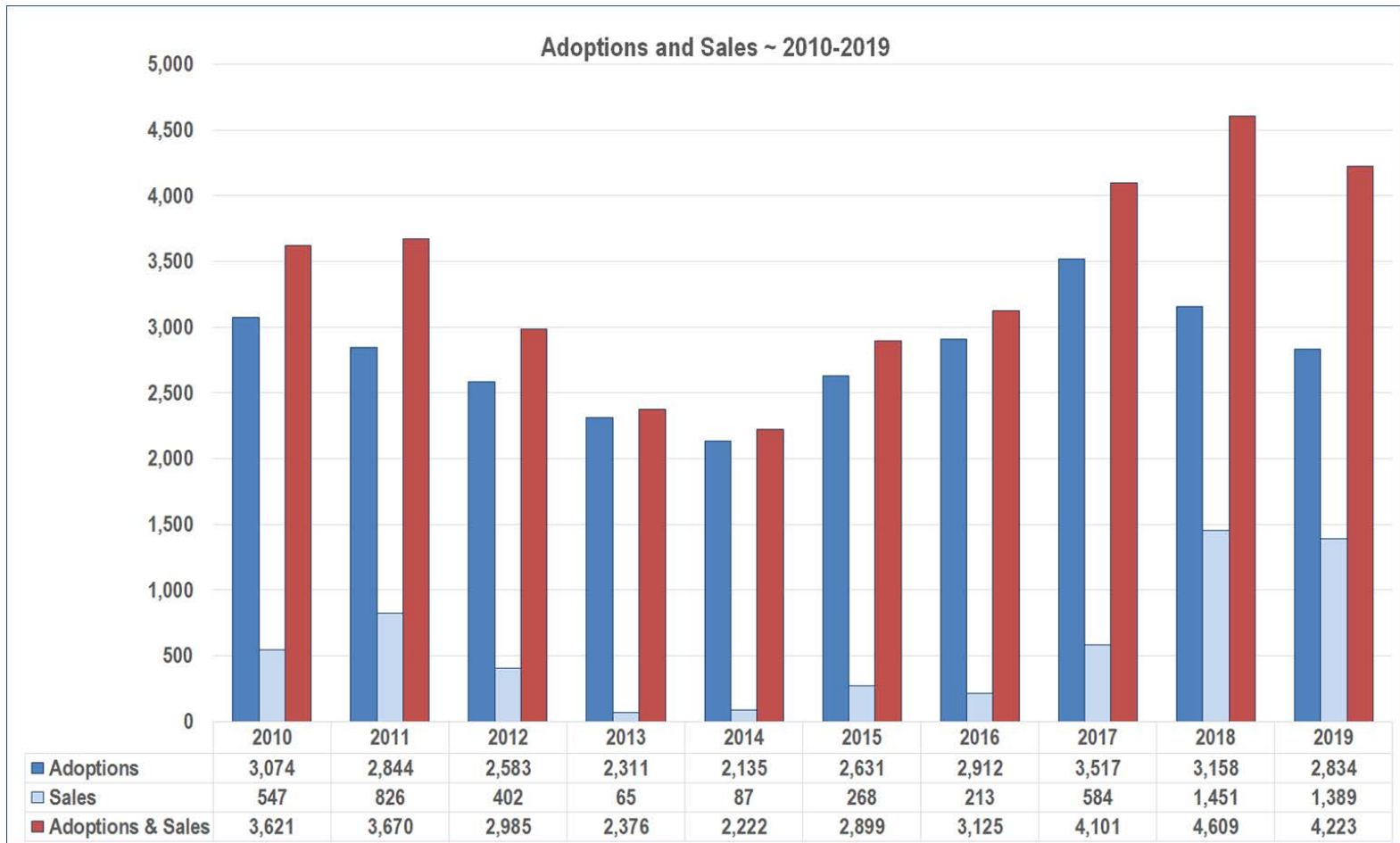


WELCOME TO  
**WILD HORSE AND BURRO  
ONLINE CORRAL**

Login



# Adoptions and Sales

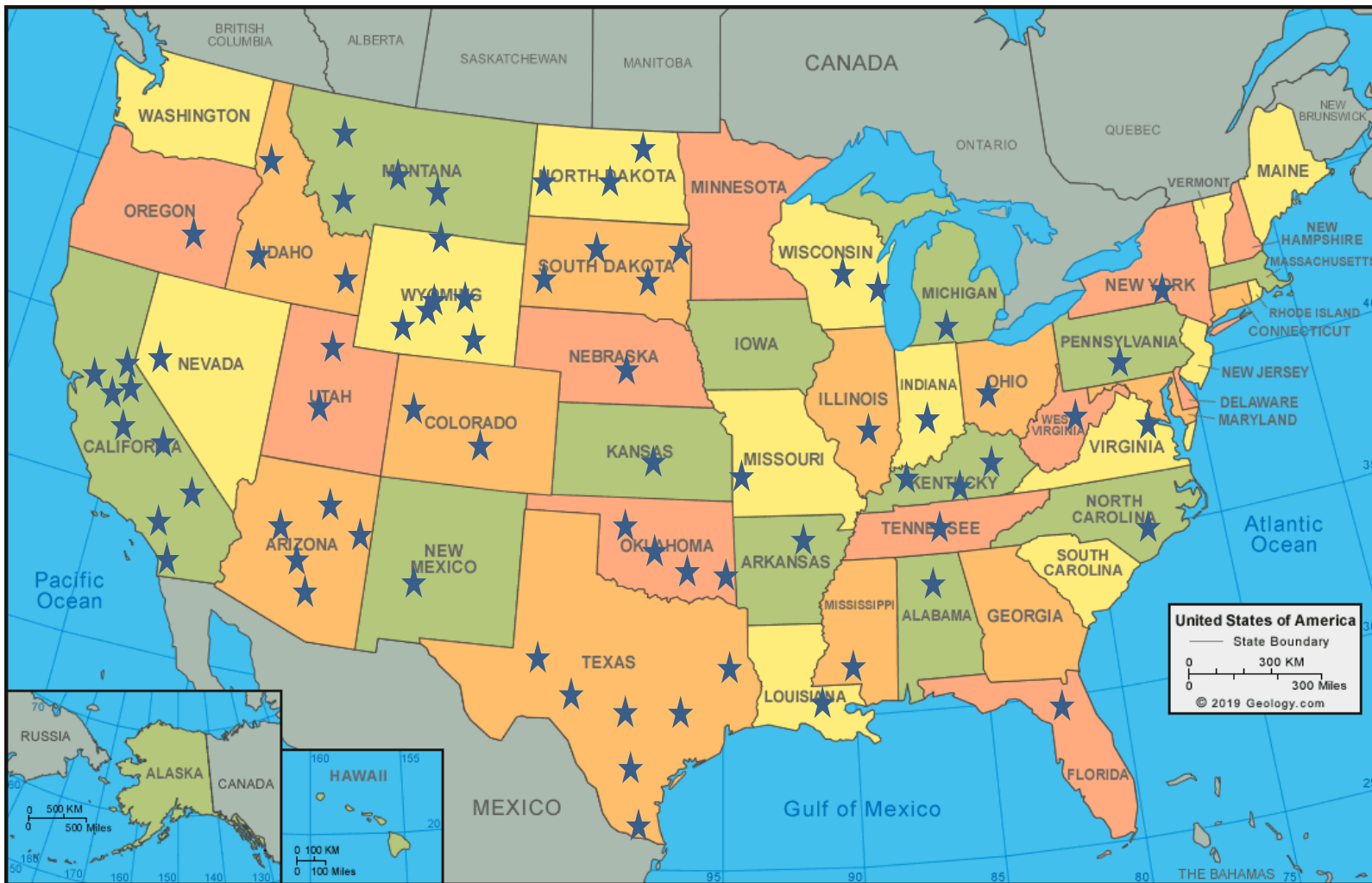


All years Fiscal (Oct. 1 - Sept. 30)  
FY19 figures current as of June 21, 2019





# Adoption/Sale Event Locations





# Adoption Incentive Program



- BLM begins realizing a cost savings in the first year of program
  - Encourage new individuals and organizations to adopt untrained wild horses or burros
  - Encourage prior adopters to consider adopting additional animals
  - \$1,000 incentive (\$500 at adoption and \$500 at title)
- >1,000 animals adopted through incentive program since inception



# Key Partnerships



- Increase efforts to train animals through partnerships

Mustang Heritage Foundation: 2,000/year



Inmate Training Programs





# Programs

- Youth
- Veterans
- Volunteers





# Research



## 1. Fertility Control

- Vaccine formulation & delivery, IUDs, spay & neuter, new methods, modeling



## 1. Improved understanding of WHB ecology

- Movements, Behavior, Safety

## 2. Improved survey methods





# Addressing the Challenges



- April 2018 BLM Report to Congress – “Management Options for a Sustainable Wild Horse and Burro Program”
- Consolidated Appropriations Act of 2019 – Asked BLM to submit additional analysis to 2018 Report – Due August 2019





# Questions

