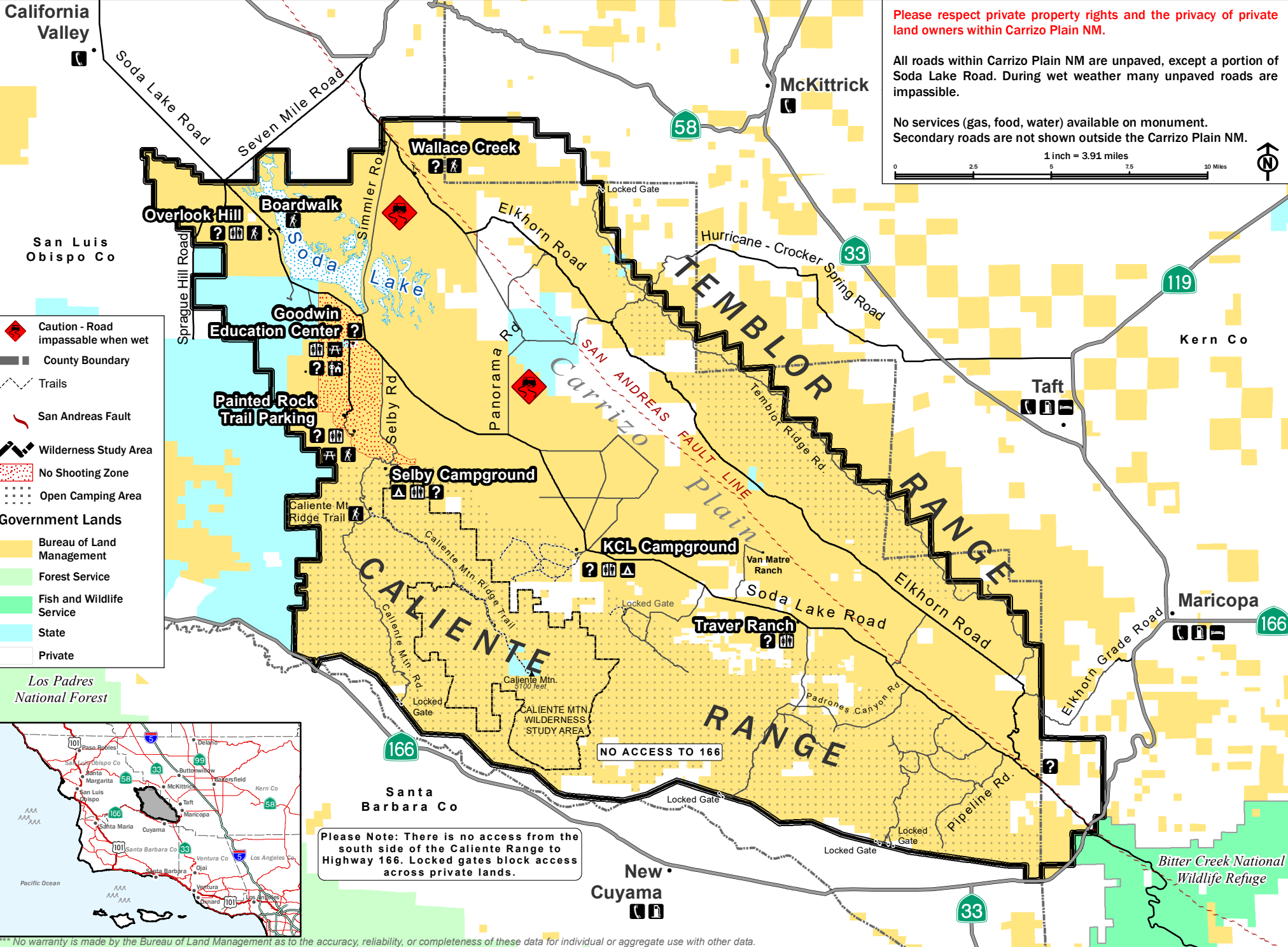


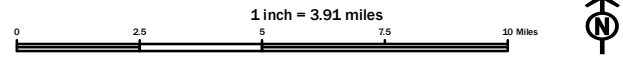
CARRIZO PLAIN NATIONAL MONUMENT



Please respect private property rights and the privacy of private land owners within Carrizo Plain NM.

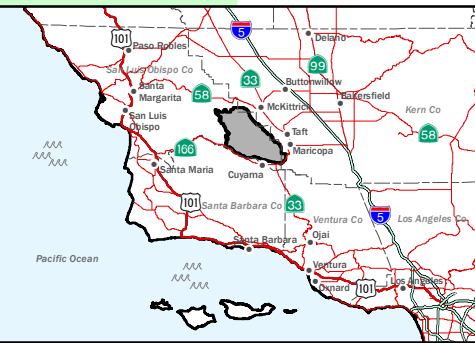
All roads within Carrizo Plain NM are unpaved, except a portion of Soda Lake Road. During wet weather many unpaved roads are impassible.

No services (gas, food, water) available on monument. Secondary roads are not shown outside the Carrizo Plain NM.



- Caution - Road impassible when wet
- County Boundary
- Trails
- San Andreas Fault
- Wilderness Study Area
- No Shooting Zone
- Open Camping Area
- Government Lands**
- Bureau of Land Management
- Forest Service
- Fish and Wildlife Service
- State
- Private

Los Padres National Forest



Please Note: There is no access from the south side of the Caliente Range to Highway 166. Locked gates block access across private lands.

NO ACCESS TO 166

*** No warranty is made by the Bureau of Land Management as to the accuracy, reliability, or completeness of these data for individual or aggregate use with other data.