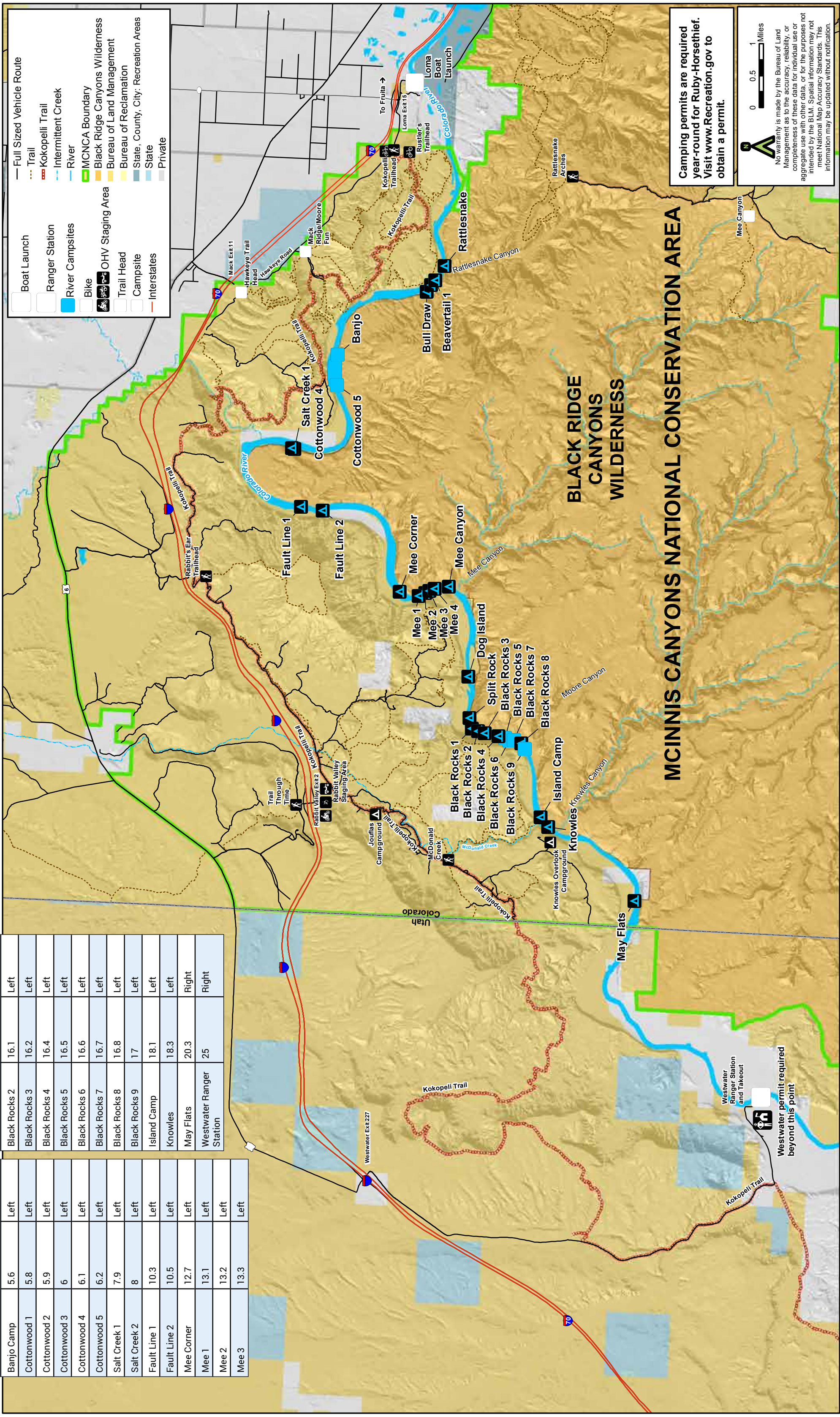


Ruby-Horsethief Canyons | Colorado River Campsites

Site	Mi from Loma	Side of River	Site	Mi from Loma	Side of River
Loma Boat Launch	0	Left	Mee 4	13.4	Left
Rattlesnake	3.2	Left	Mee Canyon	13.6	Left
Beaver Tail 1	3.5	Right	Dog Island	14.7	Left
Beaver Tail 2	3.6	Right	Split Rock	15.8	Left
Bull Draw	3.7	Left	Black Rocks 1	16	Left
Banjo Camp	5.6	Left	Black Rocks 2	16.1	Left
Cottonwood 1	5.8	Left	Black Rocks 3	16.2	Left
Cottonwood 2	5.9	Left	Black Rocks 4	16.4	Left
Cottonwood 3	6	Left	Black Rocks 5	16.5	Left
Cottonwood 4	6.1	Left	Black Rocks 6	16.6	Left
Cottonwood 5	6.2	Left	Black Rocks 7	16.7	Left
Salt Creek 1	7.9	Left	Black Rocks 8	16.8	Left
Salt Creek 2	8	Left	Black Rocks 9	17	Left
Fault Line 1	10.3	Left	Island Camp	18.1	Left
Fault Line 2	10.5	Left	Knowles	18.3	Left
Mee Corner	12.7	Left	May Flats	20.3	Right
Mee 1	13.1	Left	Westwater Ranger Station	25	Right
Mee 2	13.2	Left			
Mee 3	13.3	Left			



Camping permits are required year-round for Ruby-Horsethief. Visit www.Recreation.gov to obtain a permit.

0 0.5 1 Miles

No warranty is made by the Bureau of Land Management as to the accuracy, reliability, or completeness of these data for individual use or aggregate use with other data, or for the purposes not intended by the BLM. Spatial information may not meet National Map Accuracy Standards. This information may be updated without notification.

BLACK RIDGE CANYONS WILDERNESS

MCINNIS CANYONS NATIONAL CONSERVATION AREA

Permit Information

Overnight camping permits are required year-round and must be reserved in advance. Visit [Recreation.gov](https://www.recreation.gov) to make a reservation for one of the 34 campsites. Groups may only camp at their reserved site.

All permit reservations include a \$6 non-refundable fee.

April 1 through October 31: fees are based on group size.

- Maximum group size is 25 including adults, children, and dogs.
- Children 16 and under camp free, but are included in the group size.
- Groups are allowed a maximum of two dogs.

NUMBER OF ADULTS AND DOGS*	FEE
1-5	\$20 per night, per camp
6-14	\$50 per night, per camp
15-25	\$100 per night per camp

*Children 16 and under camp for free
Example: 5 children + 2 adults + 1 dog = group size of 8 at \$20 per night, per camp

November 1 through March 31: No camping fee, but a reservation fee is charged.

You may cancel your permit at any time but must cancel at least eight days in advance to receive a refund of camping fees. Please note that once printed, your permit cannot be edited.



Photo by Andy Dao

River Requirements and River Etiquette

- Please refer to [Recreation.gov](https://www.recreation.gov) for requirements on waste containment systems, fires, and other important information.
- Pack it in, pack it out.
- Target shooting is prohibited in McInnis Canyons National Conservation Area. Hunting is allowed in accordance with Colorado Parks and Wildlife regulations.
- Strain dishwater and pick up all scraps to prevent "micro-trash" that attracts bugs and animals.
- Leave what you find. It is illegal to deface or remove any historical, archaeological, or paleontological resources.
- Leave room for others, including jet boats which require deeper water at boat put-ins and take-outs by consolidating gear and quickly moving vehicles off the ramp.
- Keep dogs on a leash in high-use areas such as campsites, boat put-ins, take-outs, and in the Mee Canyon, and Black Rocks sections of the river.
- Motorized use is allowed. Slow down and yield to non-motorized crafts.
- Upstream motorized travel is prohibited in Utah.
- Boating Westwater Canyon in Utah requires a separate permit, please call the Westwater Canyon Permit Line at 435-259-7012, Monday-Friday from 8:00 a.m. to noon. For questions, please contact the Moab Field Office at 435-259-2100.



The Leave No Trace Seven Principles

-  PLAN AHEAD AND PREPARE
-  TRAVEL AND CAMP ON DURABLE SURFACES
-  DISPOSE OF WASTE PROPERLY
-  LEAVE WHAT YOU FIND
-  MINIMIZE CAMPFIRE IMPACTS
-  RESPECT WILDLIFE
-  BE CONSIDERATE OF OTHER VISITORS



Photo by BLM

The Ruby-Horsethief section of the Colorado River from Loma, Colorado to Westwater, Utah is a 25-mile stretch of mostly flat water with some Class I and II rapids.

Most of Ruby Canyon cuts through sandstone and shale dating from the Mesozoic Era, the age of the Dinosaurs. The Black Rocks section, however, reveals Precambrian granite and gneiss that are up to 1.8 billion years old, similar in age and composition to what is found within the Black Canyon of the Gunnison and at the bottom of the Grand Canyon.



Photo by Andy Dao

Contact Information

BLM Grand Junction Field Office
 2815 H Rd
 Grand Junction, CO 81506
 970-244-3000

To acquire a permit please use [Recreation.gov](https://www.recreation.gov)

BLM/CO/GI-19/006



NATIONAL CONSERVATION LANDS

Floating Ruby-Horsethief Canyons

McInnis Canyons
 National Conservation Area

Directions to the Loma Boat Launch

From Grand Junction: Take I-70 west to Loma exit (Exit # 15). Cross over I-70 heading south, at the T-intersection go left. Follow the road around the corner.

Directions to the Westwater Take-Out

From Grand Junction: Take I-70 west. Travel west for approximately 28 miles. Once across the Utah state line, you will travel another 4.5 miles to the Westwater exit 277. At the off-ramp go left (South) for 9 miles to the Westwater Ranger Station.

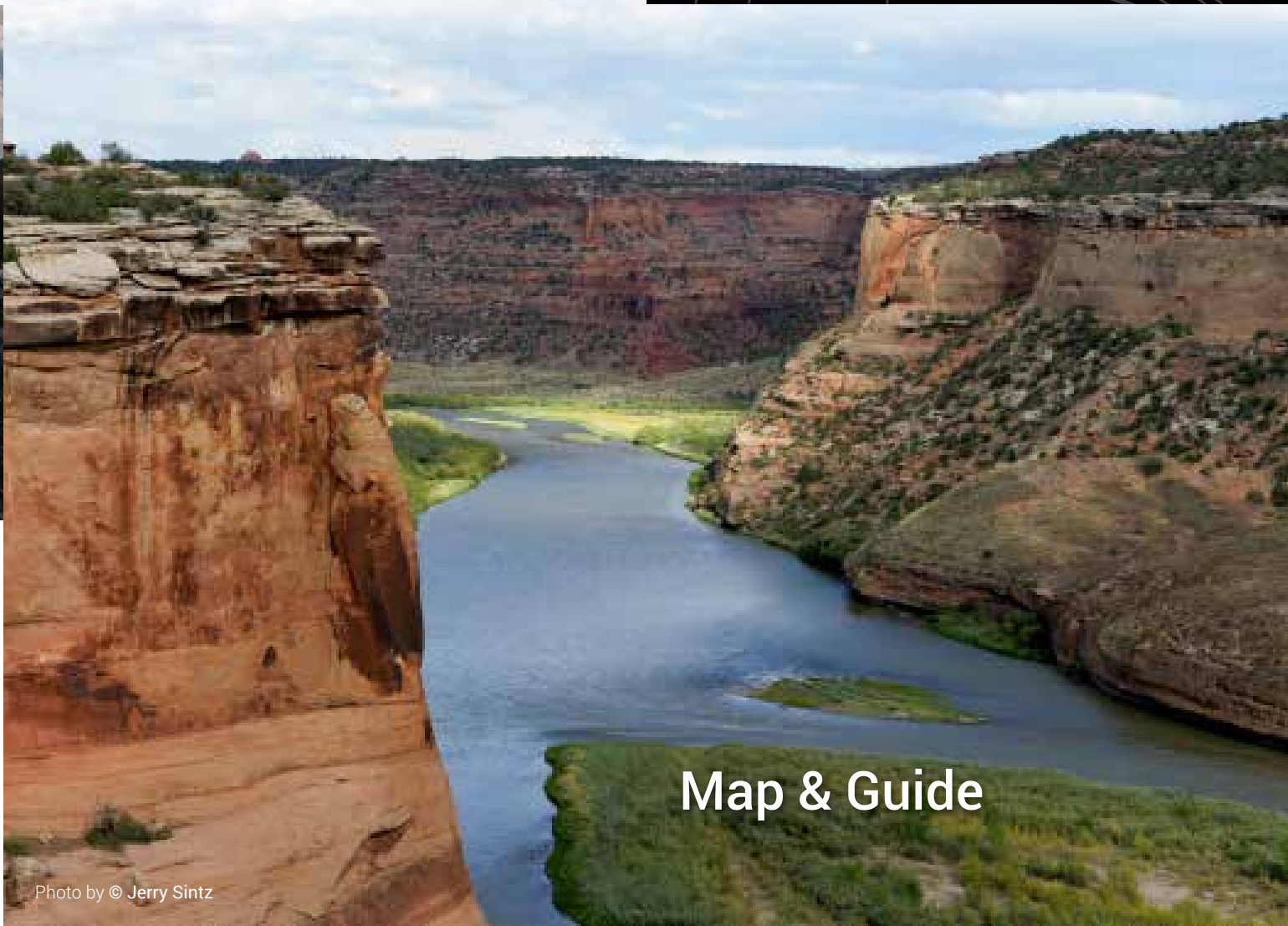


Photo by © Jerry Sintz

Map & Guide