

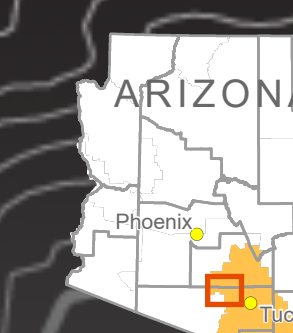
U.S. DEPARTMENT OF THE INTERIOR
BUREAU OF LAND MANAGEMENT

Ironwood Forest National Monument

Tucson Field Office

You can get this geo-referenced map on your mobile device! Scan the QR code at right or download at www.blm.gov/maps

BLM Tucson Field Office
3201 E. Universal Way, Tucson, AZ
520-258-7200



Series #1004-01-01

Transportation

- Interstate
- County Road
- Local Road*
- Connecting Route*
- Primitive Road
- Administrative Route
- Railroad
- Trail

Jurisdictions and Boundaries

- Ironwood Forest National Monument Boundary
- BLM Tucson Field Office Boundary
- Bureau of Land Management (BLM)
- Bureau of Reclamation (BOR)
- Local or State Park
- Military Reservation
- National Park (NPS)
- Private Land
- State Land
- Tohono O'Odham Nation
- Wilderness Area (NPS)
- County Boundary

Reference and Topography

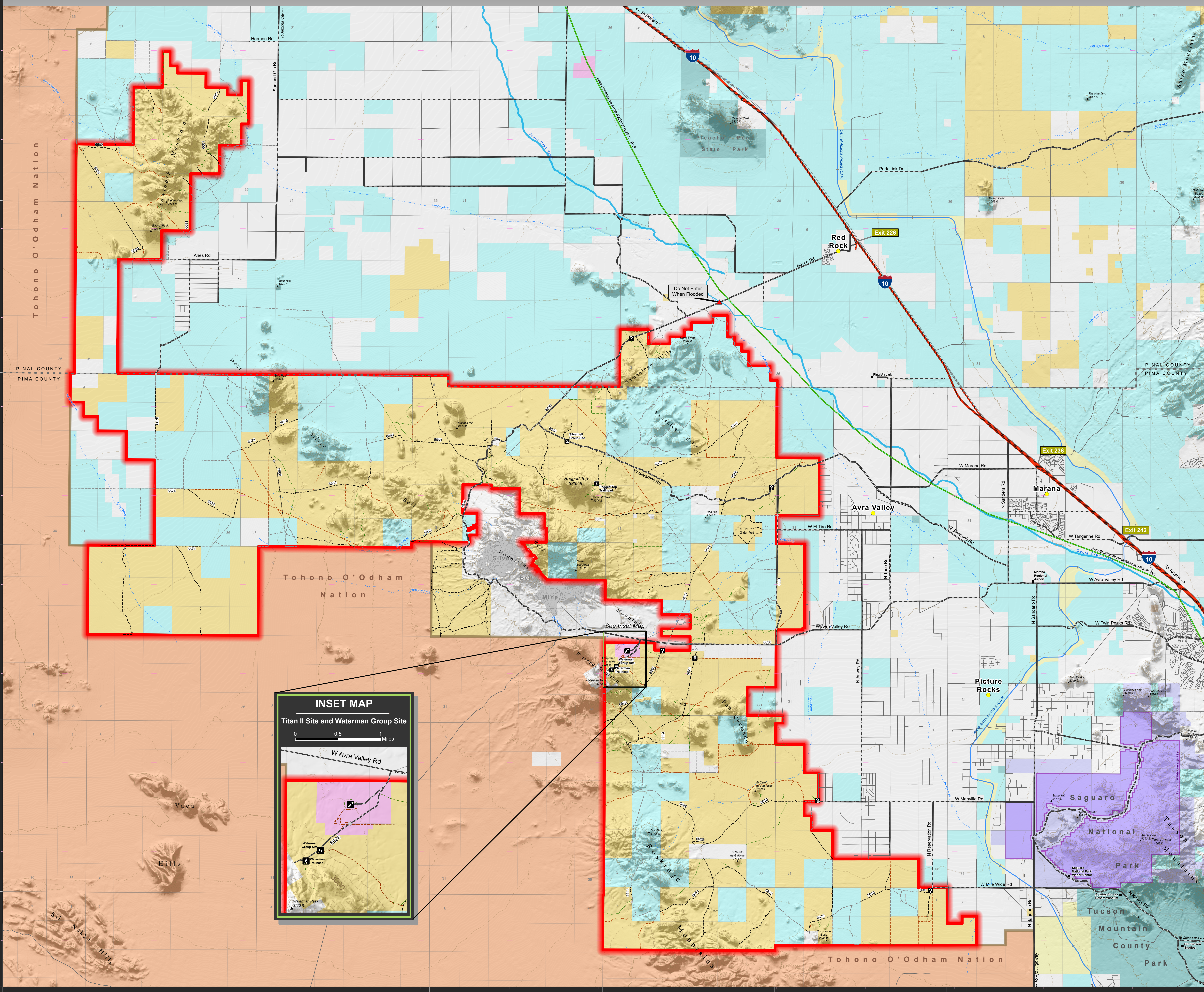
- Information Kiosk
- Group Site
- Day Use Site
- Trailhead
- Point of Interest
- Reference Point
- Index Contour (500 ft.)
- Contour (100 ft.)
- CAP Canal
- Wash
- Township/Range
- Section
- Summit
- Populated Place
- Exit
- Interstate Exit
- Cattleguard
- Mined Land
- UTM Grid

Transportation Route Designations:
County Road - Existing road maintained by Pima or Pinal County. Accessible by passenger vehicle.
Local Road - Some routes across private property may not have legal public access, and users should stay on the road. Routes are displayed for information purposes and do not grant access across non-BLM lands.
Primitive Road - Minimally maintained routes. 4WD high-clearance vehicles recommended.
Administrative Route - Administrative vehicles only. Route open to mechanized non-motorized public travel (bicycle, pedestrian, horseback riding).
Trail - Maintained for non-mechanized and non-motorized access. Pedestrian and horseback riding accessible.

*Travel routes depicted on this map across Arizona State Trust Lands or private lands do not imply legal public access to use or cross those lands. Any public use of State Trust Lands is strictly under the jurisdiction of the Arizona State Lands Department and use of private lands requires permission of the landowner. All users must comply with State policies and regulations and private landowner rights in order to legally use or traverse non-BLM lands.

DISCLAIMER: While every effort has been made to ensure the quality of the information presented, the Bureau of Land Management (BLM) makes no warranty regarding the accuracy or completeness of this map. This map and data are representational and are to be used as intended by the BLM. Map data are compiled from various sources. This map and the data from it were derived as not being on the BLM and may be revised at any time. Produced July 2003.

0 5 Miles 0 5 Kilometers



T. 9 S.
T. 10 S.
T. 11 S.
T. 12 S.
T. 13 S.
T. 14 S.

T. 9 S.
T. 10 S.
T. 11 S.
T. 12 S.
T. 13 S.
T. 14 S.

R. 5 E. R. 6 E. R. 7 E. R. 8 E. R. 9 E. R. 10 E. R. 11 E. R. 12 E.