



U.S. Department of the Interior
Bureau of Land Management

Wild Horse and Burro Program Update

2022 National Wild Horse and Burro Advisory Board Meeting Phoenix, Arizona

Holle' Waddell, Division Chief, Wild Horse and Burro Program





Legal Authorities

Wild Free-Roaming Horses and Burros Act, 1971

- Protect and manage wild horses and burros “as components of public lands”
- Maintain a “thriving natural ecological balance”

Federal Land Policy and Management Act, 1976

- Established BLM “multiple-use” mission
- Allowed for motorized vehicles for wild horse and burro management



U.S. Department of the Interior
Bureau of Land Management





Program Objectives

- To manage wild horses and burros as an integral part of the natural system of public lands
- Goal: **healthy herds on healthy public lands**



Photo Credit Jerry Sintz

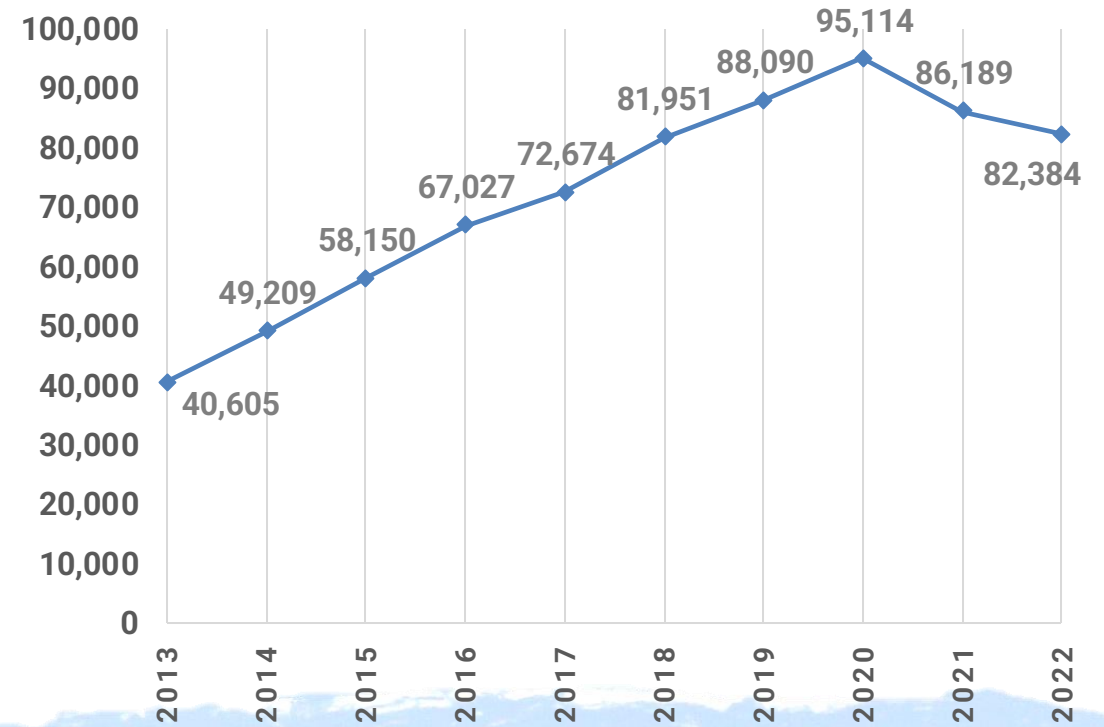


Estimated population size

Estimated Wild Horse and Burro Populations on BLM-managed Public Lands as of March 1, 2022

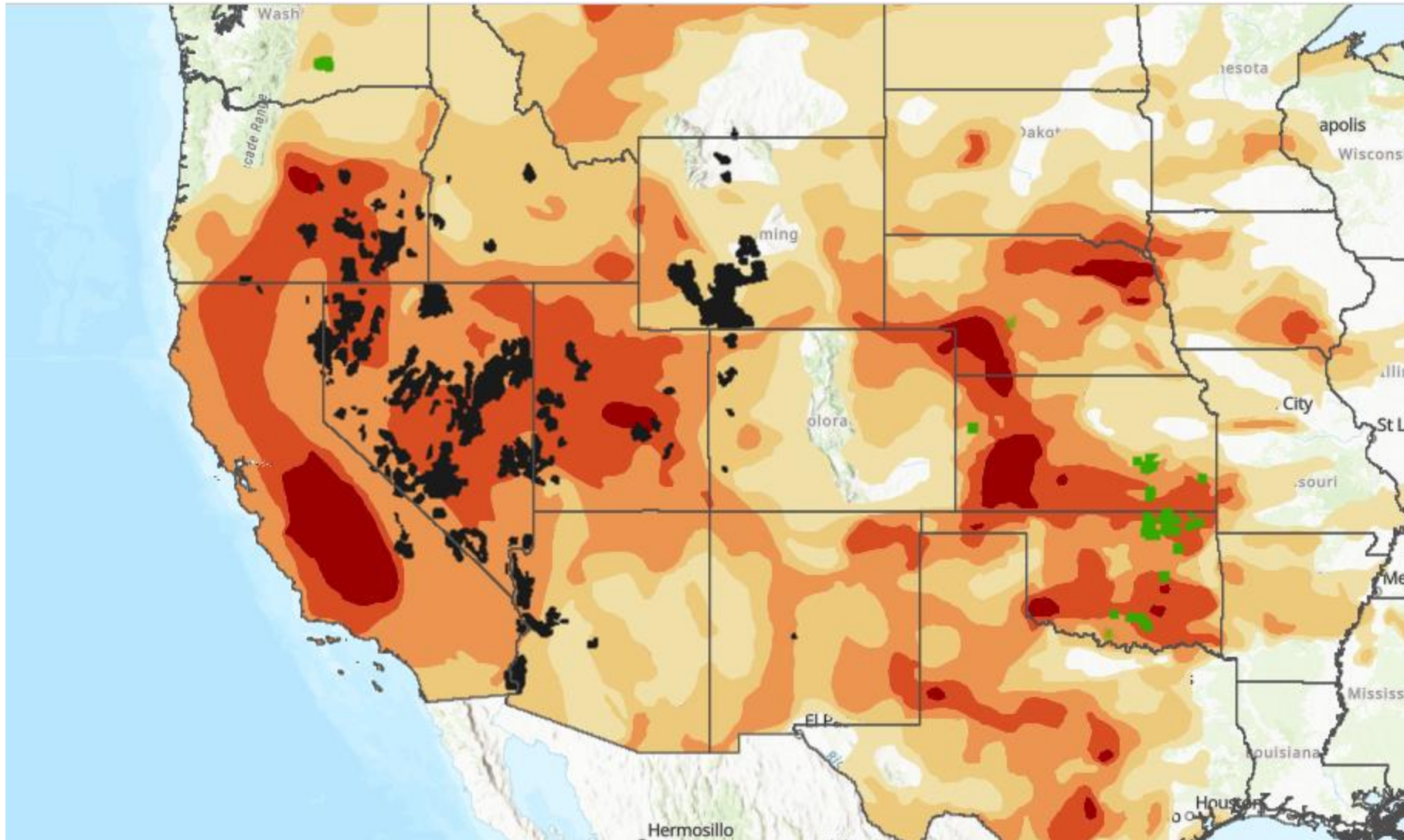
State	Total	Max. AML	Excess
Arizona	9,496	1,676	7,820
California	10,140	2,200	7,940
Colorado	1,873	827	1,046
Idaho	555	617	-62
Montana	195	120	75
Nevada	46,570	12,811	33,759
New Mexico	272	83	189
Oregon	4,532	2,700	1,832
Utah	4,017	1,956	2,061
Wyoming	4,734	3,795	939
Total	82,384	26,785	55,599

Estimated Wild Horse and Burro Populations on BLM-managed Public Lands, 2013-2022





US Drought Monitor and HMA/ORP locations, September 13



- Herd management areas
- Off-range pastures



Triple B Complex, Nevada



Jackson Mountain HMA, Nevada



Outside Chemehuevi HMA, CA



On-Range Program Update

Summary of FY22 On-Range Operations*

Animals Gathered	Animals Removed	Animals Treated
20,851	19,011	1,558

*Estimated, not final. Data as of September 19, 2022

On-Range Program Updates

- Gather Observation Protocol published
- Catch-treat-hold-release fertility control contract(s) in development
- Public funding opportunity could support additional on-range operations in FY23
- Strategic Research Plan published
- New research projects focused on fertility control and environment





Off-Range Program Update

Summary of FY22 Off-Range Operations*

Adoptions	Sales	Transfers	Compliance	Titled
6,265	1,031	24	6,472	4,957

Wild Horse and Burro Adoptions*

Adoption Incentive	No incentive/trained
2,841	3,424

Off-Range Holding**

Corrals	Pastures	Public Pastures	Total
22,951	39,803	1,168	63,922



*Estimated, not final. Data as of September 16, 2022

**As of September 2022



Off-Range Program Update

- Online Corral held six adoption/sale events that offered 1,544 animals, of which 849 were placed into private care.
- Mustang Heritage Foundation partnership placed 3,412 animals into private care; representing 48% of total placements by end of August.
- Began evaluating pasture proposals received from a 2021 solicitation for additional off-range space.
- Re-evaluation of the Adoption Incentive Program to better secure the health and safety of adopted animals, including issuing new policy and convening stakeholder workshops.





HQ-Issued Policies/Bulletins in FY22

Gather planning, scheduling and approval

- Establishes policy for planning and scheduling of proposed WHB gathers
- “Identification and consideration of population growth suppression methods will be required in all gather planning efforts.”

Adoption Incentive Program

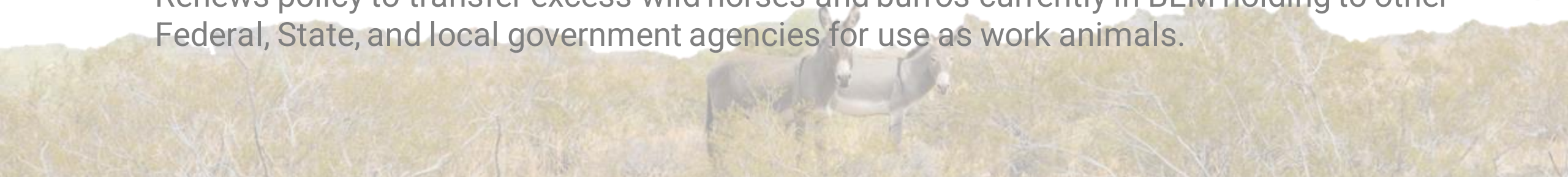
- Implements additional safeguards to ensure animals go to good homes

Strategic Research Plan

- Outlines WHB research goals to support management
- Identifies temporary fertility control and environmental research as top priorities

Transfer authority

- Renews policy to transfer excess wild horses and burros currently in BLM holding to other Federal, State, and local government agencies for use as work animals.

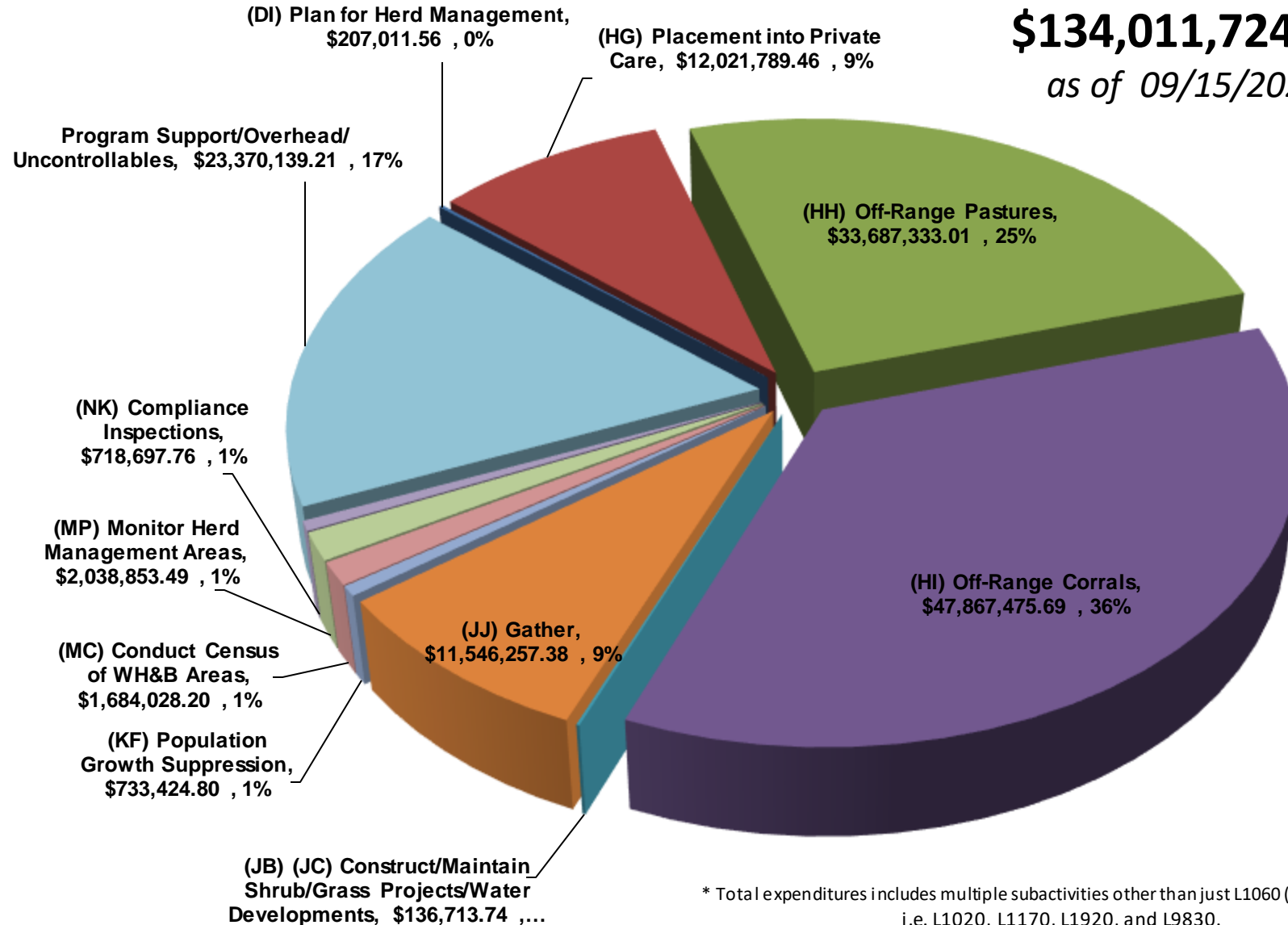




FY 2022 Expenditures *

\$134,011,724.30

as of 09/15/2022



* Total expenditures includes multiple subactivities other than just L1060 (WHB Program), i.e. L1020, L1170, L1920, and L9830.



President's Budget FY2023

The President's budget for FY 2023 is \$153.1 million
This budget will assist the BLM with addressing excess WHB population challenge

- The BLM will continue On-range actions that assist in curtailing overpopulation throughout the West and assess its management options to best contain population growth.
- The BLM and its partners continue to support the use of fertility control to slow herd growth, which is most effective once a population is at or near its appropriate management level (AML).
- Off-range holding and caring of animals, consuming over 60 percent of the WHB budget. Focus on moving animals from corrals to more cost efficient off-range pastures.
- Continue with private care placement including Adoption Incentive Program.



Questions?



Credit: Frank Sorger