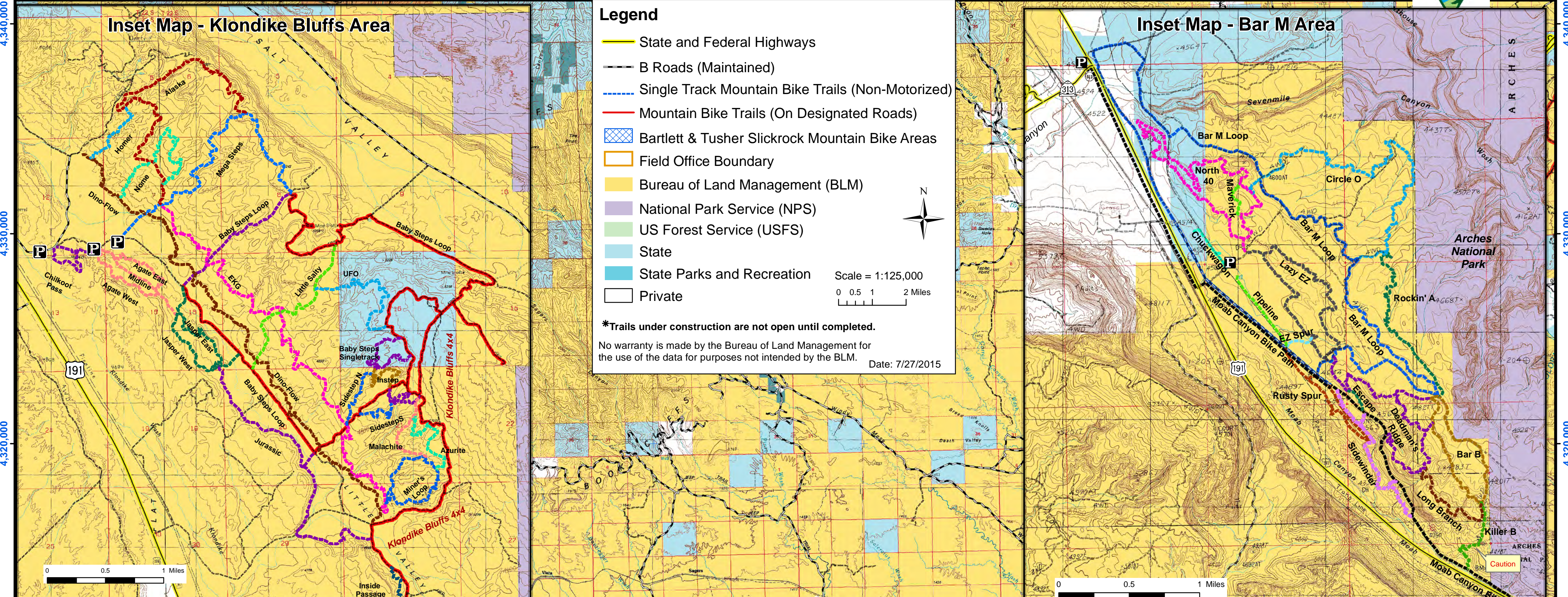


# Mountain Bike Trails in the Moab Field Office, Bureau of Land Management



590,000 600,000 610,000 620,000 630,000 640,000 650,000 1,000

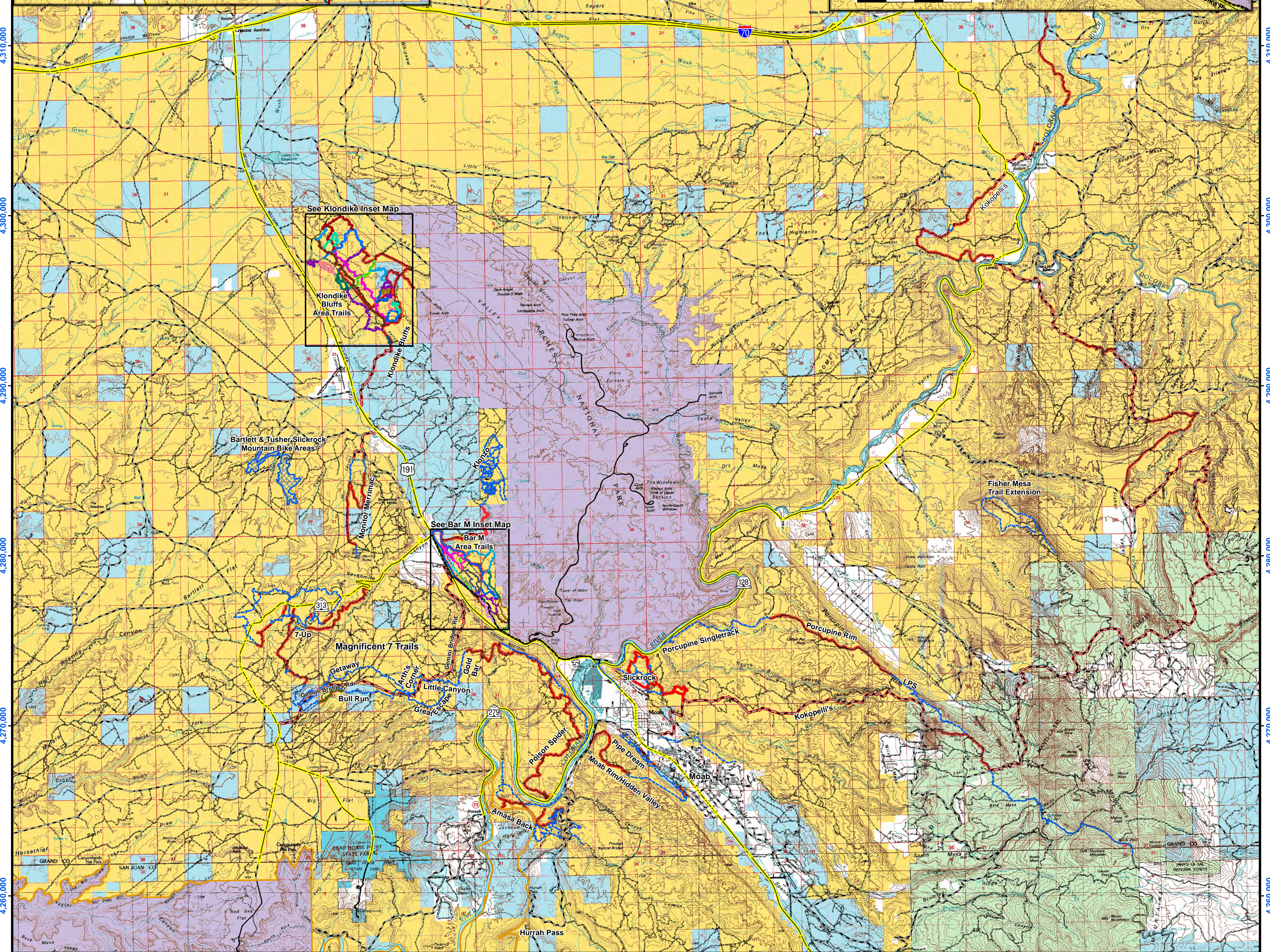


**Legend**

- State and Federal Highways
- - - B Roads (Maintained)
- - - Single Track Mountain Bike Trails (Non-Motorized)
- Mountain Bike Trails (On Designated Roads)
- Bartlett & Tusher Slickrock Mountain Bike Areas
- Field Office Boundary
- Bureau of Land Management (BLM)
- National Park Service (NPS)
- US Forest Service (USFS)
- State
- State Parks and Recreation
- Private

Scale = 1:125,000  
0 0.5 1 2 Miles

\*Trails under construction are not open until completed.  
No warranty is made by the Bureau of Land Management for the use of the data for purposes not intended by the BLM. Date: 7/27/2015



590,000 600,000 610,000 620,000 630,000 640,000 650,000 660,000