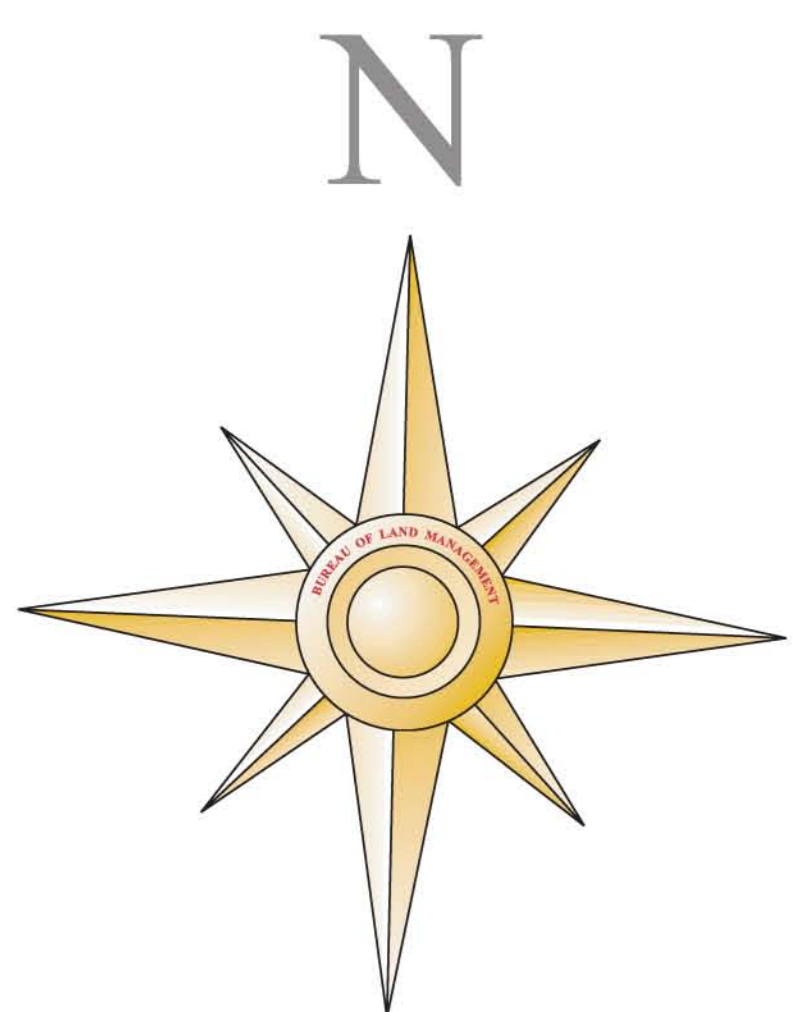


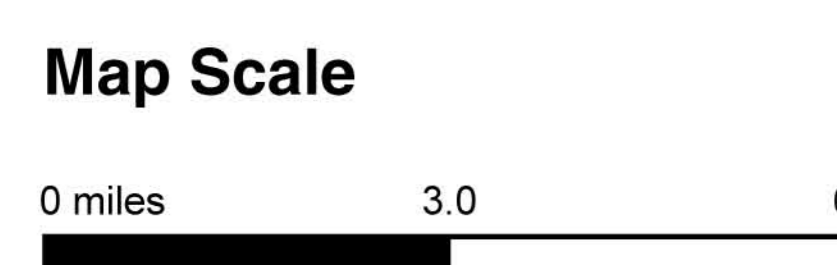
BRUNEAU-JARBIDGE RIVERS WILDERNESS

March 30, 2009



- Map Legend**
- Wilderness
 - Paved Road
 - Improved Dirt or Gravel Road
 - Primitive Road
 - Pipeline
 - Powerline
 - Wild and Scenic River
 - Stream (perennial)
 - Stream (intermittent)
 - Lake or Reservoir
 - Township and Range
 - State Boundary
 - Idaho Centennial Trail
 - Trailhead
 - Camping
 - Launch Site
 - YOU ARE HERE

- Land Status**
- Bureau of Land Management
 - Private
 - State of Idaho
 - Military Reservation
 - Indian Reservation
 - Forest Service



Some roads cross private land and permission from landowners may be required for access.

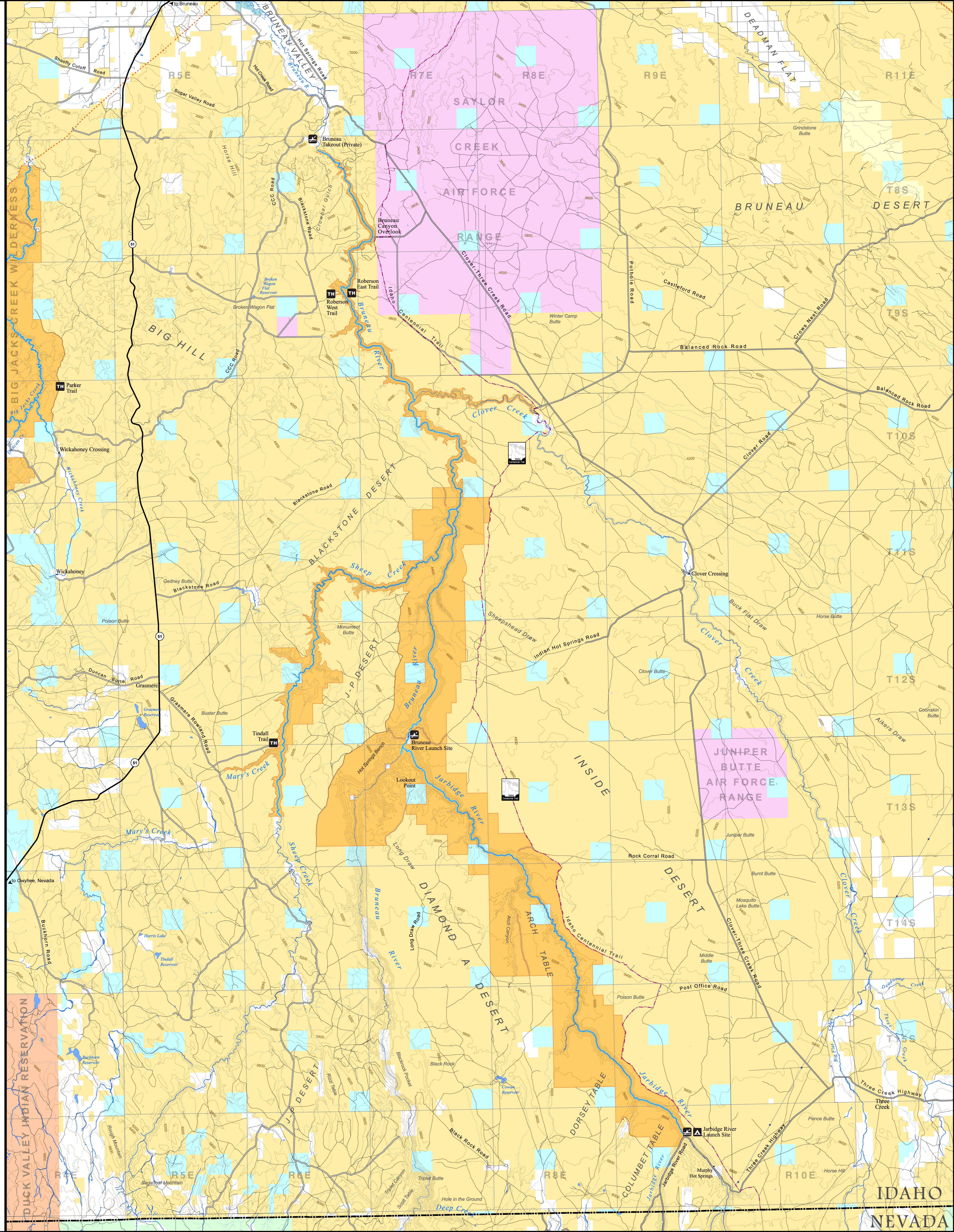
Warning: inclement weather can make road surfaces impassable. Travel on unpaved routes should only be made in properly equipped vehicles, and under good weather conditions. This is an extremely remote region. Plan ahead. Take precautions. Patrols are infrequent.

Map Projection: Universal Transverse Mercator Zone 11, North American Datum 1983, meters.

No warranty is made by the Bureau of Land Management (BLM). The accuracy, reliability, or completeness of these data is not guaranteed. Map Date: June 9, 2009

Cartography by the Bureau of Land Management, Boise District, Geographic Sciences.

U.S. Department of the Interior
Bureau of Land Management



IDAHO
NEVADA