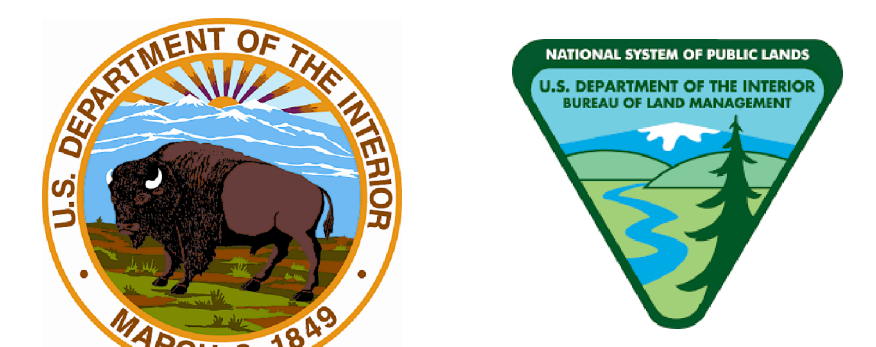
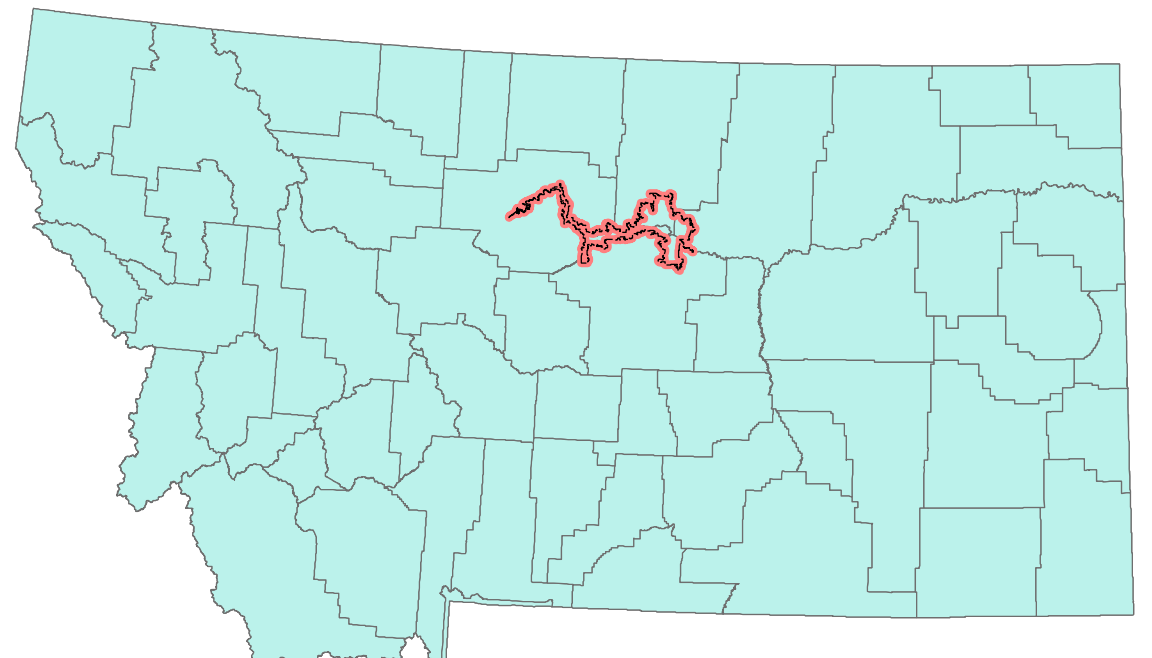


Upper Missouri River Break National Monument Transportation Map West Half



Legend

- Boundaries**
 - Wilderness Study Area (WSA)
 - Area of Critical Environmental Concern (ACEC)
 - County Boundary
- National Trails System**
 - Nez Perce National Historic Trail
 - Lewis & Clark National Historic Trail
- Surface Ownership**
 - Upper Missouri River Breaks National Monument
 - Bureau of Indian Affairs
 - Bureau of Land Management (BLM)
 - BLM - Land Utilization
 - Private
 - State
- BLM Road System**
 - Closed BLM Road
 - Open BLM Road
 - Landowner Permission Required to Access Open BLM Road
 - Limited BLM Road within the Monument
 - Landowner Permission Required to Access Limited BLM Road
 - Landowner Permission Required*
 - County Roads, Highways, and CMR National Wildlife Refuge Road
 - Open State Land Road
 - Landowner Permission Required to Access State Road
- Limited BLM Road Designations**
 - A - Open April 1 to November 30 (Closed December 1 to March 31 - Big Game Winter Range)
 - B - Open December 1 to August 31 (Closed September 1 to November 30 - Wildlife Habitat Security; Game Retrieval Allowed from 10:00 a.m. to 2:00 p.m. and Closed December 1 to March 31 - Big Game Winter Range)
 - C - Open April 1 to August 31 (Closed September 1 to November 30 - Wildlife Habitat Security; Game Retrieval Allowed from 10:00 a.m. to 2:00 p.m. and Closed December 1 to March 31 - Big Game Winter Range)
 - D - Open September 1 to November 30 - Access for Hunting Opportunities; (Closed December 1 to August 31)
- Recreation Sites**
 - Ferry
 - Trailhead
 - Visitor Center
 - Cabin
 - Day Use Site
 - BLM Contact Station
 - Hiking Trail
 - Developed Campground
 - Primitive Campground
 - Lanching Ramp
 - Restrooms
 - Recreation Site - See Inset
 - Airstrip



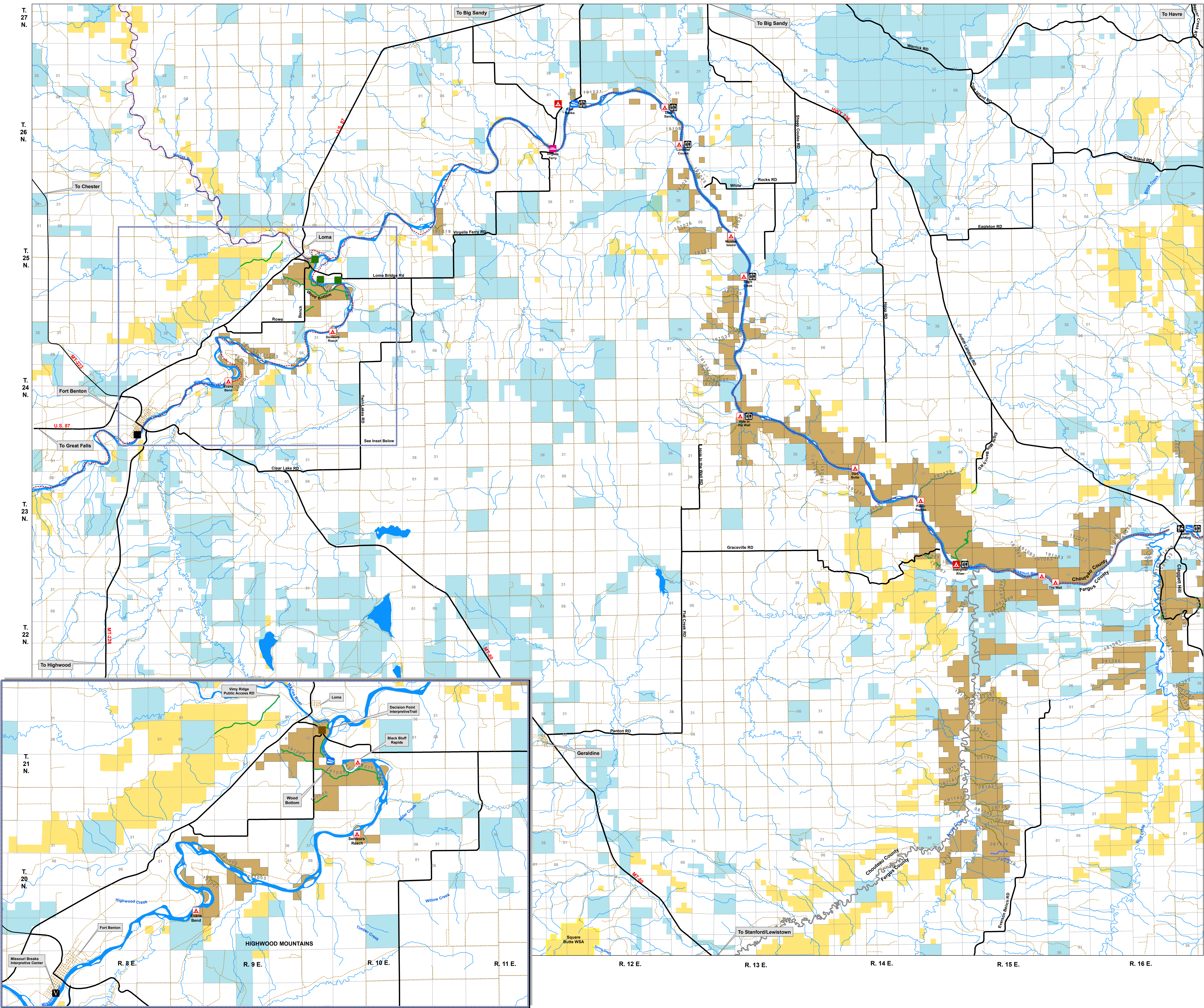
0 0.5 1 2 3 4 Miles

1:86,320

* Public Land intervened by private lands may not have public access. Permission is required from the private landowner to cross private land, unless access is provided by a Federal, State, or County road, or a BLM road with legal access.

No Warranty is made by the Bureau of Land Management as to the accuracy, reliability, or completeness of these data for individual use or aggregate use with other data.

Generated by the Havre Field Office - October 2016
The map projections is NAD 83 UTM Zone 12N.



Vimy Ridge and Wood Bottom Area