

S1 Mobile Application for Android 5.1

Quick Reference Guide

Map View

GPS Position Bar:





- GPS position is displayed in Decimal Degrees, WGS84
 - Tap bar to access additional coordinate systems
- Number of satellites used in position fix
- Estimated GPS accuracy is displayed in meters or feet (68% or 95% confidence)
- Estimated elevation is displayed in meters or feet
- Coordinate Source of GPS

Map View:

- Map View is capable of displaying different layers at same time:
 - Base Map
 - User Reference Map
 - Edit Geodatabase
 - Tracklogs
 - GeoTag Photos
 - S1 Waypoints
- Shows current GPS Position
- Adjust map orientation

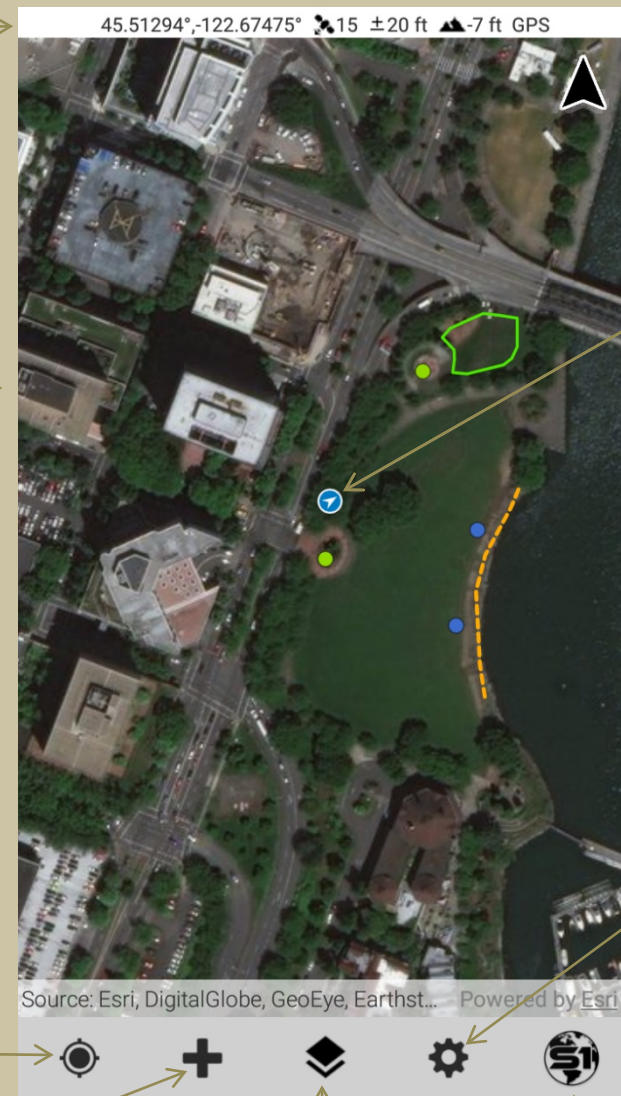
Activate GPS Button:

- Tap GPS button to activate GPS
- Location will show on screen once button is tapped
- GPS Position bar appears near top of map when GPS is activated





-  GPS and Auto Pan: OFF
-  GPS and Auto Pan: ON
-  GPS button: ON and Auto Pan: OFF
-  Bluetooth GPS and Auto Pan: ON

Collect Features Menu:

- Collect new features menu
- Provides the ability to collect data in different layers
 - Tracklogs
 - GeoTag Photos
 - S1 Waypoints
 - Layers from a downloaded offline edit geodatabase
- Editable layers can be switched out using the Manage Map Layers menu



GPS Position:

- GPS Position icon changes as satellite fix is acquired
- Map is centered on current GPS location (if Auto Pan GPS is on)
-  GPS position on map without satellite fix
-  GPS position on map with satellite fix
-  Arrow within GPS position indicates direction of travel
-  GPS accuracy is represented by a blue ring around current location

Tools/Options Menu:

- Tap button to open Tools/Options
- Options Menu
 - Number of Positions Averaged
 - Streaming Interval
 - Streaming Type: Time or Distance
 - Linear Units: Metric or Statute
 - Area Units: Metric or Statute
 - Navigation Alert Distance and Units
 - Accuracy Level Display: 68% or 95% Confidence
 - Coordinate Units
 - Sync Settings: Bidirectional or Upload Only
 - Theme: Classic, BLM Theme, FS Theme
 - Manage Auto-Populated Fields
 - Manage Laser Settings
- Sync Data
 - Use this tool to sync data when device has network connectivity (Wi-Fi or 4G)
 - Sync duration depends on type of network connection
- Download Data
 - Edit Geodatabase
 - ESRI Base Map
 - Agency Base Map
 - User Reference Map
- Connect to Bluetooth GPS
- Tools
 - Measure (Distance and Area)
 - Query
 - Enter Coordinates

Manage Map Layers Menu:

- Press to access downloaded Base Maps, User Reference Maps, Edit Geodatabases, Tracklogs, S1 GeoTag Photos, and S1 Waypoints
- Layer visibility and Labels can be toggled ON/OFF
- Map content can be switched out, removed from the map view, or deleted from the device

About S1 Mobile

Application:

- Tap this button to display information about the S1 Mobile Android Application
 - Quick Help, Help, S1 Videos, User Feedback, About, and Log Off

S1 Mobile Application for Android 5.1

Quick Reference Guide

Edit Mode



- GPS Position Bar:**
- GPS position is displayed in Decimal Degrees, WGS84
 - Tap bar to access additional coordinate systems
 - Number of satellites used in position fix
 - Estimated GPS accuracy is displayed in meters or feet (68% or 95% confidence)
 - Estimated elevation displayed in meters or feet
 - Coordinate Source of GPS

- Edit Mode Toolbar:**
- Submit Edit button allows feature to be saved
 - Attribute View Toggle button allows user to switch between attribute form and map view
 - Cancel button terminates the feature being collected (a warning asks if you are sure)

- Map View:**
- Map View is capable of displaying different layers at same time:
 - Base Map
 - User Reference Map
 - Edit Geodatabase
 - Tracklogs
 - GeoTag Photos
 - S1 Waypoints
 - Shows current GPS Position
 - Adjust map orientation

- GPS Position:**
- GPS Position icon changes as satellite fix is acquired
 - Map is centered on current GPS location (if Auto Pan GPS is on)
 - GPS position on map without satellite fix
 - GPS position on map with satellite fix
 - Arrow within GPS position indicates direction of travel
 - GPS accuracy is represented by a blue ring around current location

- Activate GPS Button:**
- Tap GPS button to activate GPS
 - Location will show on screen once button is tapped
 - GPS Position bar appears near top of map when GPS is activated
- GPS and Auto Pan: OFF
- GPS and Auto Pan: ON
- GPS button: ON and Auto Pan: OFF
- Bluetooth GPS and Auto Pan: ON

- Current GPS Feature:**
- Displays a sketch of feature (line in this example) with line segments in orange
 - Appears as symbolized color once feature is attributed and saved

- Position Capture Status Bar**
- Status bar reports the number of positions (vertices) being collected for a feature

- Begin Streaming Button:**
- Access this button when ready to stream or pause a line or polygon
 - Currently in Streaming Mode and Pause button is promoted
 - Begin Streaming button is promoted if Pause Streaming button is tapped (now user is in pause mode)
 - Average GPS button is available in Pause mode

- Attachment Menu:**
- Ability to attach photos to a point, line, or polygon
 - Multiple photos can be taken per feature
 - Ability to attach videos to a point, line, or polygon
 - Photos or videos can be attached using the camera or by browsing to existing files

- Edit Options Menu:**
- Nest Feature
 - Ability to capture another feature while collecting a line or polygon
 - Offset
 - This tool can only be used when collecting a point feature
 - S1 Options
 - Ability to access this menu while collecting a feature

S1 Mobile Application for Android 5.1

Quick Reference Guide

Select Mode

GPS Position Bar:

- GPS position is displayed in Decimal Degrees, WGS84
 - Tap bar to access additional coordinate systems
- Number of satellites used in position fix
- Estimated GPS accuracy is displayed in meters or feet (68% or 95% confidence)
- Coordinate Source of GPS

Feature Bar:

- Text on Feature Bar indicates the name of the selected feature
- Tap arrow on Feature Bar if multiple features are selected to cycle thru features
- Tap on Feature Bar or webmap callout to show Feature Info display. The initial popup view honors webmap settings and will display custom webmap info. Tapping the button in the upper right will show all feature level metadata.

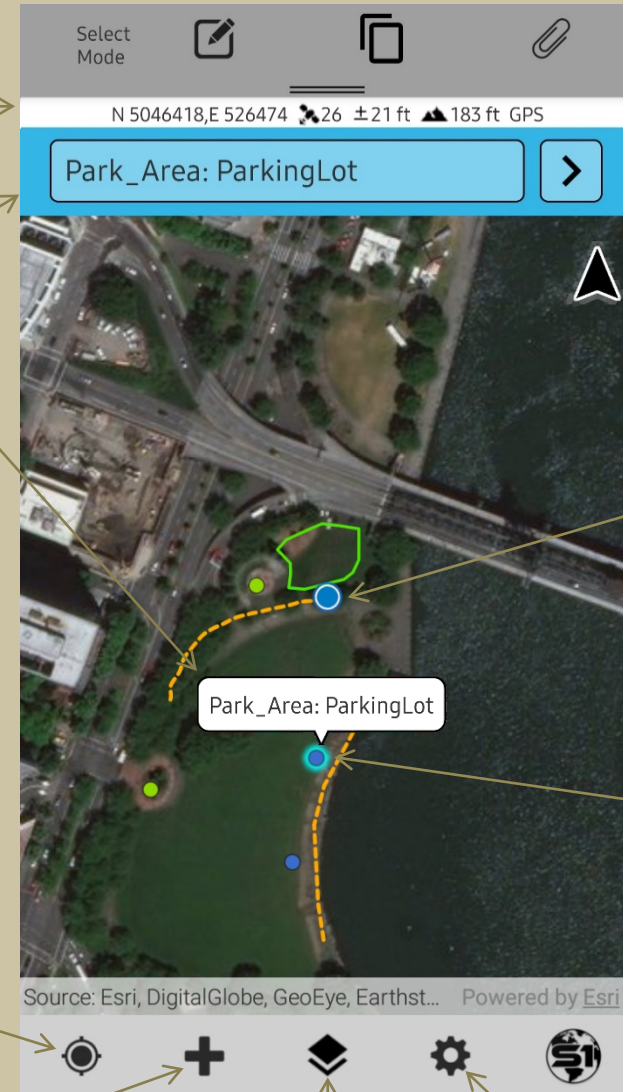
Activate GPS Button:

- Tap GPS button to activate GPS
- Location will show on screen once button is tapped
- GPS Position bar appears near top of map when GPS is activated

- GPS and Auto Pan: OFF
- GPS and Auto Pan: ON
- GPS button: ON and Auto Pan: OFF
- Bluetooth GPS and Auto Pan: ON

Collect Features Menu:

- Access this button when ready to collect new features
- Provides the ability to collect data in different layers
 - Tracklogs
 - GeoTag Photos
 - S1 Waypoints
 - Layers from a downloaded offline edit geodatabase
- Editable layers can be switched out using the Manage Map Layers menu



Select Mode Toolbar:

- Edit Feature button allows feature attributes/geometry to be edited
- Copy selected feature to create a new feature
- Manage attachments button accesses attachment options for selected feature
- Swipe down to view additional tools for delete and navigation.

GPS Position:

- GPS Position icon changes as satellite fix is acquired
- Map is centered on current GPS location (if Auto Pan GPS is on)
- GPS position on map without satellite fix
- GPS position on map with satellite fix
- Arrow within GPS position indicates direction of travel
- GPS accuracy is represented by a blue ring around current location

Selected Feature:

- Selected feature is symbolized with a blue/green box around border of feature
- Tap screen at another location to unselect the feature.

Map View:

- Map View is capable of displaying different layers at same time:
 - Base Map
 - User Reference Map
 - Edit Geodatabase
 - Tracklogs
 - GeoTag Photos
 - S1 Waypoints
- Shows current GPS Position
- Adjust map orientation

Manage Map Layers Menu:

- This button provides access to downloaded Base Maps, User Reference Maps, Edit Geodatabases, Tracklogs, GeoTag Photos, and S1 Waypoints
- Layer visibility and Labels can be toggled ON/OFF
- Map content can be switched out, removed from the map view, or deleted from the device

Tools/Options Menu:

- Tap this button to open a menu for Options, Sync Data, Download Data, Connect to Bluetooth GPS, and Tools

S1 Mobile Application for Android 5.1

Quick Reference Guide

GPS Position in Map View

GPS Position: *without satellite fix*



GPS Position: *with satellite fix*



Arrow indicates direction of travel



Blue ring represents GPS accuracy



Application Toolbar

GPS and Auto Pan: *OFF*



GPS and Auto Pan: *ON*



GPS button: *ON* and Auto Pan: *OFF*



Activate Bluetooth GPS Button



Collect Features Menu



Manage Map Layers Menu



Tools/Options Menu



About S1 Mobile Application



Edit Tools

Begin Streaming Button



Pause Streaming Button



Average GPS Button



Attachment Button



Undo Vertex Button



Options Menu



Edit Feature Button



Submit Edit Button



Attribute View Toggle Button



Copy Feature Button



Navigation Button



Navigation Direction



Cancel Edit Button



Delete Feature Button



Additional Tools

Download Button



Centers Map Extent on GPS Position



Manage Offset Button (*Offset Tool*)



Apply Offset Button (*Offset Tool*)



Share Location (*GeoTag Photo*)



Configure File Name (*GeoTag Photo*)



Capture GeoTag Photo (*GeoTag Photo*)



Record Video



Toggle map orientation settings



Map Orientation locked



Manage Waypoints, Tracklogs & Geotagged Photos

