



U.S. Department of the Interior
Bureau of Land Management

BLM Alaska RAC Meeting: August 15, 2018 NPR-A Overview

Shelly Jones, Acting Manager, Arctic District Office

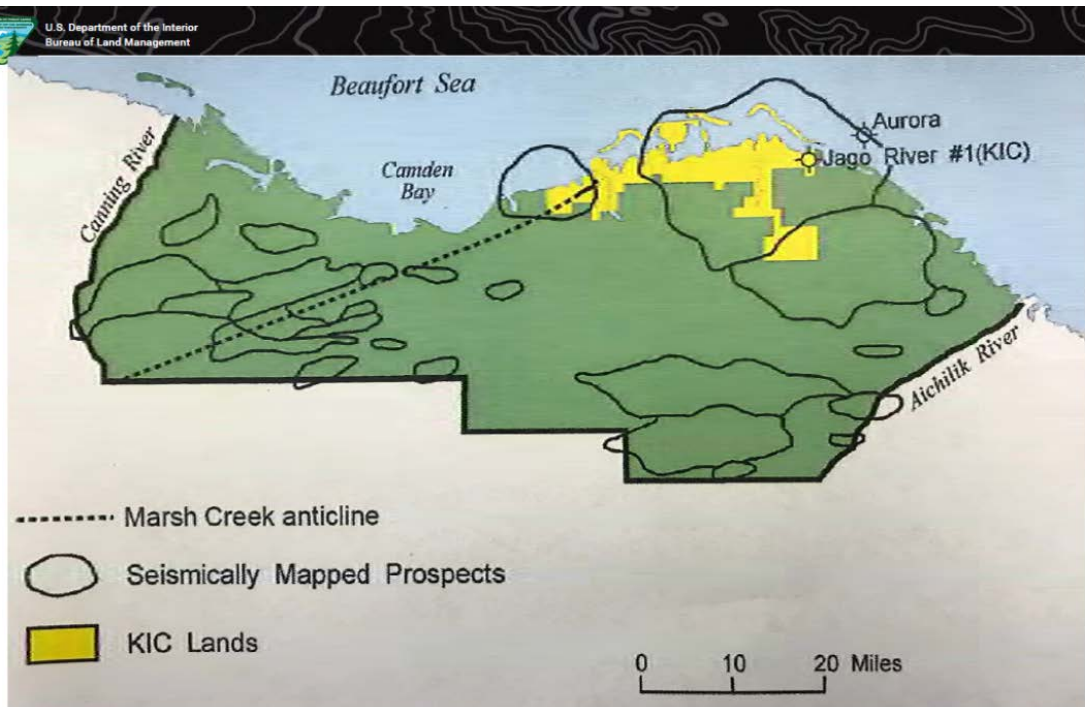




Coastal Plain EA



- BLM received an application from SA Exploration, ASRC and Kaktovik Inupiat Corporation to conduct 3D seismic in the Coastal Plain
- Requested timeline for authorization: January 2019 through Fall 2020
- Proposed project is currently under NEPA review
- Concurrent ESA consultation with USFWS and NMFS
- Environmental Assessment is expected to be available in September and potentially signing a FONSI/DR (if warranted) in mid November





GMT1

- Construction completed
- Pipeline testing completed
- Preparing to install powerline
- Drilling occurring
- On schedule for first production in 4th QTR 2018

Date & Time: Fri Aug 11 12:41:47 AKDT 2017
Position: +070°15.19' / -151°29.53'
Altitude: 422ft
Datum: WGS-84
Azimuth/Bearing: 008°N08E 0142mils (Magnetic)
Elevation Angle: -08.9°
Horizon Angle: -05.3°
Zoom: 1X





Other Washington Office Priorities

- Greater Mooses Tooth Two SEIS
- Coastal Plain Leasing Program EIS
- Willow Master Development Plan EIS
- NPR-A Integrated Activity Plan



Winter 2017-2018 Permitting and Activities

- GMT-2 Draft Supplemental Environmental Impact Statement
- Leasing Plan for the Coastal Plain (1002 Area) of the Arctic National Wildlife Refuge
- Revision of the 2013 NPR-A Integrated Activity Plan/Environmental Impact Statement
- NPR-A Lease Sale of all Available Tracts
- Willow Prospect Master Development Plan
- ConocoPhillips Geotechnical Exploration at GMT-2
- ConocoPhillips Bear CD Seismic Survey
- ConocoPhillips Winter Exploration in the NPR-A
- Olgoonik Construction Services Wolf Creek Legacy Wells Remediation
- UIC Gravel Mining Plan
- North Slope Borough Community Winter Access Trails Right-of-Way
- ASTAC Fiber Optic Line between Utqiagvik and Atqasuk
- IRIS Right-of-Way Renewal for Earthquake Monitoring System
- Right-of-Way for Fuel Transportation between Utqiagvik and Atqasuk

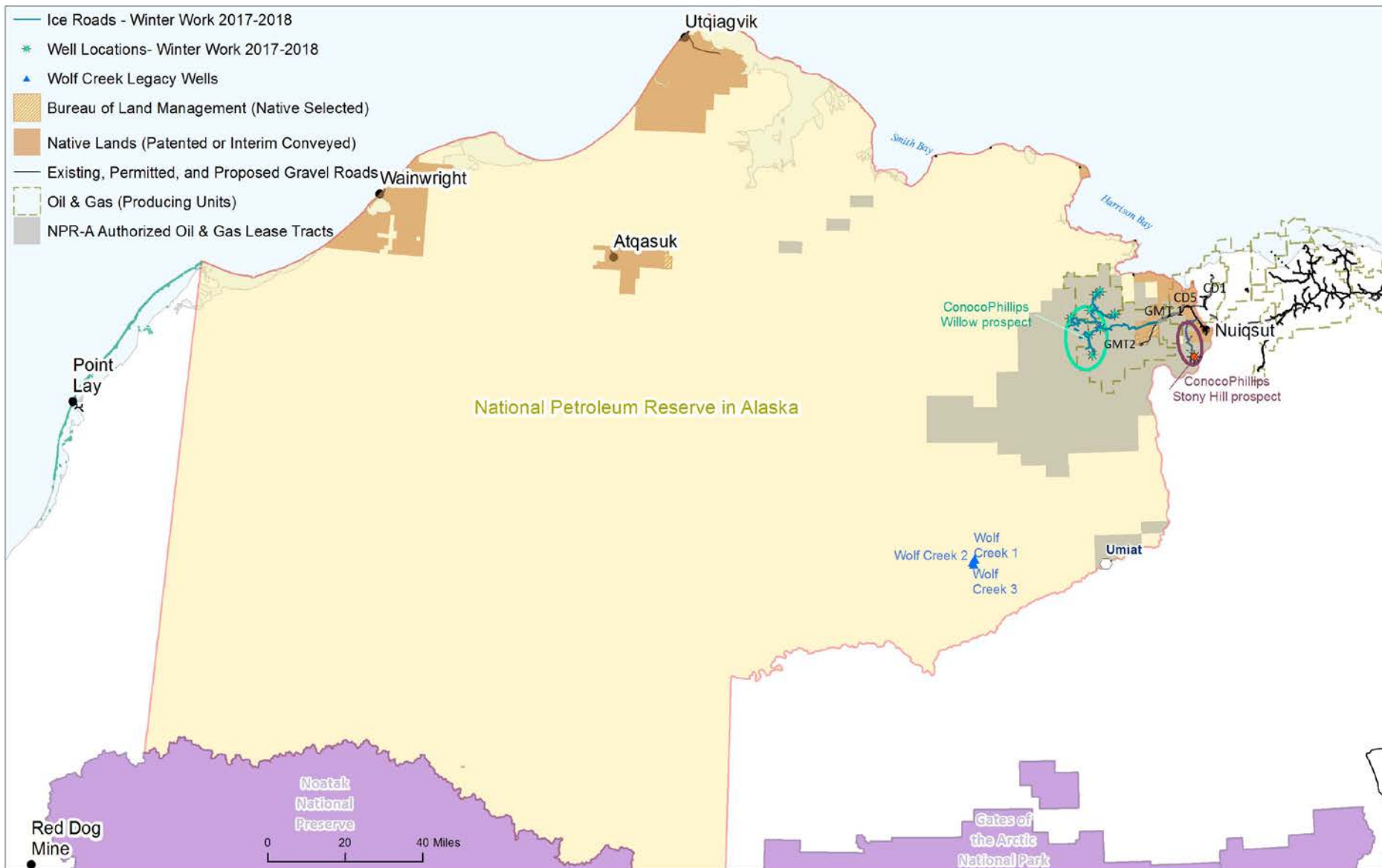


Winter Activity Completed in NPR-A

Winter Work 2017- 2018



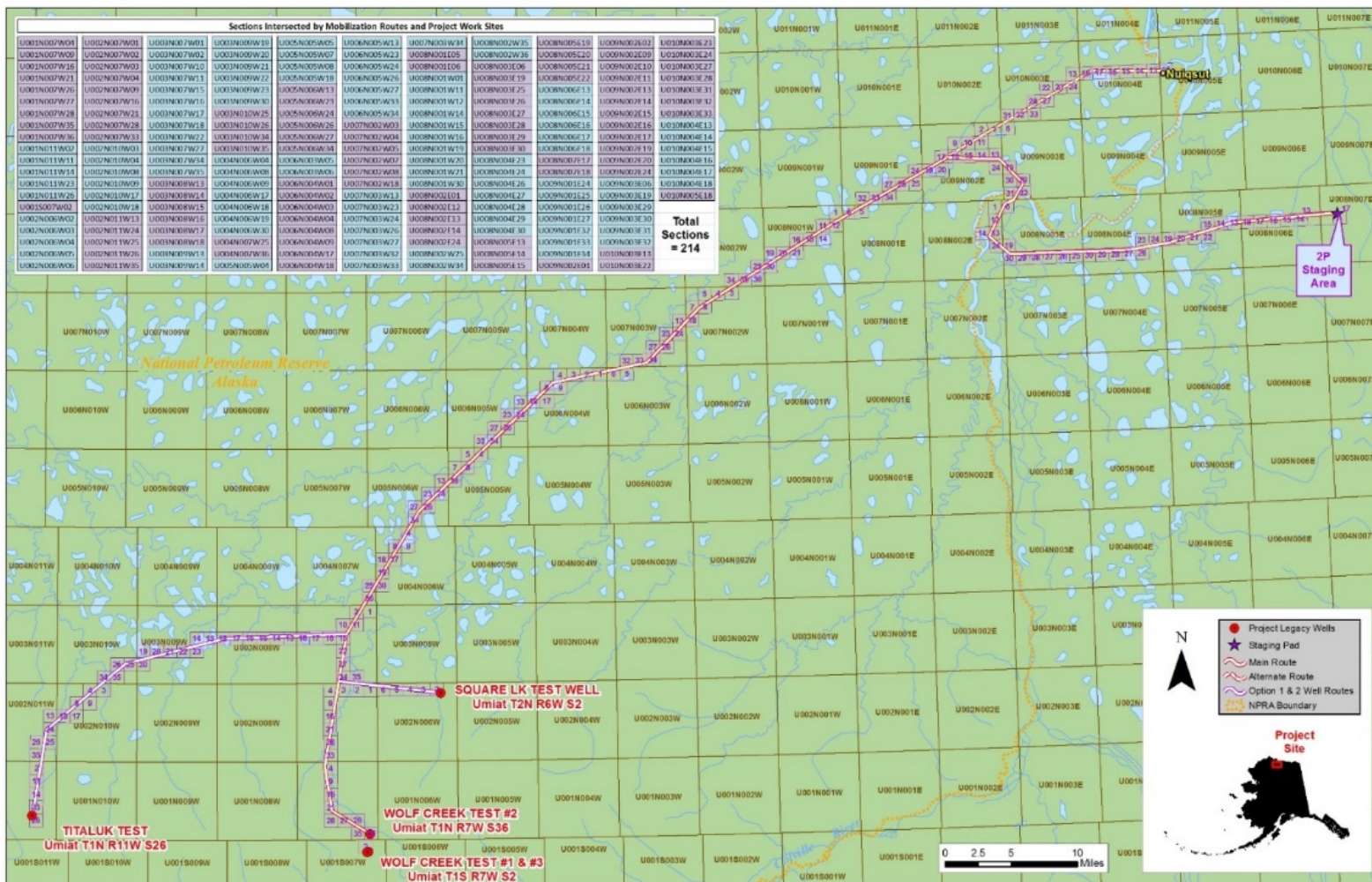
U.S. DEPARTMENT OF THE INTERIOR | BUREAU OF LAND MANAGEMENT | ALASKA | ARCTIC DISTRICT OFFICE





Legacy Wells

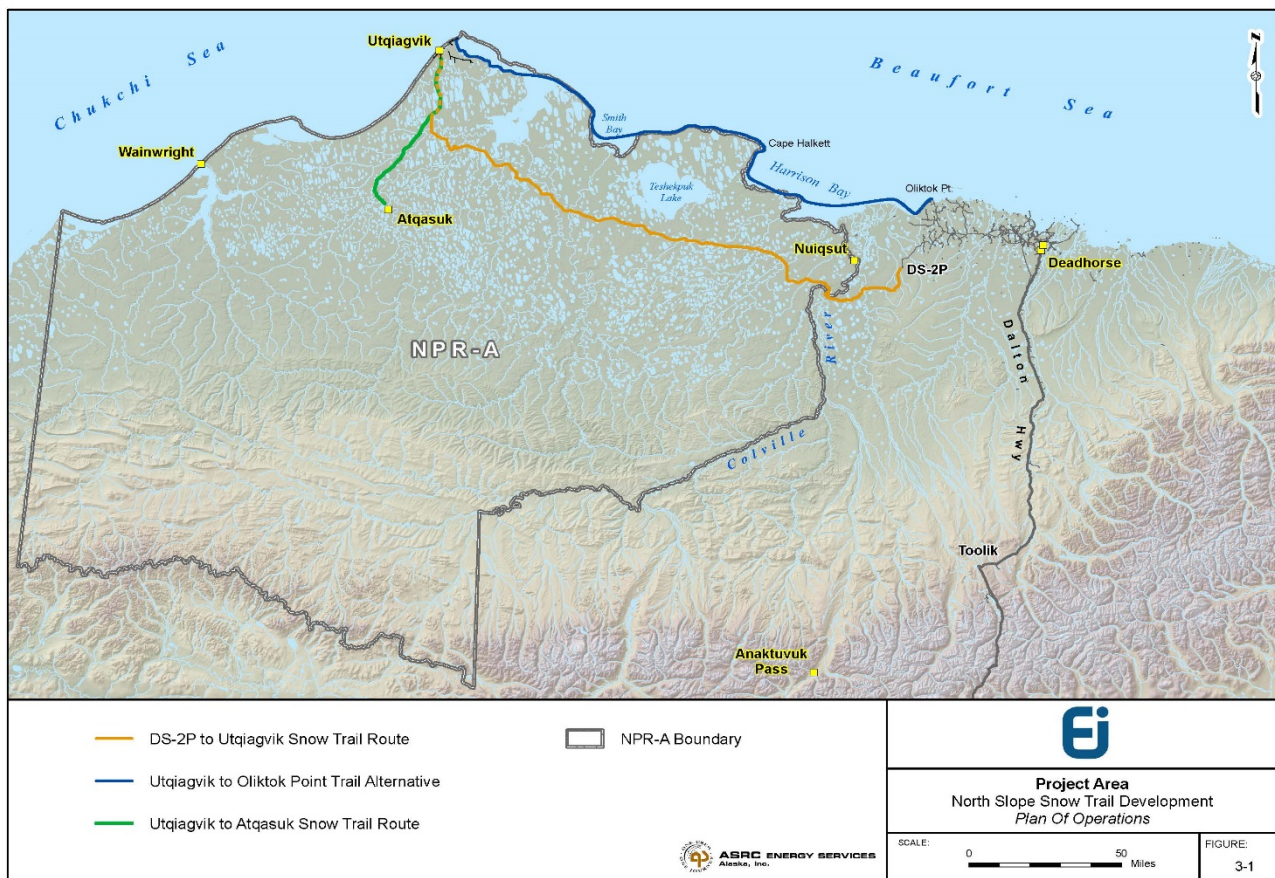
Olgoonik Construction Services (OCS) was contracted by BLM to plug and abandon (P&A) five National Petroleum Reserve Alaska (NPRA) Legacy Wells near Umiat Alaska: Wolf Creek #1, Wolf Creek #2, Wolf Creek #3, Titaluk #1 and Square Lake #1.





North Slope Borough Community Winter Access Trails Right-of-Way

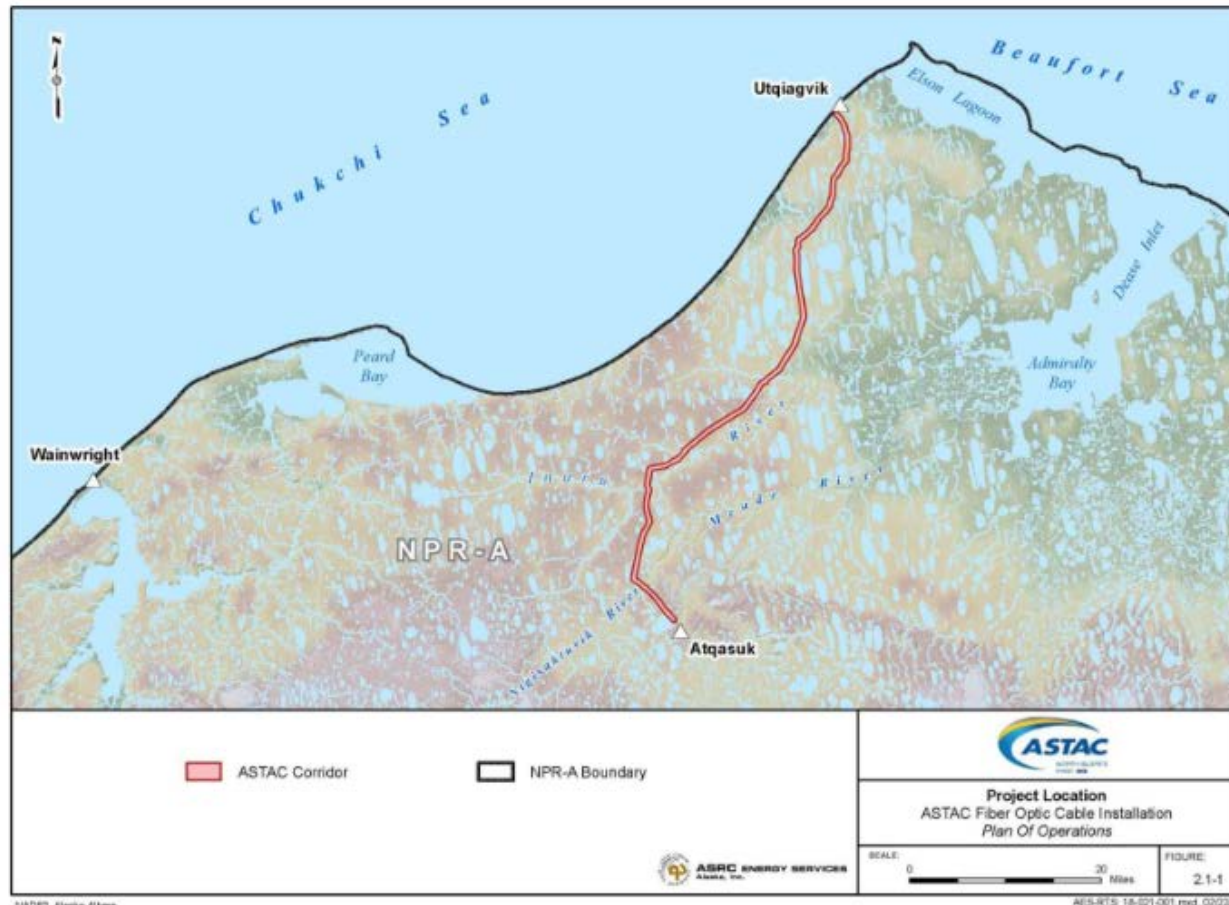
The NSB CWAT Project consisted of improved snow trails for use by local residents to provide overland access from Prudhoe Bay to Utqiagvik (Barrow), and between Utqiagvik and Atqasuk. It is considered a demonstration project to assess the costs and benefits of the NSB to provide winter overland access to the NSB communities located within the NPR-A.





ASTAC Fiber Optic Line

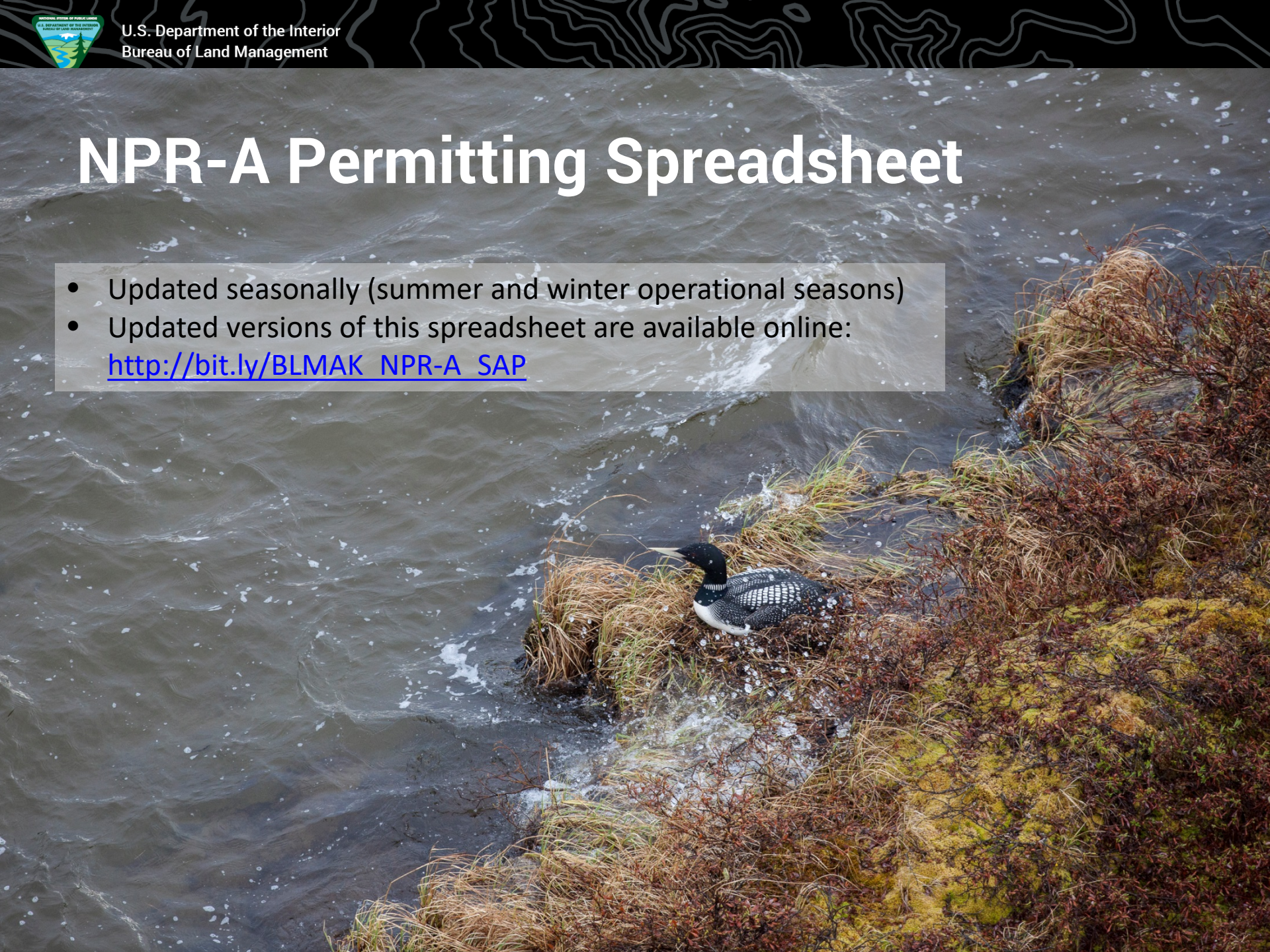
ASTAC has submitted a right-of-way application to the BLM for a broadband internet system within a fiber optic cable corridor from Utqiagvik to Atqasuk. The proposed route follows the Walakpa Gas Field Pipeline to its southern terminus, and then continues south toward Atqasuk paralleling a commonly used winter travel corridor.





NPR-A Permitting Spreadsheet

- Updated seasonally (summer and winter operational seasons)
- Updated versions of this spreadsheet are available online:
[http://bit.ly/BLMAK NPR-A SAP](http://bit.ly/BLMAK_NPR-A_SAP)



Questions?

