



U.S. Department of the Interior
Bureau of Land Management

News Release

Gila District, Arizona

Media Contact: June Lowery, (520) 258-7223

February 14, 2019

Prescribed fire planned for Aravaipa Canyon area

Project will improve grasslands on the south rim of Aravaipa Canyon

SAFFORD, Ariz. – The Bureau of Land Management’s (BLM) Safford Field Office and Gila District Fire Management Office will conduct a multiple day prescribed burn in the Aravaipa Canyon area between March and June, pending appropriate weather and seasonal conditions. The South Rim Burn will cover approximately 15,726 acres of BLM and private land in the Aravaipa Canyon Ecosystem Management Area located 50 miles west of Safford. Fire crews may be in the area as early as next week to black line and prepare the burn area boundaries ahead of the burn. The BLM will announce specific dates in advance of the operation.

Prescribed fires are intended to mimic natural fire frequency and intensity. They improve the health of the land by stimulating growth of desirable grasses, reducing invasive plants and managing fuel loads so that natural fires are less destructive. Large prescribed burns have been conducted in the Aravaipa Canyon Ecosystem Management Area since 1998. The burn is being coordinated with the Arizona Game and Fish Department and The Nature Conservancy Aravaipa Canyon Preserve.

The Aravaipa Canyon Ecosystem Management Area contains 69,000 acres of desert grasslands and permanently flowing waterways under the stewardship of the BLM and The Nature Conservancy. The organizations work together to conserve and enhance the ecosystems in the area while providing recreation opportunities such as hunting, hiking and horseback riding. The area is located in Pinal and Graham counties.

“The Aravaipa Canyon has some impressive natural values, and these fire treatments are part of a long-term combined effort to conserve the area,” said Safford Field Office Manager Scott Cooke.

Aravaipa Canyon area roads listed below will be closed from 6 p.m. the day before each burn to 6 a.m. the day after each burn is completed.

Specific road closures:

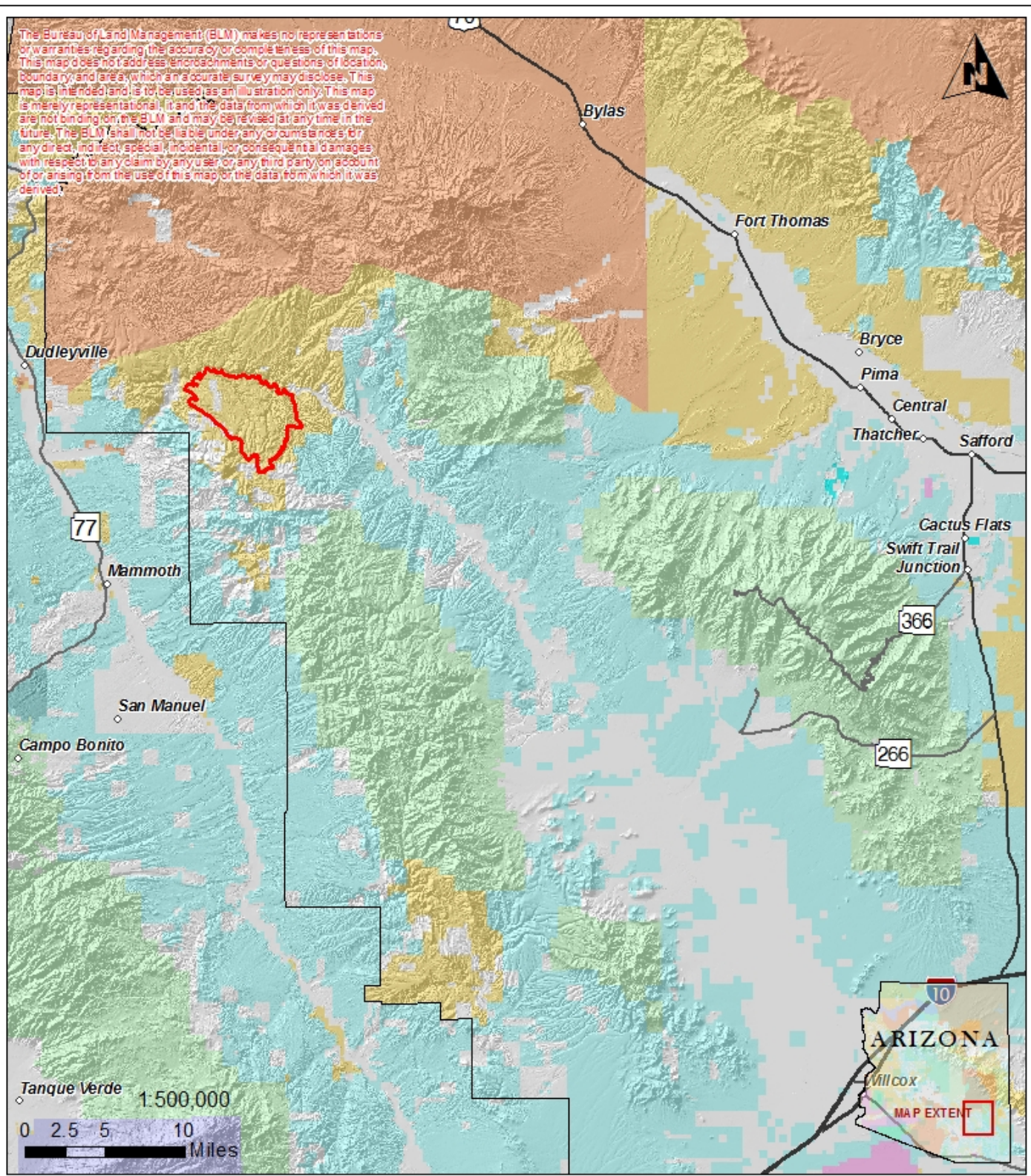
- Turkey Creek from the confluence of Aravaipa Canyon to the conjunction with the Rug Road.
- Rug Road from the conjunction with Turkey Creek to the conjunction with Dry Camp Canyon.

Fire crews will monitor the burned area during and after all prescribed burns. Prescribed burn information will be available the day of the burn at the Safford Field Office. For more information, contact Public Affairs Specialist June Lowery 520-258-7223.

-BLM-

The BLM manages more than 245 million acres of public land located primarily in 12 Western states, including Alaska. The BLM also administers 700 million acres of sub-surface mineral estate throughout the nation. The agency’s mission is to sustain the health, diversity, and productivity of America’s public lands for the use and enjoyment of present and future generations. Diverse activities authorized on these lands generated \$96 billion in sales of goods and services throughout the American economy in fiscal year 2017. These activities supported more than 468,000 jobs.

The Bureau of Land Management (BLM) makes no representations or warranties regarding the accuracy or completeness of this map. This map does not address encroachments or questions of location, boundary, and area which an accurate survey may disclose. This map is intended to be used as an illustration only. This map is merely representational, and the data from which it was derived are not binding on the BLM and may be revised at any time in the future. The BLM shall not be liable under any or circumstances for any direct and indirect, special, incidental or consequential damages with respect to any claim by any user or any third party on account of or arising from the use of this map or the data from which it was derived.



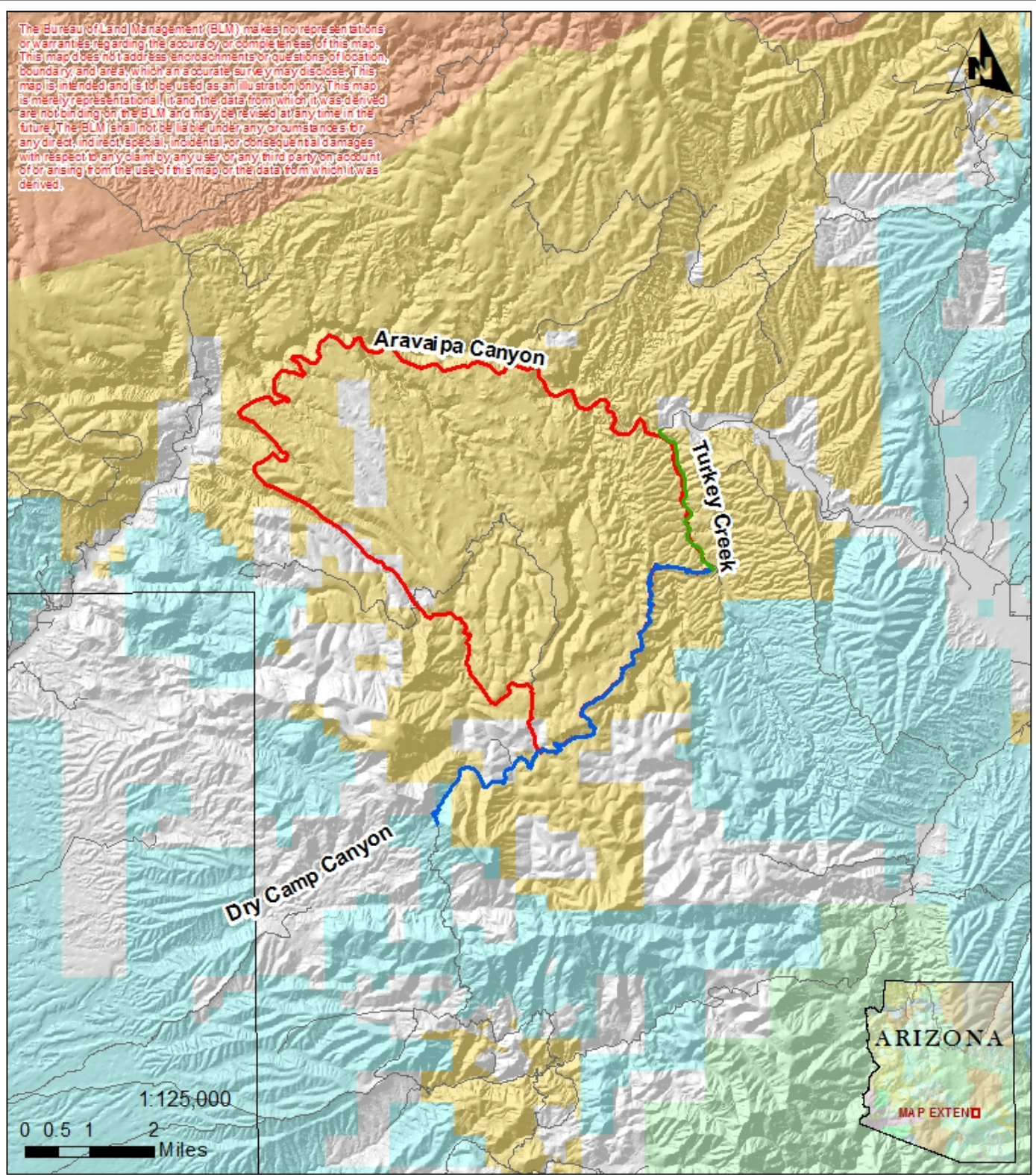
South Rim Prescribed Burn



- South Rim Burn
- BLM
- Local or State Parks
- State
- County
- Military
- State Wildlife Area
- Indian Lands
- NPS
- USFS
- Private



The Bureau of Land Management (BLM) makes no representations or warranties regarding the accuracy or completeness of this map. This map does not address encroachments or questions of location, boundary, and area, which an accurate survey may disclose. This map is intended and is to be used as an illustration only. This map is merely representational, and the data from which it was derived are not binding on the BLM and may be revised at any time in the future. The BLM shall not be liable under any circumstances for any direct and indirect, special, incidental, or consequential damages with respect to any claim by any user or any third party on account of or arising from the use of this map or the data from which it was derived.



South Rim Prescribed Burn



- Turkey Creek Road Closure
- Rug Road Closure
- South Rim Burn
- BLM
- Indian Lands
- Private
- State
- USFS

