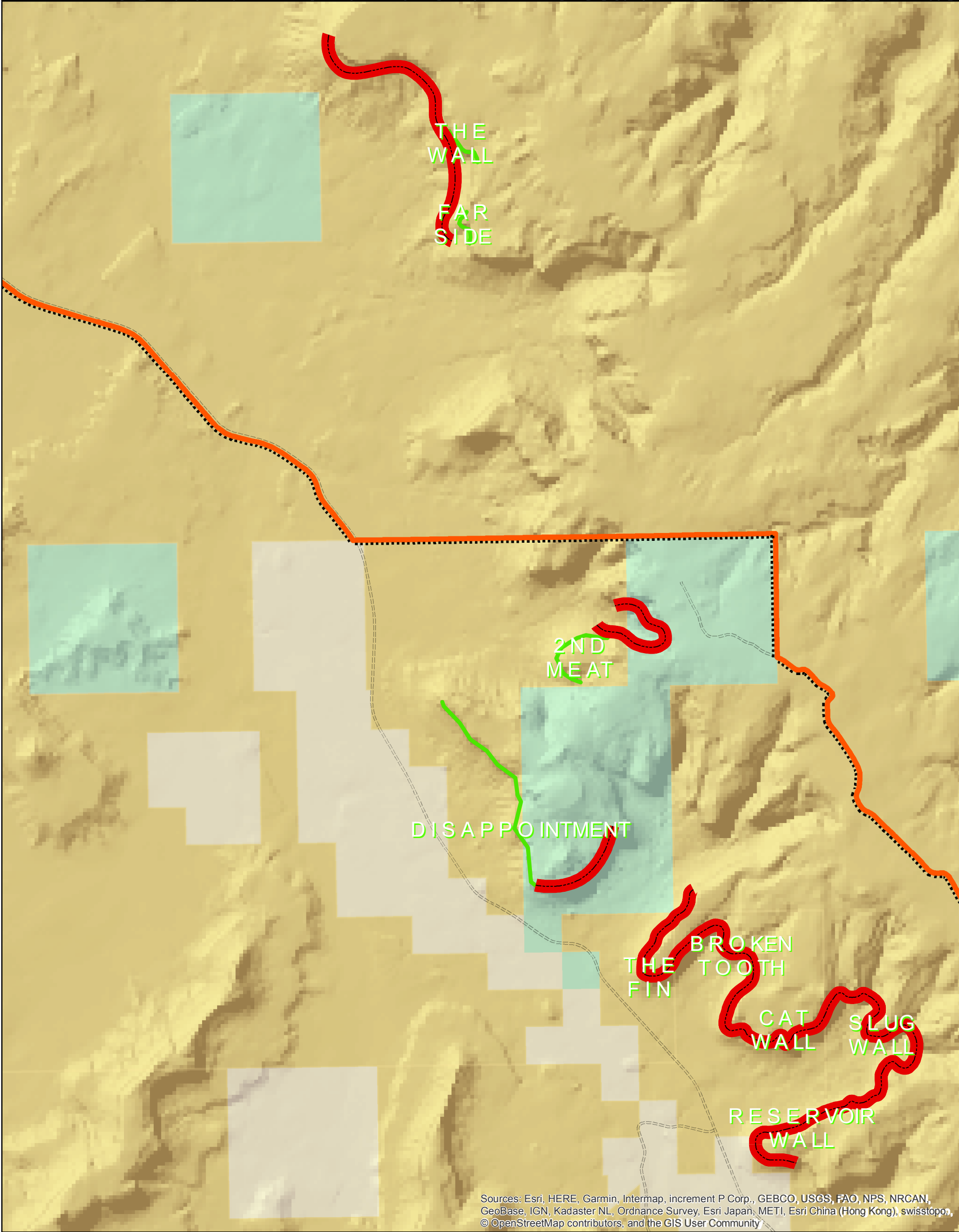
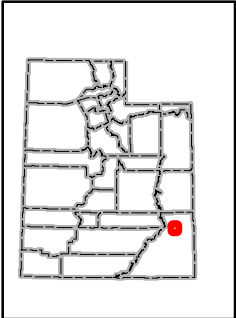




Indian Creek Climbing Avoidance Areas, Starting March 1, 2019



Sources: Esri, HERE, Garmin, Intermap, increment P Corp., GEBCO, USGS, FAO, NPS, NRCAN, GeoBase, IGN, Kadaster NL, Ordnance Survey, Esri Japan, METI, Esri China (Hong Kong), swisstopo, © OpenStreetMap contributors, and the GIS User Community



Legend

- Avoid Climbing In These Areas
- Bureau of Land Management (BLM)
- Private
- SITLA
- Bears Ears National Monument Boundary

0 0.25 0.5 1 Miles

No warranty is made by the Bureau of Land Management as to the accuracy, reliability, or completeness of these data for individual use or aggregate use with other data.