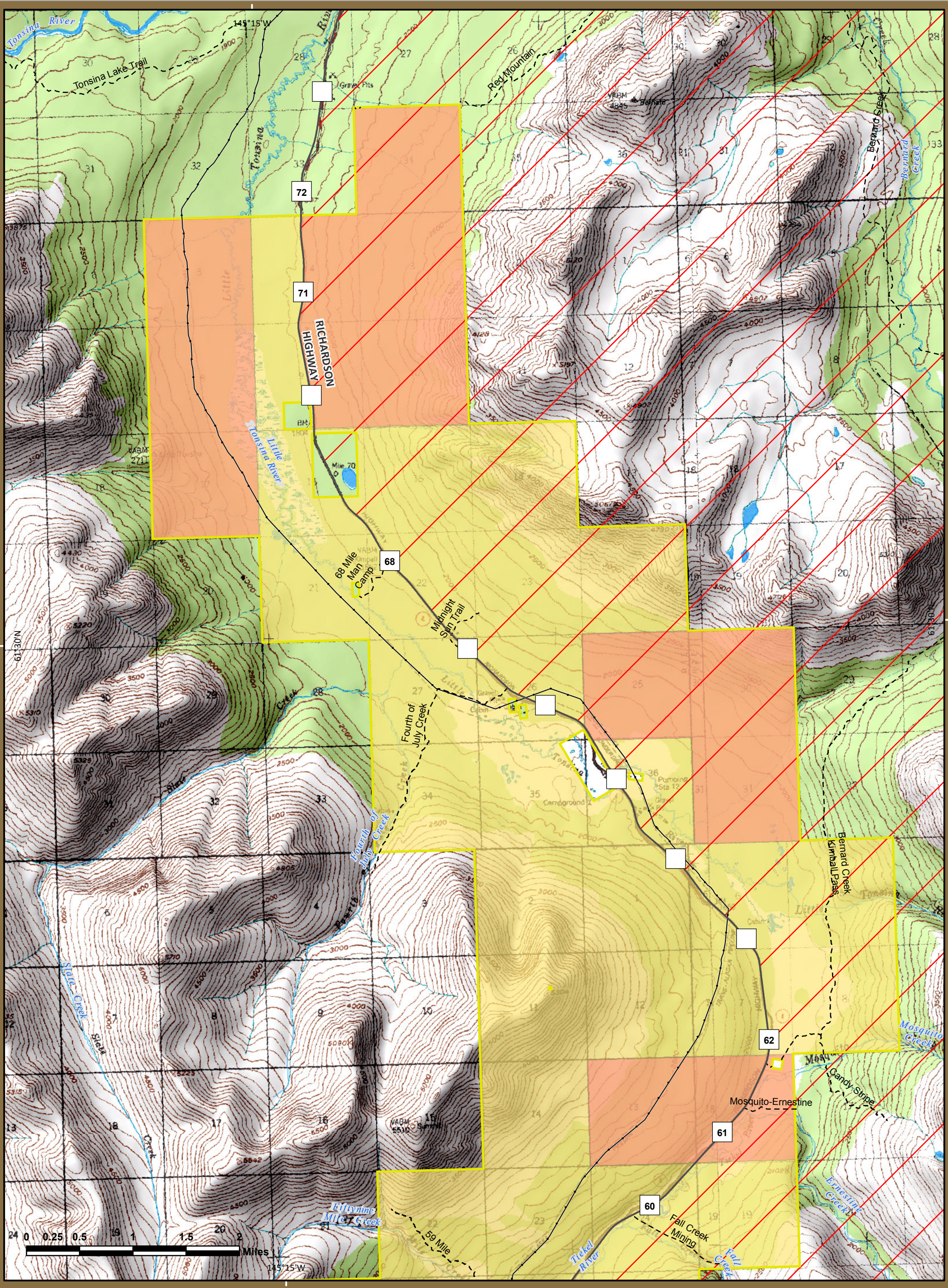




Tiekel Biomass Salvage Area

U.S. Department of the Interior | Bureau of Land Management | Glennallen Field Office



- Trails
- Trans-Alaska Pipeline
- Tiekel_Biomass_Salvage_Area
- Federal Lands

Tonsina Controlled Use Area: Closed to the use of any motorized vehicle or pack animal for hunting, including the transportation of hunters, their hunting gear, or parts of game, from July 26 through September 30

Disclaimer: No warranty is made by the Bureau of Land Management as to the accuracy, reliability, or completeness of these data for individual or aggregate use with other data. Original data were compiled from various sources. This information may not meet National Map Accuracy Standards. This product was developed through digital means and may be updated without notification. The information displayed on this map should be used for graphic display only. For official land status information, refer to Cadastral Survey plats, Master Title Plats, and land status case-files.

Bureau of Land Management
Glennallen Field Office
PO Box 147
Glennallen, AK 99588
Phone: 907-822-3217
<https://www.glennallen.ak.blm.gov>

