



United States Department of the Interior
BUREAU OF LAND MANAGEMENT

Kremmling Field Office
2103 East Park Avenue
P.O. Box 68
Kremmling, CO



10/15/2020

Emergency Area Closure

Closure Order Number CON02-P2NN4T-001

In order to protect persons, property and public lands and resources the following public land managed by the Bureau of Land Management are closed to all public use: All BLM managed lands North of US HWY 40 to the border of the Arapahoe National Forest, East of Grand County Road 2, West of US HWY 34.

In accordance with 43 CFR 8364.1 (a) To protect, persons property and public lands and resources, the authorized officer may issue an order to restrict use of designated public lands.

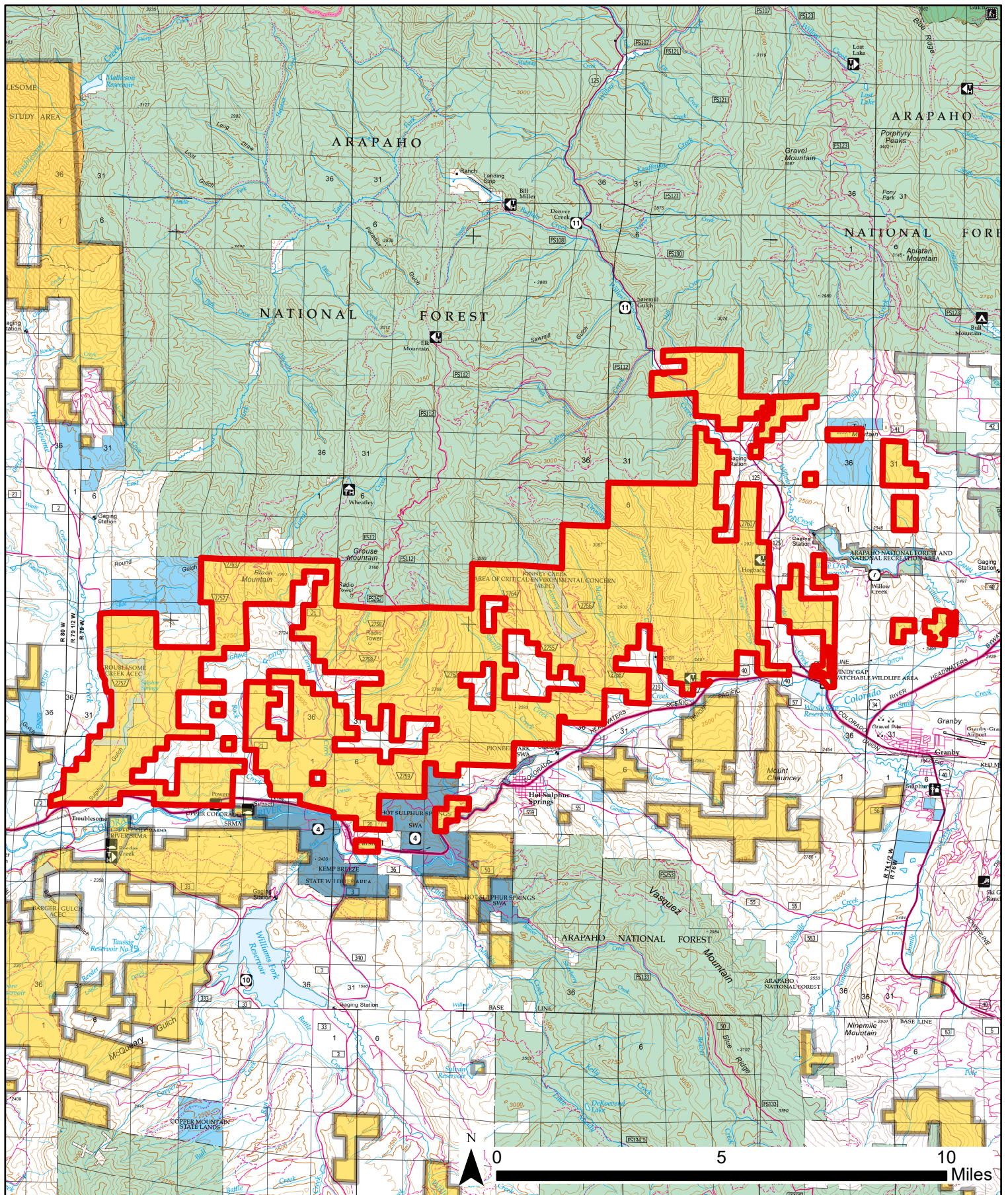
The emergency closure will remain in effect until the area is cleared of emergency activities providing for safe public access.

If you have any questions about this emergency closure, please contact the Bureau of Land Management Kremmling Field Office at (970) 724-3000.

Signature:

William J. Mills
Field Manager

Date: 10/15/2020



Emergency Closure Oct15 2020

CON02-P2NN4T-001