



United States Department of the Interior

BUREAU OF LAND MANAGEMENT

Kremmling Field Office

2103 East Park Avenue

P.O. Box 68

Kremmling, CO



11/05/2020

Emergency Area Closure

Closure Order Number CON02-P2NN4T-005

In order to protect persons, property and public lands and resources the following public land managed by the Bureau of Land Management are closed to all public use: All BLM managed lands North of US HWY 40 to the border of the Arapahoe National Forest, East of Grand County Road 21, West of US HWY 34. Additionally, all BLM managed lands within the perimeter of the East Troublesome Fire remained closed to public access.

In accordance with 43 CFR 8364.1 (a) To protect, persons property and public lands and resources, the authorized officer may issue an order to restrict use of designated public lands.

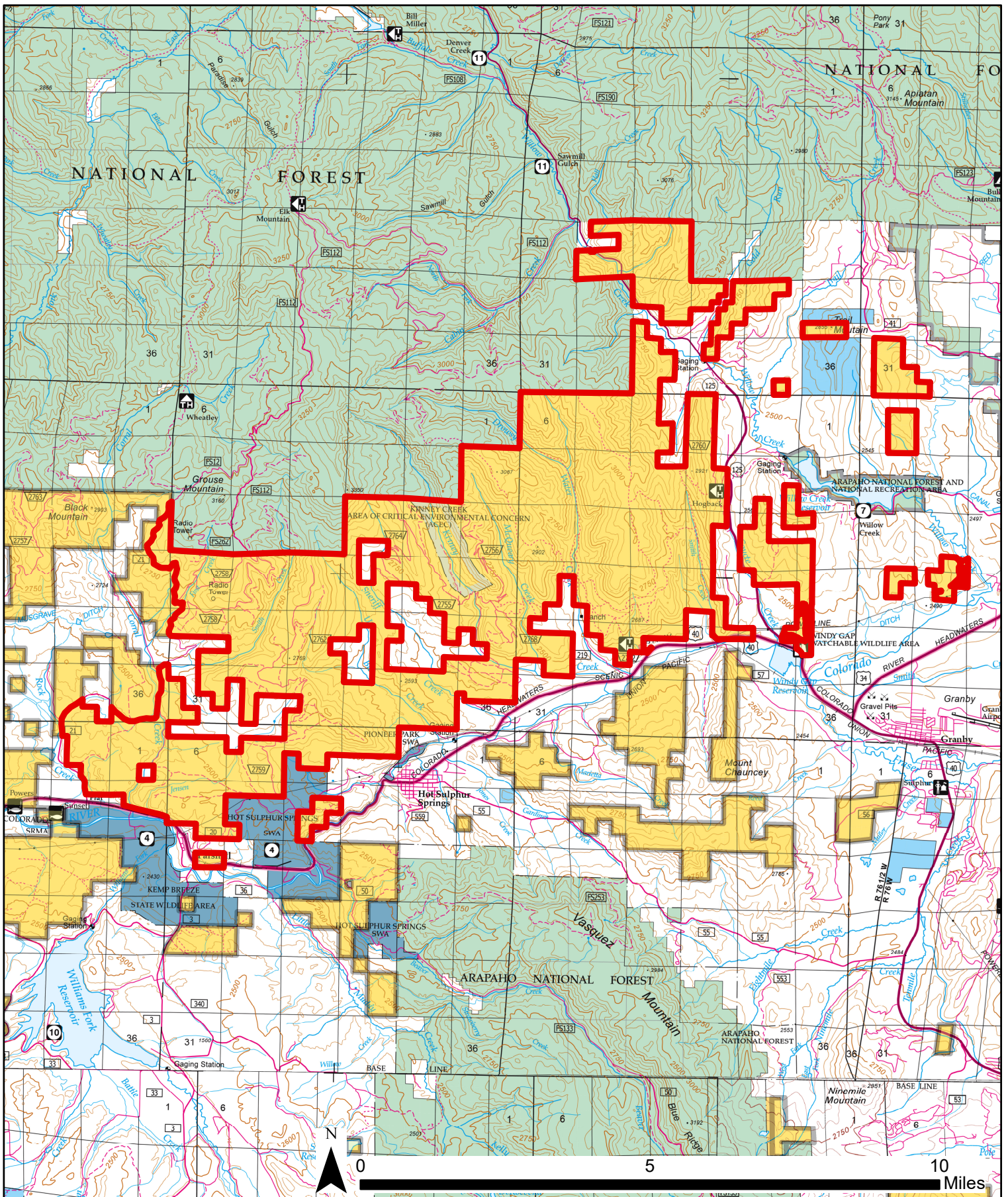
The emergency closure will remain in effect until the area is cleared of emergency activities providing for safe public access.

If you have any questions about this emergency closure, please contact the Bureau of Land Management Kremmling Field Office at (970) 724-3000.

Signature:

William J. Mills
Field Manager

Date: 11/05/2020



Emergency Closure Nov 5 2020

CON02-P2NN4T-005