

East Troublesome Fire  
 WY-MRF-000408  
 Public Information Map  
 10/23/2020

Closure Order Numbers:

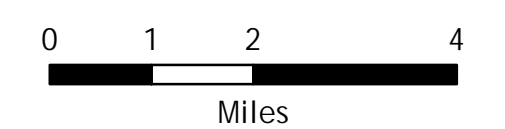
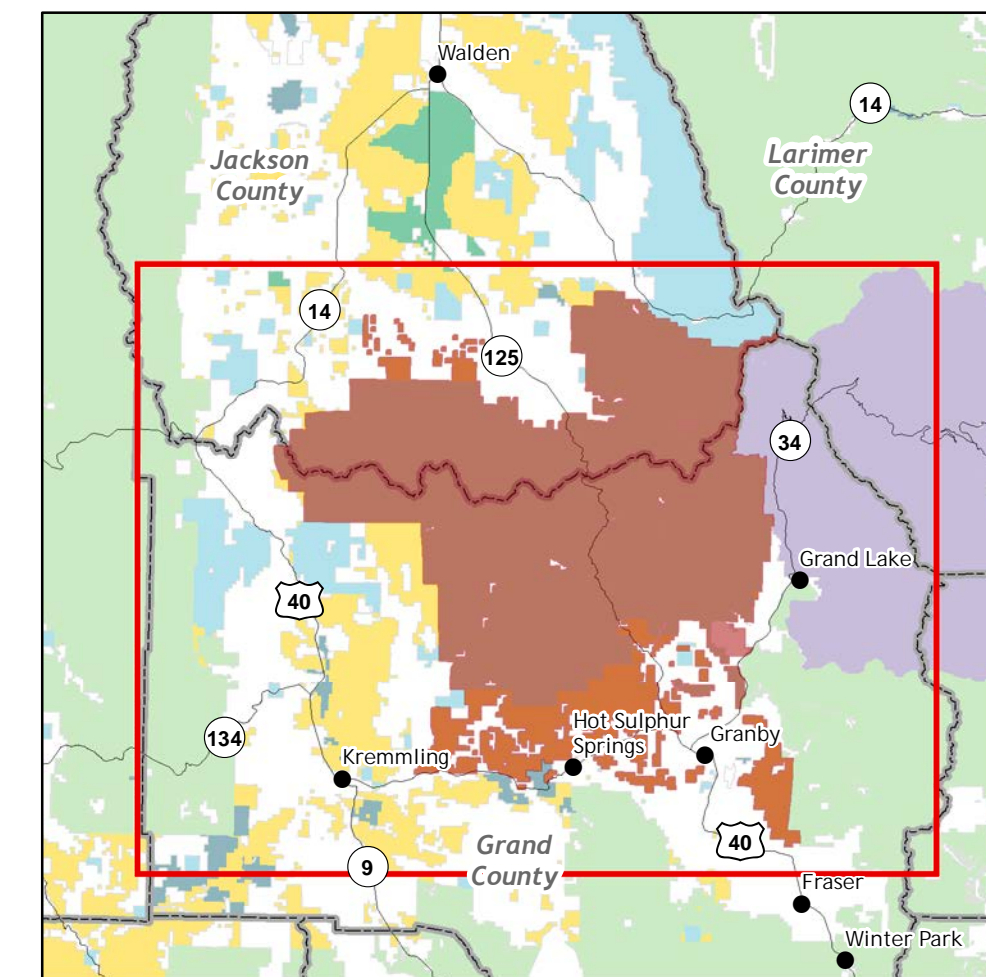
USFS MBRNF -PRD-2020-290  
 USFS MBRNF -PRD-2020-297  
 USFS ARP-SRD-2020-10

BLM CON02-P2NN4T-001  
 BLM CON02-P2NN4T-002

**Caution:  
 Firefighters in Area**

- Closure Area
- State and Local Highways
- Wilderness Area
- Surface Management Status
- Bureau of Land Management
- National Park Service
- Other Federal
- Private
- State
- State, County, City, Areas
- US Fish and Wildlife Service
- US Forest Service

Location Map



No warranty is made by the United States Government as to the accuracy, reliability, or completeness of these data for individual use or aggregation use with other data. All boundaries are an approximate representation.