

## ATTACHMENT 3

# Examples of Revegetation Percent Cover

---

### Background

The following photo sets are examples of what various values of vegetation percent cover look like at a placer mine site. These photos and the percent cover values were recorded during the 2015/2016 mining seasons at mine sites on federal mining claims. The inventory of photos will continue to grow as more sites with successful vegetative cover are recorded and documented.

### Goal

The goal of this photo set is twofold: 1) give mine operators and field staff a visual example set for comparison of a sites revegetation conditions with known percent covers 2) provide claimants, operators, and lessees an example of what a range of percent cover looks like at a placer mine site.





08.29.2016 15:40

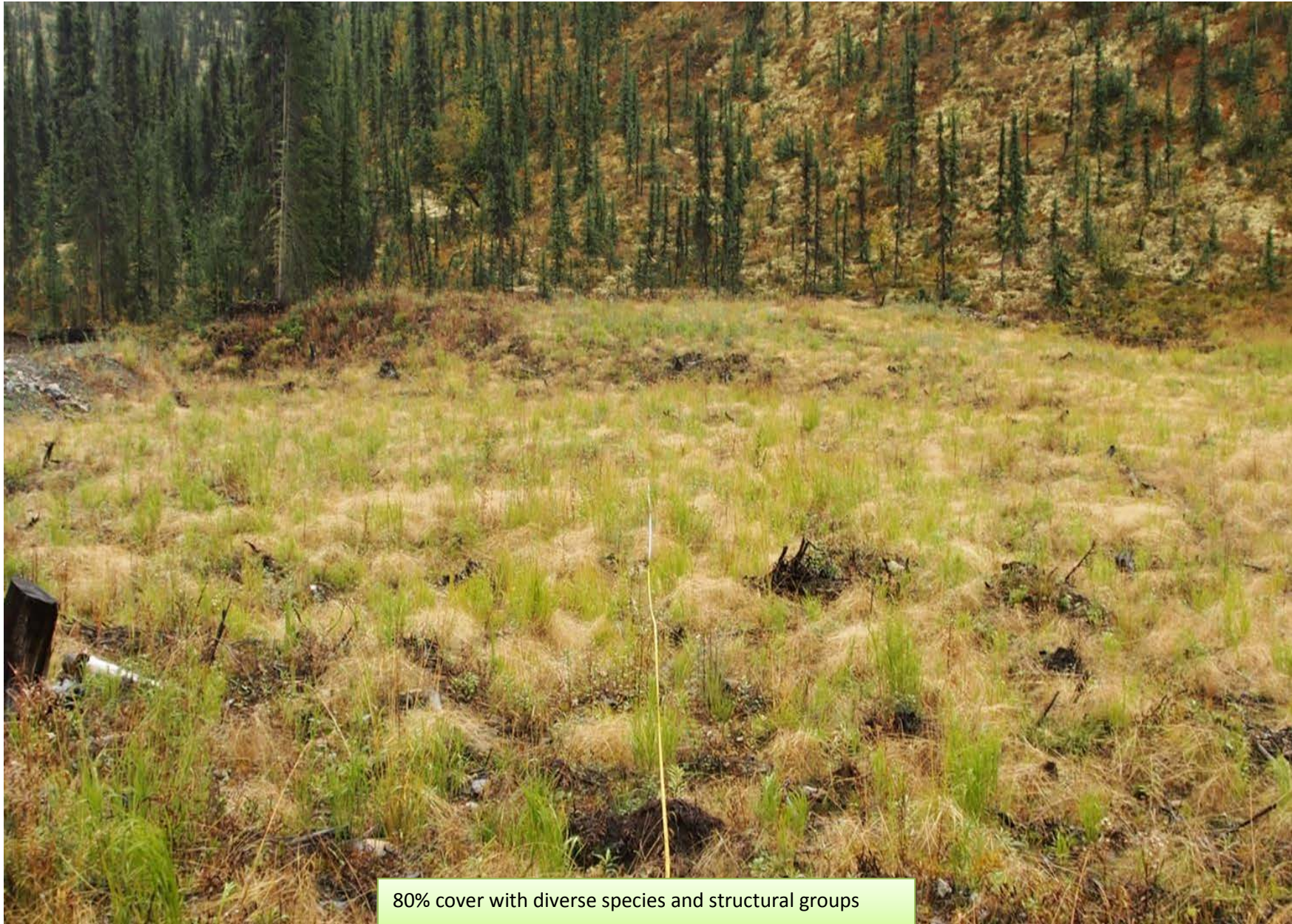
+75% cover with diverse species and structural groups



70% cover with diverse species and structural groups



86% cover with diverse species and structural groups



80% cover with diverse species and structural groups



2015/08/22 12:33

+70% cover with diverse species and structural groups



60% cover with diverse species and structural groups



~80% cover with diverse species and structural groups





~90% cover with one structural group and two species



25% cover with vegetation plugs in area where topsoil was lost due to previous mining

Example of correct earthwork reclamation – topsoil evenly spread throughout, trees and vegetation piles spread throughout for habitat and seed collection, trees installed to create vertical habitat (Alternative Wildlife Habitat Features).





Example of correct earthwork reclamation – topsoil evenly spread throughout, trees spread throughout for habitat and seed collection (Alternative Wildlife Habitat Features).



Example of correct earthwork reclamation – topsoil evenly spread throughout, topology matches surrounding landform.

Example of correct earthwork reclamation – topsoil evenly spread throughout, topology matches surrounding landform, vegetation spread over top.

