

**From:** Bowman, Randal  
**To:** [Ann Miller](#)  
**Subject:** Fwd: Agenda for tomorrow Monument Review Team meeting  
**Date:** Monday, June 05, 2017 5:19:45 PM  
**Attachments:** [Reclamation Facilities - CascadeSiskiyouNM - June 2017.pdf](#)

---

Here is a response from Reclamation on question 2(b) of your data call for the Cascade-Siskiyou monument

----- Forwarded message -----

**From:** **Maucieri, Mathew** <[mmaucieri@usbr.gov](mailto:mmaucieri@usbr.gov)>  
**Date:** Mon, Jun 5, 2017 at 5:40 PM  
**Subject:** Re: Agenda for tomorrow Monument Review Team meeting  
**To:** "Bowman, Randal" <[randal\\_bowman@ios.doi.gov](mailto:randal_bowman@ios.doi.gov)>  
**Cc:** Aaron Moody <[aaron.moody@sol.doi.gov](mailto:aaron.moody@sol.doi.gov)>, Ann Navaro <[ann.navaro@sol.doi.gov](mailto:ann.navaro@sol.doi.gov)>, Herbert Frost <[bert\\_frost@nps.gov](mailto:bert_frost@nps.gov)>, Benjamin Simon <[benjamin\\_simon@ios.doi.gov](mailto:benjamin_simon@ios.doi.gov)>, Betsy Hildebrandt <[betsy\\_hildebrandt@fws.gov](mailto:betsy_hildebrandt@fws.gov)>, Tanya Joshua <[tanya\\_joshua@ios.doi.gov](mailto:tanya_joshua@ios.doi.gov)>, "Appel, Elizabeth" <[elizabeth.appel@bia.gov](mailto:elizabeth.appel@bia.gov)>, "McAlear, Christopher" <[cmcalear@blm.gov](mailto:cmcalear@blm.gov)>, Jeff Rupert <[Jeff\\_Rupert@fws.gov](mailto:Jeff_Rupert@fws.gov)>

hello randy,

i apologize for the delayed response - we were supposed to respond friday 6/2 but i only just received the information below and attached from our pacific northwest region this afternoon. for the monuments overlying some bureau of reclamation lands, we only have one area where there is responsive information to your may 11 data call, and that is cascade-siskiyou national monument.

for that monument, our regional office relays that Reclamation is producing hydropower and we do have critical infrastructure within the Cascade Siskiyou monument boundary at Keene Reservoir.

the attached map shows the expanded boundary in relation to Reclamation's managed facilities. While Green Springs was not in the original monument boundary, supporting facilities were. With the expansion it would appear that the powerplant is now within the boundary of the monument.

while we do not have information on the expanded monument boundary (designated in january 2017) impacting energy development as envisioned in your may 11 data call document, we felt we should still pass along the map.

this is in response to question 2(b) from your "initial data request" document circulated on may 11.

please let me know if you have any questions, and apologies for the late submittal.

thx

- mat

On Wed, May 10, 2017 at 2:59 PM, Bowman, Randal <[randal\\_bowman@ios.doi.gov](mailto:randal_bowman@ios.doi.gov)> wrote:

## **Monument Review Team Initial Meeting Agenda**

May 11, 2017, 10 am, Room 6122

Mission Summary

Introductions

Initial data call (attached to transmittal email) discussion –

initial impressions on how much of this is likely to be available and how long to assemble

Tentative due dates – Bears Ears and Grand Staircase/Escalante Tuesday 5/16

All others Friday 6/2

Options to guide review

Help with public comments

Marine Monuments - with NOAA, possibly others

Other agencies – DOD and Forest Service, Energy, Homeland Security, others

Other – suggestions , comments, questions

Next meeting next week, to be determined by availability of Downey Magallanes of Sec. staff – any times members not available?

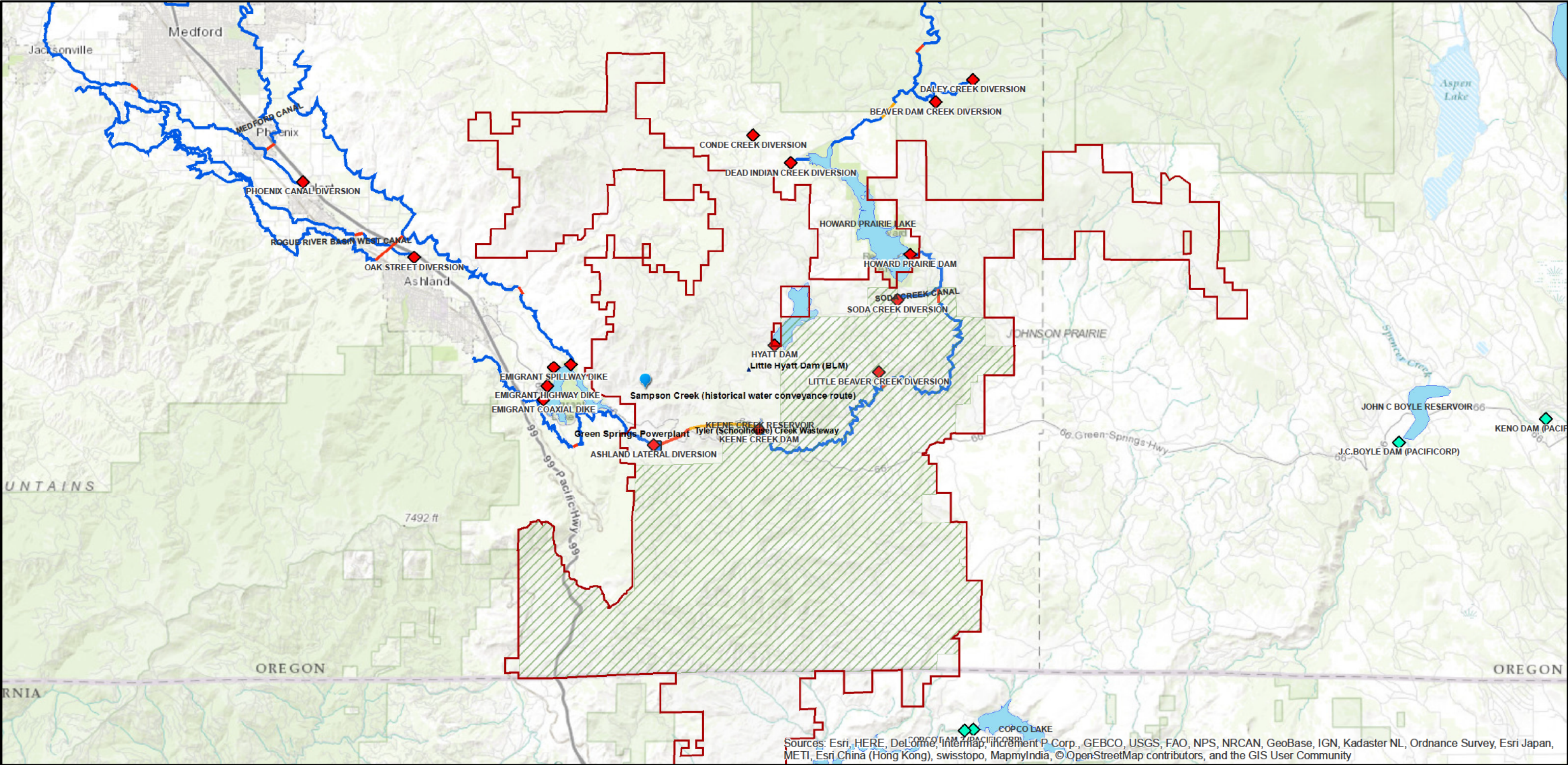
--

**Mathew Maucieri**  
Bureau of Reclamation  
U.S. Department of the Interior

202.513.0569 desk  
202.277.4934 cell



# Cascade Siskiyou National Monument - Reclamation Facilities



- National\_Monument

National\_Monument - Previous

Dams

Selected Non-Reclamation Dams

Reclamation Dams

Hydropower Plants

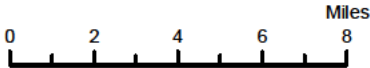
Reclamation Owned and Operated

Reservoirs
- Water Carriage

Reclamation Canal

Reclamation Pipeline

Reclamation Tunnel



This map is provided as-is and may contain representations of property boundaries. It is intended for general reference only. None of the parties involved in preparing this map or data contained herein warrant or represent information to be complete and accurate, and cannot be held responsible for errors or omissions.