

**From:** Mueller, Brian  
**To:** [Downey Magallanes](#); [Edwin Roberson](#); [joshua.hanson](#)  
**Subject:** Requested Maps  
**Date:** Thursday, October 26, 2017 5:15:58 PM  
**Attachments:** [ExisitingNationalMonuments.pdf](#)  
[BENM Proposed 10262017.pdf](#)  
[BENM Existing 10262017.pdf](#)  
[GSENM Proposed 10262017.pdf](#)  
[GSENM Existing 10262017.pdf](#)  
[GSENM Proposed wCoalLeases 10262017.pdf](#)

---

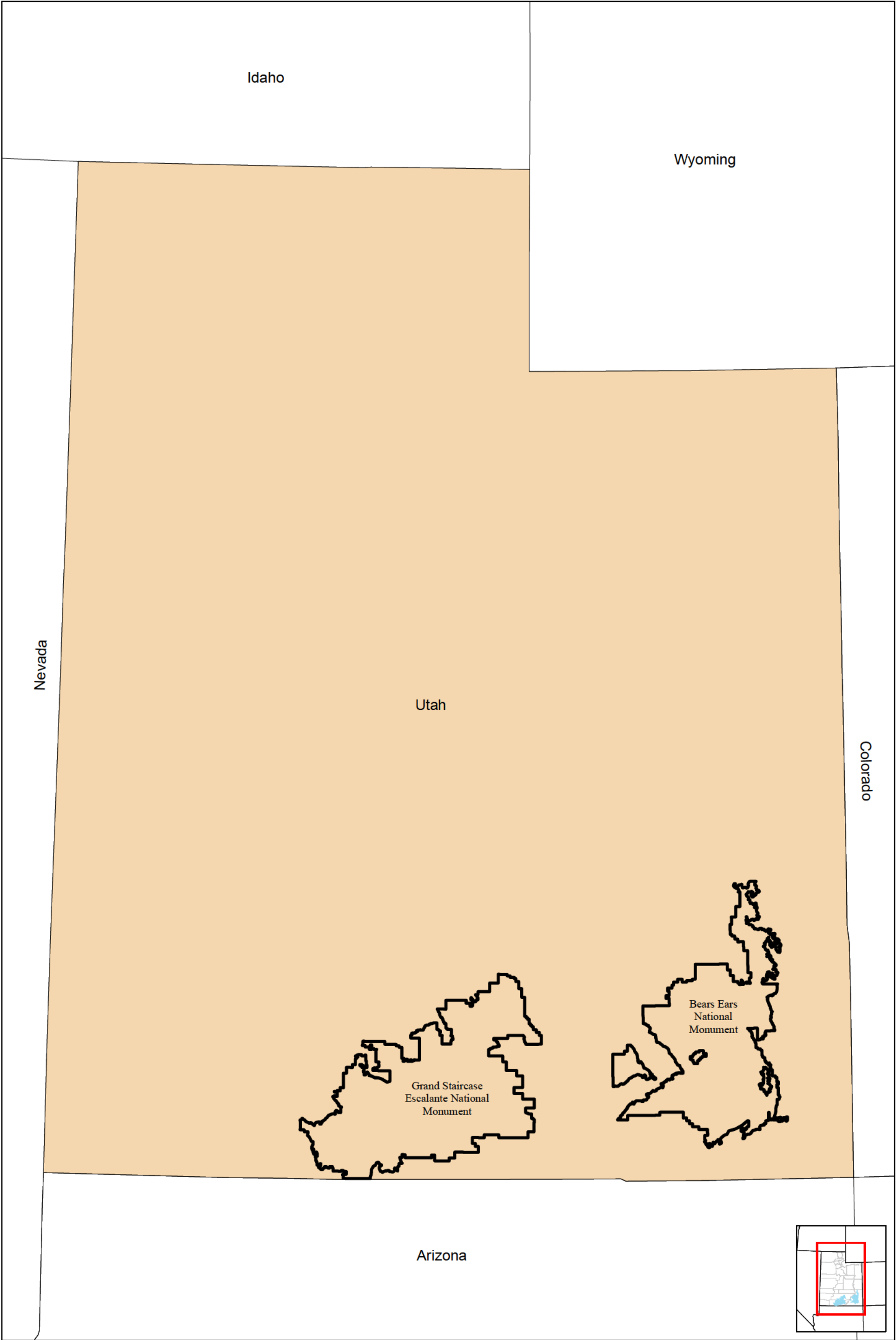
Please see attached. Also, please let me know if you need any changes made.



--

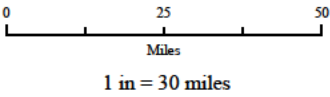
Brian Mueller  
Geospatial Program Manager  
Utah State Office/ Bureau of Land Management  
801.539.4154

# Bears Ears & Grand Staircase-Escalante National Monuments

October 26, 2017



 National Monument Boundary  
 State Boundary



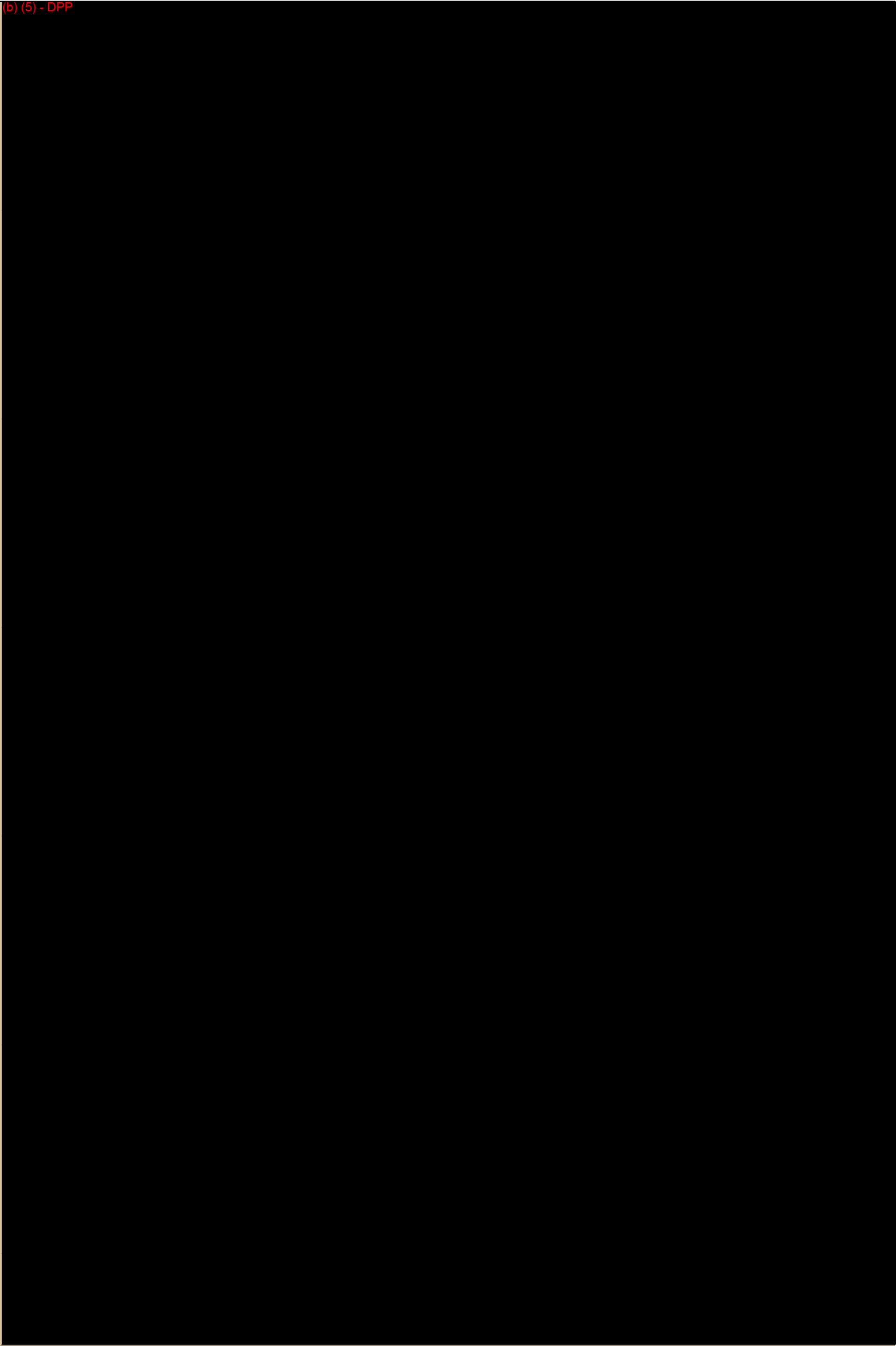
Coordinate System: NAD 1983 UTM Zone 12N  
Projection: Transverse Mercator  
Datum: North American 1983  
Units: Meter  
DOI-2019-03 00559

# Bears Ears National Monument Boundary Modification

October 26, 2017

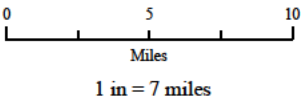
*Deliberative  
Draft -  
Privileged*

(b) (5) - DPP



- Bears Ears National Monument Boundary
- Modified Bears Ears National Monument Boundary
- Wilderness Study Area
- Bureau of Land Management (BLM)
- National Park Service (NPS)

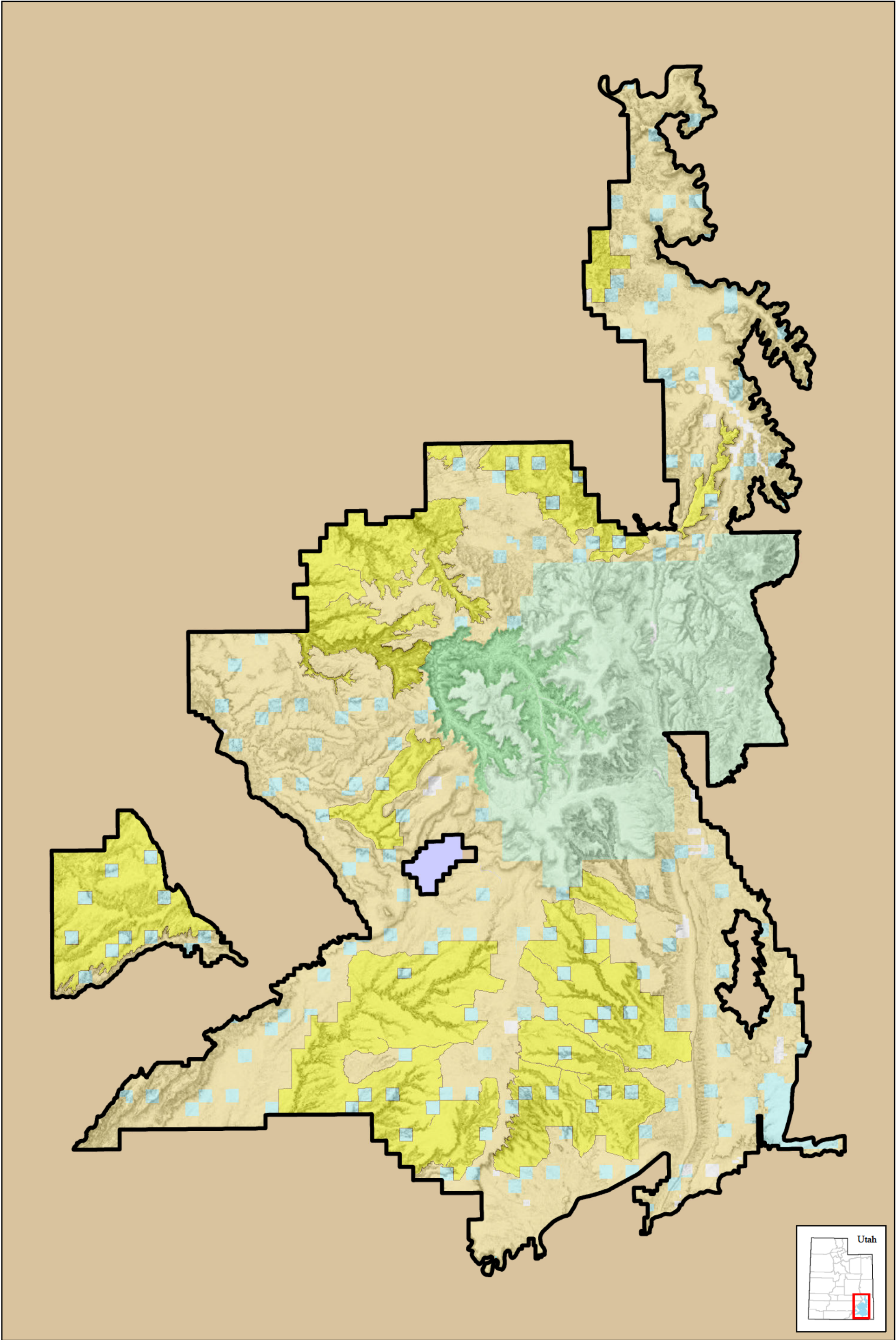
- Private
- State
- US Forest Service (USFS)
- USFS Wilderness Area



Coordinate System: NAD 1983 UTM Zone 12N  
Projection: Transverse Mercator  
Datum: North American 1983  
Units: Meter  
DOI-2019-03 00560

# Bears Ears National Monument Existing Boundary

October 26, 2017



- |                                       |                          |
|---------------------------------------|--------------------------|
| Bears Ears National Monument Boundary | Private                  |
| Wilderness Study Area                 | State; State             |
| Bureau of Land Management (BLM)       | US Forest Service (USFS) |
| National Park Service (NPS)           | USFS Wilderness Area     |

0 5 10  
Miles  
1 in = 7 miles

NORTH

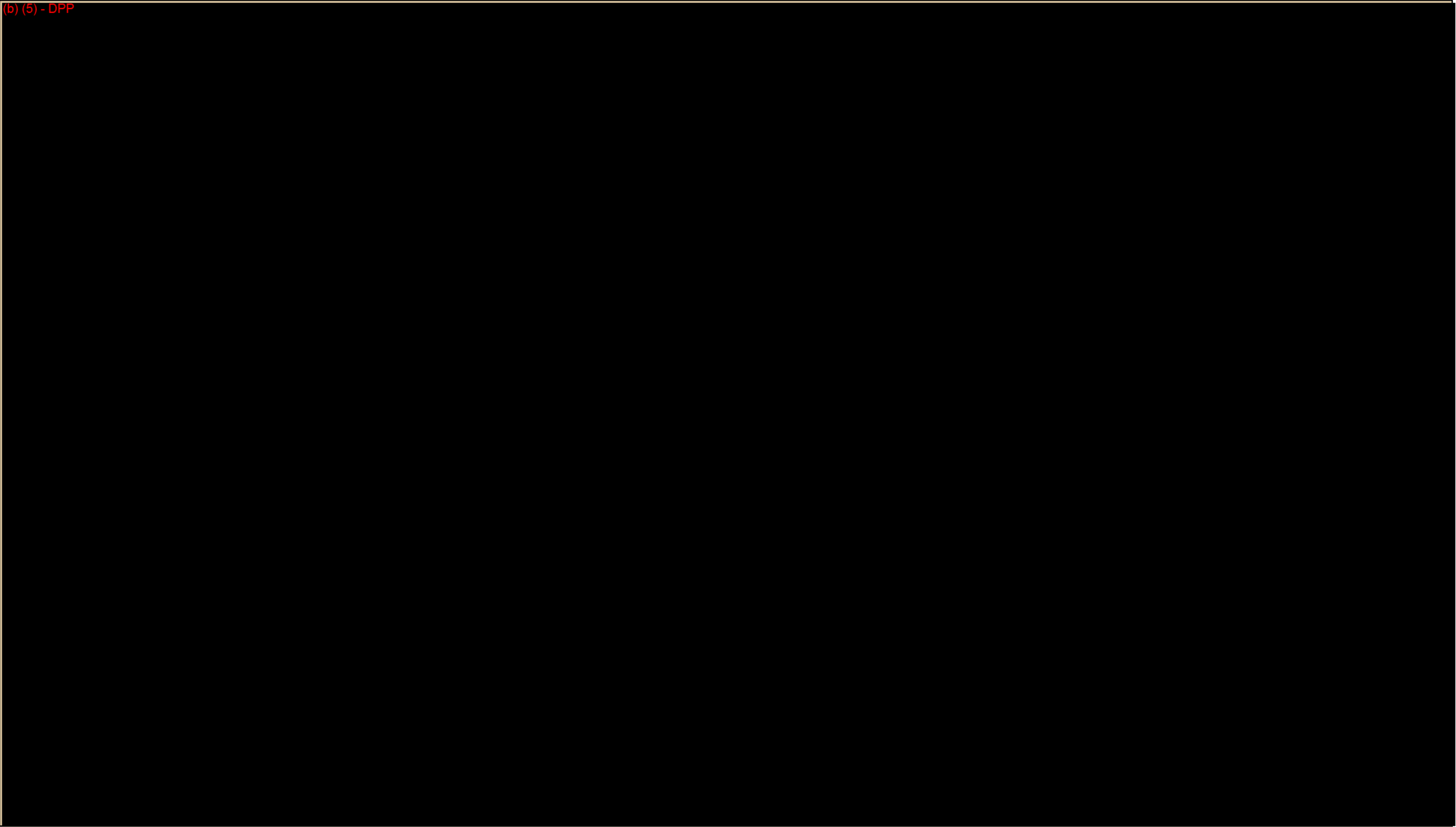
Coordinate System: NAD 1983 UTM Zone 12N  
Projection: Transverse Mercator  
Datum: North American 1983  
Units: Meter  
DOI-2019-03 00561

# Grand Staircase-Escalante National Monument Boundary Modification

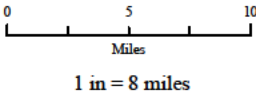
October 26, 2017

*Deliberative  
Draft –  
Privileged*

(b) (5) - DPP



- Grand Staircase-Escalante National Monument Boundary
- Modified Grand Staircase-Escalante National Monument Boundary
- Wilderness Study Area
- Bureau of Land Management (BLM)
- Private

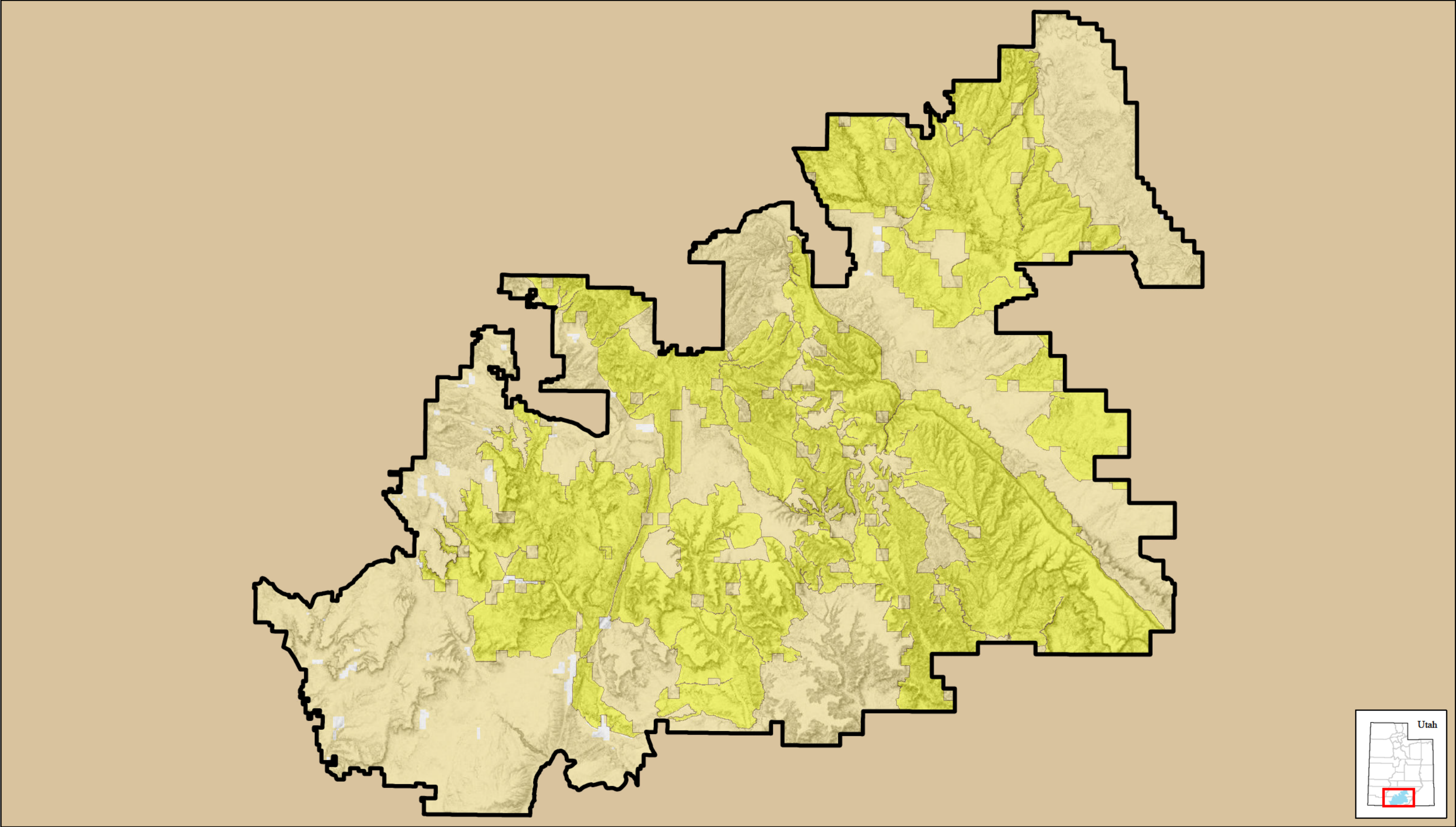


Coordinate System: NAD 1983 UTM Zone 12N  
Projection: Transverse Mercator  
Datum: North American 1983  
Units: Meter  
DOI-2019-03 00562



# Grand Staircase-Escalante National Monument Existing Boundary

October 26, 2017



- Grand Staircase-Escalante National Monument Boundary
- Wilderness Study Area
- Bureau of Land Management (BLM)
- Private

0 5 10  
Miles  
1 in = 8 miles

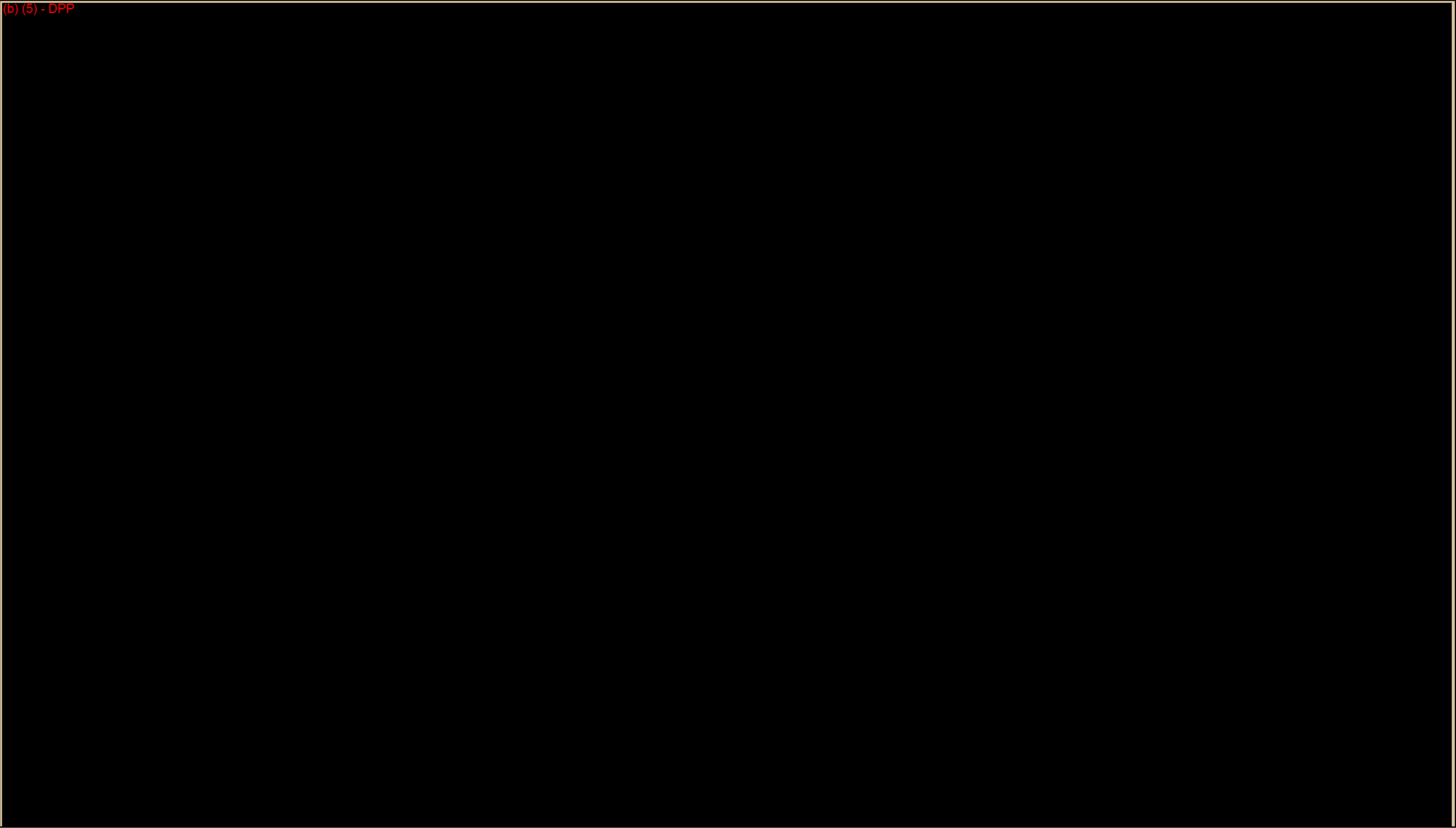


Coordinate System: NAD 1983 UTM Zone 12N  
Projection: Transverse Mercator  
Datum: North American 1983  
Units: Meter  
DOI-2019-03 00563

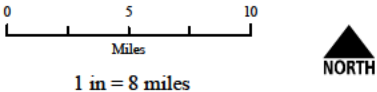
# Grand Staircase-Escalante National Monument Boundary Modification

October 26, 2017

*Deliberative  
Draft –  
Privileged*



- Grand Staircase-Escalante National Monument Boundary
- 
- Wilderness Study Area



Coordinate System: NAD 1983 UTM Zone 12N  
Projection: Transverse Mercator  
Datum: North American 1983  
Units: Meter  
DOI-2019-03 00564