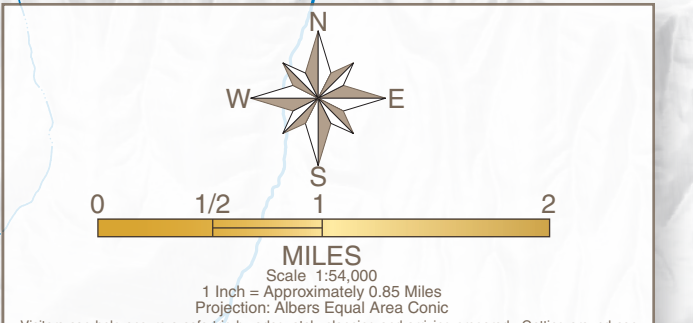
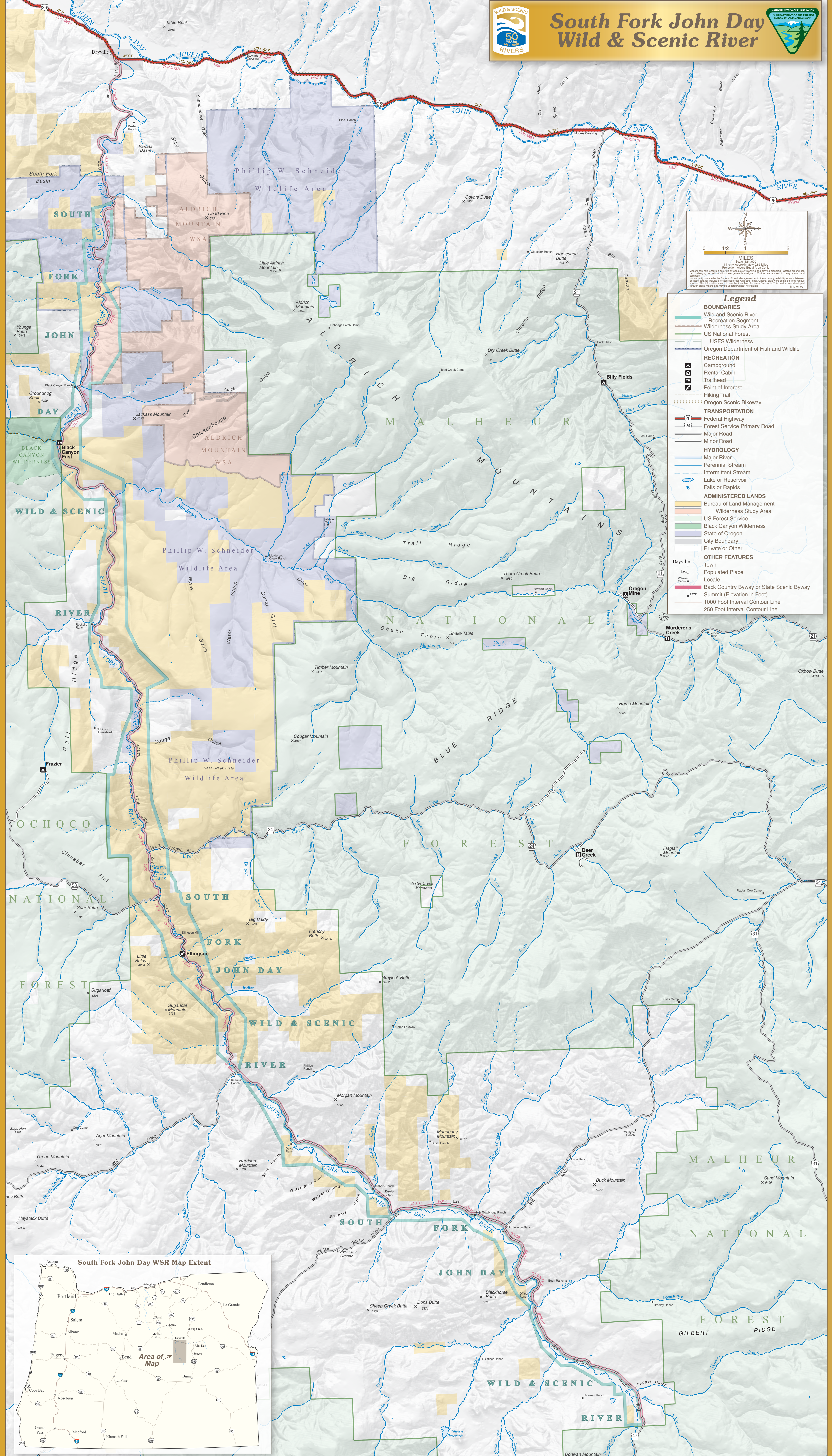


South Fork John Day Wild & Scenic River



Scale: 1:50,000
1 Inch = Approximately 0.83 Miles
Projection: NAD83 Oregon Albers Equal Area Conic
Water users have access to water by an adequately designed and approved system. Getting around on foot is only for the purpose of emergency preparedness. Access is subject to change without notice. The information on this map was last updated in 2014. The information on this map was last updated in 2014. The information on this map was last updated in 2014. M17-04-02

Legend

BOUNDARIES

- Wild and Scenic River Recreation Segment
- Wilderness Study Area
- US National Forest
- USFS Wilderness
- Oregon Department of Fish and Wildlife

RECREATION

- Campground
- Rental Cabin
- Trailhead
- Point of Interest
- Hiking Trail
- Oregon Scenic Bikeway

TRANSPORTATION

- Federal Highway
- Forest Service Primary Road
- Major Road
- Minor Road

HYDROLOGY

- Major River
- Perennial Stream
- Intermittent Stream
- Lake or Reservoir
- Falls or Rapids

ADMINISTERED LANDS

- Bureau of Land Management
- Wilderness Study Area
- US Forest Service
- Black Canyon Wilderness
- State of Oregon
- City Boundary
- Private or Other

OTHER FEATURES

- Town
- Populated Place
- Locale
- Back Country Byway or State Scenic Byway
- Summit (Elevation in Feet)
- 1000 Foot Interval Contour Line
- 250 Foot Interval Contour Line

