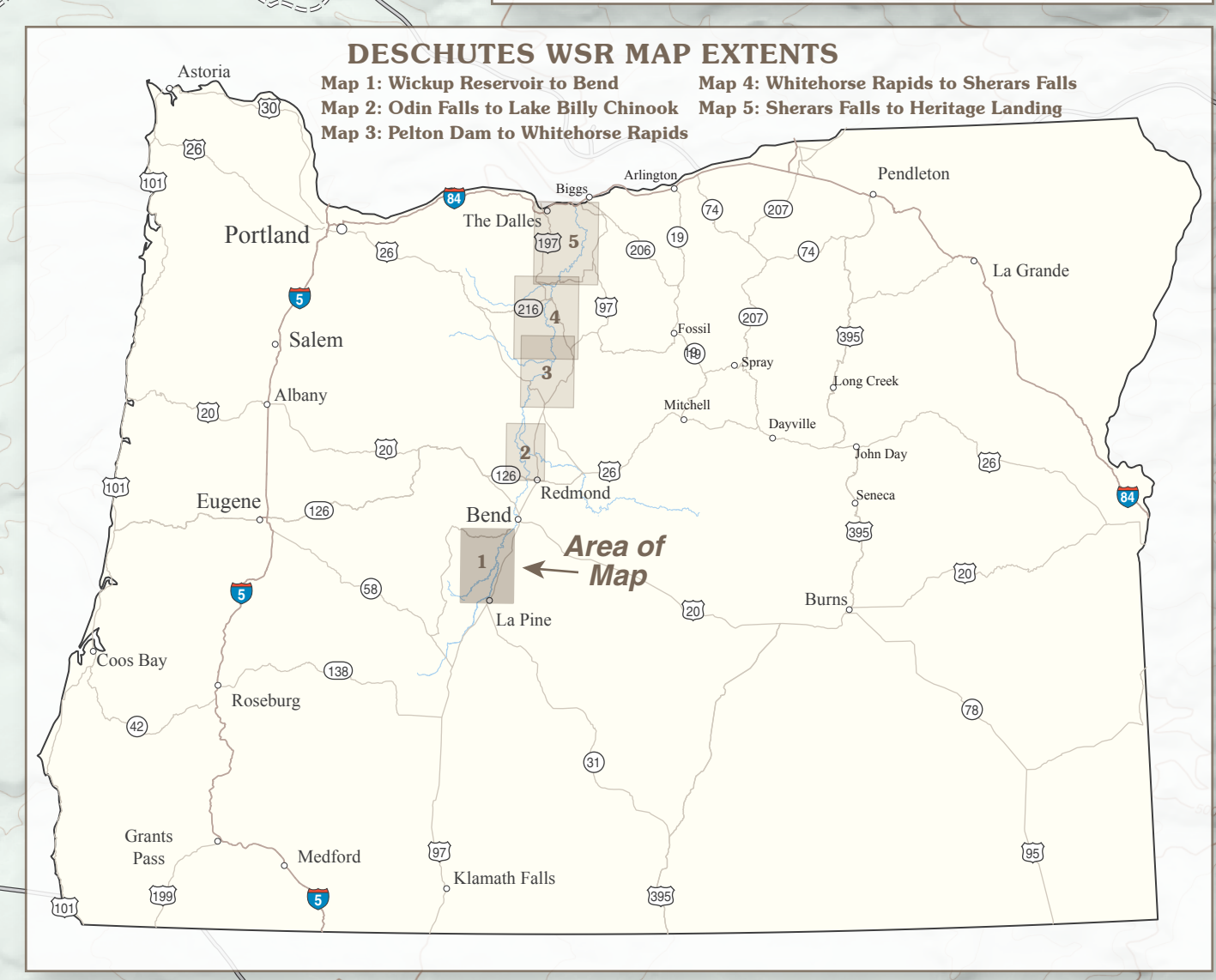
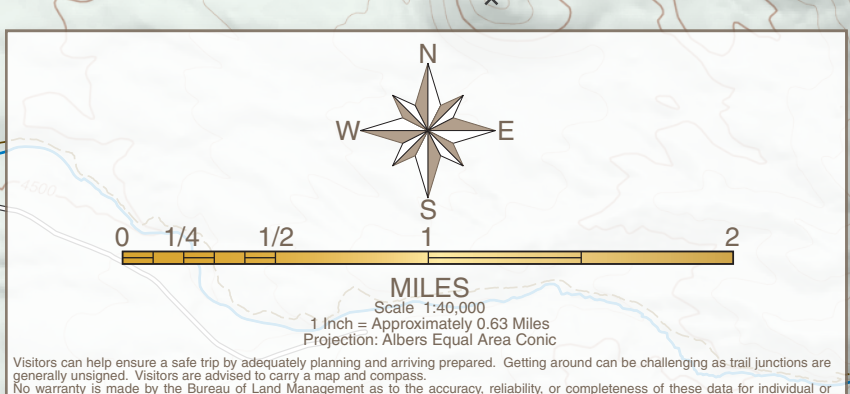
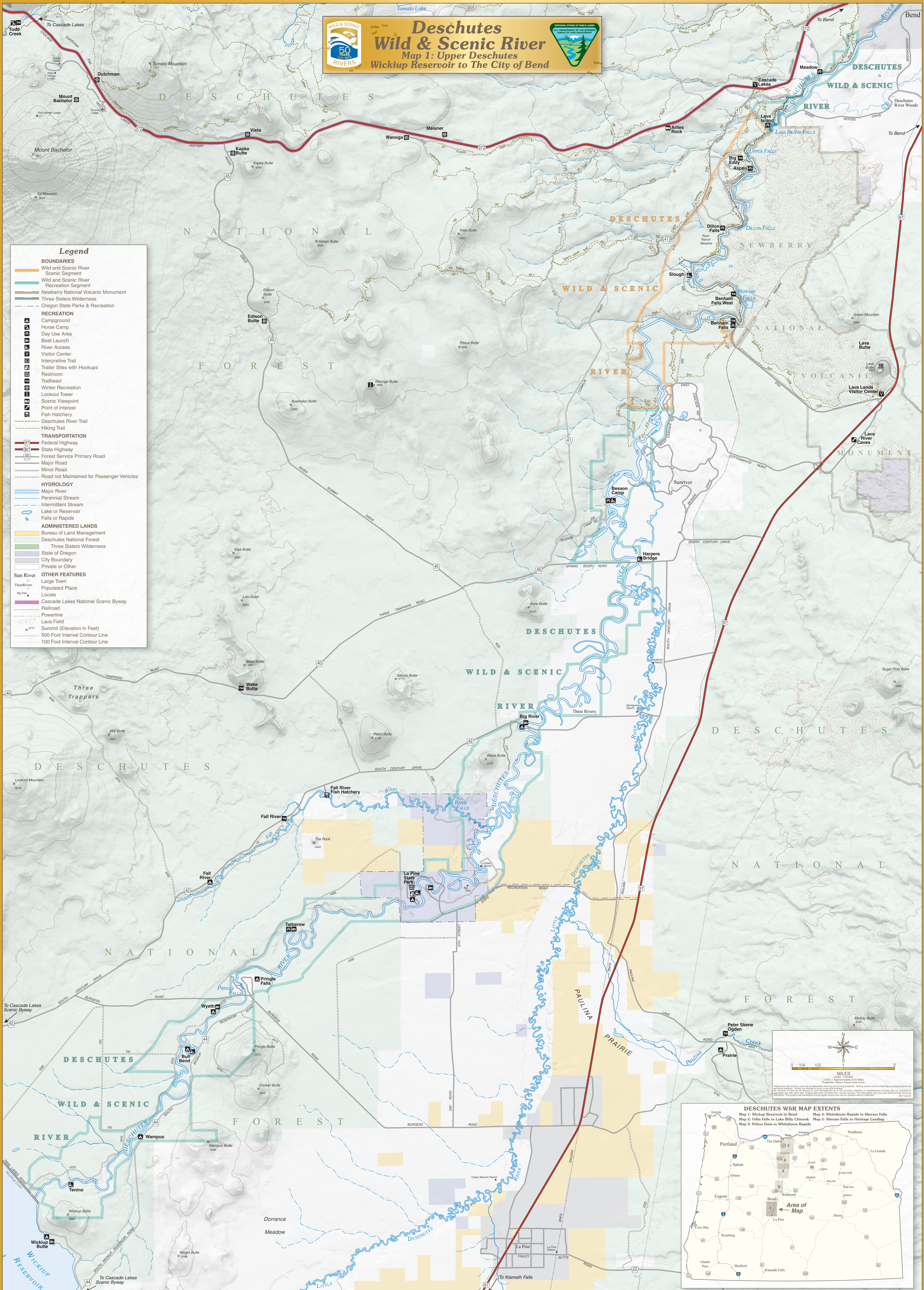


Deschutes Wild & Scenic River
Map 1: Upper Deschutes
 Wickiup Reservoir to The City of Bend



- Legend**
- BOUNDARIES**
 - Wild and Scenic River
 - Scenic Segment
 - Wild and Scenic River Recreation Segment
 - Newberry National Volcanic Monument
 - Three Sisters Wilderness
 - Oregon State Parks & Recreation
 - RECREATION**
 - Campground
 - Horse Camp
 - Day Use Area
 - Boat Launch
 - River Access
 - Visitor Center
 - Interpretive Trail
 - Trailer Sites with Hookups
 - Restroom
 - Trailhead
 - Winter Recreation
 - Lookout Tower
 - Scenic Viewpoint
 - Point of Interest
 - Fish Hatchery
 - Deschutes River Trail
 - Hiking Trail
 - TRANSPORTATION**
 - Federal Highway
 - State Highway
 - Forest Service Primary Road
 - Major Road
 - Minor Road
 - Road not Maintained for Passenger Vehicles
 - HYDROLOGY**
 - Major River
 - Perennial Stream
 - Intermittent Stream
 - Lake or Reservoir
 - Falls or Rapids
 - ADMINISTERED LANDS**
 - Bureau of Land Management
 - Deschutes National Forest
 - Three Sisters Wilderness
 - State of Oregon
 - City Boundary
 - Private or Other
 - OTHER FEATURES**
 - Large Town
 - Populated Place
 - Locale
 - Cascade Lakes National Scenic Byway
 - Railroad
 - Powerline
 - Lava Field
 - Summit (Elevation in Feet)
 - 500 Foot Interval Contour Line
 - 100 Foot Interval Contour Line



DESCHUTES WSR MAP EXTENTS
 Map 1: Wickiup Reservoir to Bend
 Map 2: Odin Falls to Lake Billy Chinoak
 Map 3: Pelton Dam to Whitehorse Rapids
 Map 4: Whitehorse Rapids to Sherars Falls
 Map 5: Sherars Falls to Heritage Landing