

# TWIN LAKES RECREATION AREA

The Bureau of Land Management  
Spokane District



## WELCOME TO TWIN LAKES RECREATION AREA!

Nestled in at the south end of Upper Twin Lake, this site offers picnicking and camping in a serene setting with a few primitive campsites. Bright yellow balsam root are abundant in the spring. Popular activities here are fishing and paddling on the lakes, hiking, backpacking, hunting, horseback riding, waterfowl and wildflower viewing and photography. Anglers fish for stocked rainbow trout, largemouth bass, yellow perch, yellow bullhead, black crappie, and sunfish. Trails wind through shrub-steppe uplands, and the upper Lake Creek Canyon. Developed wetlands supporting numerous bird populations north of the lakes invite overland hikers to come and explore.



## KNOW BEFORE YOU GO

- ✓ The Twin Lakes Recreation Area is open **YEAR ROUND**. No fees. There are no services available.
- ✓ Both lakes have primitive **BOAT LAUNCHES**, and the upper lake also has a small dock.
- ✓ For **FISHING** or **HUNTING** regulations in the Twin Lakes area, contact the Washington State Department of Fish and Wildlife.

## DIRECTIONS

From Highway 28 at Harrington turn west onto Coffeepot Road and travel about 12 miles, then turn right onto Highline Road. Watch for public land access signs. Drive 1.5 miles to the entrance on the right. Follow this access road for about 2 miles to reach the recreation site.

## CONTACT INFO



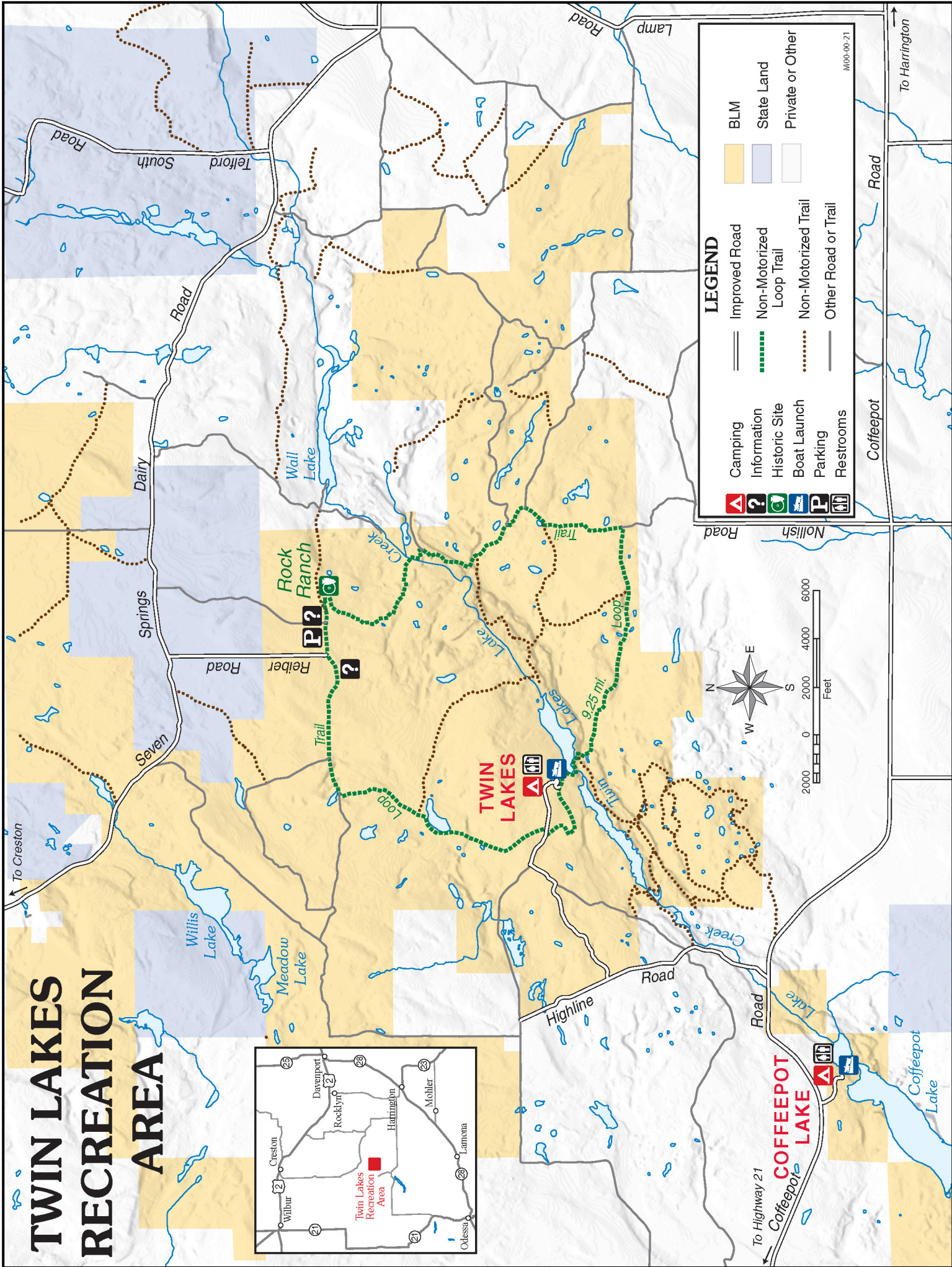
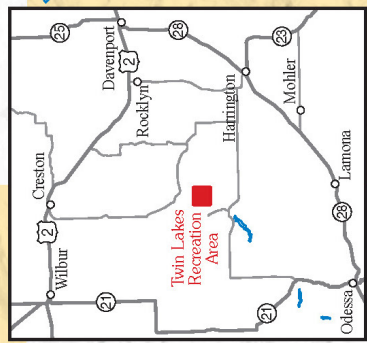
1103 N Fancher Rd,  
Spokane, WA 99212  
509-536-1200  
BLM\_OR\_SP\_Mail@blm.gov

## POINT OF INTEREST

This part of the Channeled Scablands with more than 16,000 acres of BLM public land is managed for its recreational opportunities and wildlife habitat

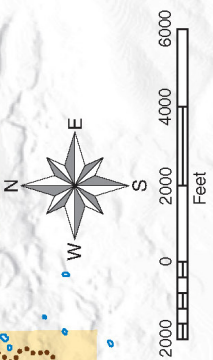


# TWIN LAKES RECREATION AREA



**LEGEND**

	Camping		Improved Road		BLM
	Information		Non-Motorized Loop Trail		State Land
	Historic Site		Non-Motorized Trail		Private or Other
	Boat Launch		Other Road or Trail		
	Parking				
	Restrooms				



M000-00-21

To Highway 21  
**COFFEETOP LAKE**  
 Coffeepot Lake

To Harrington