

FISHTRAP RECREATION AREA

The Bureau of Land Management
Spokane District



WELCOME TO FISHTRAP RECREATION AREA!

Step into the past and explore more than 8,000 acres of beautiful landscapes including an old farmstead and habitats ranging from forest and shrub-steppe to grass and wetlands. The historic Folsom Farm demonstrates how the landscape was converted into small farms, ranches and communities beginning in the late 1800's. Displays tell the history of farm life. Enjoy the chance to study numerous species of birds and wildlife, picnic, backpack, horseback ride, mountain bike, or hunt throughout the entire Fishtrap area. Fishing for stocked rainbow trout is popular at Fishtrap Lake and during the winter at Hog Canyon Lake.

KNOW BEFORE YOU GO

- ✓ Entire area is open **YEAR ROUND**. There are no fees.
- ✓ There are **NO FACILITIES** or services available with the exception of one vault toilet at Folsom Farm.
- ✓ Both lakes have concrete **BOAT LAUNCHES** maintained by Washington Department of Fish and Wildlife (paid in advance parking permit from WDFW is required.)

DIRECTIONS

Fishtrap is just a 30-mile drive southwest of Spokane, Washington. From Interstate 90, take Exit 254, and then travel east for 1.75 miles to access the public lands.

CONTACT INFO



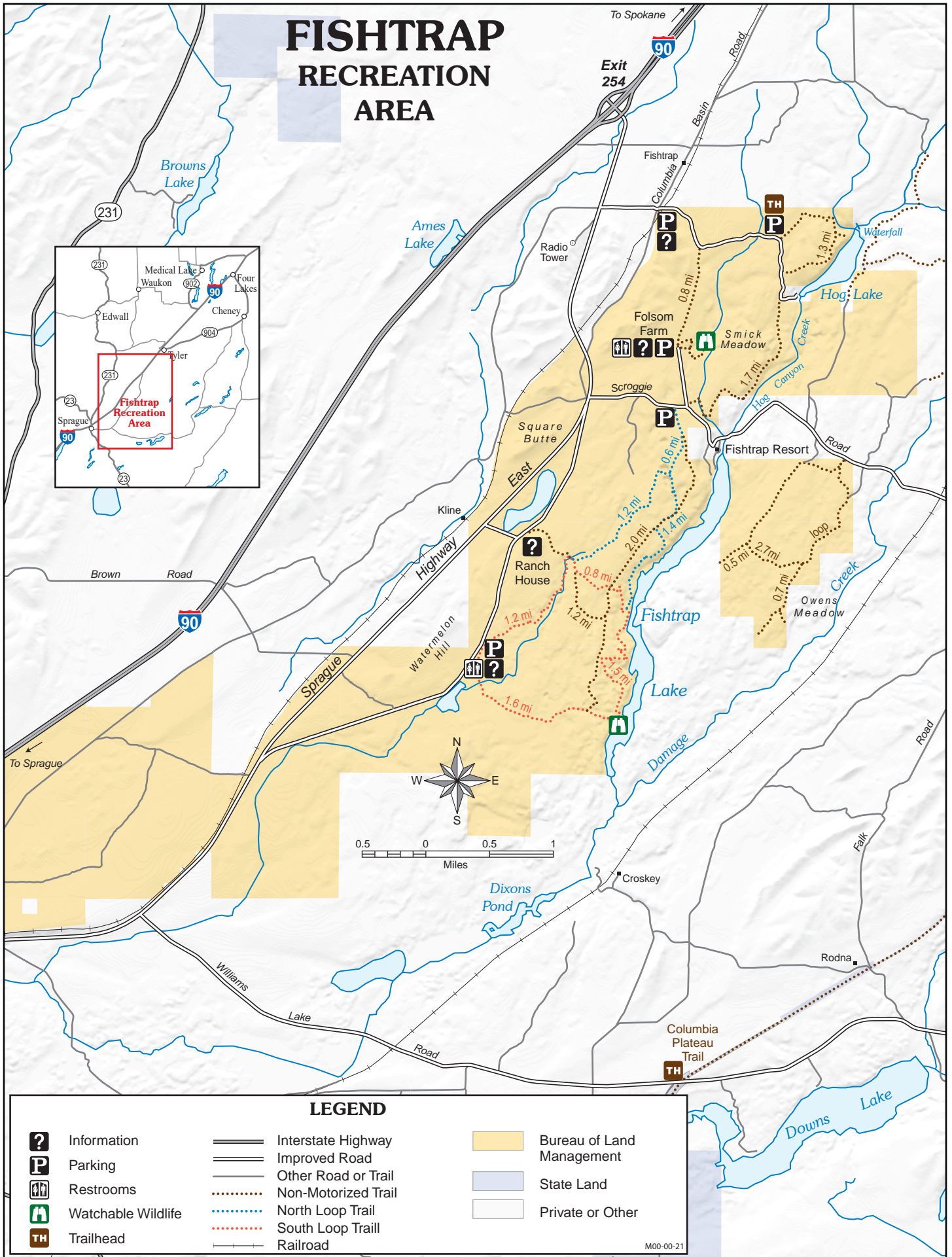
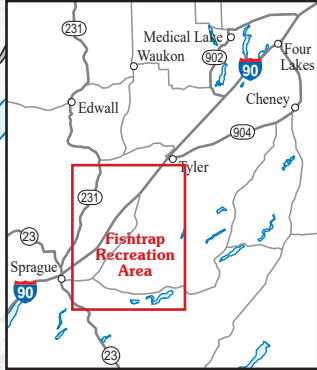
1103 N Fancher Rd,
Spokane, WA 99212
509-536-1200
BLM_OR_SP_Mail@blm.gov

POINT OF INTEREST

The Great Missoula Ice Age Floods that scoured the region more than 12,000 years ago carved out this unique landscape.



FISHTRAP RECREATION AREA



LEGEND

- | | | |
|--------------------|---------------------|---------------------------|
| Information | Interstate Highway | Bureau of Land Management |
| Parking | Improved Road | State Land |
| Restrooms | Other Road or Trail | Private or Other |
| Watchable Wildlife | Non-Motorized Trail | |
| Trailhead | North Loop Trail | |
| | South Loop Trail | |
| | Railroad | |