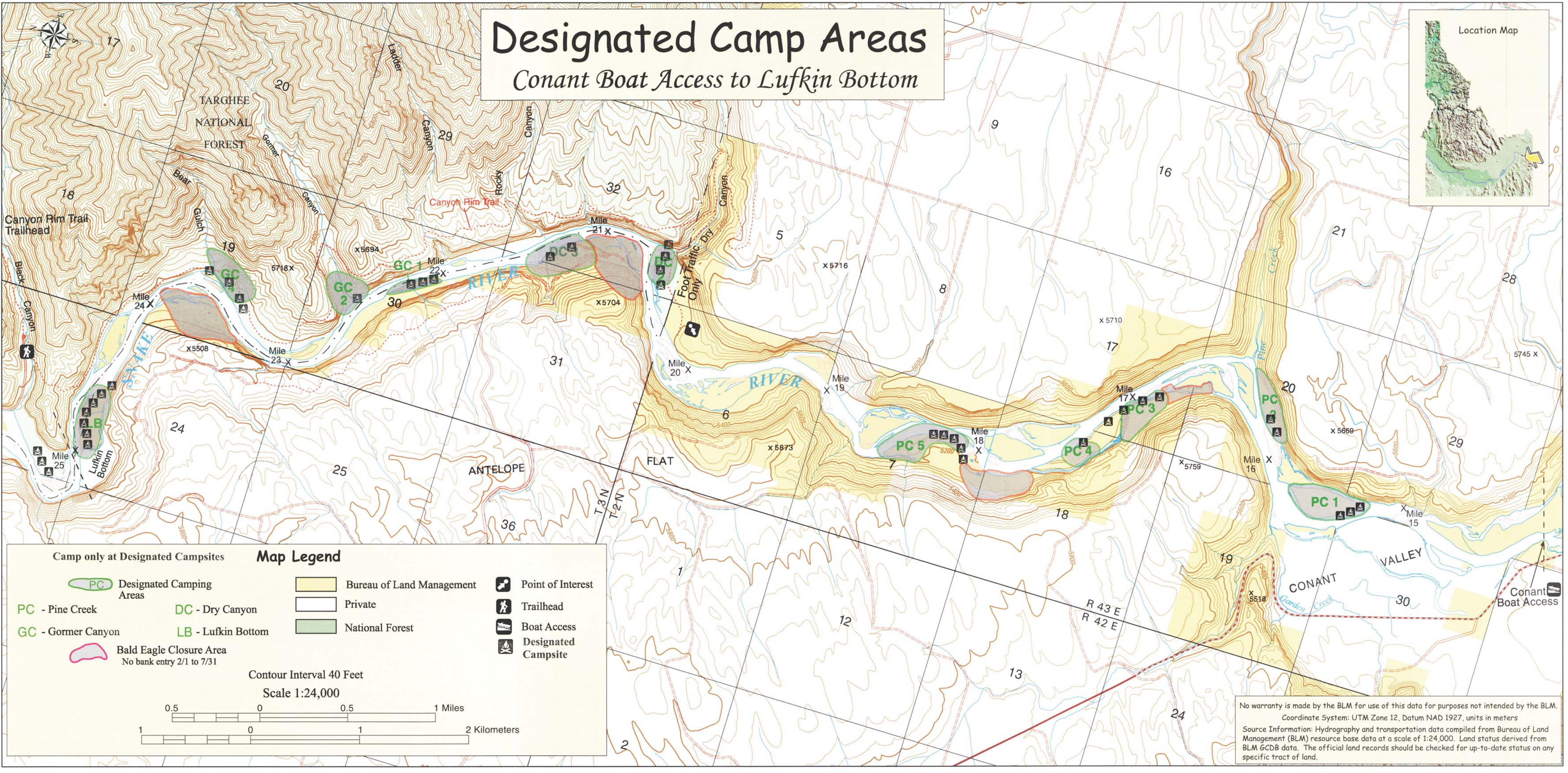


# Designated Camp Areas

## Conant Boat Access to Lufkin Bottom



**Camp only at Designated Campsites**

**Map Legend**

PC	Designated Camping Areas		Bureau of Land Management		Point of Interest
PC	- Pine Creek		Private		Trailhead
GC	- Gorner Canyon		National Forest		Boat Access
	Bald Eagle Closure Area No bank entry 2/1 to 7/31				Designated Campsite

Contour Interval 40 Feet  
Scale 1:24,000

0.5 0 0.5 1 Miles  
1 0 1 2 Kilometers

No warranty is made by the BLM for use of this data for purposes not intended by the BLM.  
Coordinate System: UTM Zone 12, Datum NAD 1927, units in meters  
Source Information: Hydrography and transportation data compiled from Bureau of Land Management (BLM) resource base data at a scale of 1:24,000. Land status derived from BLM GCDB data. The official land records should be checked for up-to-date status on any specific tract of land.

# River Ethics

Below are some practices which can minimize your impact on river corridors

- Plan ahead and prepare. Be aware of river use restrictions before leaving home. Unnecessary impact to river corridors can be avoided by carefully preparing for your trip.
- Concentrate use on established sites. Use designated camp areas that have been established by the responsible managing agency.
- Select an appropriate boat landing, campsite and kitchen site that is most resistant to impact. Set up kitchen and sleeping areas in a location where there has been previous use at that particular site.
- Use fire responsibly. If building a campfire, don't create new fire rings, use dead or down wood or bring your personal firewood or charcoal, keep the fire small, and contain leftover ash in a fire pan. Additionally, if at all possible pack out the remnants of your fire. Avoid burning food, glass, aluminum cans in camp fires.

- Always stay on trails that already exist.
- When leaving camp make sure it is clean of litter, toilet paper products, and food scraps.
- Avoid places where the impact of previous camping activity is just beginning to allow the regeneration of natural vegetation. Observe and respect the restrictions in Wildlife Habitat (Violations Punishable under 43 CFR 8364.1d) and Campground Regenerative Areas.
- Be considerate of others in nearby camp areas and practice good river etiquette.

Leave what you find so that others may enjoy in the sense of discovery.

## The Scoop on Poop...South Fork of the Snake River portable toilet requirements

It is mandatory for all overnight campers from Conant Boat Access to Lufkin Bottom to carry out all solid human waste using an approved portable-toilet system (43 CFR 8365.1-6).

An approved portable toilet system must be reusable; washable; watertight; and can be flushed out at a proper treatment facility such as a trailer dump station or home toilet. Plastic bags may not be used to store or transport human waste. Liners in your toilets are not allowed !!! The toilet system must be large enough to accommodate your entire party for the entire length of your trip.

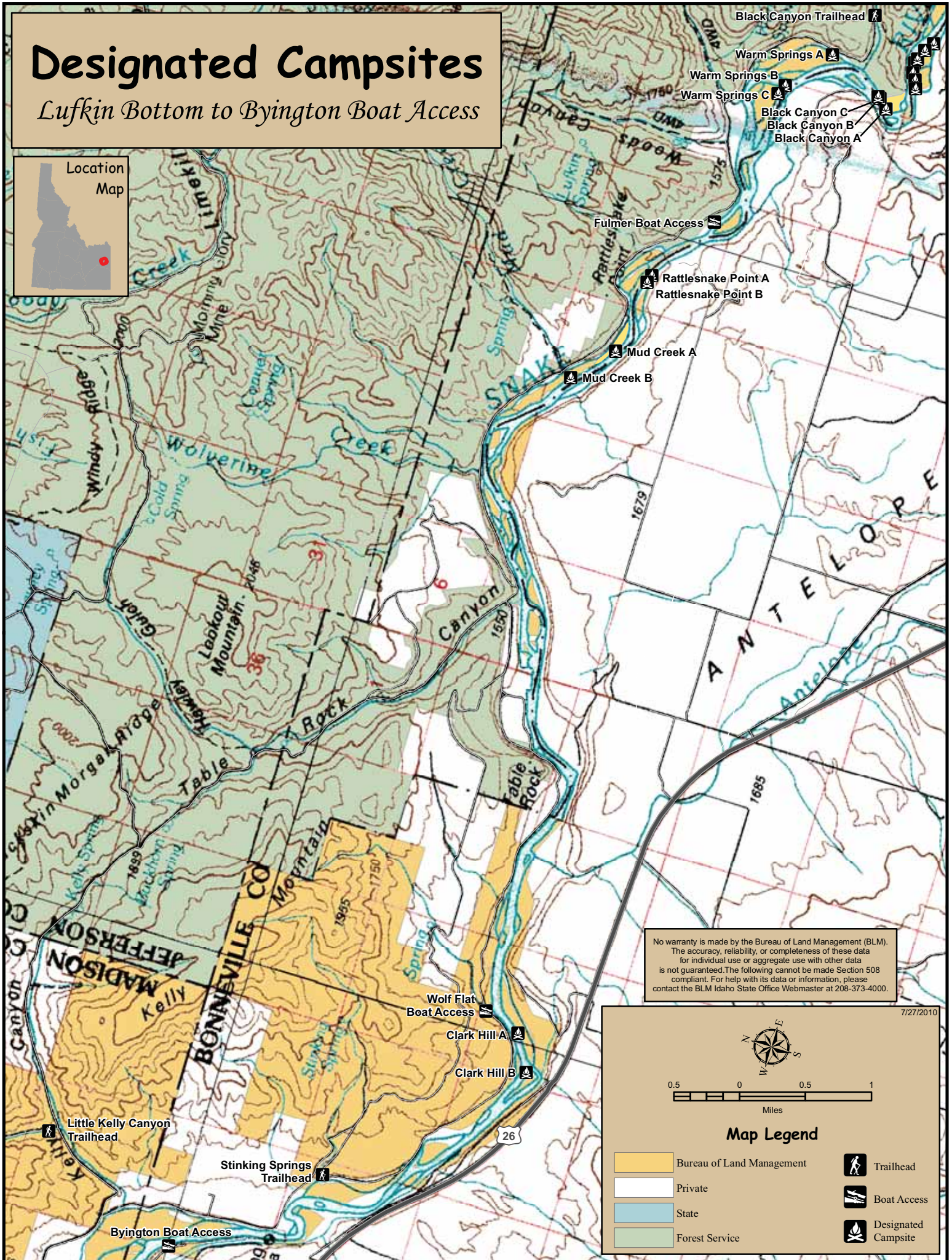
Three dumping stations are available for disposal of waste:  
Palisades Dam (Located in the campground)  
Byington Boat Access  
Beeches Corner (Junction of Highway 26 and Ammon Road)

For Further Information: Bureau of Land Management / Idaho Falls District Office  
1405 Hollipark Drive / Idaho Falls, Idaho 83401 / [www.id.blm.gov](http://www.id.blm.gov)



# Designated Campsites

Lufkin Bottom to Byington Boat Access



No warranty is made by the Bureau of Land Management (BLM). The accuracy, reliability, or completeness of these data for individual use or aggregate use with other data is not guaranteed. The following cannot be made Section 508 compliant. For help with its data or information, please contact the BLM Idaho State Office Webmaster at 208-373-4000.

7/27/2010

0.5 0 0.5 1  
Miles

### Map Legend

Bureau of Land Management	Trailhead
Private	Boat Access
State	Designated Campsite
Forest Service	