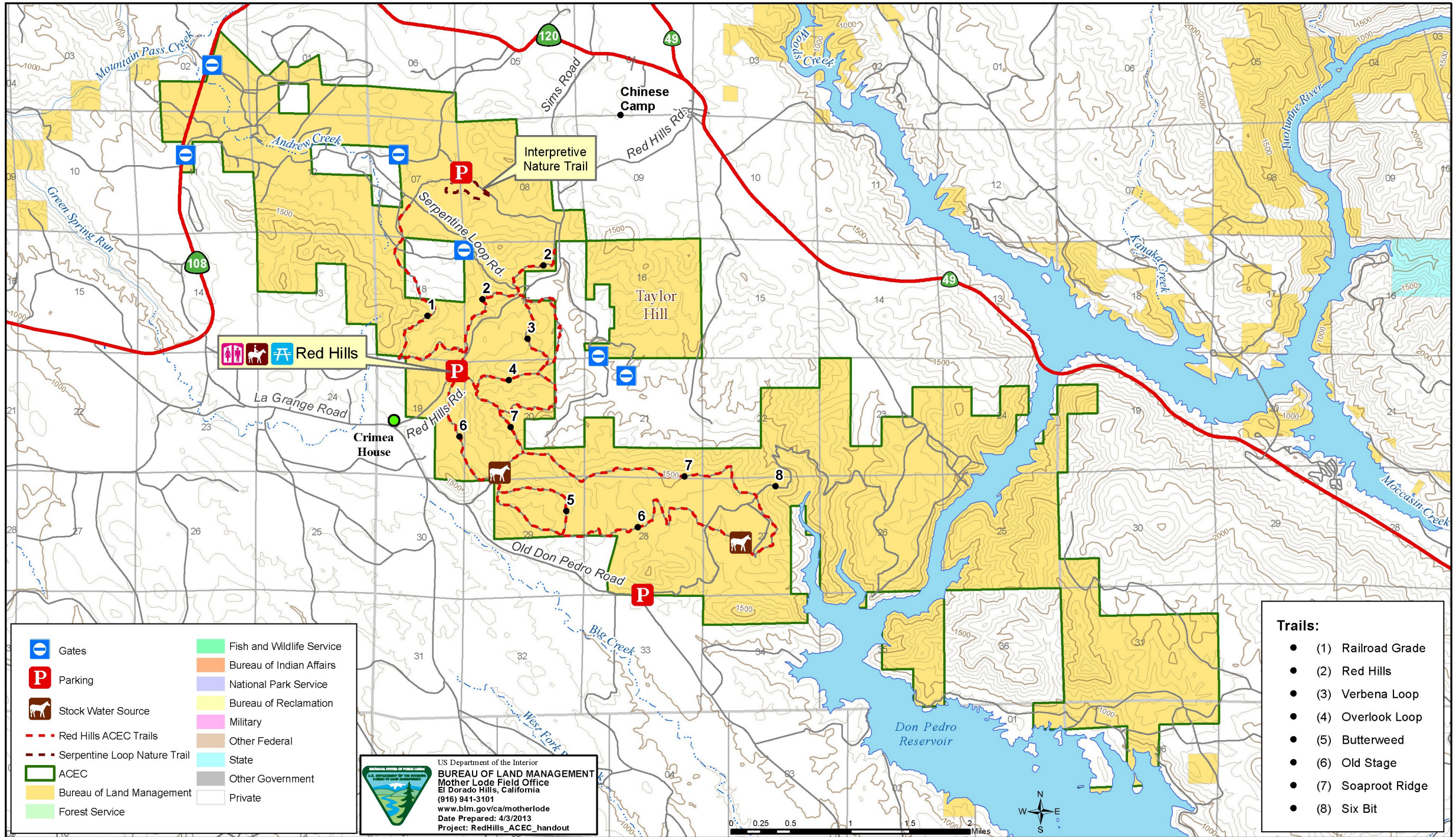


# Red Hills ACEC - Area of Critical Environmental Concern



Red Hills

Interpretive Nature Trail

Crimea House

Chinese Camp

Taylor Hill

Don Pedro Reservoir

- |                              |                           |
|------------------------------|---------------------------|
| Gates                        | Fish and Wildlife Service |
| Parking                      | Bureau of Indian Affairs  |
| Stock Water Source           | National Park Service     |
| Red Hills ACEC Trails        | Bureau of Reclamation     |
| Serpentine Loop Nature Trail | Military                  |
| ACEC                         | Other Federal             |
| Bureau of Land Management    | State                     |
| Forest Service               | Other Government          |
|                              | Private                   |

US Department of the Interior  
**BUREAU OF LAND MANAGEMENT**  
 Mother Lode Field Office  
 El Dorado Hills, California  
 (916) 941-3101  
[www.blm.gov/ca/motherlode](http://www.blm.gov/ca/motherlode)  
 Date Prepared: 4/3/2013  
 Project: RedHills\_ACEC\_handout

- Trails:**
- (1) Railroad Grade
  - (2) Red Hills
  - (3) Verbena Loop
  - (4) Overlook Loop
  - (5) Butterweed
  - (6) Old Stage
  - (7) Soaproot Ridge
  - (8) Six Bit

R13E

R14E

R15E

T1S

T1S

T2S

T2S