

Cow Mountain Recreation Area

Map & Guide

Cow Mountain is within the Mayacamas Mountains east of the City of Ukiah and west of Lakeport. It is split into two parts: South Cow Mountain with approximately 25,000 acres managed for Off-Highway Vehicles (OHV) and North Cow Mountain with approximately 27,000 acres managed for non-OHV recreation.

The Bureau of Land Management's Ukiah Field Office manages Cow Mountain to enhance recreational experiences for all users. While enjoying your public lands, please be considerate of all recreationists in the area. Remember to bring water; there is no potable water available on Cow Mountain.

**Bureau of Land Management
Ukiah Field Office**
2550 North State Street
Ukiah, California 95482
Phone: (707) 468-4000
www.blm.gov/ca/ukiah

Cow Mountain Recreation Area was set aside by Congress in 1927 to manage and enhance recreation, wildlife, watershed activities, and to preserve the right of the public to use for recreation. During the mid-1970s, Cow Mountain was split into its two parts. In October of 2006, U.S. Congress Public Law 109-362 (Section 9), part of the Northern California Coastal Wild Heritage Act, congressionally designated the Cow Mountain Recreation Area to maintain and enhance the recreational use. This designation includes motorized recreation, hiking, camping, mountain-biking, sightseeing, and horseback riding.

EMERGENCY INFORMATION In Case of Emergency Call 9-1-1

Mendocino County Sheriff (707) 463-4411
Lake County Sheriff (707) 272-4200
BLM OHV Information (707) 468-4000

Hospital Information: (Call for directions)
Mendocino County: Ukiah Valley Medical Center
275 Hospital Dr, Ukiah, CA 95482
(707) 462-3111
Lake County: Sutter Lake Side Hospital
5176 Hill Road East, Lakeport, CA 95453
Phone:(707) 262-5000

Contact Information:

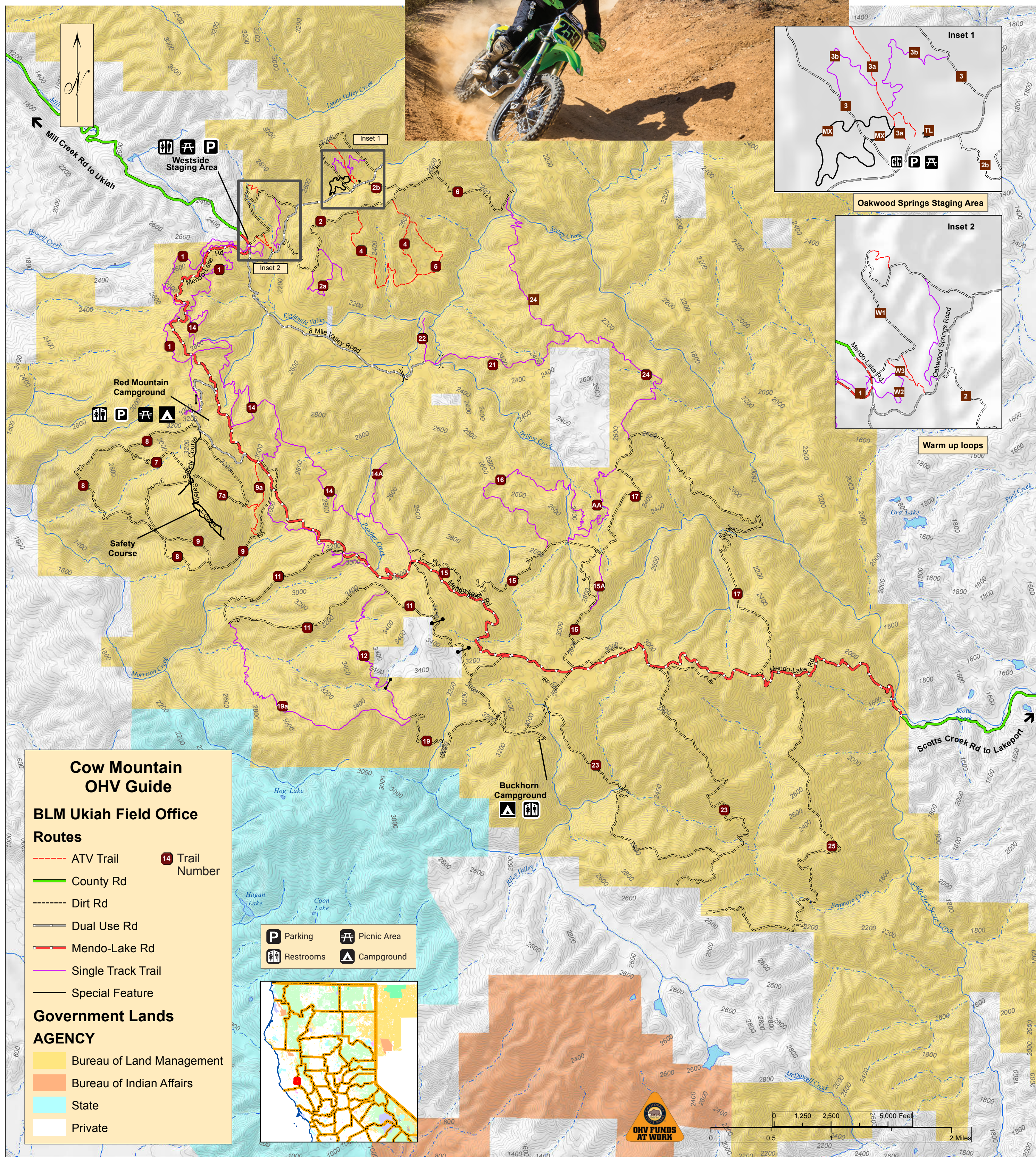
CA State Parks Off-Highway Vehicle Recreation Division
(916) 324-4442
California Fish and Game Commission (916) 653-4899
CA Department of Fish and Wildlife (916) 445-0411

PROTECT YOUR PUBLIC LANDS BY STAYING ON DESIGNATED ROUTES AND TRAILS!

All Photos by Thomas Delgado



South Cow Mountain Off-Highway Vehicle Recreation Area



South Cow Mountain Access

Mendocino County:

Take exit 548A (Talmage) from Hwy 101 and continuing on Talmage Road east approximately 1.5 miles, turn right at the intersection onto Old River Road. From Old River Road take a left onto Mill Creek Road. Continue on Mill Creek Road approximately 6 miles until you reach the Westside Staging Area. Please be considerate of neighboring private land owners while using Mill Creek Road. South Cow Mountain can also be accessed via Hwy 101 from Hopland by taking Hwy 175 (River Road) to the roundabout, continuing onto Old River Road for approximate 13 miles then take a right onto Mill Creek Road, proceed on above route.

From Lake County:

From State Hwy 29 take the 11th street exit onto Scotts Valley Road continue 0.5 miles west then turn left onto Riggs Road. Continue west on Riggs Road for 0.75 miles to Scotts Creek Road, turn right and proceed west 2 miles to entrance. This is a low water crossing.

Trail Riding and Safety Tips

PLAN SMART!

- Purchase and use all required safety gear.

- Let others know where you are riding and when you plan to return.
- Always plan ahead! Get all required maps. Bring overnight emergency supplies for longer rides.
- **Never ride alone!**
- Stay on designated trails. Restoration of damaged areas can lead to trail closures.
- Maintain your vehicle and equipment in a safe and optimal operating condition.
- Act responsibly and have respect for other recreation users and natural and cultural resources
- Take all precautions to have a safe and enjoyable trail ride. A good day riding is one with no damages or injuries at the end of the day.

Leaving a Good Impression – Tread Lightly!

- If you pack it in, pack it out. Help maintain the area by keeping it clean.
- Respect wildlife and plant species. Cut your throttle during encounters and allow them to pass. The area is their home.
- Ride at a safe speed and to the right of the road. All roads and trails are two way, avoid anticipated traffic.
- Respect other users by keeping your machine as quiet as possible. Noise is the biggest complaint of private land owners and other users.
- Be conscious of the impacts you are making on the land. Have as little impact as possible by avoiding excessive wheel spinning.

California State Sound Requirement:

All OHVs must meet current standards.

If your OHV was manufactured:	Noise Limit
Before January 1, 1986	101 dbA
On or after January 1, 1986	96 dbA
If your competition* OHV was manufactured:	Noise Limit
Before January 1, 1998	101 dbA
On or after January 1, 1998	96 dbA

*Competition Off-Highway Vehicles are those that are not manufactured to comply with EPA noise or California emission standards. For information on designation of your OHV, refer to your owner's manual or contact your local dealership. If you would like to have your ATV or motorcycle tested for sound compliance, please call the BLM Ukiah Field Office.

Regulations

- Your Vehicle **MUST** be properly licensed or have current OHV registration (green or red sticker).
- All OHVs must be equipped with a properly installed USDA Forest Service approved spark arrester.
- State law prohibits passengers on ATVs unless the ATV was specifically designed for two or more people, this includes having seatbelts for all passengers in 4x4s or UTVs.
- ATV riders must wear DOT approved helmets at all times.
- Yield right of way to pedestrians, horses or bicycles.

- It is **ILLEGAL** to operate an OHV while under the influence of drugs or alcohol or while in possession of an open container of alcohol.
- It is illegal to operate an OHV while carrying a loaded firearm.
- ATV riders under 18 must possess a Safety Certificate or be supervised by an adult with one.
- ATV riders under 14 must be under the direct supervision of an adult with a Safety Certificate.

This does not include all California OHV laws and regulations. Please make sure you know the law, it is your responsibility. For more information, contact the CA Department of Motor Vehicles or visit dmv.gov.

Things to Remember!

Hunting is allowed in the area. Hunters should familiarize themselves with trails to ensure safety for both themselves and riders. It is unlawful to shoot within 150 yards of a developed site or dwelling, including campgrounds, staging areas, and across roads or trails. Shooting is only allowed in areas indicated on the map(s).

South Cow Mountain is **CLOSED** during periods of heavy rain and snow to protect the roads and trails from damage. Please contact the Ukiah Field Office prior to visiting to ensure it is open and for weather closure policy. Alternate OHV areas are located at the Knoxville Recreation Area and the Elk Mountain area in the Mendocino National Forest.



North Cow Mountain Recreation Area

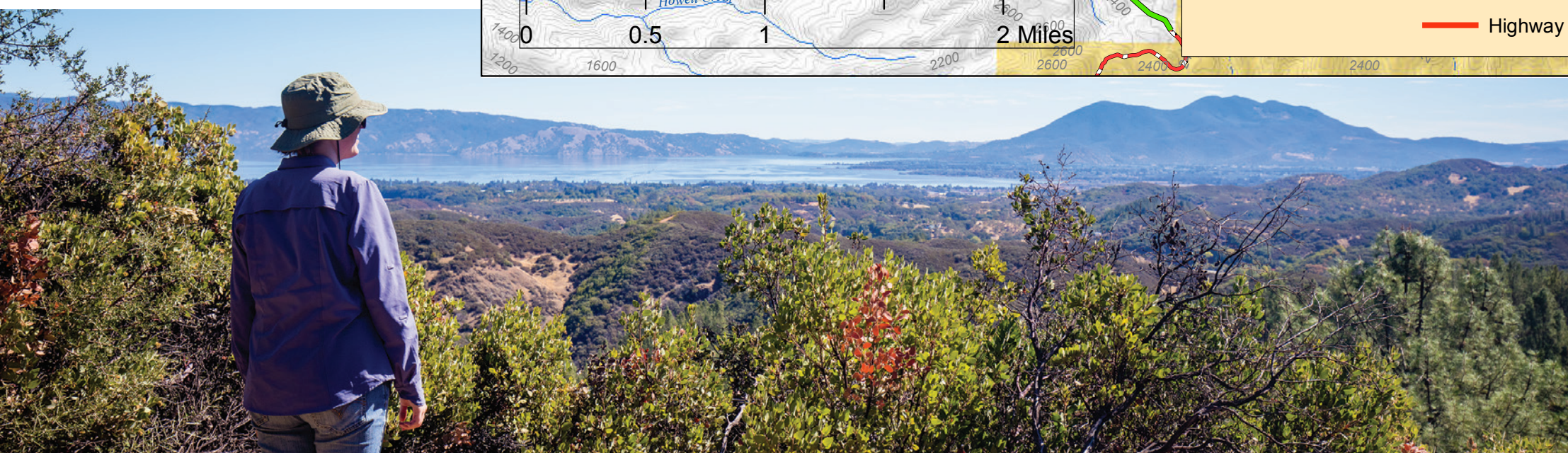
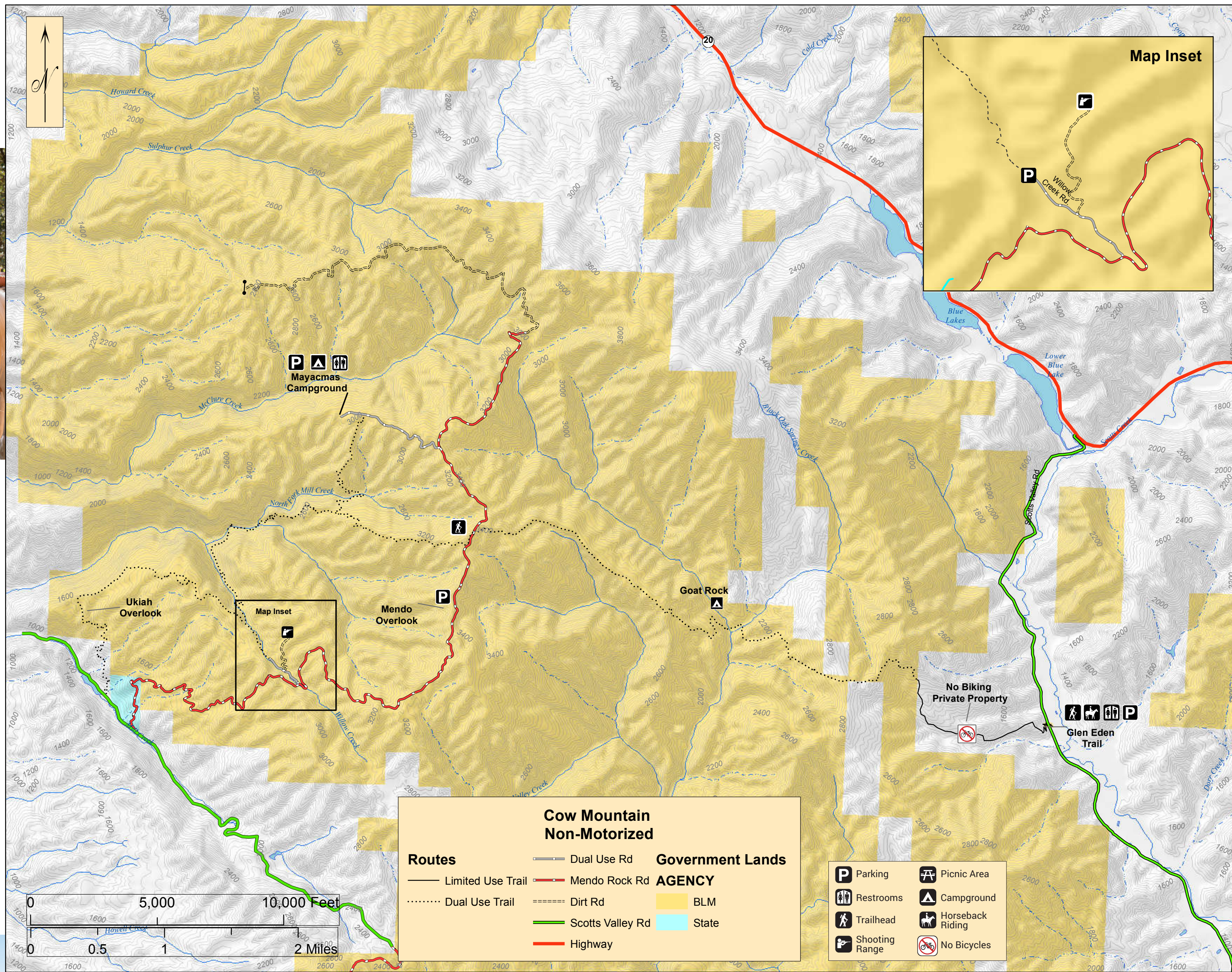


Access

North Cow Mountain can be accessed by taking exit 548A (Talmage) from Hwy 101 and continuing on Talmage Road east approximately 1.5 miles, turn right at the intersection onto Old River Road. From Old River Road take a left onto Mill Creek Road. Continue on Mill Creek Road about 3 miles until you reach Mendo Rock Road and take a left. Mendo Rock Road is a narrow, winding dirt road with steep slopes and few pullouts. Large recreational vehicles, travel trailers and horse trailers are not recommended. The Area can also be accessed via Hwy 101 from Hopland by taking Hwy 175 (River Road) to the roundabout, continuing onto Old River Road for approximate 13 miles then take a right onto Mill Creek Road, proceed on above route.

From State Hwy 29 take the 11th street exit onto Scotts Valley Road continue 6 miles until you reach the Glen Eden Trail Head.

From State Hwy 20 take Scotts Valley Road approximate 2.5 miles until you reach the Glenn Eden Trail Head.



Activities

Hunting and Fishing

Hunting is one of the major recreational activities in the area. The following have been historically hunted on North Cow Mountain: black tailed deer, black bear, and feral pig, quail, dove, squirrel, and rabbit. Hunter's should not shoot near developed sites, dwellings, trails, or onto surrounding private property. You must have owner's permission to hunt on private property, which is intermingled with public lands on Cow Mountain. Rainbow trout are found in some of the small cold water streams, and several small reservoirs have been stocked with sunfish. The entire area is open to fishing. Please remember hunters and anglers are responsible for all personal licensing, tags, validations, and knowledge of the law for their sport. For zone and current season please contact California Department Fish and Wildlife or California Fish and Game Commission.

Hiking, Bicycling and Horseback Riding

Cow Mountain offers many back country recreational experiences. Trails provide recreationists with an intricate system of non-motorized adventure and existing roads are also available for hiking, mountain biking, and equestrian use. Please be sure to adhere to regulations for use on each trail and respect other users. Keep right! Use slow speeds and voice or bell indicators when approaching other users to pass.

Camping and Day Use

There are two campgrounds on North Cow Mountain; Mayacamas and Goat Rock. Mayacamas campground is accessible from Mendo Rock Road and contains 10 units for camping, toilets, picnic tables, fire pits, BBQs, and limited parking. Goat Rock Campground is only accessible via the Glen Eden Trail; it is a primitive

campground with 2 units, a horse trough and a fire pit. Both Willow Creek and Glen Eden are day use only sites including horse troughs and parking. Glen Eden also provides picnic tables, fire pits, and BBQs. **No target shooting is allowed at any of the above day use areas.** The Rifle Range, located just north of Willow Creek trailhead has been developed specifically for target shooting.

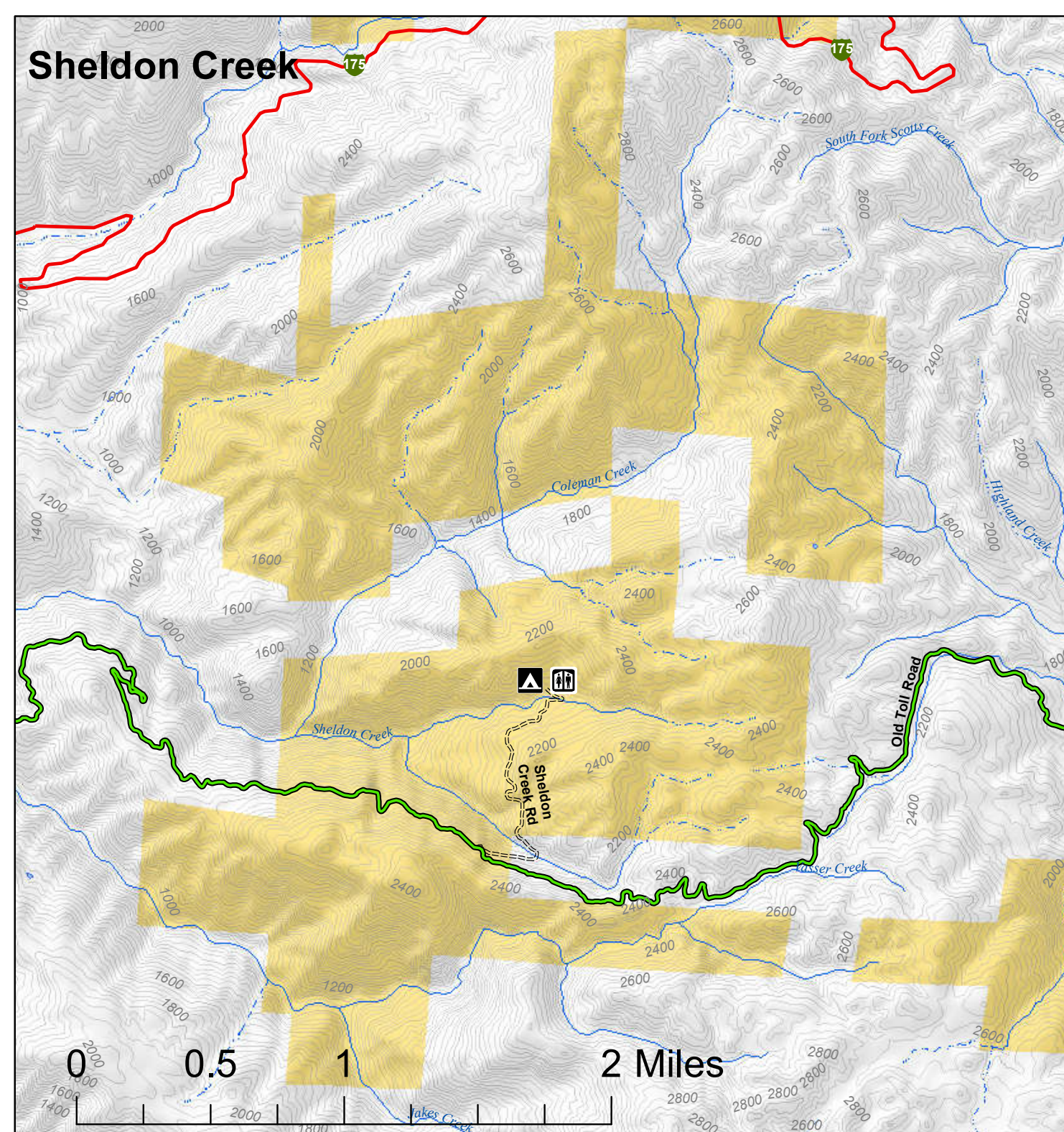
Shooting Regulations on North Cow Mountain:

- Shooting is allowed only at the Rifle Range
- It is unlawful to shoot within 150 yards of a developed site or dwelling, including campgrounds or day use areas, and from or across any road or trail
- PAPER TARGETS AND BIODEGRADABLE CLAY PIGEONS
- Shooting at glass objects is prohibited
- Carry out all targets and expended cartridges and/or shells
- All California Firearms regulations are enforced
- <http://oag.ca.gov/firearms>

Leave No Trace

- Plan Ahead and Prepare
- Travel and Camp on Durable Surfaces
- Dispose of Waste Properly
- Leave What You Find
- Minimize Campfire Impacts
- Respect Wildlife
- Be Considerate of Other Visitors

Please remember that we share our public lands with many other living creatures and beings! It is important to be respectful of our land so that those after us can enjoy it for many years to come.



Sheldon Creek

Sheldon Creek is an isolated, primitive recreation site located 8 miles east of Hopland, south of Highway 175. These 1700 acres of public land provide opportunities for camping, picnicking, hiking, hunting and equestrian use. Vehicle use is limited to the designated access road and OHVs are not permitted. The campground currently has three campsites and a vault toilet. There is no potable water at this site.

Access

From Hopland, take Hwy 175 east 3 miles. Turn right at the Old Toll Road (Younce Road) and drive 8 miles on a gravel road to the Sheldon Creek entrance.

From Lake County: From Hwy 29 take Highland Springs Road South (County Road 412) 9.8 miles to Adobe Creek Road. Turn left and continue south 0.6 miles to Younce Road. Bear right and continue east of Old Toll Road (Younce Road) 1.6 miles to Sheldon Creek.