






Sportsman's Guide to the Clearwater River

Legend

-  Boat Launch Ramp
-  RV Camping
-  Campground
-  Picnic Area
-  Restroom

Location

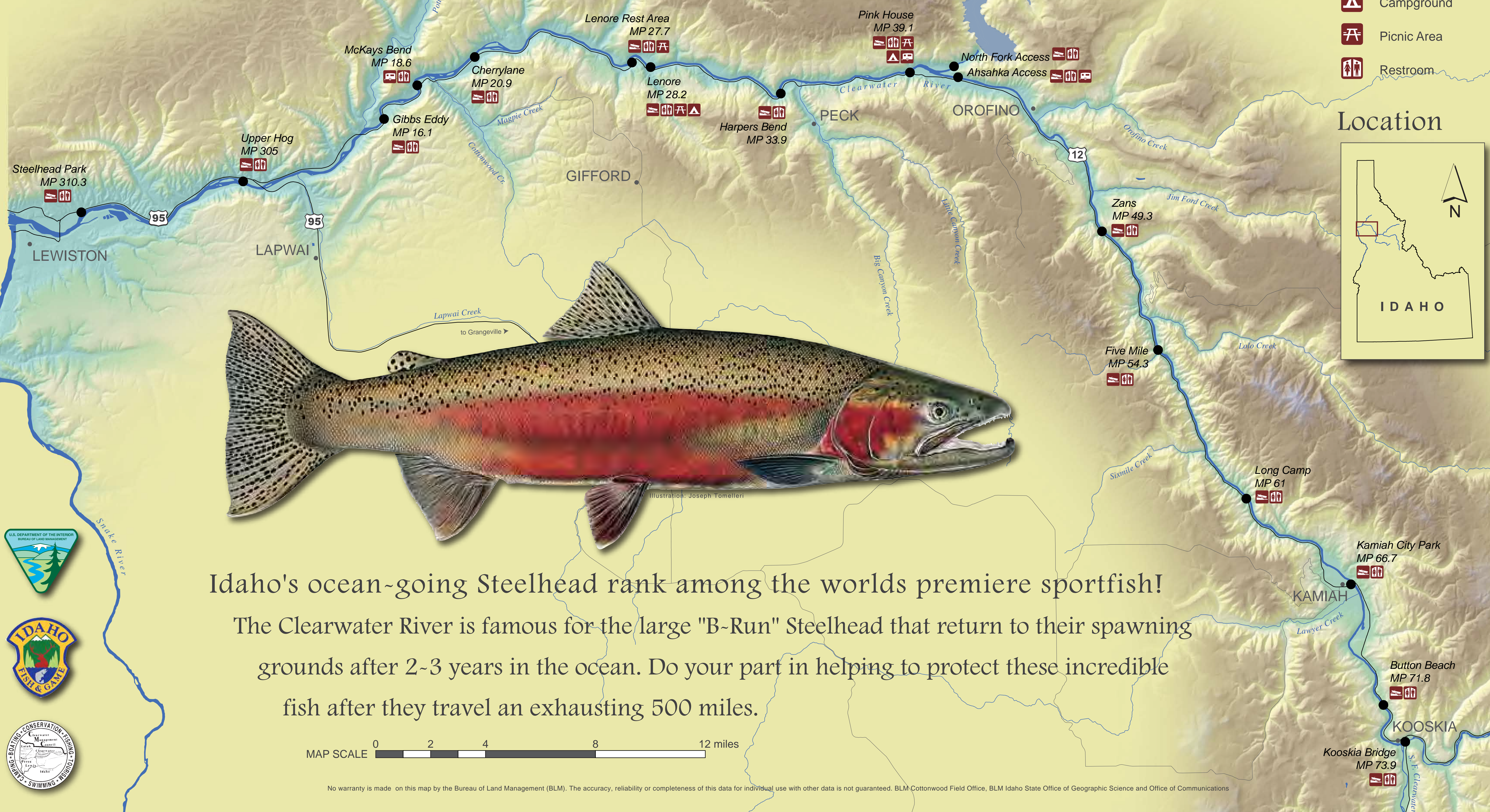
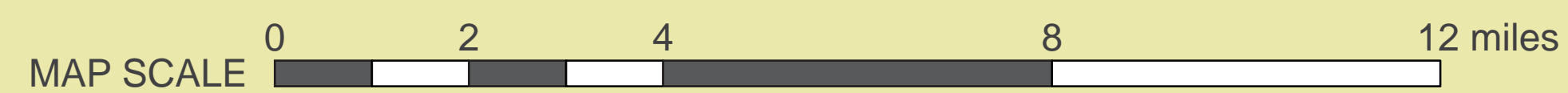


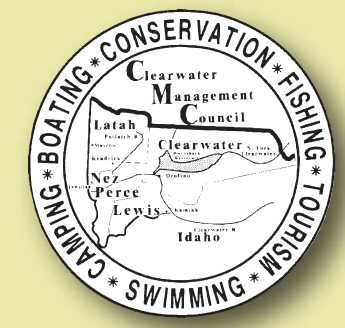
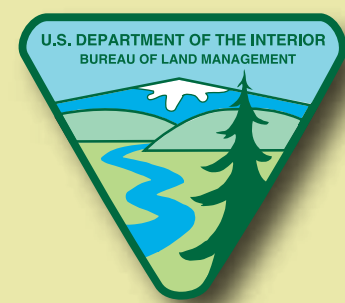
Illustration: Joseph Tomelleri

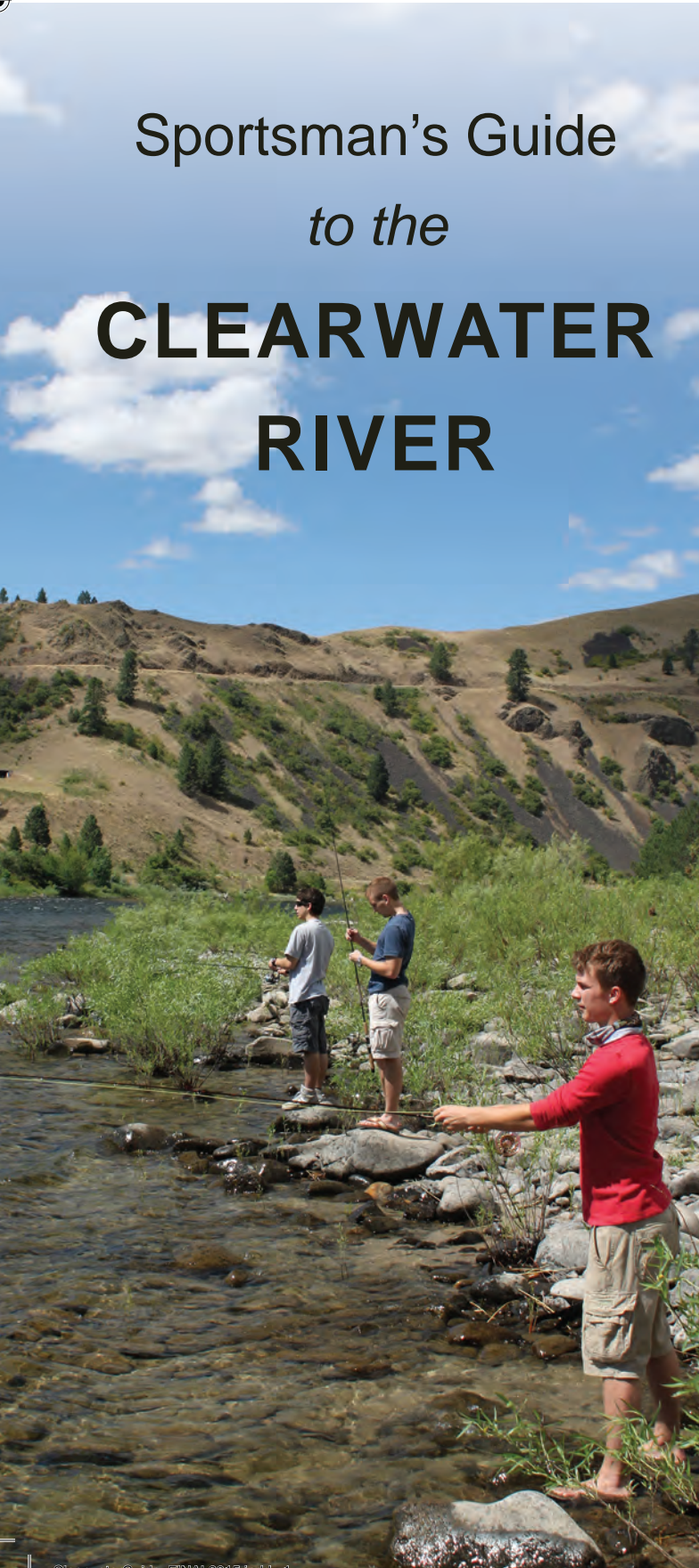
Idaho's ocean-going Steelhead rank among the worlds premiere sportfish!

The Clearwater River is famous for the large "B-Run" Steelhead that return to their spawning grounds after 2-3 years in the ocean. Do your part in helping to protect these incredible fish after they travel an exhausting 500 miles.

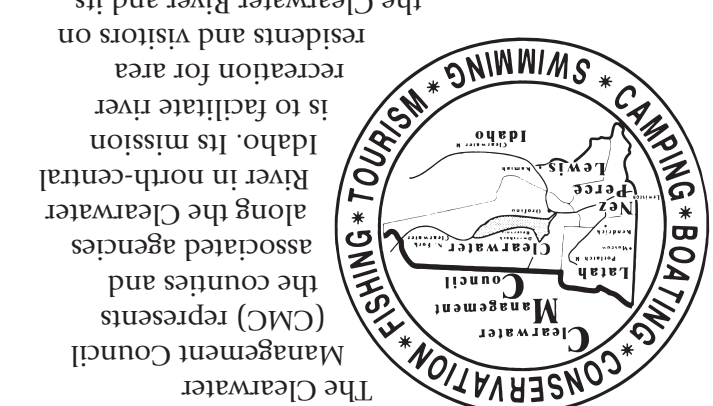


No warranty is made on this map by the Bureau of Land Management (BLM). The accuracy, reliability or completeness of this data for individual use with other data is not guaranteed. BLM Cottonwood Field Office, BLM Idaho State Office of Geographic Science and Office of Communications





Sportsman's Guide to the CLEARWATER RIVER

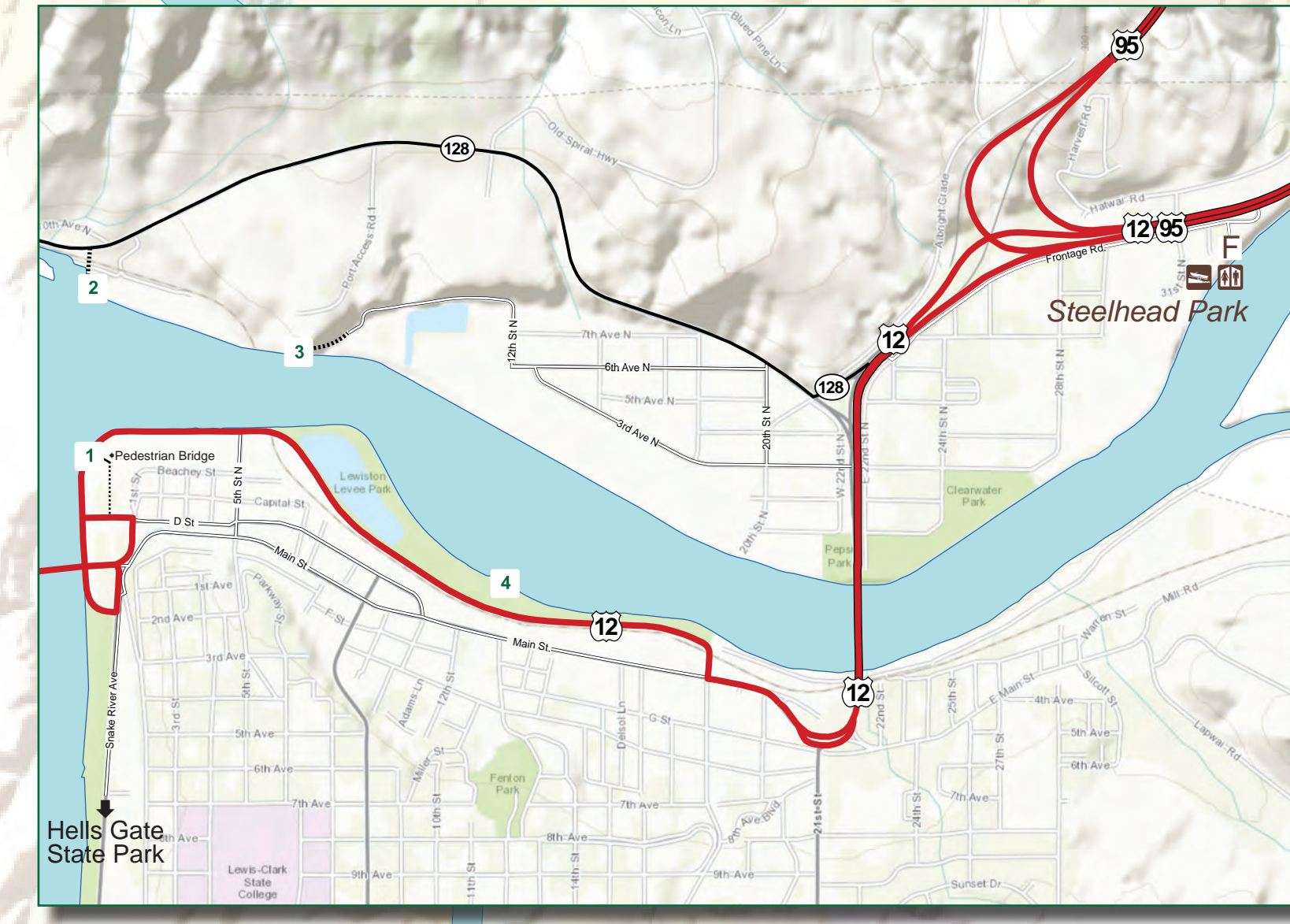
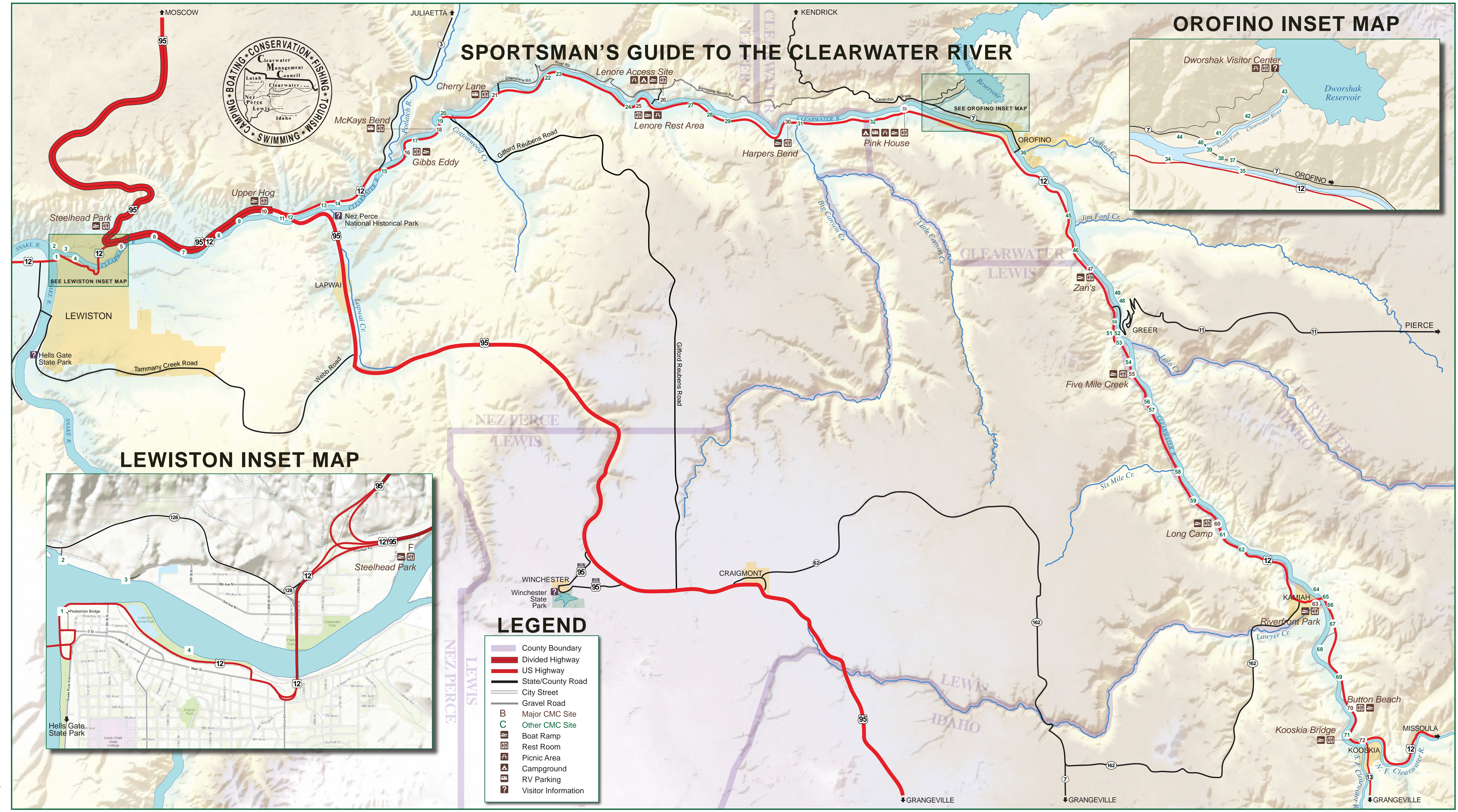


CMC Activities

- Removes over 1,100 pounds of litter from the access sites each month.
- Provides portable toilets, rest stops and solid waste removal along the Clearwater River.
- Installs boat ramps, parking areas, and facilities and acquires easements and rights-of-way to enhance public access.
- Promotes boating safety and the use of licensed Idaho river outfitters and fishing guides.
- Cooperatively monitors and manages the impacts of salmon and steelhead fishing.
- Develops opportunities to educate the public about the river, its fisheries, and history.

CMC County Governments
 Clearwater, Idaho, Latah, Lewis, and Nez Perce Counties
 Clearwater, Lewis, and Nez Perce Sheriff's Offices
 Clearwater and Latah Waterways Committees

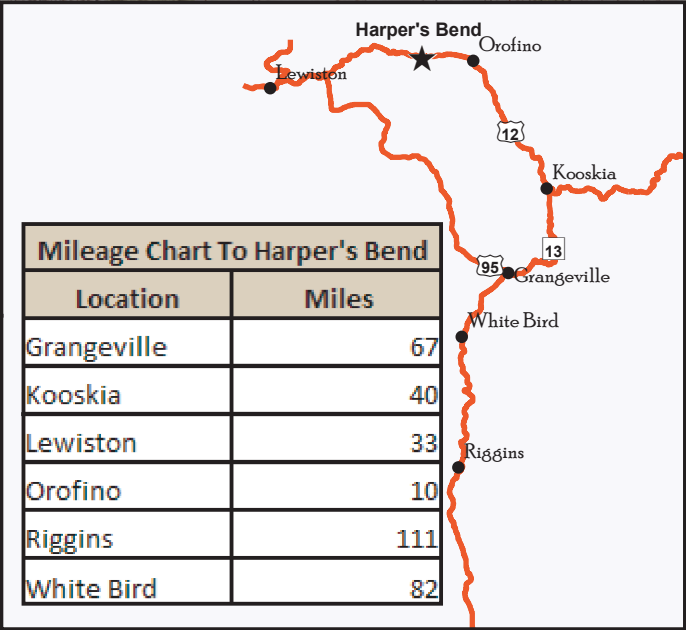
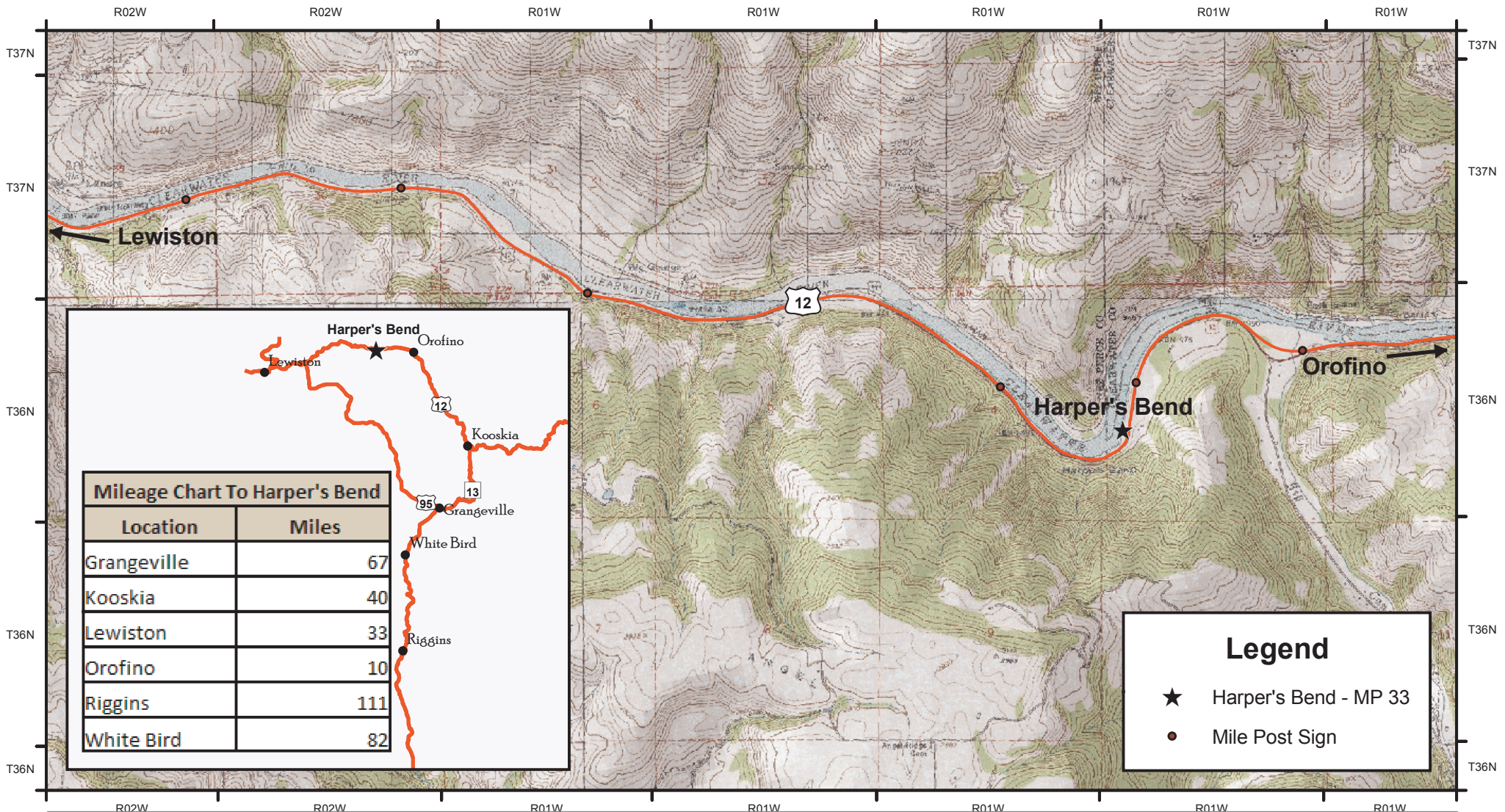
CMC State and Local Agencies
 Idaho Department of Fish and Game
 Idaho Outfitters and Guides Licensing Board
 Bureau of Land Management
 National Park Service
 U.S. Army Corps of Engineers
 U.S. Fish and Wildlife Service



LEGEND

- County Boundary
- Divided Highway
- US Highway
- State/County Road
- City Street
- Gravel Road
- Major CMC Site
- Other CMC Site
- Boat Ramp
- Rest Room
- Picnic Area
- Campground
- RV Parking
- Visitor Information

Harper's Bend Recreation Site



Legend

- ★ Harper's Bend - MP 33
- Mile Post Sign



Map Created: 2/14/2011

The surface management status ("land ownership") should be used as a general guide only. Official land records, located at the Bureau of Land Management (BLM) and other offices, should be checked for up-to-date information concerning any specific tract of land.

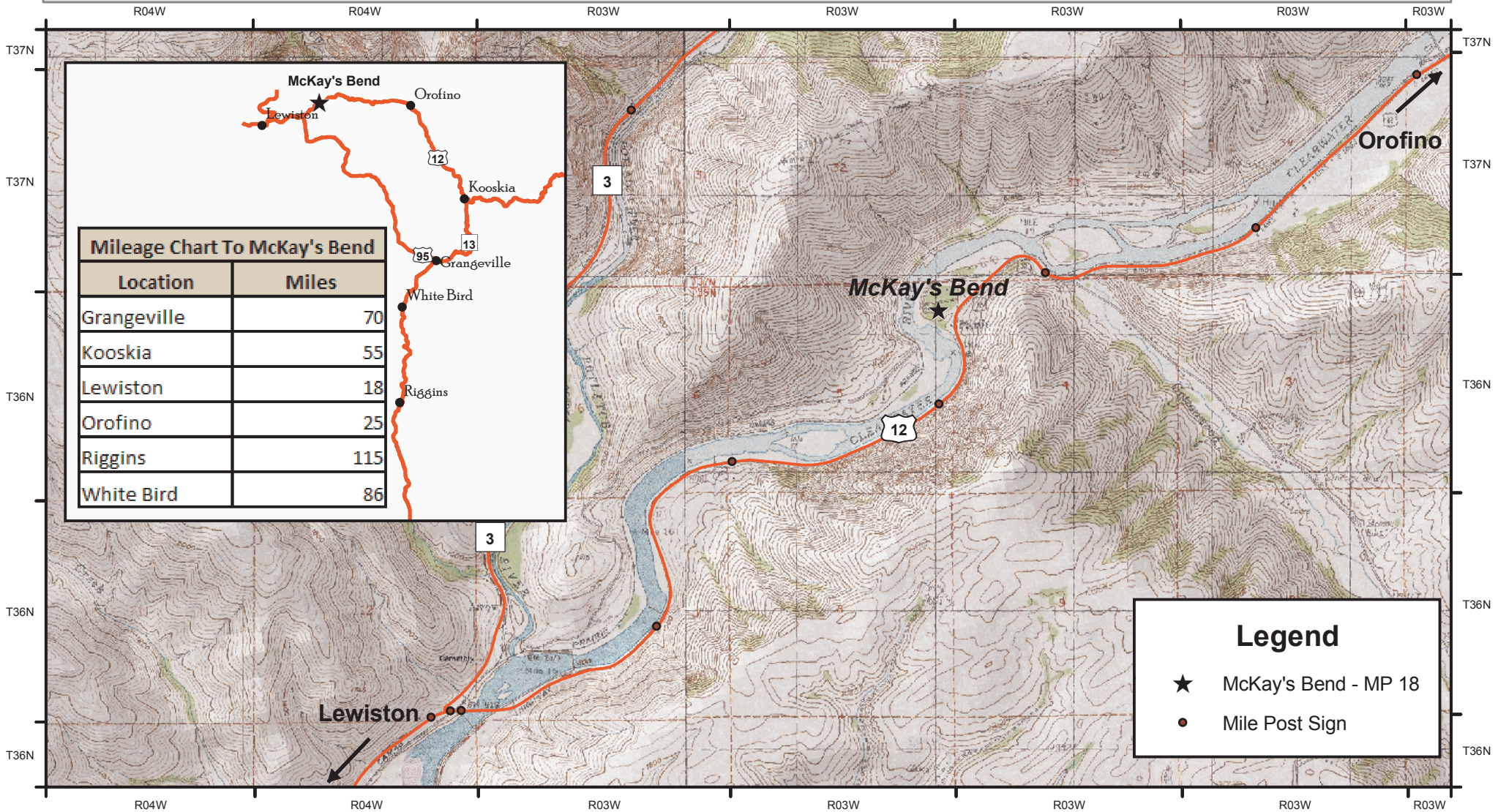
No warranty is made by the Bureau of Land Management. The accuracy, reliability, or completeness of these data for individual use or aggregate use with other data is not guaranteed. The following cannot be made Section 508 compliant. For help with its data or information, please contact the BLM Idaho State Office Webmaster at 208-373-4000.



Data displayed in UTM Zone 11N, NAD83



McKay's Bend Recreation Site

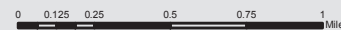


Map Created: 2/14/2011

The surface management status ("land ownership") should be used as a general guide only. Official land records, located at the Bureau of Land Management (BLM) and other offices, should be checked for up-to-date information concerning any specific tract of land.

No warranty is made by the Bureau of Land Management. The accuracy, reliability, or completeness of these data for individual use or aggregate use with other data is not guaranteed. The following cannot be made Section 508 compliant. For help with its data or information, please contact the BLM Idaho State Office Webmaster at 208-373-4000.

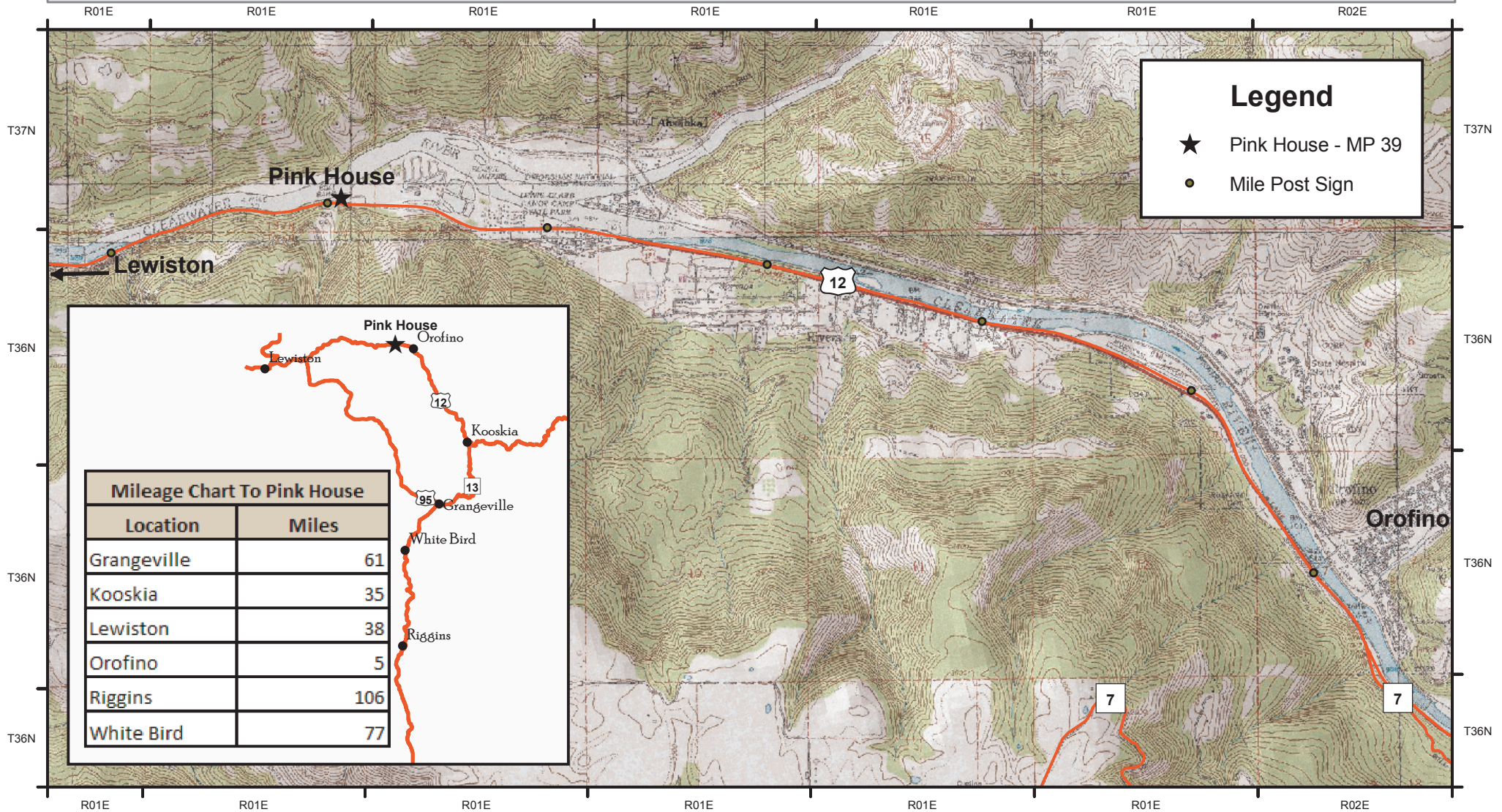
1:40,000



Data displayed in UTM Zone 11N, NAD83



Pink House Recreation Site



Map Created: 2/14/2011

The surface management status ("land ownership") should be used as a general guide only. Official land records, located at the Bureau of Land Management (BLM) and other offices, should be checked for up-to-date information concerning any specific tract of land.

No warranty is made by the Bureau of Land Management. The accuracy, reliability, or completeness of these data for individual use or aggregate use with other data is not guaranteed. The following cannot be made Section 508 compliant. For help with its data or information, please contact the BLM Idaho State Office Webmaster at 208-373-4000.



1:40,000
Data displayed in UTM Zone 11N, NAD83

