



U.S. DEPARTMENT OF THE INTERIOR  
**BUREAU OF LAND MANAGEMENT**  
McInnis Canyons National Conservation Area

**COLORADO**

**Devils, Flume, and Pollock Bench Trail System**



**REGULATIONS/RULES OF CONDUCT**

These regulations and rules of conduct are designed to protect fragile resources and to provide for your safety and enjoyment.

- The Devils/Pollock Bench trail system as shown on the map is open to hiking and horseback riding. Wheel chairs are allowed.
- Avoid cross-country travel. Stay on signed trails.
- On narrow trails, hike or horseback single file.
- McInnis Canyons National Conservation Area is closed to recreational target shooting for the safety of all visitors. Hunting is allowed.
- Help keep the area clean - remove all garbage, including organic waste, such as banana peels, and dog waste.
- Camping on this trail system is allowed only inside the Black Ridge Canyons Wilderness Area and is limited to 14 days.
- Use fire carefully in wilderness. Stoves are recommended. If you must have a fire in the wilderness, keep it small and use only dead and down wood. Build a minimum impact fire.
- Equestrian use is not allowed on the Skinner trail and Paleo Interpretive trail in the Fruita Paleontological Area.
- Travel and Camp on Durable Surfaces.
- Dispose of human waste properly.



**Pet Owners:**

Be considerate of other hikers and riders. Keep your pet on a leash when approaching other users and help keep trails clean.

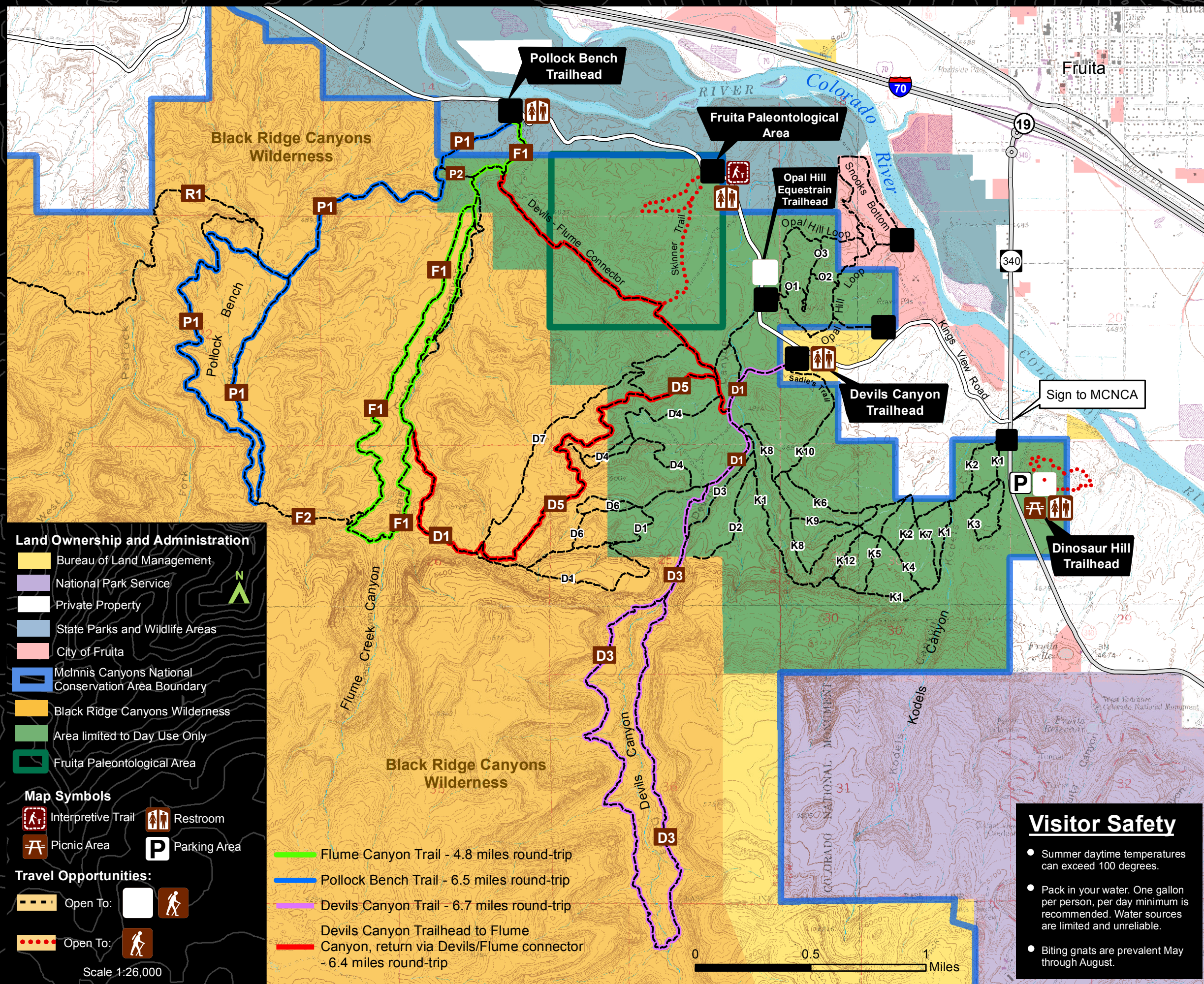
Remember that hiking in canyon country with pets will increase stress on wildlife. Spring is lambing season for bighorn sheep. Please keep your pet under your control at all times.

**Please stay on Signed Routes**

Non-system routes are being rehabilitated to provide a better trail experience and to minimize disturbance to the fragile desert landscape. Please help us with this effort by staying on the signed trail system.

No warranty is made by the Bureau of Land Management as to the accuracy, reliability, or completeness of these data for individual use or aggregate use with other data, or for the purposes not intended by the BLM. Spatial information may not meet National Map Accuracy Standards. This information may be updated without notification.

Map produced by the BLM Grand Junction Field Office 06/2018



**Visitor Safety**

- Summer daytime temperatures can exceed 100 degrees.
- Pack in your water. One gallon per person, per day minimum is recommended. Water sources are limited and unreliable.
- Biting gnats are prevalent May through August.