

Dominguez-Escalante National Conservation Area

The Dominguez-Escalante National Conservation Area (NCA) comprises 210,172 acres of protected public lands, and includes the 66,280-acre Dominguez Canyon Wilderness. The NCA was created by the 2009 Omnibus Public Lands Management Act and is managed as part of the Bureau of Land Management's National Conservation Lands.

The Dominguez-Escalante NCA travel map shows the network of designated routes for access to lands throughout the NCA and the type of use for each route; from trails managed for foot and horseback, bicycle, motorcycle or ATV, to routes for full-sized vehicles. All motorized and bicycle travel is limited to designated routes. Travel within the Dominguez Canyon Wilderness is limited to foot and horseback.

The NCA has several recreation management areas, each with an emphasis on different types of recreational experiences. The Cactus Park Special Recreation Management Area is managed to provide opportunities for motorized travel with an emphasis on ATV trails. The Ninemile Hill Extensive Recreation Management Area (ERMA) has an emphasis on quiet use; travel is predominantly limited to foot and horse. The Hunting Grounds ERMA is managed for a mixture of motorized and mechanized travel, and the Escalante Triangle within the Sawmill Mesa/Wagon Park ERMA has an emphasis on bicycle use. There are several developed campgrounds and opportunities for dispersed camping within the NCA.

For More Information:
Grand Junction Field Office
Phone: (970) 244-3000

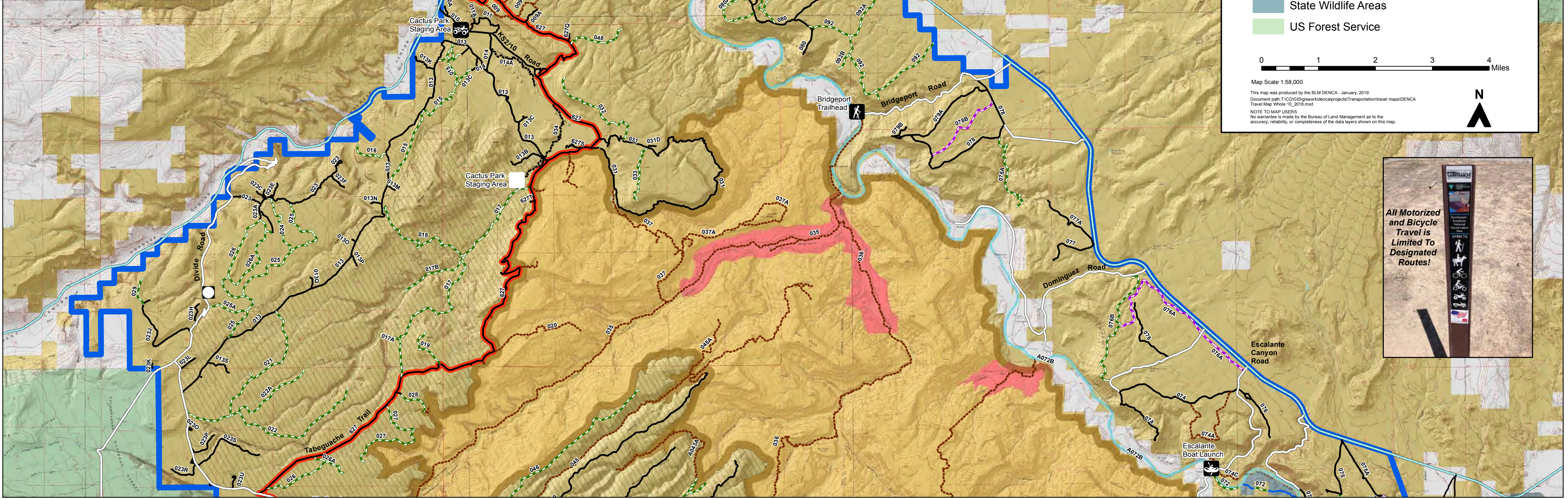
Uncompahgre Field Office (Montrose)
Phone: (970) 240-5300

Link to Geo-Referenced Map
<https://www.avenzamaps.com/maps/727494/dominguez-escalante-national-conservation-area-travel-map>

Cover photo: BLM Photo by Bob Wick
BLM/CO/MA-19/002



Travel Map | Colorado



- Route Designations**
- Foot and Horse
 - Bicycle
 - Motorcycle
 - ATV (50 inches or less)
 - Full Size Vehicles
 - County Maintained Roads - Not Subject to BLM Seasonal Closures
 - Tabeguache Trail
- Open To:**
- Horse
 - Bicycle
 - Motorcycle
 - ATV
 - Full Size Vehicles
 - Horse and Rider
 - Horse and Rider with Pack
 - Horse and Rider with Pack and Pack
 - Horse and Rider with Pack and Pack and Pack
- Areas Limited to Day Use Only - Horse Travel Limited to Existing Routes
 - Areas Closed to Bicycles and Motorized Travel from December 1 through April 30.
- Land Ownership and Administration**
- D-E NCA Boundary
 - Wilderness
 - Bureau of Land Management
 - Private
 - State Wildlife Areas
 - US Forest Service

0 1 2 3 4 Miles
Map Scale 1:58,000
This map was produced by the BLM DENCA - January, 2019
Document path: T:\COGIS\sw\denca\projects\transportation\travel maps\DENCA Travel Map Whole 10_2018.mxd
NOTE TO MAP USERS
No warranty is made by the Bureau of Land Management as to the accuracy, reliability, or completeness of the data layers shown on this map.



All Motorized and Bicycle Travel is Limited To Designated Routes!

Dominguez Canyon Wilderness

Uncompahgre National Forest



Route Designations

- Foot and Horse
- Bicycle
- Motorcycle
- ATV (50 inches or less)
- Full Size Vehicles
- County Maintained Roads - Not Subject to BLM Seasonal Closures
- Tabeguache Trail
- Areas Limited to Day Use Only - Horse Travel Limited to Existing Routes
- Areas Closed to Bicycles and Motorized Travel from December 1 through April 30.

Open To:

- Foot and Horse
- Bicycle
- Motorcycle
- ATV (50 inches or less)
- Full Size Vehicles

Land Ownership and Administration

- D-E NCA Boundary
- Wilderness
- Bureau of Land Management
- Private
- State Wildlife Areas
- US Forest Service

Map Scale 1:58,000

This map was produced by the BLM DENCA - January, 2019
 Document path: T:\2019\GIS\denca\projects\Transportation\travel\maps\DENCA Travel Map Whole 10_2018.mxd

NOTE TO MAP USERS
 No warranty is made by the Bureau of Land Management as to the accuracy, reliability, or completeness of the data layers shown on this map.

Non-BLM Routes

- State Wildlife Area Motorized Routes
- State Wildlife Area Non-Motorized Routes
- Forest Service Non-Motorized Routes
- Forest Service Motorized Routes

