

**United States Department of the Interior
Bureau of Land Management**

**Vernal Field Office
Special Recreation Permit (SRP)
Business Plan**



**United States Department of the Interior
Bureau of Land Management, Utah
Green River District- Vernal Field Office
May 2014**



Business Plan for the Vernal Field Office's Special Recreation Permit Program

Recommendations, Reviews, and Approvals

Recommended by:



Outdoor Recreation Planner

5/21/2014

Date

Reviewed by:



Assistant Field Office Manager – Renewable Resources

5/27/14

Date

Approved by:



a copy Field Office Manager

5-27-2014

Date

This business plan was prepared pursuant to the Federal Lands Recreation Enhancement Act (Public Law 108-447) and Bureau of Land Management (BLM) recreation Fee program policy. It establishes future management goals and priorities for the Vernal Field Office's special recreation permit (SRP) program.

Table of Contents

| | | |
|------|---|----|
| I. | Introduction to the Field Office Recreation Fee Program..... | 4 |
| | A. Background and Authorities..... | 4 |
| | B. Administrative Unit..... | 5 |
| | C. Description of Vernal Field Office’s Recreation Program..... | 6 |
| | D. Field Office Visitation..... | 7 |
| | E. Anticipated Use..... | 12 |
| | F. Visitation Trends..... | 13 |
| | G. Visitor Demographics..... | 14 |
| | H. Applicable Resource Management Plans..... | 17 |
| | I. Number and Type of Permits Issued in FY13..... | 18 |
| | J. Partnerships..... | 19 |
| II. | Description of Permitting Program | 20 |
| | A. Permitted Activities..... | 21 |
| | B. Permits Issued in past 5 years..... | 22 |
| | C. Visitor Use Numbers..... | 22 |
| | D. Visitor Demographics | 22 |
| III. | Revenues | 22 |
| | A. Actual Revenues from past 5 years..... | 23 |
| | B. Projected Annual revenues..... | 24 |
| IV. | Expenditures | 24 |
| | A. Expenditures from past year..... | 24 |
| | B. Additional Permitting Costs | 25 |
| | C. Deferred Maintenance projects..... | 26 |
| V. | Priorities for Future Expenditures..... | 26 |
| | A. Priority Expenditures | 26 |
| | B. Cost Estimates..... | 30 |
| | C. Revenue needed in Savings..... | 31 |
| | D. Annual, Short-term and Long term Expenditures..... | 31 |
| | E. Level of Appropriated Funding towards Expenditures..... | 31 |
| | References..... | 32 |

**Vernal Field Office
Special Recreation Permit (SRP)
Business Plan**

I. Introduction to the Field Office Recreation Fee Program

A. Background and Authorities

This business plan has been prepared to meet the criteria defined in the “Federal Lands Recreation Enhancement Act 2004” (P.L.108-447). The authorities and regulations for this business plan, including fee collection for campgrounds, are:

- The Federal Land Policy and Management Act (FLPMA), 1976, [Public Law 94-579], contains BLM’s general land use management authority over the public lands, and establishes outdoor recreation as one of the principal uses of those lands. Section 302 (b) of FLPMA directs the Secretary of the Interior to regulate through permits or other instruments the use of the public lands. Section 303 of FLPMA contains BLM’s authority to enforce the regulations and impose penalties.
- The Federal Lands Recreation Enhancement Act (FLREA), 2004, repealed applicable portions of the Land and Water Conservation Fund Act and replaced BLM’s authority to collect recreation fees in 2004. This current law authorizes BLM to issue special recreation permits (SRP) and charge a SRP fee in connection with the permit issuance, allows BLM to keep the fee revenues at the local offices where they were collected, and directs how BLM will manage and utilize these revenues.
- Code of Federal Regulations, Title 43, Part 2930 (43 CFR 2930), contains the regulations governing BLM’s recreation permitting programs. 43 CFR, Subpart 2932.11(b) contains BLM’s authority to issue permits. It states that, “If BLM determines that it is necessary, based on planning decisions, resource concerns, potential user conflicts, or public health and safety, we may require you to obtain a Special Recreation Permit for – (2) Noncommercial, noncompetitive, organized group activities or events; or (3) Academic, educational, scientific, or research uses that involve: (i) Means of access or activities normally associated with recreation.”

This business plan has also been prepared pursuant to all applicable BLM recreation fee program policies and guidance, including:

- BLM Recreation Permit Administration Handbook (H-2930-1)
- BLM Instruction Memorandum 2007-028: *Federal Lands Recreation Enhancement Act – Final Public Participation Policy for Certain Recreation Fee Adjustments and Proposed New Fee Sites/Areas*

- BLM Utah Instruction Memorandum UT 2013-037: *Utah Recreation Fee Program Toolbox*

The BLM strives to manage recreation and visitor services to serve the diverse visitor outdoor recreation demands while helping them to maintain sustainable setting conditions needed to conserve public lands so the visitor’s desired recreation choices remain available. The BLM’s goals for delivering recreation benefits from BLM-administered lands to the American people and their communities are:

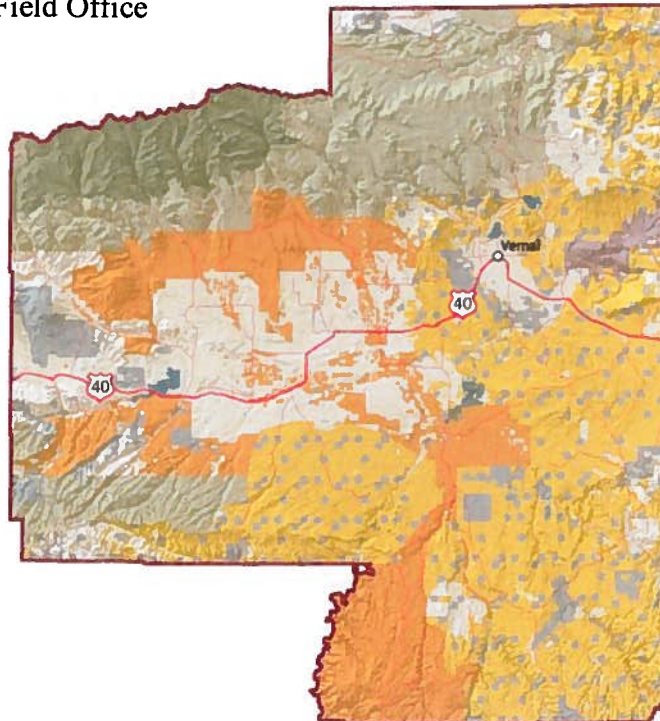
- Improve access to appropriate recreation opportunities;
- Ensure a quality experience and enjoyment of natural and cultural resources; and
- Provide for and receive fair value in recreation.

This business plan will assist the Vernal Field Office (VFO) in meeting these visitor service goals. This plan covers all authorized SRP holders operating on BLM managed lands and future facility development funding through revenue collected from these SRP holders.

B. Administrative Unit

The VFO is a component of the Green River District, and is the administrative unit responsible for the management of the BLM administered lands along both the Green and White rivers in northeastern Utah. There are over 5.5 million acres within the boundary of the VFO, of which 1.7 million acres (approximately 31 percent) are BLM-managed surface lands. The VFO also administers energy related mineral activities on 3.9 million acres of federal mineral lands (including 1.3 million acres of U.S. Forest Service lands) and post-lease mineral operation on Indian Trust mineral lands. The boundary of the VFO includes portions of Uintah, Daggett and Duchesne Counties. The entire field office is located within Utah’s 1st congressional district.

Map 1 - Vernal Field Office



C. Vernal Field Office Recreation Program

The VFO offers a great variety of recreational opportunities including backpacking, boating (canoeing, kayaking, and rafting), camping, dirt biking, enjoying natural and cultural features, fishing, four wheel driving, hiking, horseback riding, hang gliding, hunting, mountain biking, OHVing, rock climbing and scenic driving, among others. The BLM manages recreational use of public lands through three different basic units of recreation management: the Special Recreation Management Area (SRMA), the Extensive Recreation Management Area (ERMA), and public lands not designated as recreation management areas (IM No. 2011-004). An SRMA is an area where recreation is emphasized. SRMAs are defined as areas that require a recreation investment, where more intensive recreation management is needed and where recreation is a principal management objective. The VFO manages seven such SRMAs including:

- Blue Mountain SRMA (42,729 acres) managed for OHV use, special recreational activities (e.g., hang-gliding, rock climbing), and competitive events.
- Browns Park (including the Upper Green River Corridor) SRMA (18,490 acres) offering a wide variety of land and water opportunities including the recreational activities on Upper Green River Corridor.
- Fantasy Canyon SRMA (69 acres) offering opportunities for self-guided touring and hiking.
- Nine Mile Canyon SRMA (44,168 acres) managed to protect its high-value cultural and scenic qualities.
- Pelican Lake SRMA (1,014 acres) offering water based recreational opportunities. Portions of the Pelican Lake SRMA overlap BOR withdrawn lands requiring further interagency coordination on all new recreation proposals occurring within this overlapping boundary.
- Red Mountain-Dry Fork SRMA (24,285 acres) providing opportunities of OHV and non-motorized trail activities.
- White River SRMA (2,831 acres) offering water based recreational opportunities.

An ERMA is an area that requires specific management consideration in order to address recreation use, demand or program investments. Within an ERMA, recreation is generally unstructured and dispersed, requires minimal recreation-related investments, and has minimal regulatory constraints. Detailed planning is not usually required for these areas. The VFO has approximately 1,566,414 acres that would be considered part of the ERMA.

Other major outdoor recreation attractions located within the VFO boundary but managed by other agencies or private land owners include:

- Ashley National Forest (USFS)
- High Uinta's Wilderness Area (USFS)
- Flaming Gorge National Recreation Area (USFS)
- Red Fleet, Starvation and Steinaker State Parks (UT-DNR)
- Dinosaur National Monument (NPS)
- Jones Hole National Fish Hatchery (FWS)
- Browns Park National Wildlife Refuge (FWS)

- Ouray National Wildlife Refuge (FWS)
- Utah Field House of Natural History State Park Museum (UT-DNR)
- Dry Fork Canyon Petroglyphs (Private)

D. Vernal Field Office Recreational Visitation

The BLM maintains visitor use data in the Recreation Management Information System (RMIS) system. According to the most recent RMIS data, recreational visitation to BLM lands managed by the VFO is moderate for the state of Utah, totaling over 429,000 visits during fiscal year (FY) 2013. Historically, visits recorded in RMIS have been recorded through a variety of methods including: general estimation, BLM traffic counters (Traffix), county traffic counters, and DOT traffic counters. In 2013, the VFO recreation staff installed traffic counters at all of the developed recreation sites on the urban interface. The traffic counters were located at the primary entrances into the recreation sites or at other location that minimize other non-recreational traffic. Visitation levels and primary activities are correlated with the recreation sites existing within the SRMAs and ERMA in the following tables:

Table 2 - Blue Mountain SRMA recreation sites and visitation

| Blue Mountain SRMA | | | |
|--------------------------------|--------------------------|----------------|---------------------|
| Site Name | Primary Site Type | Visits | Visitor Days |
| Cliff Ridge Hang Glide Site | Specialized Sport Site | 13 | 17 |
| Dispersed-Blue MT | Dispersed Use | 808 | 67 |
| Hang Gliding Launch Campsite | Campground | 22 | 73 |
| Hang Gliding Mahogany Campsite | Campground | 12 | 40 |
| Musket Shot Spring Overlook | Other | 169,160 | 4,314 |
| Point of Pines Campsite | Campground | 232 | 302 |
| Total | | 170,247 | 4,813 |

Table 3 - Browns Park (Upper Green River) SRMA recreation sites and visitation

| Browns Park SRMA | | | |
|-------------------------|--------------------------|---------------|---------------------|
| Site Name | Primary Site Type | Visits | Visitor Days |
| Airstrip | Campground | 182 | 140 |
| Backwater Camp | Campground | 0 | 0 |
| Beaver Dam | Campground | 198 | 115 |
| Big Pine I | Campground | 1,071 | 366 |
| Big Pine II | Campground | 1,132 | 377 |
| Big Tree | Campground | 481 | 160 |
| Bootleg Camp | Campground | 259 | 86 |

| | | | |
|---------------------------|----------------|---------|--------|
| Bridge Hollow Boat Ramp | Other | 0 | 0 |
| Bridge Hollow | Campground | 7,569 | 2,523 |
| Bridge Port | Other | 217 | 72 |
| Burned Tree Camp | Campground | 135 | 45 |
| Cats Paw | Campground | 405 | 135 |
| Cicada | Campground | 127 | 42 |
| Cottonwood Camp | Campground | 1,036 | 345 |
| Dispersed-Browns Park | Dispersed Use | 114,978 | 38,326 |
| Elm Grove Camp | Campground | 124 | 41 |
| Fire Flat | Campground | 0 | 0 |
| Grasshopper I | Campground | 475 | 158 |
| Grasshopper II | Campground | 526 | 175 |
| Green River Trail Head | Trailhead | 546 | 182 |
| Indian Crossing | Campground | 4,957 | 1,652 |
| Indian Crossing | Boat Launch | 0 | 0 |
| Island View | Campground | 99 | 33 |
| Jackson Creek | Campground | 505 | 168 |
| John Jarvie Historic Site | Visitor Center | 4,981 | 971 |
| Kings Point Trail Head | Trailhead | 60 | 15 |
| Little Swallow Canyon | Campground | 216 | 72 |
| Lone Tree | Campground | 240 | 80 |
| Long Bend | Campground | 120 | 40 |
| Outlaw Trail-Green River | Trailhead | 157 | 46 |
| Pipeline Camp | Campground | 142 | 47 |
| Pugmire Pocket | Campground | 240 | 80 |
| Red Creek Rapid | Campground | 661 | 220 |
| River Bend | Campground | 162 | 54 |
| River Side | Campground | 362 | 121 |
| Roadside | Campground | 364 | 121 |
| Rye Grass | Campground | 183 | 61 |
| Sand Camp | Campground | 126 | 42 |
| Stonefly I | Campground | 56 | 19 |
| Stonefly II | Campground | 67 | 22 |
| Swallow Canyon | Boat Launch | 0 | 0 |
| Swallow Canyon | Campground | 2,339 | 780 |

| | | | |
|----------------------|------------|----------------|---------------|
| Swinging Bridge Camp | Campground | 88 | 29 |
| Trails End Camp | Campground | 745 | 248 |
| Tree Tops | Campground | 295 | 98 |
| Total | | 146,626 | 48,307 |

Table 4 - Fantasy Canyon SRMA recreation sites and visitation

| Fantasy Canyon SRMA | | | |
|-------------------------------|-------------------|--------------|--------------|
| Site Name | Primary Site Type | Visits | Visitor Days |
| Dispersed-Fantasy Canyon | Dispersed Use | 0 | 0 |
| Fantasy Canyon/ Geologic Site | Other | 4,124 | 344 |
| Total | | 4,124 | 344 |

Table 5 - Nine Mile Canyon SRMA recreation sites and visitation

| Nine Mile SRMA | | | |
|---------------------|-------------------|---------------|--------------|
| Site Name | Primary Site Type | Visits | Visitor Days |
| Dispersed-Nine Mile | Dispersed Use | 10,200 | 3,154 |
| Total | | 10,200 | 3,154 |

Table 6 - Pelican Lake SRMA recreation sites and visitation

| Pelican Lake SRMA | | | |
|------------------------|-------------------|--------------|--------------|
| Site Name | Primary Site Type | Visits | Visitor Days |
| Dispersed-Pelican Lake | Dispersed Use | 5,670 | 3,856 |
| Pelican Lake Rec Site | Campground | 0 | 0 |
| Total | | 5,670 | 3,856 |

Table 7 - Red Mountain-Dry Fork SRMA recreation sites and visitation

| Red Mountain-Dry Fork SRMA | | | |
|----------------------------------|-------------------|--------|--------------|
| Site Name | Primary Site Type | Visits | Visitor Days |
| Dinosaur Trackway Trailhead | Staging Area | 3,420 | 855 |
| Dispersed-Red Mountain- Dry Fork | Dispersed Use | 3,600 | 720 |
| Drive Thru Ages Geologic Tour | Other | 2,497 | 218 |
| Dry Fork #1 | Picnic Area | 332 | 53 |

| | | | |
|-----------------------------|--------------------|---------------|--------------|
| Dry Fork #2 | Picnic Area | 283 | 211 |
| Dry Fork #3 | Picnic Area | 254 | 189 |
| Dry Fork #4 | Picnic Area | 264 | 197 |
| Dry Fork Interpretive Trail | Trailhead | 2,484 | 414 |
| Moonshine Arch | Intensive Use Area | 2,354 | 275 |
| Moonshine Arch Trail | Trailhead | 2,400 | 200 |
| Red Mountain Trail Head | Trailhead | 2,760 | 858 |
| Rojo | Trailhead | 607 | 202 |
| Total | | 21,255 | 4,392 |

Table 8 - White River SRMA recreation sites and visitation

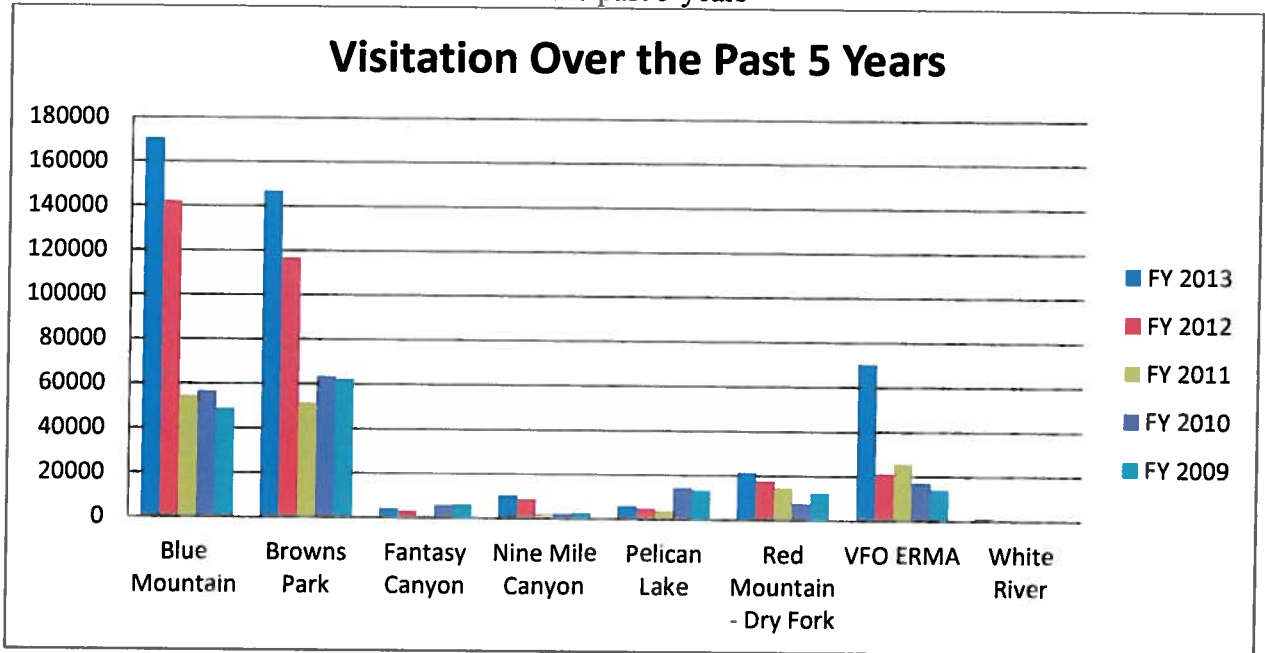
| White River SRMA | | | |
|-----------------------|-------------------|------------|--------------|
| Site Name | Primary Site Type | Visits | Visitor Days |
| Dispersed-White River | Dispersed Use | 738 | 532 |
| Enron Take-Out South | Campground | 43 | 57 |
| Enron Take-Out Middle | Campground | 74 | 99 |
| Enron Take-Out North | Campground | 48 | 64 |
| Total | | 903 | 752 |

Table 9 - Vernal Field Office ERMA recreation sites and visitation

| Vernal Field Office Extensive Recreation Area (ERMA) | | | |
|--|-------------------|--------|--------------|
| Site Name | Primary Site Type | Visits | Visitor Days |
| Atchee Ridge Campsite | Campground | 63 | 63 |
| Augusi Campsite | Campground | 70 | 93 |
| Bear Hunters Camp Divide East | Campground | 67 | 135 |
| Bear Hunters Camp West | Campground | 38 | 51 |
| Book Cliffs Divide | Campground | 0 | 0 |
| Dispersed-Book Cliffs | Dispersed Use | 62,581 | 68,891 |
| Dispersed-Book Cliffs | Dispersed Use | 0 | 0 |
| Dispersed-Diamond Mountain | Dispersed Use | 4,624 | 2,297 |
| Gate Canyon Trail | Trailhead | 0 | 0 |
| Grand Valley Overlook | Campground | 0 | 0 |
| Hide Out Campsite | Campground | 58 | 77 |
| Lower McCook Hunter | Campground | 50 | 50 |

| | | | |
|---------------------------|------------|---------------|---------------|
| Lower Willow Campsite | Campground | 50 | 67 |
| Massey Junction East | Campground | 64 | 85 |
| Massey Junction West | Campground | 72 | 96 |
| McCoy Flats | Trailhead | 0 | 0 |
| Meadow Ridge Campsite | Campground | 0 | 0 |
| Outlaw Trail-Sears Cnyn | Trailhead | 0 | 0 |
| P R Springs | Campground | 236 | 293 |
| Pariette Wetlands | Other | 662 | 132 |
| Peregrine Campsite | Campground | 331 | 441 |
| Reservoir Campsite | Campground | 62 | 83 |
| Seep Ridge Campsite | Campground | 49 | 65 |
| So. Cy. Camp - Upper | Campground | 416 | 366 |
| So. Cy.-Lower | Campground | 142 | 125 |
| So.Cy.Camp-Middle | Campground | 151 | 133 |
| South Canyon Aspen Groves | Campground | 142 | 125 |
| Survival Campsite | Campground | 0 | 0 |
| Three Mile Canyon | Campground | 86 | 115 |
| Upper Willow Campsite | Campground | 38 | 51 |
| Total | | 70,052 | 73,834 |

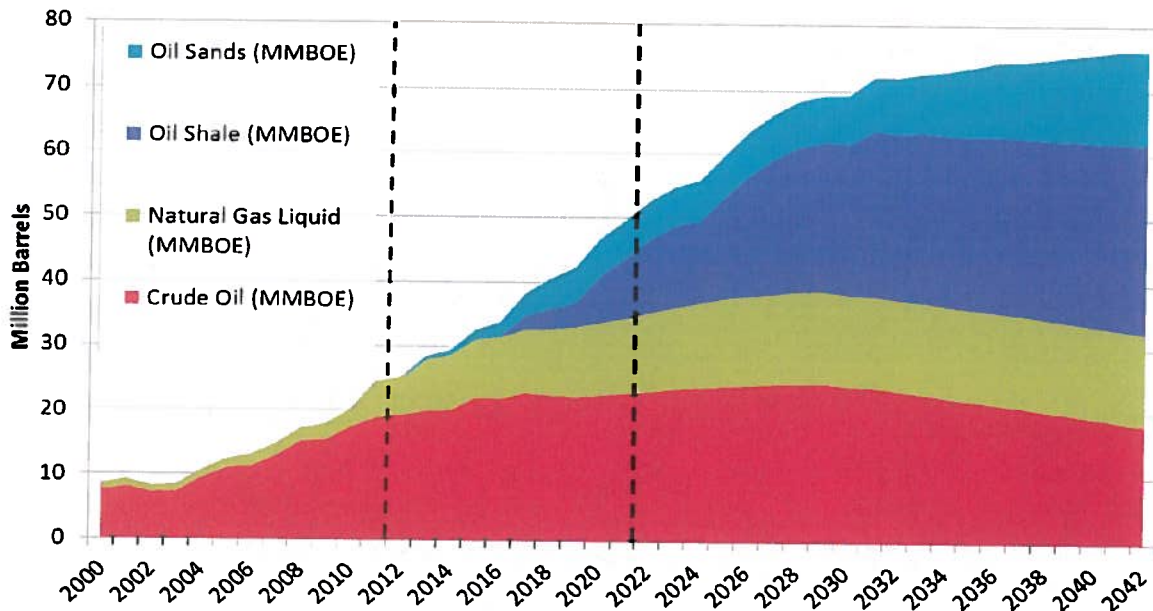
Table 10 - VFO recreation visitation over the past 5 years



E. Anticipated Future Use Levels

In a recent study (02/08/13) conducted by the Utah Department of Transportation, it is estimated that the Oil and Gas industry in the Uinta Basin could double by the year 2022. The oil and gas industry is directly responsible for nearly 50% of all employment within the boundary of the VFO.

Table 11 - Forecast of Oil and Gas Production in the Uintah Basin



The increase in oil sands and shale production could result in the creation of over 26,800 jobs - accounting for about a 2.5% increase in the total jobs in the State of Utah. As a result, we can expect an increased demand on the BLM recreation facilities as the population of the Uintah Basin increases.

F. Identified Visitation Trends

The Blue Mountain SRMA receives the highest level of visitation within the field office primarily because of a BLM recreation site called Musket Shot Springs. Musket Shot Springs is a historic site identified in the diary of Father Escalante in 1776. Dominguez and Escalante led a party of ten men through western Colorado and eastern Utah looking for a new route to the Spanish missions in California. This site not only serves to commemorate their journey, it also serves as the only highway rest area on Highway 40 between Vernal and the Colorado Border. Visitation numbers for this site come from traffic counters in the parking area. Although the majority of visitors initially stop at this site to use the restroom, visitors are rewarded with interpretive panels and a short accessible paved trail. Musket Shot Springs aside, visitations to the Browns Park SRMA and the Upper Green River Corridor have consistently received the highest levels of recreation related visitation in the field office based on our historic RMIS data.

The fastest growing visitation is occurring within our ERMA at the newly designated McCoy Flats trailhead. Starting in FY 2014, the recreation staff at the VFO placed traffic counters at all of our trailheads to develop a more accurate monitoring program.

G. Visitor Demographics

The most reliable information on visitor demographics comes from data gathered for the National Visitation Use Monitoring (NVUM) study. The Ashley National Forest conducted visitor use monitoring in 2002 - 2014. The results shown below provide insight into the overall recreational visitation to the Uintah Basin. Several differences occur between the recreation opportunities available on the Forest and the more arid BLM managed lands; however, the BLM has not conducted visitor use surveys to gather similar statistical data to the VFO. NVUM survey remains our most accurate means of analyzing regionally specific data concerning the recreational visitation of the Uintah Basin.

Table 12 - Annual Ashley National Forest recreation use estimate

| National Forest Visits | | Site Visits | | Wilderness Visits | |
|------------------------|------------|-------------|------------|-------------------|------------|
| A. Visits | Error Rate | Visits | Error Rate | B. Visits | Error Rate |
| 1,416,867 | 13.2 % | 1,580,728 | 12.8 % | 11,778 | 23.6 % |

Descriptions of forest visitors are based on those individuals that stopped at the predetermined check points and were willing to take the time to be interviewed.

Table 13 - Gender distribution of Ashley NF recreation visitors

| Gender | Male 74.4% | Female 25.6% |
|--------|------------|--------------|
| | | |

Table 14 - Age distribution of Ashley NF recreation visitors

| Age Group | Percent in group |
|-----------|------------------|
| Under 16 | 21.5 % |
| 16-20 | 2.3 % |
| 21-30 | 9.6 % |
| 31-40 | 12.8 % |
| 41-50 | 24.6 % |
| 51-60 | 11.1 % |
| 61-70 | 15.5 % |
| Over 70 | 2.5 % |

Visitors categorized themselves into one of seven race/ethnicity categories.

Table 15 - Origin of recreational visitors (2014)

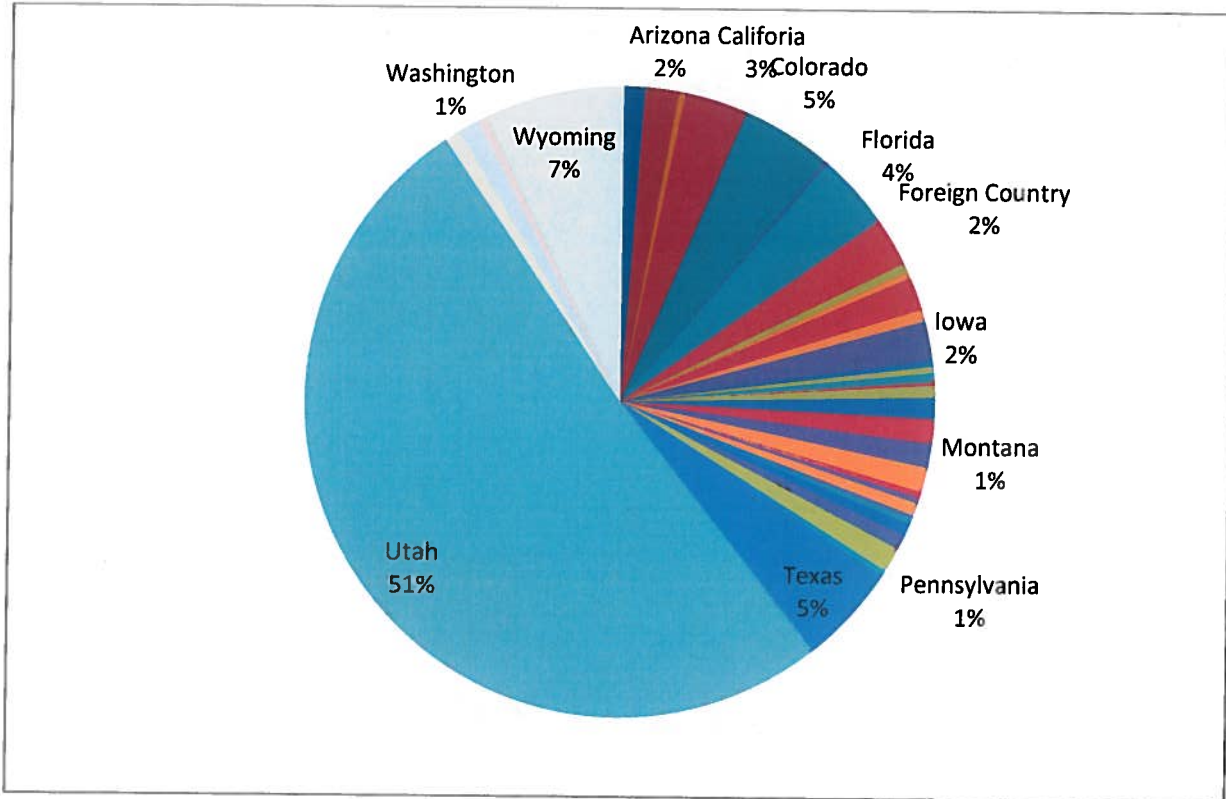


Table 16 - Originating county of Utah visitors surveyed (2014)

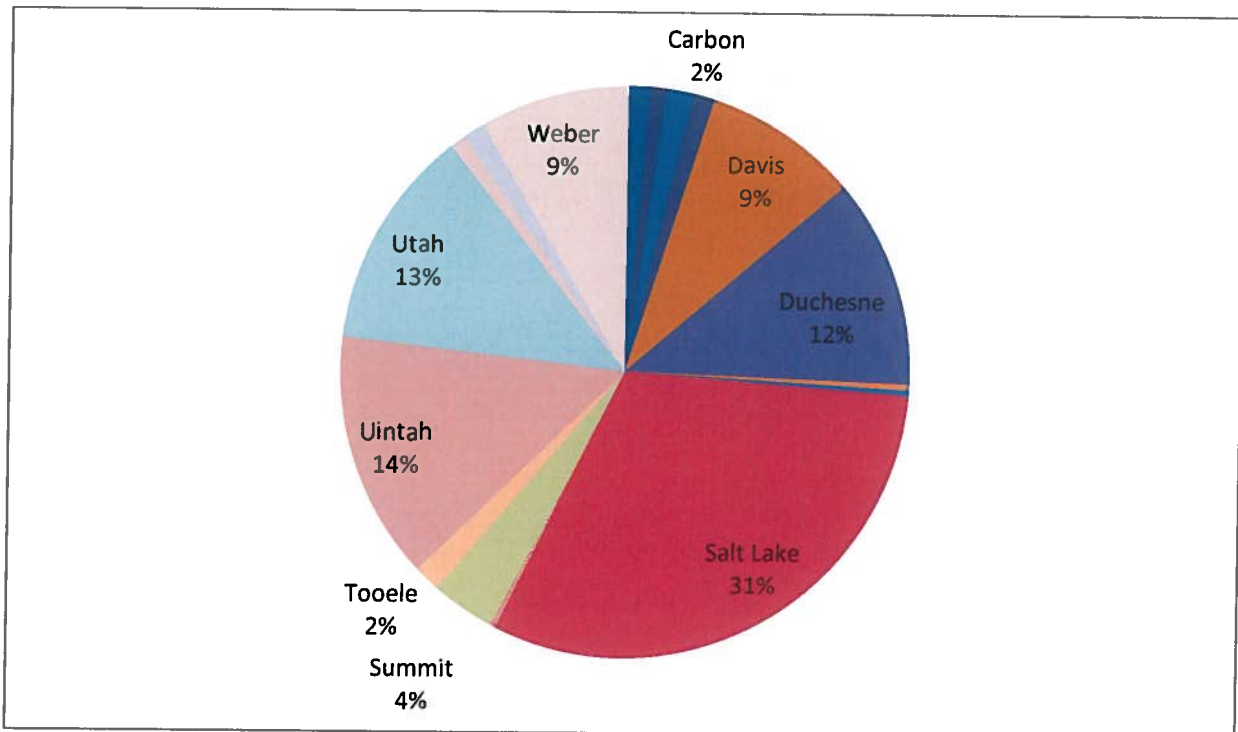


Table 17 - Race/ethnicity of Ashley NF recreation visitors

| Category | Total percent national forest visits |
|---|--------------------------------------|
| Black/African American | 0.1 |
| Asian | 0.3 |
| White | 96.4 |
| American Indian/Alaska Native | 0.5 |
| Native Hawaiian or Other Pacific Islander | 0.5 |
| Spanish, Hispanic, or Latino | 0.9 |
| Other | 1.2 |

The top five recreation activities of the visitors were viewing natural features, relaxing, viewing wildlife, fishing, and developed camping (see Table 6). Each visitor also picked one of these activities as their primary activity for their current recreation visit to the forest. The top primary activities were fishing, relaxing, developed camping, viewing natural features, and hunting (see Table 6). Please note that the results of the NVUM activity analysis DO NOT identify the types of activities visitors would like to have offered on the national forests. It also does not tell us about displaced forest visitors, those who no longer visit the forest because the activities they desire are not offered.

Table 18 - Activity participation and primary activity on Ashley NF.

| Activity | Percent participation | Percent who said it was their primary activity |
|--|-----------------------|--|
| Camping in developed sites (family or group) | 31.0 | 12.1 |
| Primitive camping | 5.6 | 0.4 |
| Backpacking, camping in unroaded areas | 2.7 | 1.1 |
| Resorts, cabins and other accommodations on Forest Service managed lands (private or Forest Service run) | 6.2 | 0.2 |
| Picnicking and family day gatherings in developed sites (family or group) | 19.2 | 1.5 |
| Viewing wildlife, birds, fish, etc. on national forest system lands | 45.4 | 2.3 |
| Viewing natural features such as scenery, flowers, etc. on national forest system lands | 64.9 | 10.0 |
| Visiting historic and prehistoric sites/area | 9.8 | 1.0 |
| Visiting a nature center, nature trail or visitor services | 21.6 | 4.2 |
| Nature Study | 3.7 | 0.5 |
| General/other- relaxing, hanging out, escaping noise etc., | 53.5 | 14.5 |
| Fishing- all types | 43.2 | 23.8 |
| Hunting- all types | 8.6 | 6.1 |

| | | |
|---|------|-----|
| Off-highway vehicle travel (4-wheelers, dirt bikes, etc.) | 3.2 | 0.4 |
| Driving for pleasure on roads | 20.8 | 5.4 |
| Snowmobile travel | 0.5 | 0.5 |
| Motorized water travel (boats, ski sleds, etc.) | 7.0 | 2.6 |
| Other motorized land/air activities (plane, other) | 0.2 | 0.0 |
| Hiking or walking | 27.8 | 1.7 |
| Horseback riding | 1.2 | 0.1 |
| Bicycling, including mountain bikes | 6.4 | 0.5 |
| Non-motorized water travel (canoe, raft, etc.) | 5.4 | 3.3 |
| Downhill skiing or snowboarding | 0.0 | 0.0 |
| Cross-country skiing, snow shoeing | 0.4 | 0.3 |
| Other non-motorized activities | 11.6 | 1.4 |
| Gathering mushrooms, berries, firewood, or other natural products | 3.0 | 0.6 |

H. Applicable Plans

Management in the VFO is guided by the *Approved Vernal Field Office Resource Management Plan (RMP)* signed on October 31, 2008. Specific decisions were made concerning the VFO's SRP program. These include:

REC-5: Special Recreation Permits (SRPs) will continue to be considered on a case-by-case basis. All proposed application for permits will be evaluated to determine compliance with the goals and objectives of this plan.

REC-6: Continue to implement the 1979 Green River Management Plan for Desolation and Gray Canyons to protect the Desolation Canyon national Historic Landmark within VFO and the Upper Green Recreation management Plan to provide appropriate use levels while protecting other resources.

REC-12: Maintain or expand infrastructure of all recreational sites, including, but not limited to, cabins, restrooms, campsites, and trail head development and ensure their safety for public use.

Number and Type of Permits Issued in FY 13

During FY 2013, the VFO issued or renewed 41 SRPs. SRPs are authorizations which allow specified recreational uses of the public lands and related waters. They are issued as a means to

manage visitor use, protect natural and cultural resources, and as a mechanism to authorize the following types of recreational uses:

- **Commercial Use:** Commercial use is defined as recreational use of the public lands and related waters for business or financial gain.
- **Competitive Use:** Competitive use is defined as organized, sanctioned, or structured use, event, or activity on public land in which two or more contestants compete and either of the following elements apply:
 - Participants register, enter, or complete an application of the event; or
 - A predetermined course or area is designated
- **Organized Group Activity and Event Use:** Organized group/event permits are for group outdoor recreation activities or events which are neither commercial nor competitive. For example, the authorized officer determines when a permit is required based on planning decisions, resource concerns, potential user conflicts, or public health and safety issues.
- **Vending:** Vendor Permits are temporary, short-term. Non-exclusive, revocable authorizations to sell goods or services on public lands in conjunction with a recreation activity.

Table 19 – Total number and type of permits issued during FY 2013

| Customer | Permit Type | Primary SRMA/ERMA | Primary Activity |
|-----------------------------------|-------------|-----------------------|-------------------|
| 2 Dog Huntin | Commercial | VFO ERMA | Hunting |
| Bear Paw Outfitters | Commercial | VFO ERMA | Hunting |
| Book Cliffs Outfitters | Commercial | VFO ERMA | Hunting |
| Cathedral Bluff Outfitters | Commercial | VFO ERMA | Hunting |
| Centennial Canoe | Commercial | White River | River |
| Classic Lifeguard | Commercial | Red Mountain-Dry Fork | Outdoor Education |
| Colletts Mountain Resorts Inc. | Commercial | Browns Park | Fishing |
| CR Weddings and Catering | Vending | VFO ERMA | Catering |
| Dinosaur Expeditions | Commercial | Browns Park | River Trips |
| Dinosaur Expeditions | Commercial | Red Mountain-Dry Fork | Mountain Biking |
| Don Hatch River Expeditions | Commercial | Browns Park | Fishing |
| Eagle Outfitters, Inc. | Commercial | Browns Park | Fishing |
| Elite Outfitters | Commercial | VFO ERMA | Hunting |
| Flaming Gorge Recreation Services | Commercial | Browns Park SRMA | Fishing |
| Green River Drifters llc | Commercial | Browns Park SRMA | Fishing |
| Green River Outfitters | Commercial | Browns Park SRMA | Fishing |

| | | | |
|--|-------------|-----------------------|--------------------|
| HHH Hunting, Inc. | Commercial | VFO ERMA | Hunting |
| Kenny's Custom hunts | Commercial | VFO ERMA | Hunting |
| Lone Tree Outfitters | Commercial | VFO ERMA | Hunting |
| Mossback Guides & Outfitters | Commercial | VFO ERMA | Hunting |
| Mountain Home Youth Ranch | Commercial | VFO ERMA | Wilderness Therapy |
| National Outdoor Leadership School (NOLS) | Commercial | VFO ERMA | Outdoor Education |
| North Eastern Mountain Biking Club (NUMB) Fest | Commercial | VFO ERMA | Mountain Biking |
| Old Moe Guide Service | Commercial | Browns Park SRMA | Fishing |
| Pines Ranch Outfitters | Commercial | VFO ERMA | Hunting |
| River Runners Transport | Commercial | Browns Park SRMA | River Trips |
| Rough Riders Outfitters | Commercial | VFO ERMA | Hunting |
| Runtastic Events | Commercial | Red Mountain-Dry Fork | Running |
| Second Nature | Commercial | VFO ERMA | Wilderness Therapy |
| Spinner Fall Guide Service | Commercial | Browns Park SRMA | Fishing |
| Trout Bum 2 | Commercial | Browns Park SRMA | Fishing |
| Trout Creek Flies, Inc. | Competitive | Browns Park SRMA | Fishing |
| Trout Unlimited – One Fly Competition | Competitive | Browns Park SRMA | Fishing |
| Under Armor | Commercial | VFO ERMA | Filming |
| Utah Salt Flats Racing Association | Commercial | VFO ERMA | Racing |
| Wade Lemon Hunting | Commercial | VFO ERMA | Hunting |
| Walkabout Therapeutic Expedition | Commercial | VFO ERMA | Wilderness Therapy |
| Western River Flyfishing | Commercial | Browns Park SRMA | Fishing |
| White Water Canoe Co | Commercial | White River SRMA | River Trips |
| Wild Mountain Outfitters | Commercial | VFO ERMA | Hunting |
| Xtreme Outfitters | Commercial | VFO ERMA | Hunting |

I. Existing Partnerships, Agreements, and Volunteer Programs

The VFO has several agreement and partnerships in place to improve the overall management of the recreational resources within the field office. These include:

- Service First Agreement with the Ashley National Forest
- Cooperative Agreement with BLM White River Field Office
- Green River Outfitter and Guide Association (GROGA)
- Trout Unlimited
- Backcountry Horseman
- NUMB

- Uintah Mountain Club
- Intermountain Natural History Association (INHA)

II. Description of the Permitting Program

The primary recreational activities that SRPs are issued for within the VFO include hunting, fishing and wilderness therapy. Wilderness therapy provides the majority of SRP generated income, followed by outfitting and guiding related to fishing and river trips.

Table 20 – Primary SRP activities

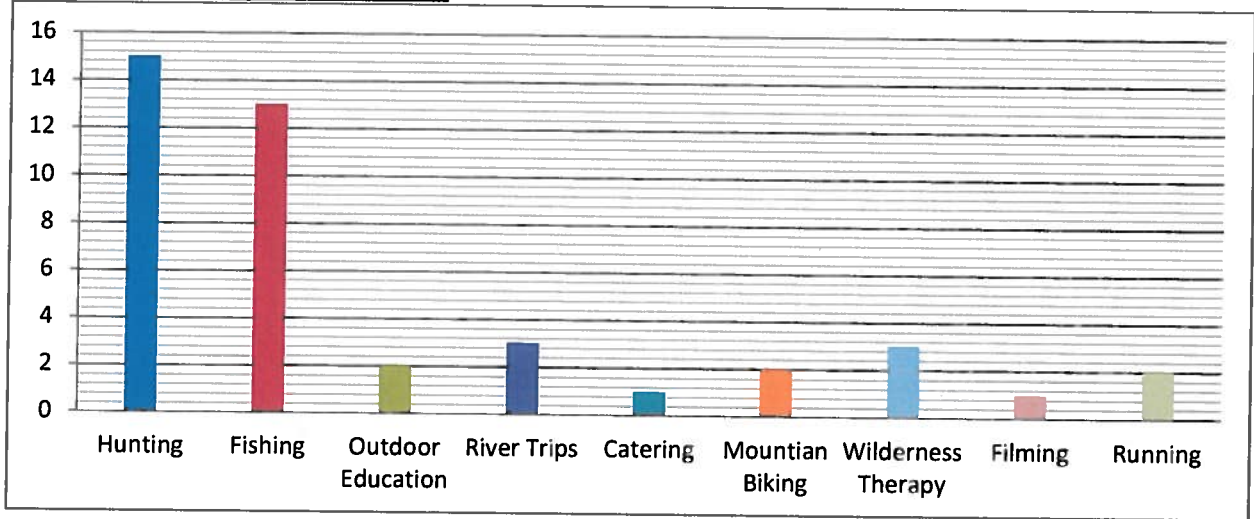
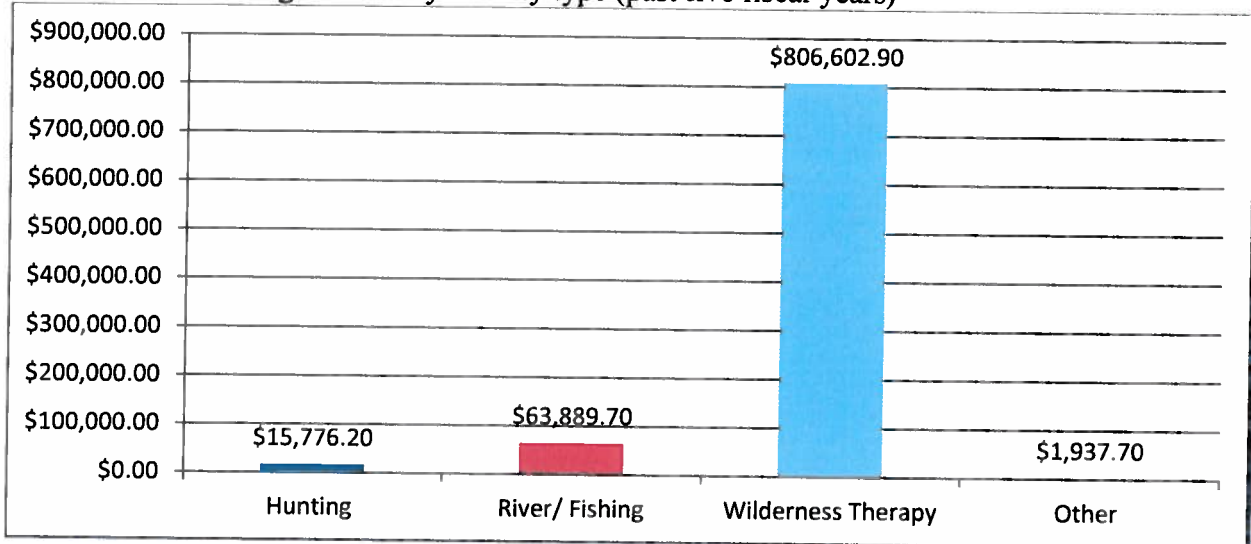


Table 21 – Revenue generated by activity type (past five fiscal years)



A. Permits Issued in Past Five Years

During the past five years the VFO has issued 48 SRPs. Seven of the forty eight have gone out of business and no longer hold active BLM permits. Of those, two were wilderness therapy

groups including Mountain Home Youth Ranch which accounted for approximately 9% of annual revenue generated during the past five years.

Table 22 – Total number and type of permits issued during the past five fiscal years

| SRP Holder | Primary Activity | FY 2013 | FY 2012 | FY 2011 | FY 2010 | FY 2009 |
|--|--------------------|-------------|-------------|------------|-------------|------------|
| 2 Dog Huntin | Hunt | \$555.00 | \$165.75 | \$345.00 | \$95.00 | \$95.00 |
| Ashley Valley Wilderness Inc. | Wilderness Therapy | \$0.00 | \$0.00 | \$2,208.48 | \$13,358.00 | \$0.00 |
| Bear Paw Outfitters | Hunt | \$100.00 | \$375.00 | \$1,027.00 | \$178.50 | \$95.00 |
| Book Cliffs Outfitters | Hunt | \$135.00 | \$0.00 | \$150.00 | \$0.00 | \$95.00 |
| Bruce Nay | Hunt | \$0.00 | \$100.00 | \$0.00 | \$95.00 | \$0.00 |
| Cathedral Bluff Outfitters | Hunt | \$100.00 | \$100.00 | \$95.00 | \$95.00 | \$95.00 |
| Centennial Canoe | Fish | \$541.25 | \$0.00 | \$39.50 | \$55.50 | \$449.10 |
| Classic Lifeguard | Other | \$0.00 | \$0.00 | \$316.70 | \$0.00 | \$0.00 |
| Colletts Mountain Resorts Inc. | Fish | \$4,736.08 | \$2,487.93 | \$2,602.25 | \$2,139.53 | \$1,782.57 |
| CR Weddings and Catering | Other | \$100.00 | \$0.00 | \$0.00 | \$0.00 | \$0.00 |
| Dinosaur Expeditions | Fish | \$100.00 | \$100.00 | \$95.00 | \$102.63 | \$95.00 |
| Dinosaur Expeditions | Fish | \$100.00 | \$0.00 | \$0.00 | \$0.00 | \$0.00 |
| DJ's Hunting & Guide Services | Hunt | \$0.00 | \$0.00 | \$0.00 | \$95.00 | \$95.00 |
| Don Hatch River Expeditions | Fish | \$360.22 | \$207.34 | \$95.00 | \$95.00 | \$95.00 |
| Droptine Guides | Hunt | \$0.00 | \$100.00 | \$95.00 | \$375.00 | \$210.00 |
| Eagle Outfitters, Inc. | Fish | \$100.00 | \$100.00 | \$151.50 | \$130.88 | \$130.35 |
| Elite Outfitters | Hunt | \$261.00 | \$100.00 | \$225.45 | \$153.00 | \$180.00 |
| Flaming Gorge Recreation Services | Fish | \$200.00 | \$384.63 | \$236.75 | \$226.78 | \$95.00 |
| Green River Drifters llc | Fish | \$392.20 | \$100.00 | \$359.55 | \$412.03 | \$448.00 |
| Green River Outfitters | Fish | \$1,379.76 | \$843.41 | \$902.39 | \$647.96 | \$546.30 |
| HHH Hunting, Inc. | Hunt | \$105.00 | \$270.00 | \$0.00 | \$95.00 | \$0.00 |
| Kenny's Custom hunts | Hunt | \$100.00 | \$100.00 | \$95.00 | \$95.00 | \$95.00 |
| Lone Tree Outfitters | Hunt | \$100.00 | \$100.00 | \$120.00 | \$219.00 | \$95.00 |
| Lost Park Guide | Hunt | \$0.00 | \$100.00 | \$95.00 | \$95.00 | \$95.00 |
| Mossback Guides & Outfitters | Hunt | \$100.00 | \$198.00 | \$95.00 | \$95.00 | \$180.00 |
| Mountain Home Youth Ranch | Wilderness Therapy | \$20,491.19 | \$11,131.14 | \$0.00 | \$0.00 | \$0.00 |
| National Outdoor Leadership School (NOLS) | Fish | \$1,964.20 | \$1,741.47 | \$2,045.52 | \$1,003.37 | \$1,154.25 |
| North Eastern Mountain Biking Club (NUMB) Fest | Other | \$100.00 | \$0.00 | \$0.00 | \$0.00 | \$0.00 |
| Old Moe Guide Service | Fish | \$2,575.61 | \$2,258.45 | \$14.00 | \$1,219.05 | \$633.00 |

| | | | | | | |
|---------------------------------------|--------------------|--------------|--------------|--------------|--------------|--------------|
| Pines Ranch Outfitters | Hunt | \$267.00 | \$403.50 | \$267.00 | \$95.00 | \$267.00 |
| River Runners Transport | Fish | \$100.00 | \$100.00 | \$95.00 | \$117.60 | \$265.95 |
| Rosebud Llams | Hunt | \$0.00 | \$0.00 | \$0.00 | \$0.00 | \$95.00 |
| Rough Riders Outfitters | Hunt | \$100.00 | \$100.00 | \$95.00 | \$300.00 | \$95.00 |
| Runtastic Events | Other | \$915.00 | \$231.00 | \$0.00 | \$0.00 | \$0.00 |
| Second Nature | Wilderness Therapy | \$175,388.17 | \$118,722.09 | \$156,786.97 | \$138,541.05 | \$168,975.81 |
| Spinner Fall Guide Service | Fish | \$1,675.13 | \$1,583.37 | \$1,587.00 | \$1,528.00 | \$140.25 |
| Triple H Hunting Inc. | Hunt | \$0.00 | \$0.00 | \$156.00 | \$0.00 | \$95.00 |
| Trout Bum 2 | Fish | \$1,027.50 | \$1,383.00 | \$1,209.00 | \$539.85 | \$242.85 |
| Trout Creek Flies, Inc. | Fish | \$2,376.52 | \$656.60 | \$1,364.12 | \$1,205.85 | \$1,037.30 |
| Trout Unlimited – One Fly Competition | Fish | \$100.00 | \$0.00 | \$0.00 | \$0.00 | \$0.00 |
| Under Armor | Fish | \$0.00 | \$0.00 | \$0.00 | \$0.00 | \$0.00 |
| Utah Salt Flats Racing Association | Other | \$375.00 | \$0.00 | \$0.00 | \$0.00 | \$0.00 |
| Wade Lemon Hunting | Hunt | \$360.00 | \$150.00 | \$95.00 | \$0.00 | \$190.00 |
| Walkabout Therapeutic Expedition | Wilderness Therapy | \$1,000.00 | \$0.00 | \$0.00 | \$0.00 | \$0.00 |
| Western River Flyfishing | Fish | \$2,182.65 | \$1,603.46 | \$1,194.04 | \$926.22 | \$354.93 |
| White Water Canoe Co | Fish | \$115.20 | \$100.00 | \$95.00 | \$313.00 | \$95.00 |
| Wild Mountain Outfitters | Hunt | \$534.00 | \$1,239.00 | \$780.00 | \$660.00 | \$180.00 |
| Xtreme Outfitters | Hunt | \$100.00 | \$100.00 | \$95.00 | \$95.00 | \$240.00 |

* No longer hold an active SRP with the VFO

III. Revenues

A. Actual Revenues From Past Five Years

Actual revenues generated by the VFO's SRP program can be broken down into two major categories including river related SRPs and upland related SRPs.

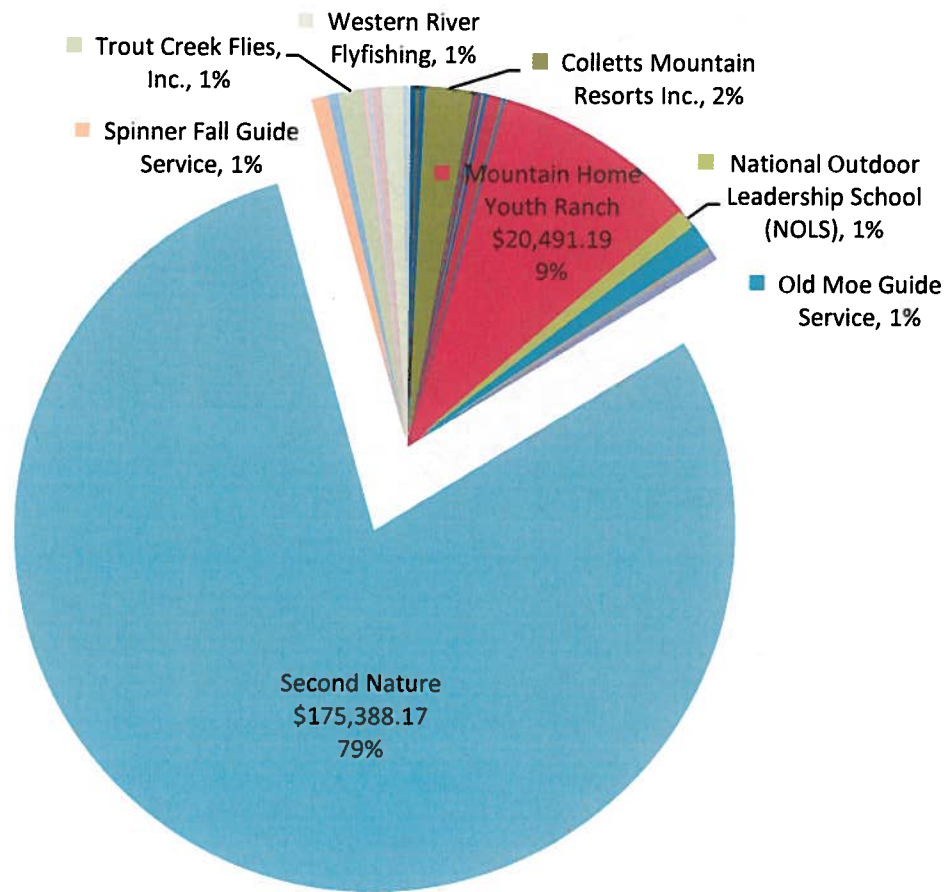
Table 23 – Revenue generated from river related SRPs

| Fiscal Year | Carry Over | New Budget Allocations | Total Budget |
|-------------|------------|------------------------|--------------|
| 2009 | \$63,284 | \$6,032 | \$69,316 |
| 2010 | \$52,690 | \$9,700 | \$62,389 |
| 2011 | \$46,969 | \$14,526 | \$61,495 |
| 2012 | \$49,559 | \$1,401 | \$50,959 |
| 2013 | \$32,645 | \$21,932 | \$54,577 |

Table 24 – Revenue generated from upland related SRPs

| Fiscal Year | Carry Over | New Budget Allocations | Total Budget |
|-------------|------------|------------------------|--------------|
| 2009 | \$577,468 | \$173,071 | \$750,539 |
| 2010 | \$453,659 | \$142,380 | \$596,039 |
| 2011 | \$486,682 | \$165,189 | \$651,871 |
| 2012 | \$468,674 | \$179,989 | \$648,663 |
| 2013 | \$499,307 | \$194,028 | \$693,335 |

Table 25 – Five year average revenue generated by individual companies



B. Projected Annual Revenues

Projected revenues are based on the five year average of the revenue our SRP fees generated. With the loss of the Mountain Homes (financially significant permit holder) it can be expected that the overall revenue generation will be reduced by around \$25,000 annually. If Second Nature were to cease providing services within the VFO, baseline funding would need to cover all labor costs currently covered by SRP generated funds.

Additional funding streams via grants, recreation fee program expansion, SRP solicitation (etc.) will continue to be explored with the goal of increasing revenues for recreation management

within the VFO. A programmatic EA for wilderness therapy programs should become a priority for the VFO recreation staff. This would allow the Second Nature program to expand, and create additional program opportunities.

Table 26 – Five year averages for revenue generated from river related SRPs

| Average Carry Over | Average Annual Budget Allocations | Total Annual Budget |
|--------------------|-----------------------------------|---------------------|
| \$49,029 | \$10,718 | \$59,747 |

Table 27 – Five year averages for revenue generated from upland related SRPs

| Average Carry Over | Average Annual Budget Allocations | Total Annual Budget |
|--------------------|-----------------------------------|---------------------|
| \$497,158 | \$170,931 | \$668,090 |

Table 28 – Projected annual revenues for the next five years

| | Projected Revenues |
|---------|--------------------|
| FY 2014 | \$156,649 |
| FY 2015 | +\$156,649 |
| FY 2016 | +\$156,649 |
| FY 2017 | +\$156,649 |
| FY 2018 | +\$156,649 |

IV. Expenditures

A. Expenditures During the Past Five Years

The following tables summarize the actual expenditures of collected permit fees over the past five years. Expenditures are broken down to include labor, travel, vehicles and all other obligations (including supplies). Customer service, fee collection, law enforcement, and all recreation staff are included in the labor costs.

Table 29 – Expenditures from river related SRP fees

| Fiscal Year | Carry Over | New Budget Allocations | Total Budget | Labor | Travel | Vehicles | All Other Obligations | Total Obligations | Balance |
|-------------|------------|------------------------|--------------|----------|--------|----------|-----------------------|-------------------|----------|
| 2009 | \$63,284 | \$6,032 | \$69,316 | \$14,517 | \$0 | \$2,065 | \$44 | \$16,626 | \$52,690 |
| 2010 | \$52,690 | \$9,700 | \$62,389 | \$12,687 | \$0 | \$1,994 | \$739 | \$15,420 | \$46,969 |
| 2011 | \$46,969 | \$14,526 | \$61,495 | \$8,337 | \$0 | \$2,529 | \$1,070 | \$11,936 | \$49,559 |
| 2012 | \$49,559 | \$1,401 | \$50,959 | \$16,680 | \$0 | \$1,509 | \$125 | \$18,314 | \$32,645 |
| 2013 | \$32,645 | \$21,932 | \$54,577 | \$11,228 | \$0 | \$1,327 | -\$46 | \$12,509 | \$42,068 |

Table 30 – Expenditures from upland related SRP fees

| Fiscal Year | Carry Over | New Budget Allocations | Total Budget | Labor | Travel | Vehicles | All Other Obligations | Total Obligations | Balance |
|-------------|------------|------------------------|--------------|-----------|----------|----------|-----------------------|-------------------|-----------|
| 2009 | \$577,468 | \$173,071 | \$750,539 | \$136,978 | \$1,265 | \$6,927 | \$151,336 | \$296,506 | \$454,033 |
| 2010 | \$453,659 | \$142,380 | \$596,039 | \$59,241 | \$11,532 | \$7,256 | \$31,328 | \$109,357 | \$486,682 |
| 2011 | \$486,682 | \$165,189 | \$651,871 | \$85,864 | \$5,077 | \$8,162 | \$84,094 | \$183,197 | \$468,674 |
| 2012 | \$468,674 | \$179,989 | \$648,663 | \$90,367 | \$4,590 | \$7,700 | \$46,700 | \$149,357 | \$499,306 |
| 2013 | \$499,307 | \$194,028 | \$693,335 | \$211,637 | \$3,396 | \$1,847 | \$35,758 | \$252,638 | \$440,697 |

The “All Other Obligations” column includes funds spent on recreation facility maintenance and construction projects, field supplies, and other major recreation projects. Major expenditures from the past five years include:

- Advanced Resource Solutions (ARS) contract to assist with the travel management process at the VFO (2009-2014)
- Horse corral construction and water take installation near Jarvie Ranch (2009/20010)
- Construction of J-Boy Trail and maintenance on our Red Fleet Trail System (2010)
- Box Trailer for Vernal BLM Trail Crew (2010)
- Shade structures for Pelican Lake (2011)
- McCoy Flats Trailhead construction and bathroom installation (2011)
- Yamaha 450 WR Dirt Bike (2012)
- Directional and interpretive signs for the McCoy Flats Trail System (2013)
- Polaris Razor side by side (2013)

B. Additional Costs to the VFO to Administer SRPs

Currently the Vernal Field Office and the Ashley National Forest have a Service First Agreement that covers the management of the Upper Green River. A Service First Agreement is a partnership authority among four agencies: Bureau of Land Management, Forest Service, National Park Service and U.S. Fish and Wildlife Service. The Consolidated Appropriations Act for FY 2012 made the Service First authority permanent. In FY 2014, the Consolidated Appropriations Act extended the authority to all bureaus and offices of either Department (Public Law 113-76).

The overall goal of Service First is to achieve seamless operation among agencies to accomplish the goals of improved stewardship of the land, improved customer service, and improved operational efficiency through the use of the Service First authority. This agreement will be in effect until December 31, 2022. Each year, an annual operating plan is prepared and agreed upon by both agencies. Management issues, river site/trail improvement, law enforcement, and revenue/use of the corridor are covered. Costs to the BLM include:

Table 31 –Service First obligations

| FY | Program Administration | Seasonal Employment | Housing | Supplies | Shuttle Service | Boat Expenses | Toilet Pump | Vehicle | Award | Total |
|----|------------------------|---------------------|---------|----------|-----------------|---------------|-------------|---------|---------|----------|
| 09 | \$5,000 | \$15,213 | \$600 | \$1,000 | \$1,500 | \$1,000 | \$1,500 | \$200 | \$1,000 | \$27,013 |
| 10 | \$5,660 | \$19,800 | \$600 | \$1,000 | \$1,500 | \$1,000 | \$1,500 | \$200 | \$1,000 | \$32,260 |
| 11 | \$5,000 | \$15,213 | \$600 | \$1,000 | \$1,500 | \$1,000 | \$1,500 | \$200 | \$1,000 | \$27,013 |
| 12 | \$6,040 | \$14,300 | \$600 | \$1,000 | \$1,500 | \$1,000 | \$1,500 | \$200 | \$500 | \$26,640 |
| 13 | \$5,580 | \$14,300 | \$600 | \$1,000 | \$1,500 | \$1,000 | \$1,500 | \$200 | \$500 | \$26,180 |

C. Deferred Maintenance Projects (L1653)

Table 32 – Projects completed supporting the permitting program during the past five fiscal years

| Fiscal Year | Project Name | Funded Program | Total |
|-------------|--|----------------|-----------|
| 2009 | John Jarvie Historical Site Enhancements | LDDMJE4M0000 | \$124 |
| 2009 | Pariette Flood Control Dam | LADMJE3M0000 | \$152,000 |
| 2009 | Project and Contract Management | LDDMJC3V0000 | \$16,000 |
| 2010 | John Jarvie Historical Site Enhancements | LDDMJE4M0000 | \$17,141 |
| 2010 | Water Storage at Indian Crossing Boat Ramp | LDDMZC1V0000 | \$18,272 |
| 2011 | John Jarvie Historical Site Enhancements | LDDMJE4M0000 | \$2,735 |
| 2011 | Water Storage at Indian Crossing Boat Ramp | LDDMZC1V0000 | \$37 |

V. Priorities for Future Expenditures

A. Priority Expenditures

Priority Expenditures are broken down to include labor, travel, vehicles and all other obligations (including supplies). Customer service, fee collection, law enforcement, and all recreation staff are included in the labor costs.

Priority #1 - Labor

Our first priority will be to continue funding the recreation related staffing positions that support the SRP program at the VFO. During FY 2014, both full-time Outdoor Recreation Planners GS-11 (0023) are programed for seven months of full time salary to revenue generated through the SRP program. This was done to reduce the amount of surplus available in our 1232 account and free up funds in other program areas. During the next five fiscal years, projections are based on the Outdoor Recreation Planners coding two work months per year in 1232.

Table 33 – Labor expenditure for recreation program (FY 2014)

| Priorities for Future Expenditures (Labor) | | | | | | |
|--|----------------|------------------|---------|------------|---------------|---------------------|
| Position | Series & Grade | Appointment Type | Hour | Month | Annual Months | Total |
| AFM Renewable Resources | GS-0401 (13) | Permanent | \$63.31 | \$5,064.80 | 2 | \$10,129.60 |
| BC Surf Mgmt/Spec. Project | GS-0401 (12) | Permanent | \$54.67 | \$4,373.60 | 1.5 | \$6,560.40 |
| Recreation Planner | GS-0023 (11) | Permanent | \$61.63 | \$4,930.40 | 7 | \$34,512.80 |
| Recreation Planner | GS-0023 (11) | Permanent | \$53.11 | \$4,248.80 | 7 | \$29,741.60 |
| SRP Assistant | GS-0023 (7) | Term | \$33.09 | \$2,647.20 | 8 | \$21,177.60 |
| Park Ranger (Jarvie Ranger) | GS-0025 (7) | Permanent | \$33.09 | \$2,647.20 | 11 | \$29,119.20 |
| River Ranger | GS-0025 (5/7) | Seasonal | \$19.81 | \$1,584.80 | 6 | \$9,508.80 |
| Administrative Assistant | GS-0303 (5) | Term | \$19.81 | \$1,584.80 | 11 | \$17,432.80 |
| Recreation Technician (SRP) | GS-0462 (5) | Term | \$19.81 | \$1,584.80 | 6 | \$9,508.80 |
| Total | | | | | | \$119,572.40 |

* Currently not hired

Table 34 – Labor expenditure for Law Enforcement (FY 2014)

| Priorities for Future Expenditures (Labor) | | | | | |
|--|----------------|---------|------------|---------------|-------------------|
| Position | Series & Grade | Hour | Month | Annual Months | Total |
| Law Enforcement | Contract | \$70.82 | \$5,665.60 | 1.5 | \$8,498.40 |
| Total | | | | | \$8,498.40 |

* Currently not hired

Table 35 – Labor expenditure for Force Account Crew (FY 2014)

| FY 2014 (Labor) | | | | | |
|---------------------------|----------------|---------|------------|---------------|--------------------|
| Position | Series & Grade | Hour | Month | Annual Months | Total |
| Civil Engineer | GS-0801(11) | \$56.42 | \$4,513.60 | 0.9 | \$4,062.24 |
| Engine Equipment Operator | WG-5716 (10) | \$47.33 | \$3,786.40 | 2 | \$7,572.80 |
| Engine Equipment Operator | WG-5716 (10) | \$47.33 | \$3,786.40 | 2 | \$7,572.80 |
| Secretary (OA) | GS-0318 (9) | \$32.15 | \$2,572.00 | 0.5 | \$1,286.00 |
| Maintenance Worker | WG-4749 (7) | \$38.80 | \$3,104.00 | 5 | \$15,520.00 |
| Total | | | | | \$36,013.84 |

Table 36 – Total labor costs (FY 2014)

| Program | Number of Staff | Hour | Month | Annual Months | Total |
|--------------------------|-----------------|----------|-------------|---------------|---------------------|
| Recreation Program Staff | 6 | \$358.33 | \$28,666.40 | 51 | \$119,572.40 |
| Law Enforcement | 1 | \$70.82 | \$5,665.60 | 1.5 | \$8,498.40 |
| Force Account Crew | 5 | \$222.03 | \$17,762.40 | 10.4 | \$36,013.84 |
| Grand Total | | | | | \$164,084.64 |

Priority #2 – River Corridor Maintenance

The Service First Agreement between the BLM, VFO and the Ashley National Forest (Agreement No. 12-IA-110401000-012) signed in 2012 has a ten year duration. Service first expenditures will continue to be based on the mutually agreed upon annual operating plans.

Table 37 – Service First expenditures

| Priorities for Future Expenditures (Service First Agreement) | | | | | | | | | | |
|--|----------------|---------------------|---------|----------|-----------------|---------------|-------------|---------|---------|---------|
| FY | Program Admin. | Seasonal Employment | Housing | Supplies | Shuttle Service | Boat Expenses | Toilet Pump | Vehicle | Award | Total |
| 9 | \$5,000 | \$15,213 | \$600 | \$1,000 | \$1,500 | \$1,000 | \$1,500 | \$200 | \$1,000 | \$6,800 |
| 10 | \$5,660 | \$19,800 | \$600 | \$1,000 | \$1,500 | \$1,000 | \$1,500 | \$200 | \$1,000 | \$5,300 |
| 11 | \$5,000 | \$15,213 | \$600 | \$1,000 | \$1,500 | \$1,000 | \$1,500 | \$200 | \$1,000 | \$6,800 |
| 12 | \$6,040 | \$14,300 | \$600 | \$1,000 | \$1,500 | \$1,000 | \$1,500 | \$200 | \$500 | \$5,300 |
| 13 | \$5,580 | \$14,300 | \$600 | \$1,000 | \$1,500 | \$1,000 | \$1,500 | \$200 | \$500 | \$6,300 |
| Average | \$5,456 | \$15,765 | \$600 | \$1,000 | \$1,500 | \$1,000 | \$1,500 | \$200 | \$800 | \$6,600 |

* Covered in labor costs list in the tables above

Priority #3 – Jarvie Ranch Festivals

For the past twenty-four years the VFO has held at least one annual festival at the John Jarvie Historic Ranch in Brown’s Park. The Jarvie Ranch is located on the banks of the Upper Green River and is a favorite stop of many of the river guiding SRP companies providing fishing trips on the river. The VFO has taken different approaches to the organization of these festivals, all of which primarily targeted youth under the age of 18. Our outreach efforts have generally been focused on the towns located within a hundred miles of the Jarvie Ranch. Moving forward with this tradition, the VFO would like to propose hosting two festivals at the Jarvie Ranch per year for the next five year. The first would occur mid-May the weekend after Mother’s Day. The second would occur in October the weekend before Halloween. The overall objective of the festivals would be:

The Jarvie Festival can provide a platform where the BLM can raise awareness of the importance of historic/archaeological resources through interpretation and education. This can be done in a variety of ways. Education is achieved through people narrating the history of Brown’s Park and the John Jarvie Ranch while interpretation builds on the narrative to make it more approachable to the general public. By combining both approaches, the general public can begin to appreciate the significance of not only Brown’s Park and the Jarvie Ranch but archaeological resources as a whole. This can lead to a better understanding of why archaeological resources are protected and how site stewardship is an integral part this protection.

Table 38 – Festival activities

| |
|-----------------|
| Jarvie Festival |
|-----------------|

| Activity | Provided by |
|---|--|
| Set-up & Take-down | BLM Employees |
| Bluegrass Music | Volunteers |
| Cowboy Poetry | Cowboy Poets of Utah |
| Native American Dancers | Ute Tribal Members - Vendor |
| Mountain Men Reenactments | Local Chapter of Mountain Man Rendezvous Association |
| Wagon Rides | Vendor |
| Blacksmith Demonstrations | Volunteer |
| Leather Craft | BLM Employees |
| Rope Making | BLM Employees |
| Photos with period specific Costumes | BLM Employees |
| Kids Crafts | BLM Employees |
| BLM Informational Booth | BLM Employees |
| FS Informational Booth or Smokey the Bear | Dutch John Ranger Station - Forest Service Employees |
| Flint knapping | BLM Employees |
| Spinning | Volunteers |
| Rag Rug Making | Volunteers |
| Soap making | Volunteers |
| Wildlife Demonstrations (Raptors) | Hawk Watch or BLM Employees |
| Pastry Sales | Brown's Park Home Makers Club |
| Food Vending | Flaming Forge Lodge or Other SRP vender |
| Fly Tying (June) | Green River Outfitter and Guide Association (GROGA) |
| Fly Casting (June) | Vernal High School Escape Club |
| Pumpkin Picking (October) | BLM Employees |
| Haunted Historic Site Decorations (October) | Vernal High School Escape Club |

Cost associated with the festivals would include BLM employee's time and miscellaneous supplies.

Table 39 – Jarvie Festival expenditures

| Jarvie Festival (Labor & Supplies) | | | | | |
|---|----------------|---------|------------|---------------|----------|
| Position | Series & Grade | Hour | Month | Annual Months | Total |
| AFM Renewable Resources | GS-0401 (13) | \$63.31 | \$5,064.80 | 0.18 | \$506.48 |
| BC Surf Mgmt/Spec. Project | GS-0401 (12) | \$54.67 | \$4,373.60 | 0.18 | \$437.36 |
| Recreation Planner | GS-0023 (11) | \$61.63 | \$4,930.40 | 0.18 | \$493.04 |
| Natural Resource Specialist (Youth Coordinator) | GS-0023 (11) | \$53.11 | \$4,248.80 | 0.18 | \$424.88 |
| Natural Resource Specialist (Hawk Watch) | GS-0023 (11) | \$53.11 | \$4,248.80 | 0.18 | \$424.88 |
| Archeologist | GS-0023 (11) | \$53.11 | \$4,248.80 | 0.18 | \$424.88 |
| Archeologist | GS-0023 (11) | \$53.11 | \$4,248.80 | 0.18 | \$424.88 |
| Park Ranger (Jarvie Ranger) | GS-0025 (7) | \$33.09 | \$2,647.20 | 0.18 | \$264.72 |
| Civil Engineer | GS-0801(11) | \$56.42 | \$4,513.60 | 0.18 | \$451.36 |

| | | | | | |
|--|------------------|--|------------|------|------------|
| Secretary (OA) | GS-0318 (9) | \$32.15 | \$2,572.00 | 0.18 | \$257.20 |
| Maintenance Worker | WG-4749 (7) | \$38.80 | \$3,104.00 | 0.18 | \$310.40 |
| Engine Captain | GS-0455 (7) | \$33.09 | \$2,647.20 | 0.18 | \$264.72 |
| Wildland Firefighter (Range Forestry Technician) | GS-0455/0462 (4) | \$19.81 | \$1,584.80 | 0.18 | \$158.48 |
| Wildland Firefighter (Range Forestry Technician) | GS-0455/0462 (4) | \$19.81 | \$1,584.80 | 0.18 | \$158.48 |
| Wildland Firefighter (Range Forestry Technician) | GS-0455/0462 (4) | \$19.81 | \$1,584.80 | 0.18 | \$158.48 |
| Miscellaneous Supplies | | | | | \$2,000.00 |
| Total | | \$7,160.24 per festival or 14,320.48 for both | | | |

Priority #4 – Cost Estimates for Major Expenditures for Services and Facility Enhancements

During the next five fiscal years major expenditures from our SRP fees will be focused on non-motorized trail development. During FY 2013, Uintah County and Vernal BLM applied for a U.S. Park Service grant to develop a master trails plan that would connect Vernal City to the surrounding BLM managed trails within the urban interface. During the planning process for the master trails plan several additional trail segments and reroutes were identified. Construction of the additional trails would be funded through several sources including, appropriated dollars, grant funding (RTP, etc...) and the use of our SRP fees. Volunteers will continue to be utilized to the greatest extent possible for both future trail development and maintenance of the existing trail system.

Table 40 – Cost estimates for facility enhancements

| Fiscal Year | Project Name | Amount | FY Total |
|--------------|--|----------|------------------|
| 2014 | Uintah County Master Trails Plan and site design for three BLM trail-heads | \$12,000 | |
| 2014 | Downhill Flow Trail Contract | \$25,000 | |
| 2014 | River Raft joint purchase (Youth Coordinator & SRP) | \$2,000 | \$64,000 |
| 2015 | Youth trail crew to construction the Little Red Mountain Trail reroute | \$28,000 | |
| 2015 | Trail Construction tools, supplies, signs and culverts | \$8,000 | \$39,200 |
| 2016 | Youth Trail Crew to construct the Brush Creek trail | \$28,000 | |
| 2016 | Trail Construction tools, supplies, signs and culverts | \$6,000 | \$35,960 |
| Total | | | \$139,160 |

B. Revenue Needed in Savings

Ideally, the VFO would like to maintain at least one year of priority #1 (labor) funding in “savings” to ensure the VFO can provide seamless permit administration services, immediately address any imminent threat to public health and safety or environment, and/or to “save up” for

future major infrastructure investments. The total needed would be around \$250,000. The minimum required would be \$200,000.00

C. Annual, Short-term and Long term Expenditures

Annual expenditures include all recreation related labor costs, river corridor maintenance (service first), and the annual Jarvie Ranch Festivals. Short-term expenditures include the project funds needed for the services and facility enhancements. Long term expenditures include the requirement to purchase new vehicles.

Table 41 – Projected expenditures

| Fiscal Year | Carry Over | New Budget | Total Budget | Labor (+2%) | Service First (+5%) | Travel (+5%) | Vehicles (+7.5% to 8%) | Jarvie Fests (+5%) | BLM Facility | Balance |
|-------------|------------|------------|--------------|-------------|---------------------|--------------|------------------------|--------------------|--------------|-----------|
| 2014 | \$482,765 | \$156,649 | \$639,414 | \$164,085 | \$6,600 | \$5,172 | \$8,263 | \$14,320 | \$64,000 | \$376,974 |
| 2015 | \$372,129 | \$156,649 | \$528,778 | \$120,446 | \$6,930 | \$5,431 | \$8,979 | \$15,037 | \$39,200 | \$337,601 |
| 2016 | \$328,706 | \$156,649 | \$485,355 | \$122,855 | \$7,277 | \$5,702 | \$9,731 | \$15,788 | \$35,960 | \$296,937 |
| 2017 | \$283,862 | \$156,649 | \$440,511 | \$125,312 | \$7,640 | \$5,987 | \$10,520 | \$16,578 | \$15,000 | \$272,549 |
| 2018 | \$255,157 | \$156,649 | \$411,806 | \$127,818 | \$8,022 | \$6,287 | \$11,349 | \$17,407 | \$15,000 | \$243,315 |

D. Level of Appropriated Funding needed towards Expenditures

Appropriated funds would be needed to offset the increase in spending of SRP generated funds (L1232) in FY 2014 on labor. A more appropriated spread of sub-activities better reflecting the workload at the VFO should be used. This could be accomplished through an increase in 1020, 1220 and 1310/1311 funding. Existing un-hired recreation positions should remain vacant until additional appropriated funds become available or the SRP program begins generating additional revenue.

Table 42 – Level of appropriated funding needed

| Priorities for Future Expenditures (Labor) | | | | | |
|--|----------------|-------------|------------|---------------|---------------------|
| Position | Series & Grade | Hourly Rate | Month | Annual Months | Total |
| AFM Renewable Resources | GS-0401 (13) | \$63.31 | \$5,064.80 | 1 | \$5,064.80 |
| BC Surf Mgmt/Spec. Project | GS-0401 (12) | \$54.67 | \$4,373.60 | 0.5 | \$2,186.80 |
| Recreation Planner | GS-0023 (11) | \$61.63 | \$4,930.40 | 5 | \$24,652.00 |
| Recreation Planner | GS-0023 (11) | \$53.11 | \$4,248.80 | 5 | \$21,244.00 |
| SRP Assistant | GS-0023 (7) | \$33.09 | \$2,647.20 | 8 | \$21,177.60 |
| Administrative Assistant | GS-0303 (5) | \$19.81 | \$1,584.80 | 11 | \$17,432.80 |
| Recreation technician (SRP) | GS-0462 (5) | \$19.81 | \$1,584.80 | 6 | \$9,508.80 |
| Total | | | | | \$101,266.80 |

* Currently not hired