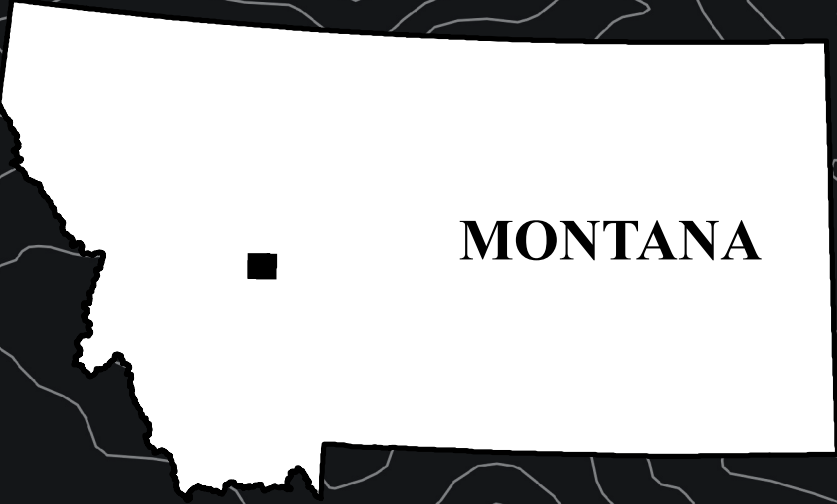


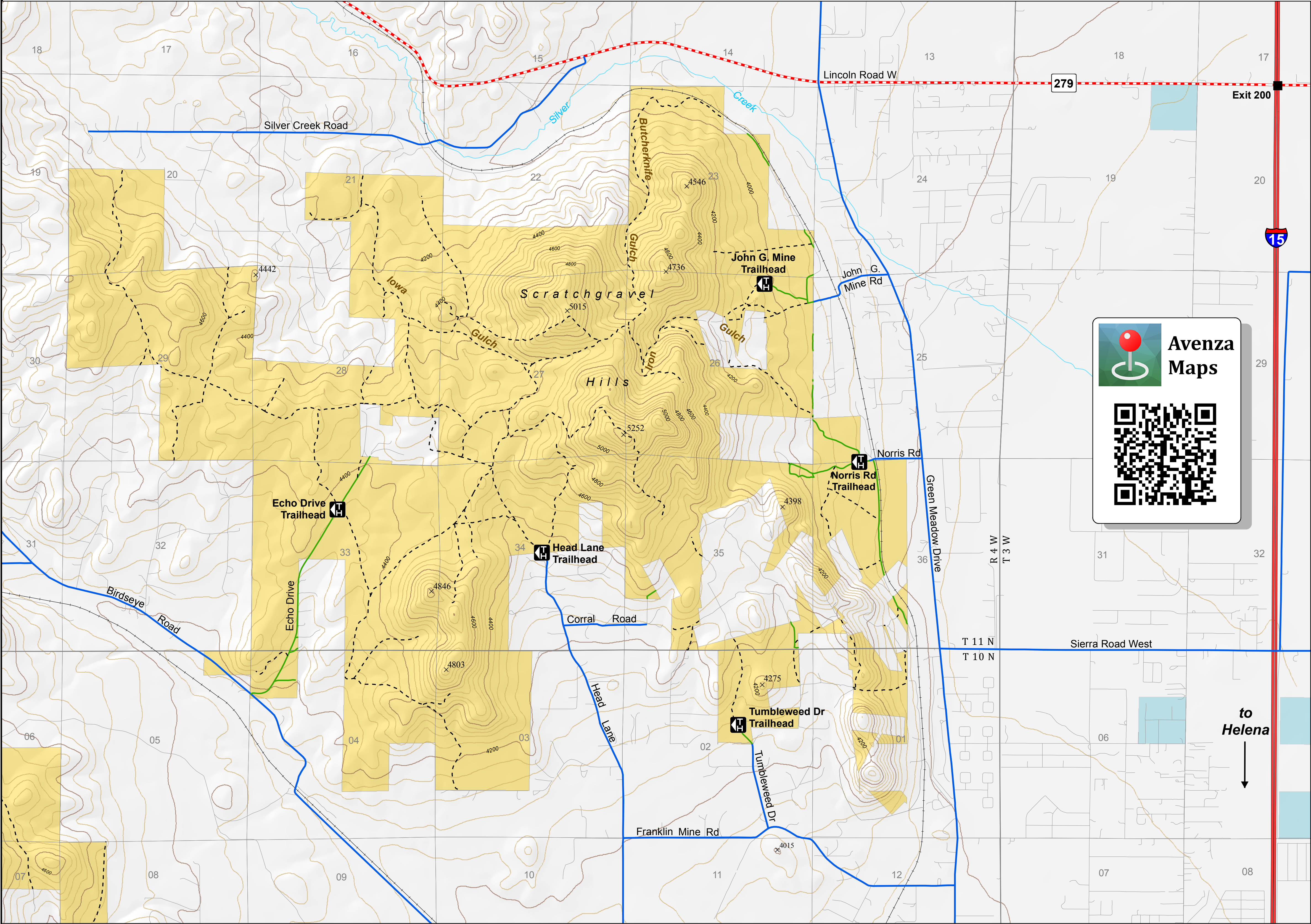


U.S. Department of the Interior
Bureau of Land Management

Scratchgravel Hills Recreation Area



BLM Butte Field Office
106 North Parkmont, Butte, MT | 406-533-7600



Trailhead

BLM Road Open Yearlong to Motorized Use

Non-Motorized Use Only

Public Access Route

Non-BLM Route

Interstate Highway

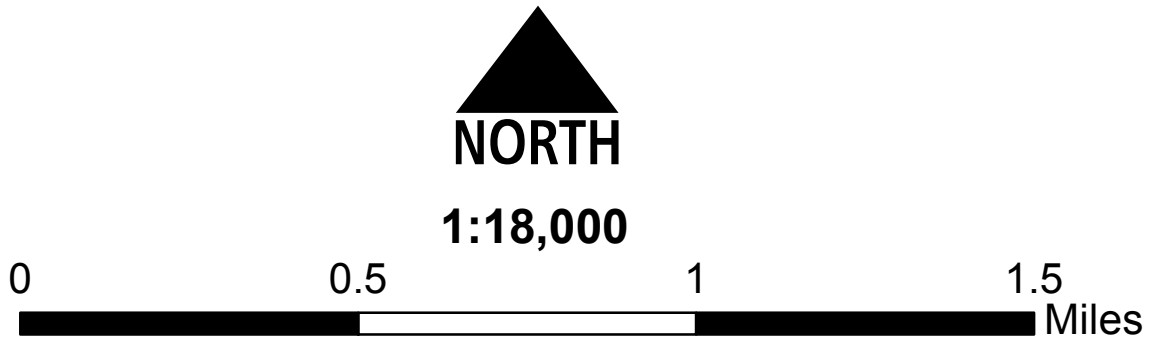
Other Highway

Rail Lines

BLM

State

Private



North American Datum 1983
UTM Projection, Zone 12
Elevation displayed in feet

Leave No Trace
Center for Outdoor Ethics | LNT.org

- Plan Ahead and Prepare
- Travel and Camp on Durable Surfaces
- Dispose of Waste Properly
- Leave What You Find
- Minimize Campfire Impacts
- Respect Wildlife
- Be Considerate of Other Visitors

Unless otherwise noted, all wheeled motorized travel on public lands is restricted to Designated Routes. Roads not shown on this map, which are found on BLM lands, are closed to all motorized travel.

Always seek private landowners' permission before using or crossing their lands.

For current land status, consult official records at Bureau of Land Management or U.S. Forest Service Offices.

This map is intended for display purposes only. No warranty is made by the Bureau of Land Management as to the accuracy, reliability, or completeness of these data sets for individual or aggregate use with other data, or for purposes not intended by the BLM. This map may not meet National Map Accuracy Standards. This product was developed through digital means and information may be updated without notification.