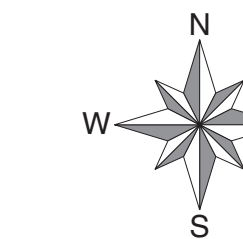


Renewable Energy Development Challenges & Opportunities on Lands with a Federal Interest^{1,2}



No warranty is made by the Bureau of Land Management as to the accuracy, reliability, or completeness of these data for individual or aggregate use with other data. Original data were compiled from various sources. The responsibility for final accuracy of these data rests with the user. The product was developed through digital means and may be updated without notification.

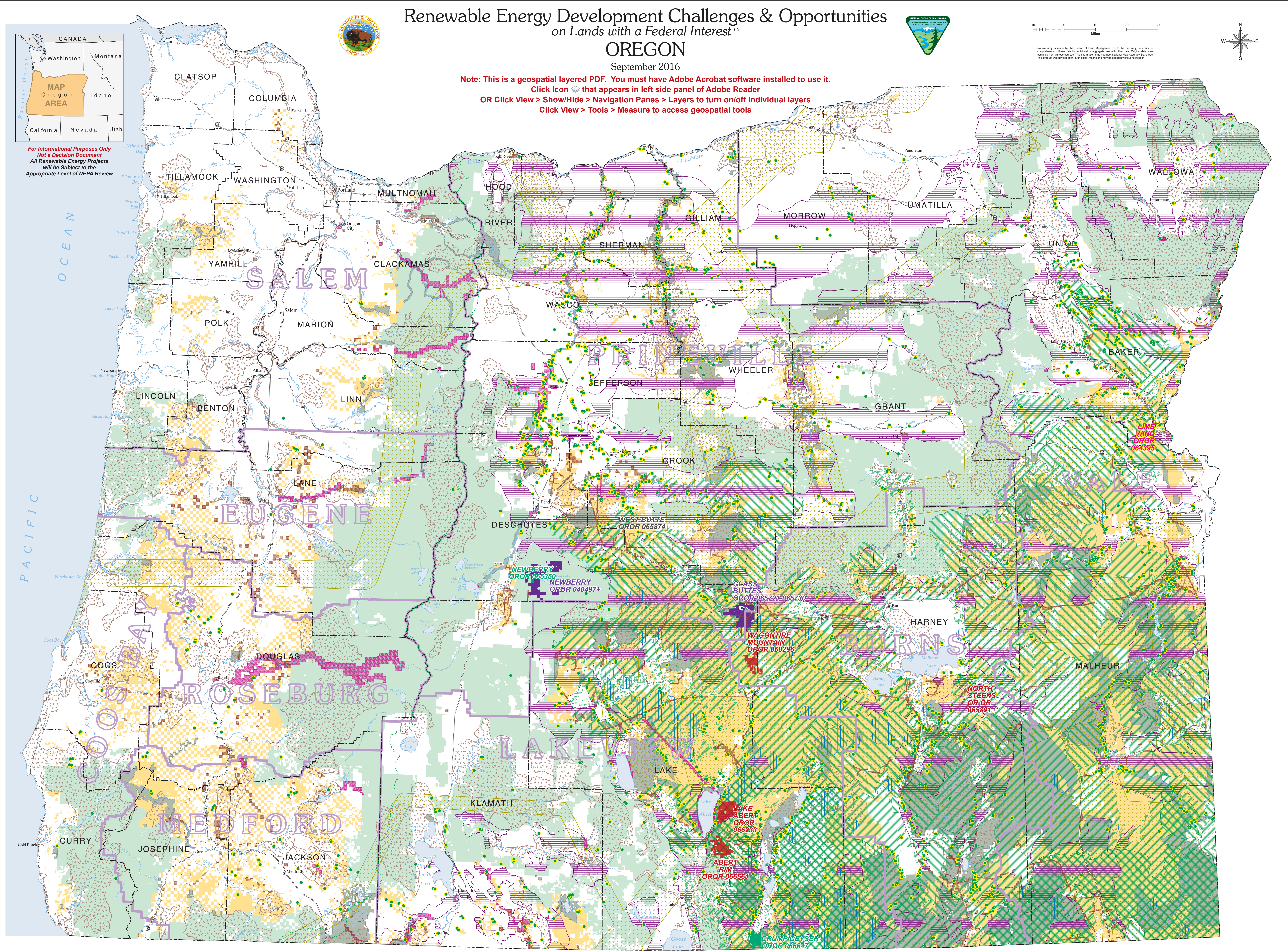
OREGON

September 2016

Note: This is a geospatial layered PDF. You must have Adobe Acrobat software installed to use it.
Click Icon that appears in left side panel of Adobe Reader
OR Click View > Show/Hide > Navigation Panes > Layers to turn on/off individual layers
Click View > Tools > Measure to access geospatial tools



For Informational Purposes Only
Not a Decision Document
All Renewable Energy Projects
will be Subject to the
Appropriate Level of NEPA Review



¹Excluding biomass and there are no solar projects at this time.
²Includes only those projects that have been officially entered into BLM's LR2000 land recordation system. That includes projects that are wholly on federal lands or partially on federal lands via a "connected action". Any project wholly on private lands is excluded, with the possible exception of split estates.

Legend

- Wind Testing Right-of-Way³
- Transmission Right-of-Way with BLM Interest
- FERC Hydro Energy Withdrawal with Federal Interest
- Authorized Geothermal Lease⁴
- Nominated Geothermal Parcel⁵
- Pygmy Rabbit Habitat
- Mule Deer Winter Range
- Sage-Grouse Priority Habitat Management Area (PHMA)⁷
- Sage-Grouse Priority Habitat Management Area (PHMA) in Sagebrush Focal Area (SFA)⁷
- Sage-Grouse General Habitat Management Area (GHMA)⁷
- Department of Defense Consultation Area
- ODFW Conservation Opportunity Area⁸
- BLM Special Emphasis Area⁹
- BLM Administered Land
- US Forest Service Administered Land

- ### Explanation of Legend Terminology
- ¹ **Operational Wind Farm** - Applicant has completed both the meteorological testing/feasibility and NEPA analysis. BLM has granted a wind development ROW authorizing the construction of a wind farm, applicant has completed construction of the wind turbines and is producing electricity.
 - ² **Connected Action ROW** for private wind farm - sometimes private wind farms need transmission line and/or other access across BLM lands to connect to the grid. By regulation (40 CFR 1508.25 (a)(1)), these projects are considered "connected actions" and therefore their impacts, even those originating on non-BLM lands, are included in the Right-of-Way (ROW) NEPA analysis.
 - ³ **Wind Testing ROW** - Applicant has applied for a wind testing ROW that, if granted by the BLM, would authorize the erection of meteorological anemometer towers to test wind speeds for a specified time period up to three years issued in accordance with Federal Regulations at 43 CFR 2800.
 - ⁴ **Authorized Geothermal Lease** - The BLM has issued a geothermal lease to the highest bidder after a competitive leasing process (43 CFR Subpart 3203), except for situations where noncompetitive leasing is allowed under 43 CFR Subparts 3204 and 3205.
 - ⁵ **Nominated Geothermal Parcel** - A qualified entity has nominated exact parcels of land they wish the BLM to offer in a future competitive lease sale by submitting an applicable BLM nomination form. See 43 CFR § 3203.3 (a)(1)(i) and § 3203.10.
 - ⁶ **Pending Geothermal Lease OROR 064517** - In 1983 a private party made a non-competitive offer to lease this 40-acre non-NGRA parcel, in the Mt. Hood National Forest, for geothermal development under the geothermal leasing regulations in effect at the time. At the same time, another private party made a non-competitive offer to lease five other parcels in the same area. Compelled by the Energy Policy Act of 2005, the U.S. Forest Service finally made an effort to do a "Consent to Lease" analysis for these pending lease offerings in 2008. They issued an affirmative decision on August 8, 2010. However, they overlooked the CHOP 064517 parcel in their analysis. This oversight was never resolved and has thus placed this parcel in pending geothermal lease limbo. The rules governing its disposition are found in 43 CFR 3204.13.
 - ⁷ **Sage-Grouse Priority Habitat Management Area (PHMA)** (SFA) - Sagebrush Focal Areas (SFA), which are a subset of PHMA, are recognized strongholds for sage-grouse having the highest bird densities and other criteria important for the persistence of the species. Sage-Grouse General Habitat Management Area (GHMA) is equivalent to ODFW Low Density Habitat (July 2011) plus Current Occupied Habitat (2008 lease by Curtsche, modified in 2010 to account for fire-degraded habitat), ODFW Greater Sage-grouse Core Area - Strategy was developed in 2005 and was updated and adopted by the Oregon Fish and Wildlife Commission in April 2011 (<http://www.dfw.state.or.us/wildlife/sagegrouse/>).
 - ⁸ **Conservation Opportunity Area** identified in the Oregon Conservation Strategy (<http://www.dfw.state.or.us/conservationstrategy/>)
 - ⁹ **BLM Special Emphasis Area** - Includes Wilderness, Wilderness Study Areas, Wild & Scenic Rivers, National Monuments, Cooperative Management and Protection Areas, Areas of Critical Environmental Concern, and Lands with Visual Resource Management (VRM) Classes I and II (Preserve or Retain Existing Character of Landscape).

*Data Caveats for Golden Eagle Nest Locations Through 2015

No warranty is made by the FWS as to the accuracy, reliability or completeness of these data for individual or aggregate use with other data. Original data were compiled from various sources. The information may not meet National Map Accuracy Standards. This project was developed through digital means and may be updated without notification.

Some locations (pre 2011) were gathered opportunistically or as part of local projects. Consequently, the absence of a location on the map does not mean that there is not a golden eagle nest in the area.

The nest use data (pre 2011) were not collected annually or following an accepted protocol. Golden eagle nest location data presented here is not intended for land use planning and analysis purposes.