

REDMOND CAVES

The Bureau of Land Management
Prineville District



WELCOME TO REDMOND CAVES!

In Central Oregon and need an outdoor fix? Just have an hour before you fly out from the airport? Come visit a small piece of public land that hosts a group of 5 caves formed by volcanic flows of molten lava from the Newberry Caldera. Enjoy the cool underground on a hot summer day and follow in the footsteps of Native Americans who used the caves over the last 6,000 years. Nestled inside Redmond's city limits, and managed in partnership with the City of Redmond, the caves offer a great way to take learn about geology, wildlife and past human use.



KNOW BEFORE YOU GO

- ✓ **OPEN YEAR ROUND** but leave only footprints and take nothing but pictures.
- ✓ **THE CAVES** are preserved in their natural state; take precautions to watch for rattlesnakes, bring multiple lights, wear sturdy shoes, take someone with you, and let others know where you're going.
- ✓ **PETS ARE NOT ALLOWED** in the caves.
- ✓ **NO TOILETS OR OTHER AMENITIES.** Firearm discharge, trapping and geocaching are not allowed.

DIRECTIONS

The Caves are located 0.8 miles south the Redmond Airport on SW Airport Way in Redmond, OR (between the airport and the Deschutes County Fairgrounds).
From Bend - Take State Highway 97 north to Redmond to Exit 24 at SW Airport Way. Head east toward the Redmond Airport and travel about 1 mile to the parking lot on the north side of Airport Way.



CONTACT INFO

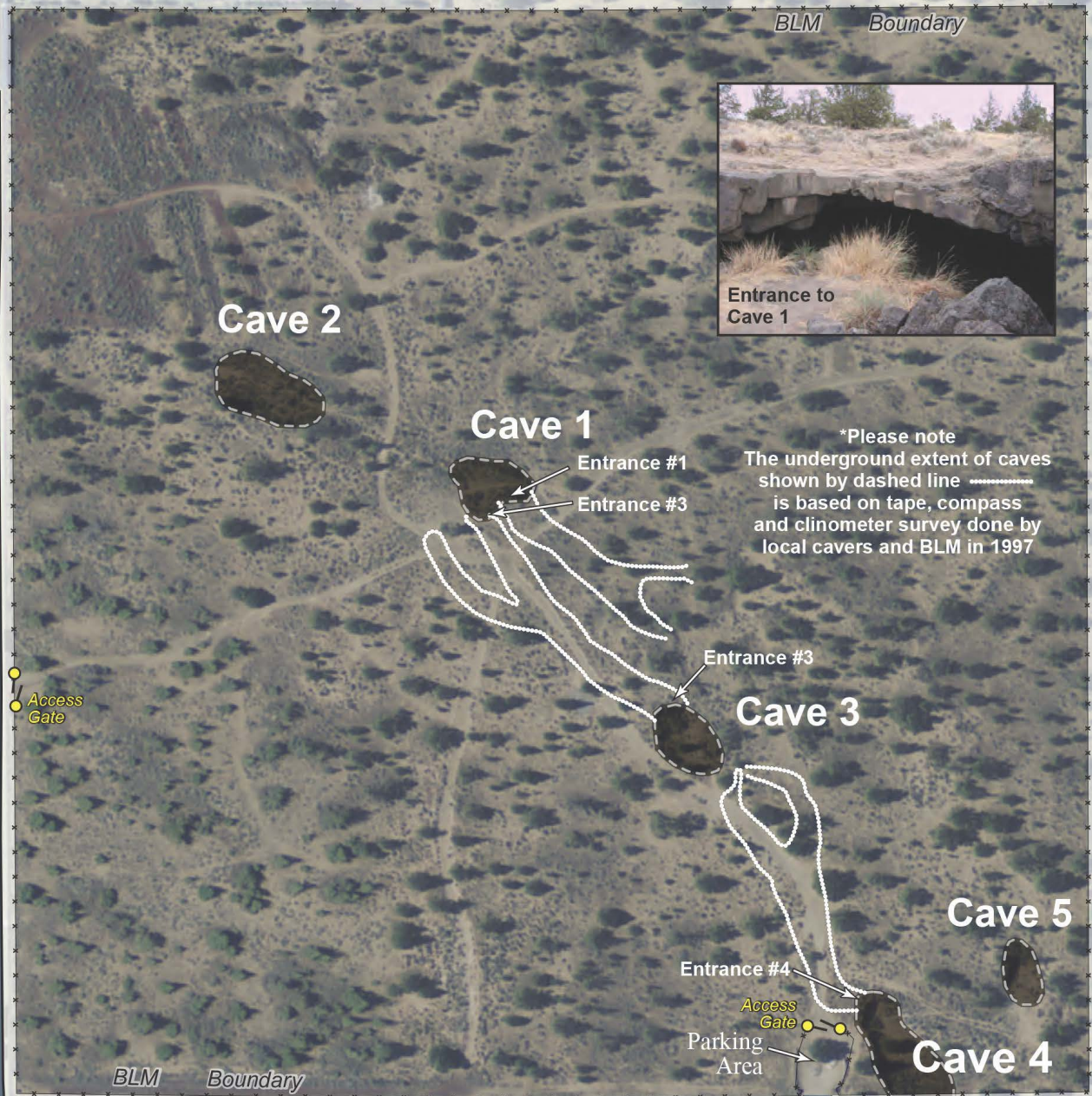
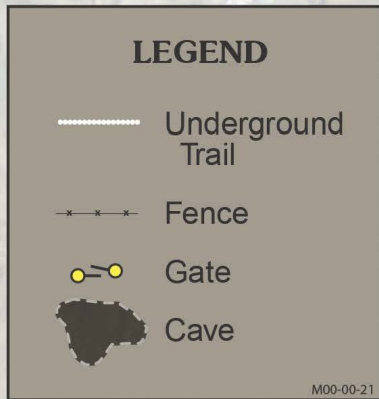
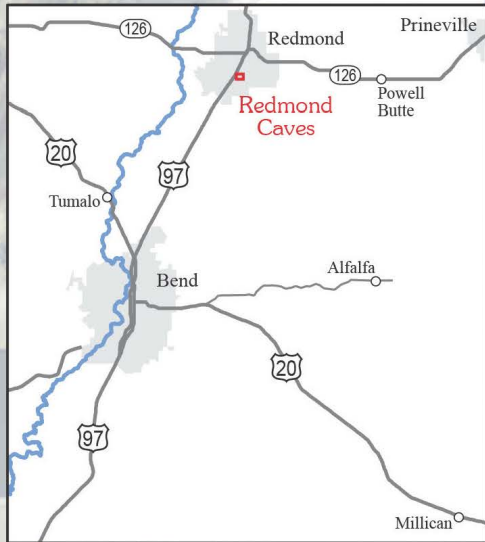


3050 N.E. 3rd St.
Prineville, OR 97754
541-416-6700
BLM_OR_PR_Mail@blm.gov

POINT OF INTEREST

A single lava tube collapsed, creating 5 caves and giving you an easy place to explore. It's time to get up close and personal with Central Oregon's unique geology!

REDMOND CAVES



*Please note
The underground extent of caves shown by dashed line ----- is based on tape, compass and clinometer survey done by local cavers and BLM in 1997