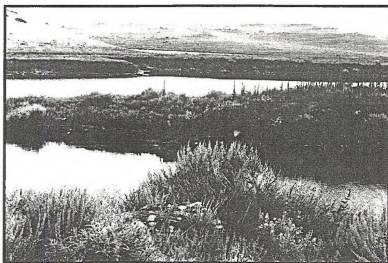




**Standards for
Healthy Rangelands
and
Guidelines for
Livestock Grazing
Management**
for
**Public Lands Administered by the
Bureau of Land Management in the
State of Wyoming**



August 12, 1997



SF
85.35
.W8
L362
1997
c.2

BLM LIBRARY
RS 150A BLDG. 50
DENVER FEDERAL CENTER
P.O. BOX 25047
DENVER, CO 80225

44564791

FD 88031749

SF
8535

.W8

L362

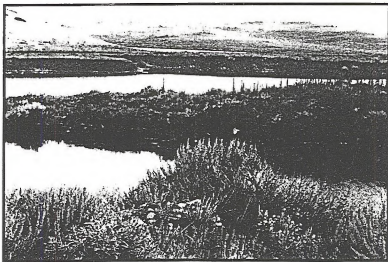
1997

C.2

BLM LIBRARY
RS 150A BLDG. 50
DENVER FEDERAL CENTER
P.O. BOX 25047
DENVER, CO 80225

Standards for Healthy Rangelands and Guidelines for Livestock Grazing Management

for
Public Lands Administered by the
Bureau of Land Management in the
State of Wyoming



August 12, 1997



BLM LIBRARY
RS 150A BLDG. 50
DENVER FEDERAL CENTER
P.O. BOX 25047
DENVER, CO 80225



United States Department of the Interior

BUREAU OF LAND MANAGEMENT
Wyoming State Office
P.O. Box 1828
Cheyenne, Wyoming 82005-1828

Dear Interested Citizen:

It is with a great deal of satisfaction that I present this booklet of standards for healthy rangelands and guidelines for livestock grazing management on BLM land in Wyoming. This culmination of months of hard work involving many of you was approved by the Secretary of the Interior August 12, 1997.

This work incorporates elements provided by the Wyoming Resource Advisory Council, the State of Wyoming, our own staff, and those of you who attended our open houses or provided written comments. It also meets the requirements specified in Federal regulations. This work represents the insight and cooperation of many people. As such, I recognize you may not feel entirely comfortable with every element of the document. However, I am confident that it portrays a policy we can all live with and successfully implement.

Where do we go from here? The first step will be to assess the health of BLM grazing allotments across the State. If the rangeland meets the standards, no further action is necessary. If one or more of the standards is not being met, due wholly or in part to grazing practices, the corresponding grazing guidelines will be used to develop management actions to improve the rangeland.

I wish to thank everyone associated with this worthwhile project.

Sincerely,

Alan R. Pierson
State Director

INTRODUCTION

According to the Department of the Interior's final rule for grazing administration, effective August 21, 1995, the Wyoming Bureau of Land Management (BLM) State Director is responsible for the development of standards for healthy rangelands and guidelines for livestock grazing management on 18 million acres of Wyoming's public rangelands. The development and application of these standards and guidelines are to achieve the four fundamentals of rangeland health outlined in the grazing regulations (43 CFR 4180.1). Those four fundamentals are: (1) watersheds are functioning properly; (2) water, nutrients, and energy are cycling properly; (3) water quality meets State standards; and (4) habitat for special status species is protected.

Standards address the health, productivity, and sustainability of the BLM administered public rangelands and represent the minimum acceptable conditions for the public rangelands. The standards apply to all resource uses on public lands. Their application will be determined as use-specific guidelines are developed. Standards are synonymous with goals and are observed on a landscape scale. They describe healthy rangelands rather than important rangeland by-products. The achievement of a standard is determined by observing, measuring, and monitoring appropriate indicators. An indicator is a component of a system whose characteristics (e.g., presence, absence, quantity, and distribution) can be observed, measured, or monitored based on sound scientific principles.

Guidelines provide for, and guide the development and implementation of, reasonable, responsible, and cost-effective management practices at the grazing allotment and watershed level. The guidelines in this document apply specifically to livestock grazing management practices on the BLM administered public lands. These management practices will either maintain existing desirable conditions or move rangelands toward statewide standards within reasonable timeframes. Appropriate guidelines will ensure that the resultant management practices reflect the potential for the watershed, consider other uses and natural influences, and balance resource goals with social, cultural/historic, and economic opportunities to sustain viable local communities. Guidelines, like standards, apply statewide.

Implementation of the Wyoming standards and guidelines will generally be done in the following manner: Grazing allotments or

groups of allotments in a watershed will be reviewed based on the BLM's current allotment categorization and prioritization process. Allotments with existing management plans and high-priority allotments will be reviewed first. Lower priority allotments will be reviewed as time allows or when it becomes necessary for BLM to review the permit/lease for other reasons such as permit/lease transfers, permittee/lessee requests for change in use, etc. The permittees and interested publics will be notified when allotments are scheduled for review and encouraged to participate in the review. The review will first determine if an allotment meets each of the six standards. If it does, no further action will be necessary. If any of the standards aren't being met, then rationale explaining the contributing factors will be prepared. If livestock grazing practices are found to be among the contributing factors, corrective actions consistent with the guidelines will be developed and implemented before the next grazing season in accordance with 43 CFR 4180. If a lack of data prohibits the reviewers from determining if a standard is being met, then a strategy will be developed to acquire the data in a timely manner.

On a continuing basis, the Standards for Healthy Rangelands will direct on-the-ground management on the public lands. They will serve to focus the on-going development and implementation of activity plans toward the maintenance or the attainment of healthy rangelands.

Quantifiable resource objectives and specific management practices to maintain or achieve the standards will be developed at the local BLM District and Resource Area levels and will consider all reasonable and practical options available to achieve desired results on a watershed or grazing allotment scale. The objectives shall be reflected in site-specific activity or implementation plans as well as in livestock grazing permits/leases for the public lands. These objectives and practices may be developed formally or informally through mechanisms available and suited to local needs (such as Coordinated Resource Management (CRM) efforts).

The development and implementation of standards and guidelines will enable on-the-ground management of the public rangelands to maintain a clear and responsible focus on both the health of the land and its dependent natural and human communities. This development and implementation will ensure that any mechanisms currently being employed or that may be developed in the future will maintain a consistent focus on these essential concerns. This development and implementation will also enable immediate attention to be brought to bear on existing resource concerns.

These standards and guidelines are compatible with BLM's three-tiered land use planning process. The first tier includes the laws, regulations, and policies governing BLM's administration and management of the public lands and their uses. The previously mentioned fundamentals of rangeland health specified in 43 CFR 4180.1, the requirement for BLM to develop these State (or regional) standards and guidelines, and the standards and guidelines themselves, are part of this first tier. Also part of this first tier are the specific requirements of various Federal laws and the objectives of 43 CFR 4100.2 that require BLM to consider the social and economic well-being of the local communities in its management process.

These standards and guidelines will provide for statewide consistency and guidance in the preparation, amendment, and maintenance of BLM land use plans, which represent the second tier of the planning process. The BLM land use plans provide general allocation decisions concerning the kinds of resource and land uses that can occur on the BLM administered public lands, where they can occur, and the types of conditional requirements under which they can occur. In general, the standards will be the basis for development of planning area-specific management objectives concerning rangeland health and productivity, and the guidelines will direct development of livestock grazing management actions to help accomplish those objectives.

The third tier of the BLM planning process, activity or implementation planning, is directed by the applicable land use plan and, therefore, by the standards and guidelines. The standards and guidelines, as BLM statewide policy, will also directly guide development of the site-specific objectives and the methods and practices used to implement the land use plan decisions. Activity or implementation plans contain objectives which describe the site-specific conditions desired. Grazing permits/leases for the public lands contain terms and conditions which describe specific actions required to attain or maintain the desired conditions. Through monitoring and evaluation, the BLM, grazing permittees, and other interested parties determine if progress is being made to achieve activity plan objectives.

Wyoming rangelands support a variety of uses which are of significant economic importance to the State and its communities. These uses include oil and gas production, mining, recreation and tourism, fishing, hunting, wildlife viewing, and livestock grazing. Rangelands also provide amenities which contribute to the quality

of life in Wyoming such as open spaces, solitude, and opportunities for personal renewal. Wyoming's rangelands should be managed with consideration of the State's historical, cultural, and social development and in a manner which contributes to a diverse, balanced, competitive, and resilient economy in order to provide opportunity for economic development. Healthy rangelands can best sustain these uses.

To varying degrees, BLM management of the public lands and resources plays a role in the social and economic well-being of Wyoming communities. The National Environmental Policy Act (part of the above-mentioned first planning tier) and various other laws and regulations mandate the BLM to analyze the socioeconomic impacts of actions occurring on public rangelands. These analyses occur during the environmental analysis process of land use planning (second planning tier), where resource allocations are made, and during the environmental analysis process of activity or implementation planning (third planning tier). In many situations, factors that affect the social and economic well-being of local communities extend far beyond the scope of BLM management or individual public land users' responsibilities. In addition, since standards relate primarily to physical and biological features of the landscape, it is very difficult to provide measurable socioeconomic indicators that relate to the health of rangelands. It is important that standards be realistic and within the control of the land manager and users to achieve.

STANDARDS FOR HEALTHY PUBLIC RANGELANDS

STANDARD #1

Within the potential of the ecological site (soil type, landform, climate, and geology), soils are stable and allow for water infiltration to provide for optimal plant growth and minimal surface runoff.

THIS MEANS THAT:

The hydrologic cycle will be supported by providing for water capture, storage, and sustained release. Adequate energy flow and nutrient cycling through the system will be achieved as optimal plant growth occurs. Plant communities are highly varied within Wyoming.

INDICATORS MAY INCLUDE BUT ARE NOT LIMITED TO:

- Water infiltration rates;
- Soil compaction;
- Erosion (rills, gullies, pedestals, capping);
- Soil micro-organisms;
- Vegetative cover (gully bottoms and slopes); and
- Bare ground and litter.

The above indicators are applied as appropriate to the potential of the ecological site.

STANDARD #2

Riparian and wetland vegetation has structural, age, and species diversity characteristic of the stage of channel succession and is resilient and capable of recovering from natural and human disturbance in order to provide forage and cover, capture sediment, dissipate energy, and provide for ground water recharge.

THIS MEANS THAT:

Wyoming has highly varied riparian and wetland systems on public lands. These systems vary from large rivers to small streams and from springs to large wet meadows. These systems are in various stages of natural cycles and may also reflect other disturbance that is either localized or widespread throughout the watershed. Riparian vegetation captures sediments and associated materials, thus enhancing the nutrient cycle by capturing and utilizing nutrients that would otherwise move through a system unused.

INDICATORS MAY INCLUDE BUT ARE NOT LIMITED TO:

- Erosion and deposition rate;
- Channel morphology and flood plain function;
- Channel succession and erosion cycle;
- Vegetative cover;
- Plant composition and diversity (species, age class, structure, successional stages, desired plant community, etc.);
- Bank stability;
- Woody debris and instream cover; and
- Bare ground and litter.

The above indicators are applied as appropriate to the potential of the ecological site.

STANDARD #3

Upland vegetation on each ecological site consists of plant communities appropriate to the site which are resilient, diverse, and able to recover from natural and human disturbance.

THIS MEANS THAT:

In order to maintain desirable conditions and/or recover from disturbance within acceptable timeframes, plant communities must have the components present to support the nutrient cycle and adequate energy flow. Plants depend on nutrients in the soil and energy derived from sunlight. Nutrients stored in the soil are used over and over by plants, animals, and micro organisms. The amount of nutrients available and the speed with which they cycle among plants, animals, and the soil are fundamental components of rangeland health. The amount, timing, and distribution of energy captured through photosynthesis are fundamental to the function of rangeland ecosystems.

INDICATORS MAY INCLUDE BUT ARE NOT LIMITED TO:

- Vegetative cover;
- Plant composition and diversity (species, age class, structure, successional stages, desired plant community, etc.);
- Bare ground and litter;
- Erosion (rills, gullies, pedestals, capping); and
- Water infiltration rates.

The above indicators are applied as appropriate to the potential of the ecological site.

STANDARD #4

Rangelands are capable of sustaining viable populations and a diversity of native plant and animal species appropriate to the habitat. Habitats that support or could support threatened species, endangered species, species of special concern, or sensitive species will be maintained or enhanced.

THIS MEANS THAT:

The management of Wyoming rangelands will achieve or maintain adequate habitat conditions that support diverse plant and animal species. These may include listed threatened or endangered species (U.S. Fish and Wildlife-designated), species of special concern (BLM-designated), and other sensitive species (State of Wyoming-designated). The intent of this standard is to allow the listed species to recover and be delisted, and to avoid or prevent additional species becoming listed.

INDICATORS MAY INCLUDE BUT ARE NOT LIMITED TO:

- Noxious weeds;
- Species diversity;
- Age class distribution;
- All indicators associated with the upland and riparian standards;
- Population trends; and
- Habitat fragmentation.

The above indicators are applied as appropriate to the potential of the ecological site.

STANDARD #5

Water quality meets State standards.

THIS MEANS THAT:

The State of Wyoming is authorized to administer the Clean Water Act. BLM management actions or use authorizations will comply with all Federal and State water quality laws, rules and regulations to address water quality issues that originate on public lands. Provisions for the establishment of water quality standards are included in the Clean Water Act, as amended, and the Wyoming Environmental Quality Act, as amended. Regulations are found in Part 40 of the Code of Federal Regulations and in *Wyoming's Water Quality Rules and Regulations*. The latter regulations contain Quality Standards for Wyoming Surface Waters.

Natural processes and human actions influence the chemical, physical, and biological characteristics of water. Water quality varies from place to place with the seasons, the climate, and the kind substrate through which water moves. Therefore, the assessment of water quality takes these factors into account.

INDICATORS MAY INCLUDE BUT ARE NOT LIMITED TO:

- Chemical characteristics (e.g., pH, conductivity, dissolved oxygen);
- Physical characteristics (e.g., sediment, temperature, color); and
- Biological characteristics (e.g., macro- and micro-invertebrates, fecal coliform, and plant and animal species).

STANDARD #6

Air quality meets State standards.

THIS MEANS THAT:

The State of Wyoming is authorized to administer the Clean Air Act. BLM management actions or use authorizations will comply with all Federal and State air quality laws, rules, regulations and standards. Provisions for the establishment of air quality standards are included in the Clean Air Act, as amended, and the Wyoming Environmental Quality Act, as amended. Regulations are found in Part 40 of the Code of Federal Regulations and in *Wyoming Air Quality Standards and Regulations*.

INDICATORS MAY INCLUDE BUT ARE NOT LIMITED TO:

- Particulate matter;
- Sulfur dioxide;
- Photochemical oxidants (ozone);
- Volatile organic compounds (hydrocarbons);
- Nitrogen oxides;
- Carbon monoxide;
- Odors; and
- Visibility.

BLM WYOMING GUIDELINES FOR LIVESTOCK GRAZING MANAGEMENT

1. Timing, duration, and levels of authorized grazing will ensure that adequate amounts of vegetative ground cover, including standing plant material and litter, remain after authorized use to support infiltration, maintain soil moisture storage, stabilize soils, allow the release of sufficient water to maintain system function, and to maintain subsurface soil conditions that support permeability rates and other processes appropriate to the site.
2. Grazing management practices will restore, maintain, or improve riparian plant communities. Grazing management strategies consider hydrology, physical attributes, and potential for the watershed and the ecological site. Grazing management will maintain adequate residual plant cover to provide for plant recovery, residual forage, sediment capture, energy dissipation, and ground water recharge.
3. Range improvement practices (instream structures, fences, water troughs, etc.) in and adjacent to riparian areas will ensure that stream channel morphology (e.g., gradient, width/depth ratio, channel roughness and sinuosity) and functions appropriate to climate and landform are maintained or enhanced. The development of springs, seeps, or other projects affecting water and associated resources shall be designed to protect the ecological and hydrological functions, wildlife habitat, and significant cultural, historical, and archaeological values associated with the water source. Range improvements will be located away from riparian areas if they conflict with achieving or maintaining riparian function.
4. Grazing practices that consider the biotic communities as more than just a forage base will be designed in order to ensure that the appropriate kinds and amounts of soil organisms, plants, and animals to support the hydrologic cycle, nutrient cycle, and energy flow are maintained or enhanced.
5. Continuous season-long or other grazing management practices that hinder the completion of plants' life-sustaining reproductive and/or nutrient cycling processes will be modified to ensure

adequate periods of rest at the appropriate times. The rest periods will provide for seedling establishment or other necessary processes at levels sufficient to move the ecological site condition toward the resource objective and subsequent achievement of the standard.

6. Grazing management practices and range improvements will adequately protect vegetative cover and physical conditions and maintain, restore, or enhance water quality to meet resource objectives. The effects of new range improvements (water developments, fences, etc.) on the health and function of rangelands will be carefully considered prior to their implementation.
7. Grazing management practices will incorporate the kinds and amounts of use that will restore, maintain, or enhance habitats to assist in the recovery of Federal threatened and endangered species or the conservation of federally-listed species of concern and other State-designated special status species. Grazing management practices will maintain existing habitat or facilitate vegetation change toward desired habitats. Grazing management will consider threatened and endangered species and their habitats.
8. Grazing management practices and range improvements will be designed to maintain or promote the physical and biological conditions necessary to sustain native animal populations and plant communities. This will involve emphasizing native plant species in the support of ecological function and incorporating the use of non-native species only in those situations in which native plant species are not available in sufficient quantities or are incapable of maintaining or achieving properly functioning conditions and biological health.
9. Grazing management practices on uplands will maintain desired plant communities or facilitate change toward desired plant communities.

DEFINITIONS

ACTIVITY PLANS

Allotment Management Plans (AMPs), Habitat Management Plans (HMPs), Watershed Management Plans (WMPs), Wild Horse Management Plans (WHMPs), and other plans developed at the local level to address specific concerns and accomplish specific objectives.

COORDINATED RESOURCE MANAGEMENT (CRM)

A group of people working together to develop common resource goals and resolve natural resource concerns. CRM is a people process that strives for win-win situations through consensus-based decisionmaking.

DESIRED PLANT COMMUNITY

A plant community which produces the kind, proportion, and amount of vegetation necessary for meeting or exceeding the land use plan/activity plan objectives established for an ecological site(s). The desired plant community must be consistent with the site's capability to produce the desired vegetation through management, land treatment, or a combination of the two.

ECOLOGICAL SITE

An area of land with specific physical characteristics that differs from other areas both in its ability to produce distinctive kinds and amounts of vegetation and in its response to management.

EROSION

(v.) Detachment and movement of soil or rock fragments by water, wind, ice, or gravity. (n.) The land surface worn away by running water, wind, ice, or other geological agents, including such processes as gravitational creep.

GRAZING MANAGEMENT PRACTICES

Grazing management practices include such things as grazing systems (rest-rotation, deferred rotation, etc.), timing and duration of grazing, herding, salting, etc. They do not include physical range improvements.

GUIDELINES (For Grazing Management)

Guidelines provide for, and guide the development and implementation of, reasonable, responsible, and cost-effective management actions at the allotment and watershed level which move rangelands toward statewide standards or maintain existing desirable conditions. Appropriate guidelines will ensure that the resultant management actions reflect the potential for the watershed, consider other uses and natural influences, and balance resource goals with social, cultural/historic, and economic opportunities to sustain viable local communities. Guidelines, and therefore, the management actions they engender, are based on sound science, past and present management experience, and public input.

INDICATOR

An indicator is a component of a system whose characteristics (e.g., presence, absence, quantity, and distribution) can be observed, measured, or monitored based on sound scientific principles. An indicator can be evaluated at a site- or species-specific level. Monitoring of an indicator must be able to show change within timeframes acceptable to management and be capable of showing how the health of the ecosystem is changing in response to specific management actions. Selection of the appropriate indicators to be observed, measured, or monitored in a particular allotment is a critical aspect of early communication among the interests involved on-the-ground. The most useful indicators are those for which change or trend can be easily quantified and for which agreement as to the significance of the indicator is broad based.

LITTER

The uppermost layer of organic debris on the soil surface, essentially the freshly fallen or slightly decomposed vegetal material.

MANAGEMENT ACTIONS

Management actions are the specific actions prescribed by the BLM to achieve resource objectives, land use allocations, or other program or multiple use goals. Management actions include both grazing management practices and range improvements.

OBJECTIVE

An objective is a site-specific statement of a desired rangeland condition. It may contain either or both qualitative elements and quantitative elements. Objectives frequently speak to change. They are the focus of monitoring and evaluation activities at the local level. Monitoring of the indicators would show negative changes or positive changes. Objectives should focus on indicators of greatest interest for the area in question.

RANGE IMPROVEMENTS

Range improvements include such things as corrals, fences, water developments (reservoirs, spring developments, pipelines, wells, etc.) and land treatments (prescribed fire, herbicide treatments, mechanical treatments, etc.).

RANGELAND

Land on which the native vegetation (climax or natural potential) is predominantly grasses, grass-like plants, forbs, or shrubs. This includes lands revegetated naturally or artificially when routine management of that vegetation is accomplished mainly through manipulation of grazing. Rangelands include natural grasslands, savannas, shrublands, most deserts, tundra, alpine communities, coastal marshes, and wet meadows.

RANGELAND HEALTH

The degree to which the integrity of the soil and ecological processes of rangeland ecosystems are sustained.

RIPARIAN

An area of land directly influenced by permanent water. It has visible vegetation or physical characteristics reflective of permanent water influence. Lakeshores and streambanks are typical riparian areas. Excluded are such sites as ephemeral streams or washes that do not have vegetation dependent on free water in the soil.

STANDARDS

Standards are synonymous with goals and are observed on a landscape scale. Standards apply to rangeland health and not to the important by-products of healthy rangelands. Standards relate to the current capability or realistic potential of a specific site to produce these by-products, not to the presence or absence of the products themselves. It is the sustainability of the processes, or rangeland health, that produces these by-products.

TERMS AND CONDITIONS

Terms and conditions are very specific land use requirements that are made a part of the land use authorization in order to assure maintenance or attainment of the standard. Terms and conditions may incorporate or reference the appropriate portions of activity plans (e.g., Allotment Management Plans). In other words, where an activity plan exists that contains objectives focused on meeting the standards, compliance with the plan may be the only term and condition necessary in that allotment.

UPLAND

Those portions of the landscape which do not receive additional moisture for plant growth from run-off, streamflow, etc. Typically these are hills, ridgetops, valley slopes, and rolling plains.

Notes

BLM/WY/AE-97-023+1020



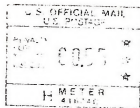
Printed on recycled paper.

BLM LIBRARY
RS 150A BLDG. 50
DENVER FEDERAL CENTER
P.O. BOX 25047
DENVER, CO 80225

UNITED STATES
DEPARTMENT OF THE INTERIOR

BUREAU OF LAND MANAGEMENT
5353 YELLOWSTONE ROAD
P.O. BOX 1828
CHEYENNE, WYOMING 82003

OFFICIAL BUSINESS
PENALTY FOR PRIVATE USE, \$300



Bureau of Land Management
Library, SC-324A, DFC, Bldg. 50
P.O. Box 25047
Denver, CO 80225-0047

80225-0047

