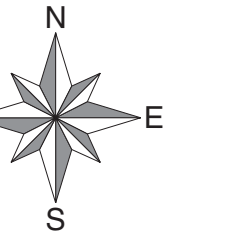
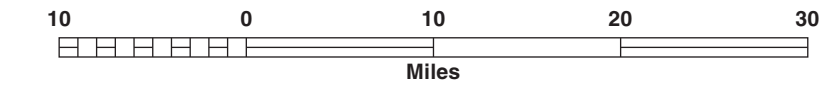


Non-Renewable Energy Development Challenges & Opportunities on Lands with a Federal Interest¹

OREGON

September 2016

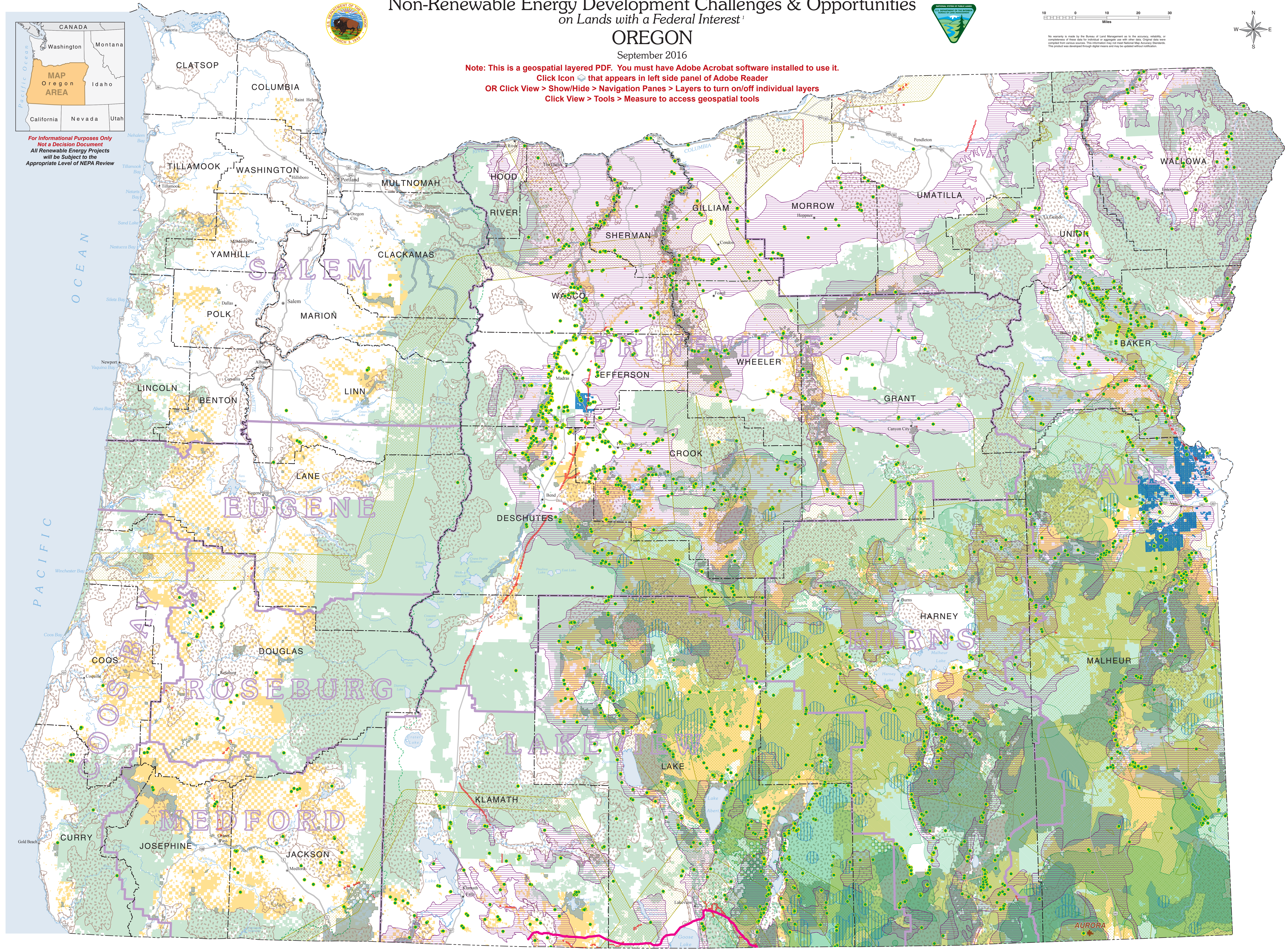


No warranty is made by the Bureau of Land Management as to the accuracy, reliability, or completeness of these data for individual or aggregate use with other data. Original data were compiled from various sources. The responsibility for final map accuracy rests with the user. The product was developed through digital means and may be updated without notification.

Note: This is a geospatial layered PDF. You must have Adobe Acrobat software installed to use it.
Click Icon that appears in left side panel of Adobe Reader
OR Click View > Show/Hide > Navigation Panes > Layers to turn on/off individual layers
Click View > Tools > Measure to access geospatial tools



For Informational Purposes Only
Not a Decision Document
All Renewable Energy Projects
will be Subject to the
Appropriate Level of NEPA Review



¹Includes only those projects that have been officially entered into BLM's LR2000 land recordation system. That includes projects that are wholly on federal lands or partially on federal lands via a "connected action". Any project wholly on private lands is excluded, with the possible exception of split estates. There are no current federal connections with the Mist Gas Field or the Coos Basin Area of Mutual Interest.

Legend

- County Seat
- Golden Eagle Nest Location through 2015^{*}
- Interstate Highway
- Federal Highway
- Pacific Crest National Scenic Trail
- State Boundary
- County Boundary
- BLM District Boundary
- Pipelines**
- Ruby
- Pipeline Right-of-Way¹
- Uranium Mining Site
- Authorized Oil & Gas Lease²
- Pygmy Rabbit Habitat
- Mule Deer Winter Range
- Sage-Grouse Priority Habitat Management Area (PHMA)³
- Sage-Grouse Priority Habitat Management Area (PHMA) in Sagebrush Focal Area (SFA)³
- Sage-Grouse General Habitat Management Area (GHMA)³
- Department of Defense Consultation Area
- ODFW Conservation Opportunity Area⁴
- BLM Special Emphasis Area⁵
- BLM Administered Land
- US Forest Service Administered Land

Explanation of Legend Terminology

- ¹ Pipeline Right-of-Way (ROW) issued in accordance with Federal regulations at 43 CFR 2800
- ² Oil & Gas Lease issued in accordance with Federal regulations at 43 CFR Subpart 3132
- ³ Sage-Grouse Priority Habitat Management Area (PHMA) is equivalent to ODFW Core Habitat (July 2011). Sagebrush Focal Areas (SFA), which are a subset of PHMA, are recognized strongholds for sage-grouse having the highest bird densities and other criteria important for the persistence of the species. Sage-Grouse General Habitat Management Area (GHMA) is equivalent to ODFW Low Density Habitat (July 2011) plus Current Occupied Habitat (2006 base by Dursche, modified in 2010 to account for fire-degraded habitat). ODFW Greater Sage-grouse Core Area - Strategy was developed in 2005 and was updated and adopted by the Oregon Fish and Wildlife Commission in April 2011 (<http://www.dfw.state.or.us/wildlife/sagegrouse/>).
- ⁴ Conservation Opportunity Area identified in the Oregon Conservation Strategy (<http://www.dfw.state.or.us/conservationstrategy/>)
- ⁵ BLM Special Emphasis Area - Includes Wilderness, Wilderness Study Areas, Wild & Scenic Rivers, National Monuments, Cooperative Management and Protection Areas, Areas of Critical Environmental Concern, and Lands with Visual Resource Management (VRM) Classes I and II (Preserve or Retain Existing Character of Landscape)

The BLM provides this map of potential non-renewable energy development information and key regional natural resource information in Oregon to foster collaborative solutions in the planning and siting of infrastructure projects on public lands.

*Data Caveats for Golden Eagle Nest Locations Through 2015

No warranty is made by the FWS as to the accuracy, reliability or completeness of these data for individual or aggregate use with other data. Original data were compiled from various sources. The information may not meet National Map Accuracy Standards. This project was developed through digital means and may be updated without notification.

Some locations (pre 2011) were gathered opportunistically or as part of local projects. Consequently, the absence of a location on the map does not mean that there is not a golden eagle nest in the area.

The nest use data (pre 2011) were not collected annually or following an accepted protocol. Golden eagle nest location data presented here is not intended for land use planning and analysis purposes.