



# Attachment A1: Map 1

## Legend

- TMA Boundary

Field Office Bdry

US Highways

State Highways
- Bureau of Land Management (BLM)

BLM Wilderness Area

Wilderness Study Area

Indian Reservation (IR)
- Military Reservations and Corps of Engineers

National Park Service (NPS)

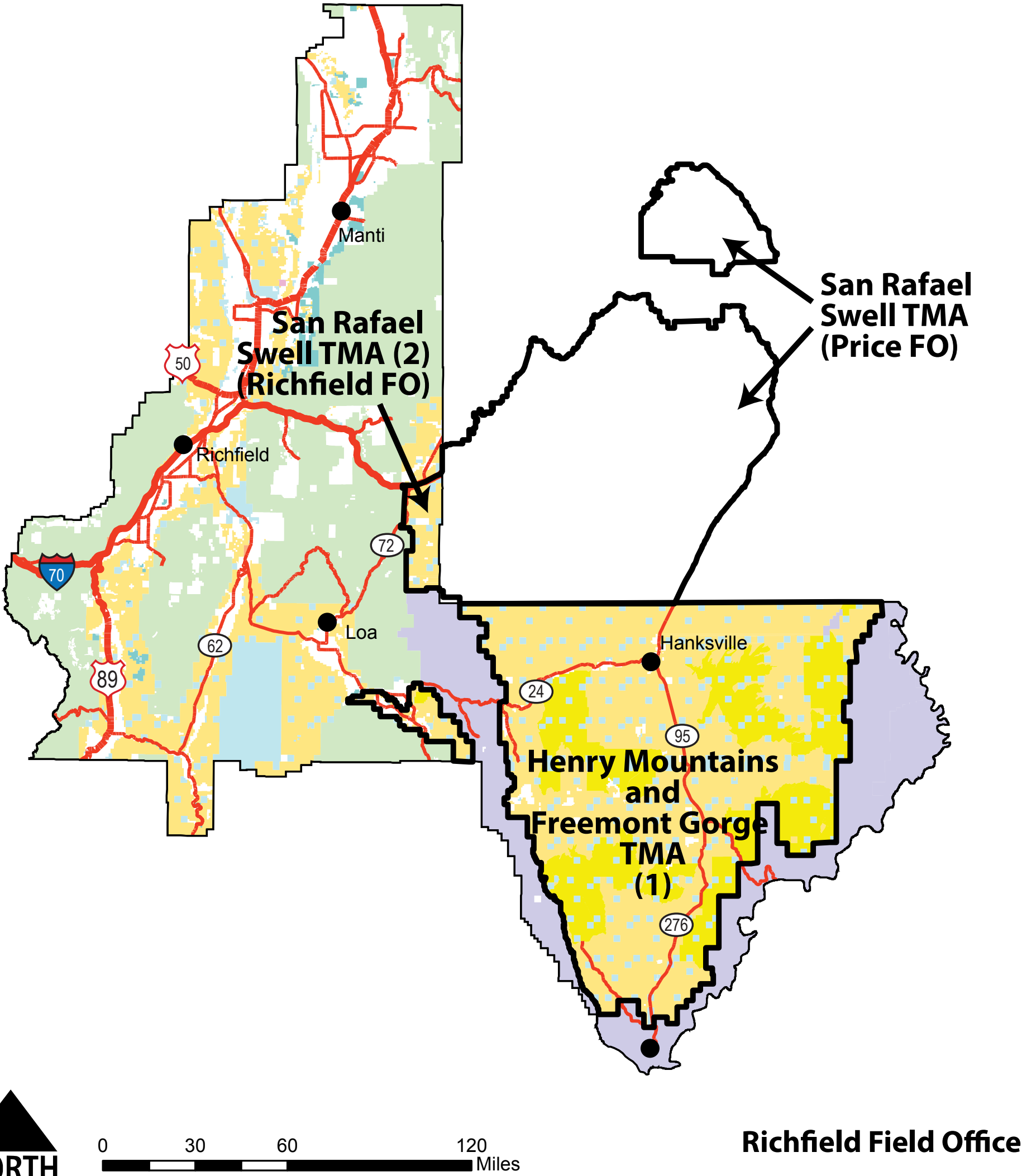
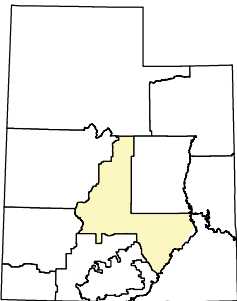
Private

State
- State Parks and Recreation

State Wildlife Reserve/Management Area

USFW National Wildlife Refuge

USFS Wilderness Area



JANUARY 13, 2017



# Attachment A2: Map 2

## Legend

- TMA Boundary

Field Office Bdry

US Highways

State Highways
- Bureau of Land Management (BLM)

BLM Wilderness Area

Wilderness Study Area

Indian Reservation (IR)
- Military Reservations and Corps of Engineers

National Park Service (NPS)

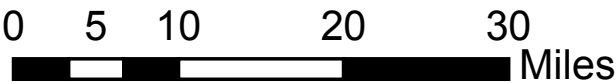
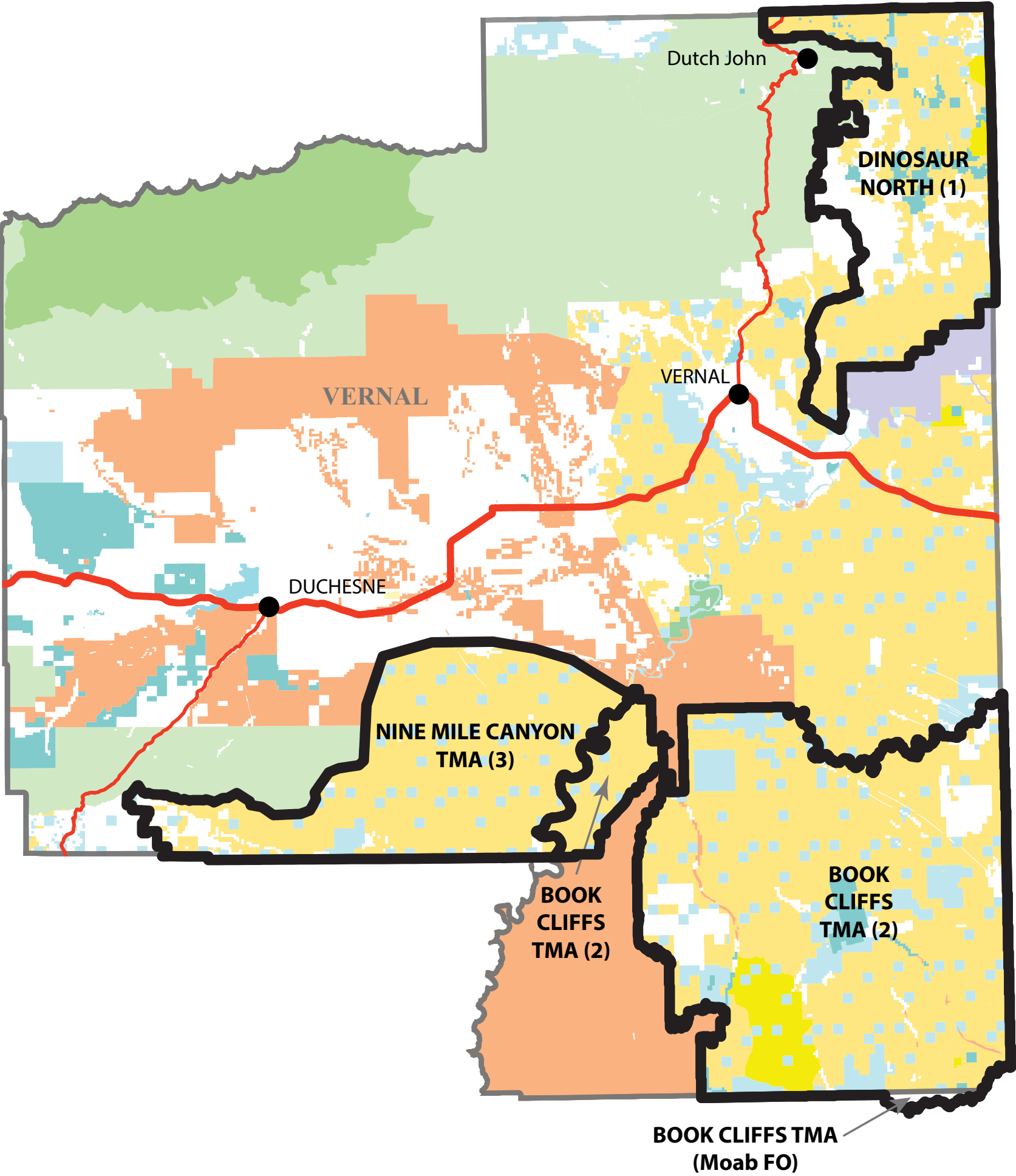
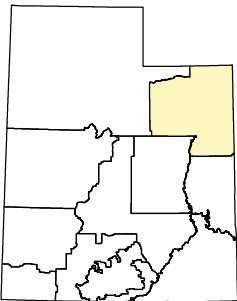
Private

State
- State Parks and Recreation

State Wildlife Reserve/Management Area

USFW National Wildlife Refuge

USFS Wilderness Area



Vernal Field Office



# Attachment A3: Map 3

## Legend

- US Highways

State Highways

TMA Boundary
- Bureau of Land Management (BLM)

BLM Wilderness Area

Wilderness Study Area

Indian Reservation (IR)
- Military Reservations and Corps of Engineers

National Park Service (NPS)

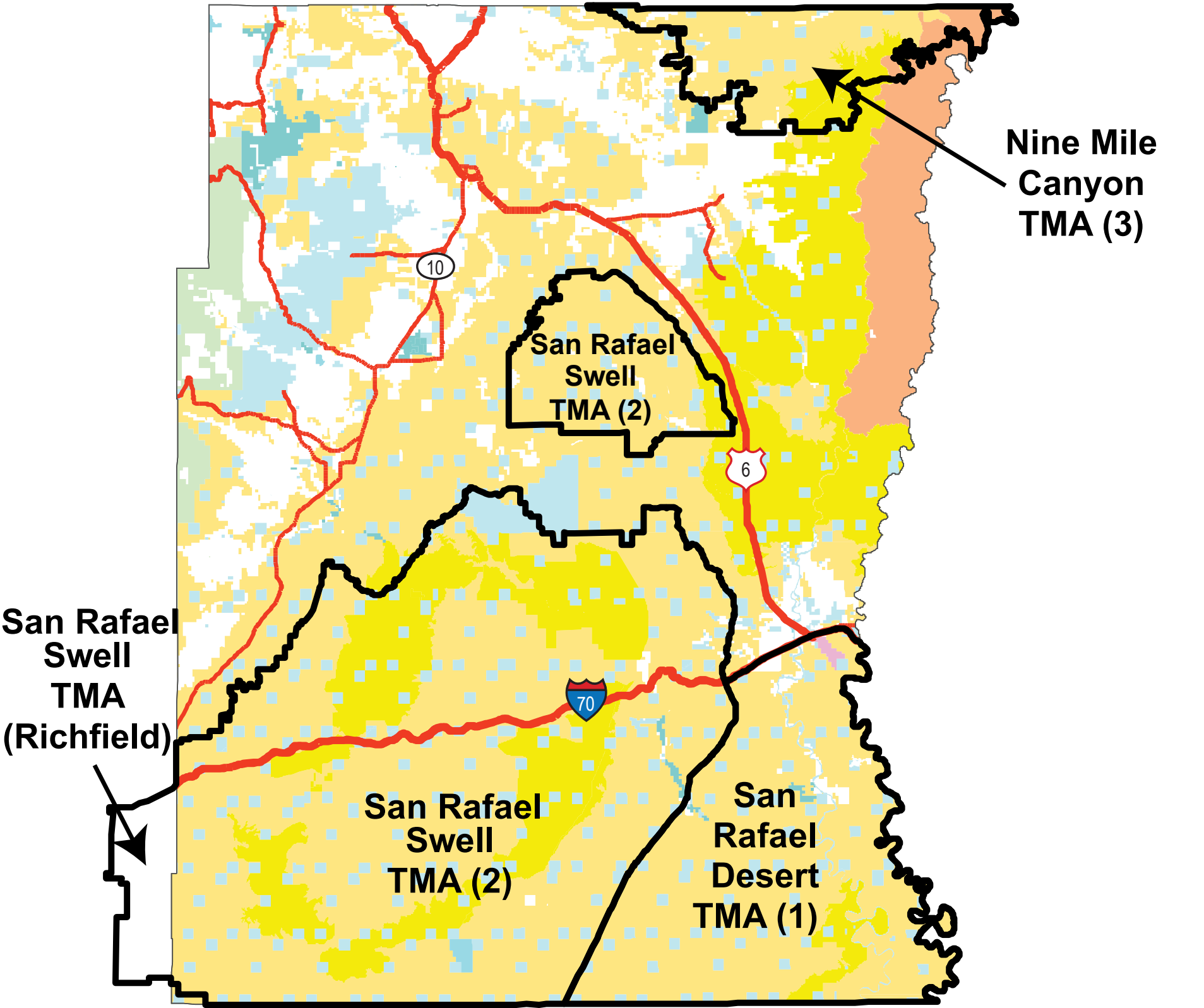
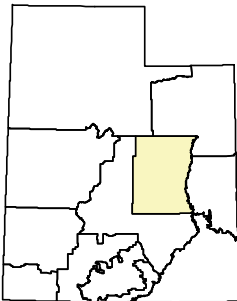
Private

State
- State Parks and Recreation

State Wildlife Reserve/Management Area

USFW National Wildlife Refuge

USFS Wilderness Area



Price Field Office

JANUARY 13, 2017



# Attachment A4: Map 4

## Legend

- US Highways

State Highways
- Bureau of Land Management (BLM)

BLM Wilderness Area

Wilderness Study Area

Indian Reservation (IR)
- Military Reservations and Corps of Engineers

National Park Service (NPS)

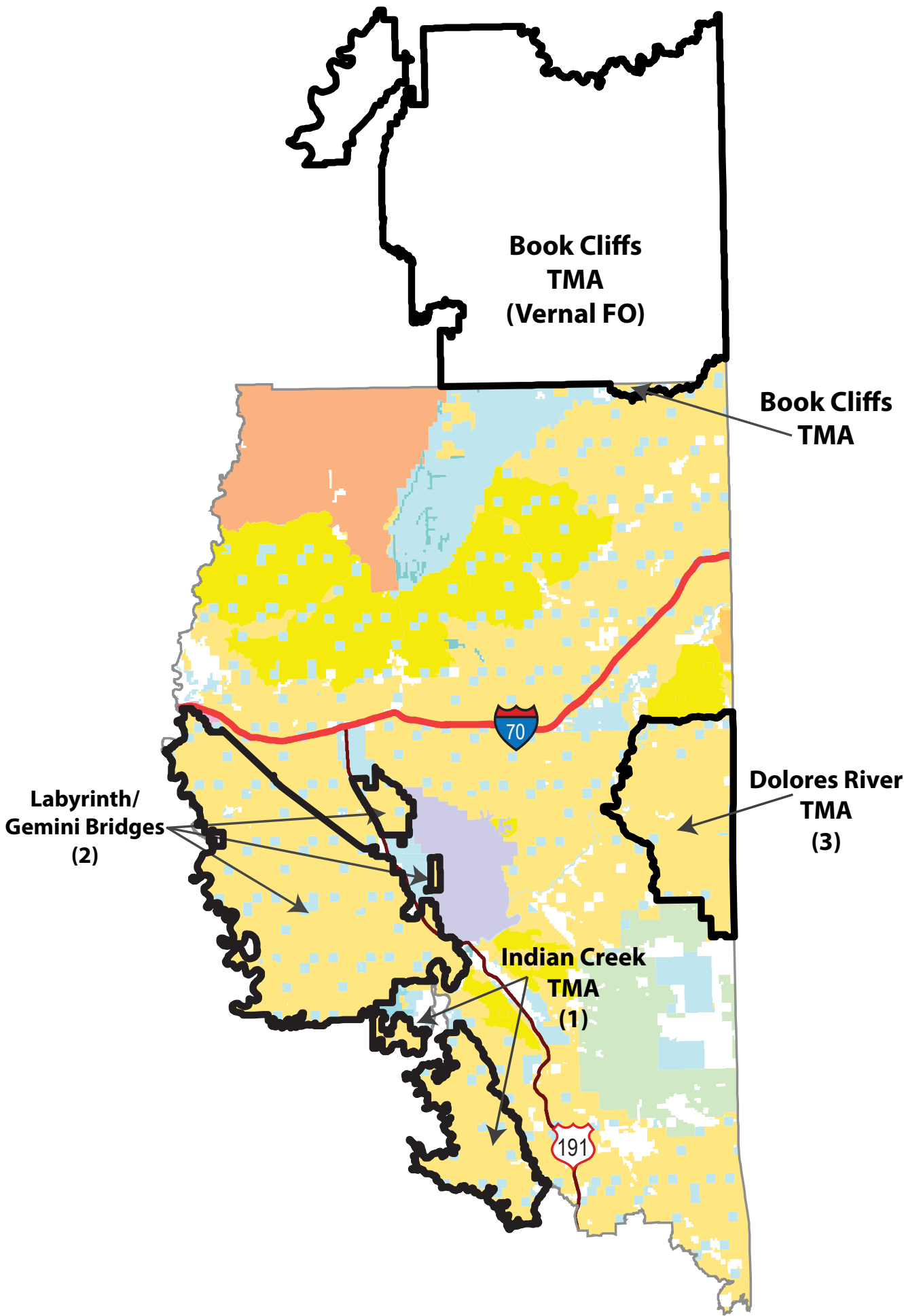
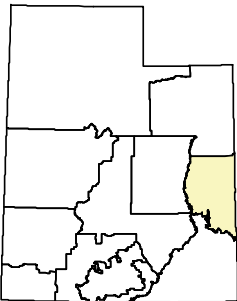
Private

State
- State Parks and Recreation

State Wildlife Reserve/Management Area

USFW National Wildlife Refuge

USFS Wilderness Area



0 10 20 30 Miles

Moab Field Office

JANUARY 13, 2017

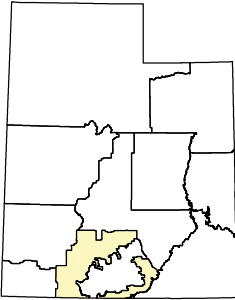
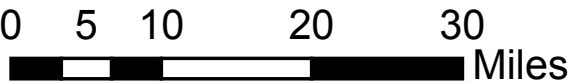




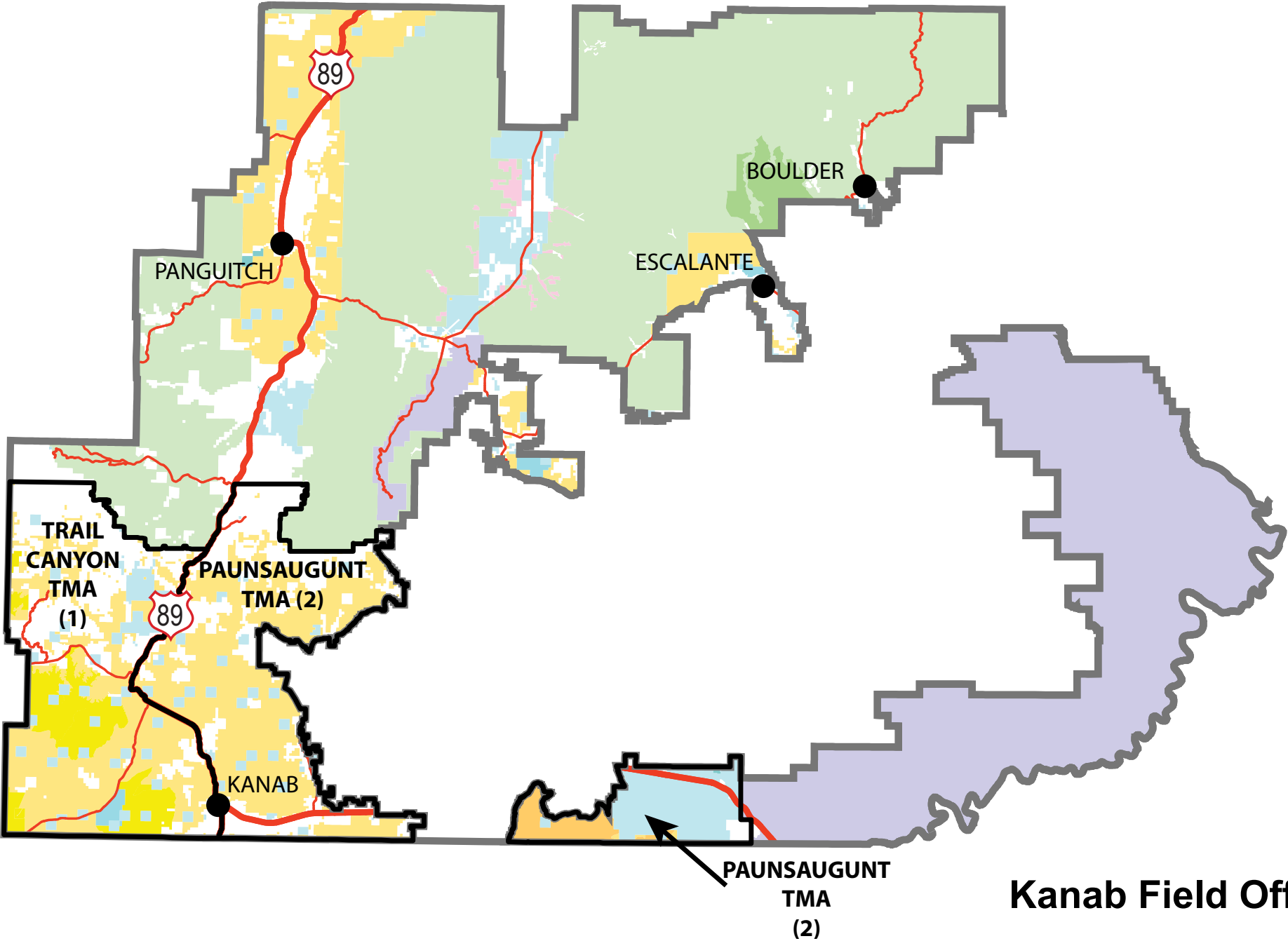
Attachment A5: Map 5

Legend

- US Highways
- State Highways
- Field Office Boundary
- TMA Boundary
- Kanab Field Office Boundary
- Bureau of Land Management (BLM)
- BLM Wilderness Area
- Wilderness Study Area
- Indian Reservation (IR)
- Military Reservations and Corps of Engineers
- National Park Service (NPS)
- Private
- State
- State Parks and Recreation
- State Wildlife Reserve/Management Area
- USFW National Wildlife Refuge
- USFS Wilderness Area



JANUARY 13, 2017





Kanab Field Office









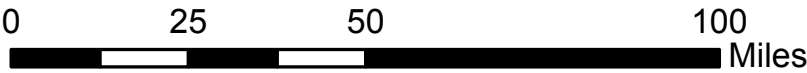
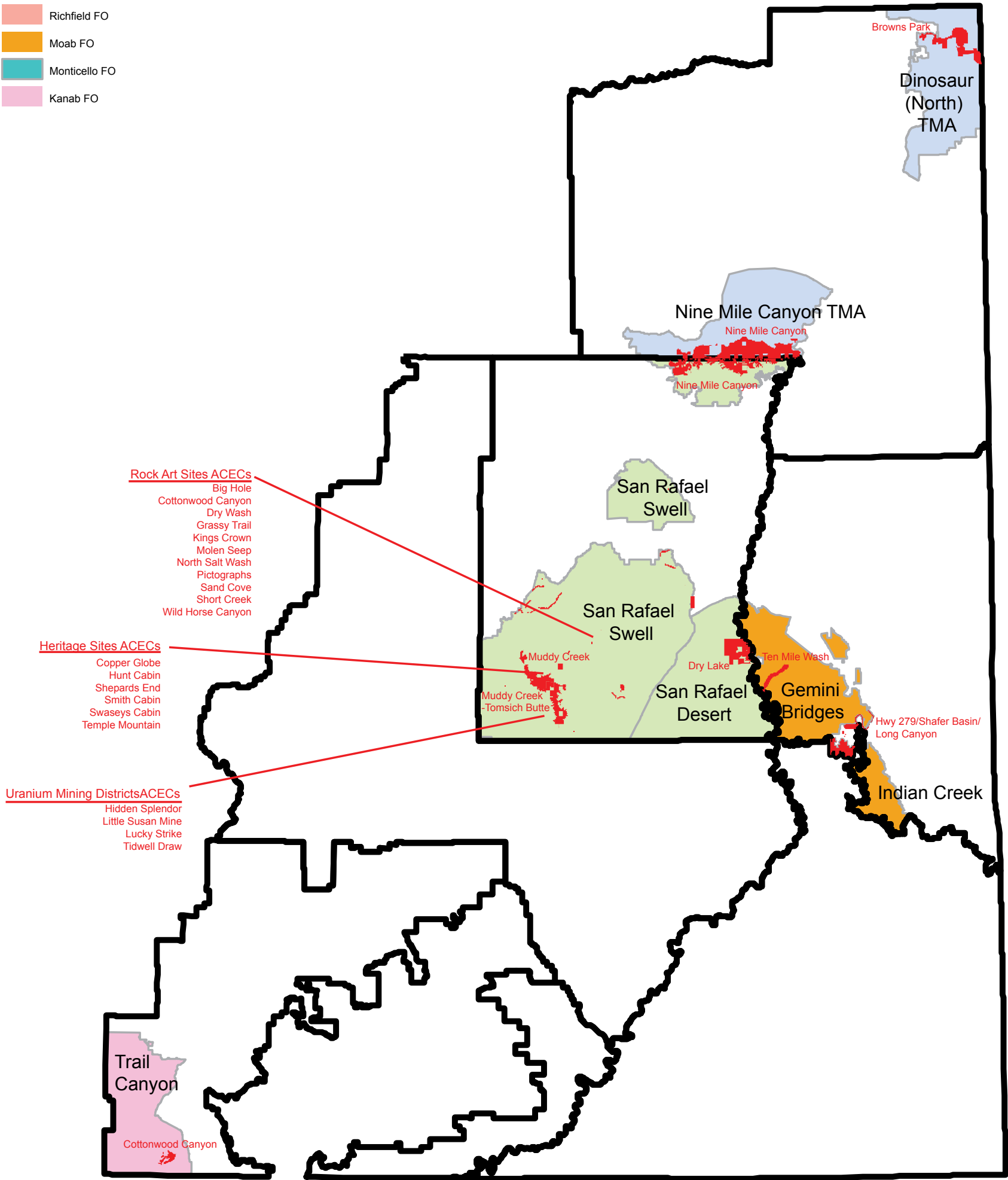
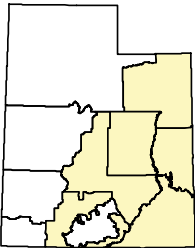
# Attachment A6 (Map 6)

## Legend

-  Field Office Boundary
-  ACEC with Relevant and Important Cultural Resource Values

### TMA's Containing ACEC

-  Vernal FO
-  Price FO
-  Richfield FO
-  Moab FO
-  Monticello FO
-  Kanab FO






# Attachment A7 (Map 7)

## Legend

 Field Office Boundary

## Potential ACECs Re-Evaluations

 Vermilion Cliffs

