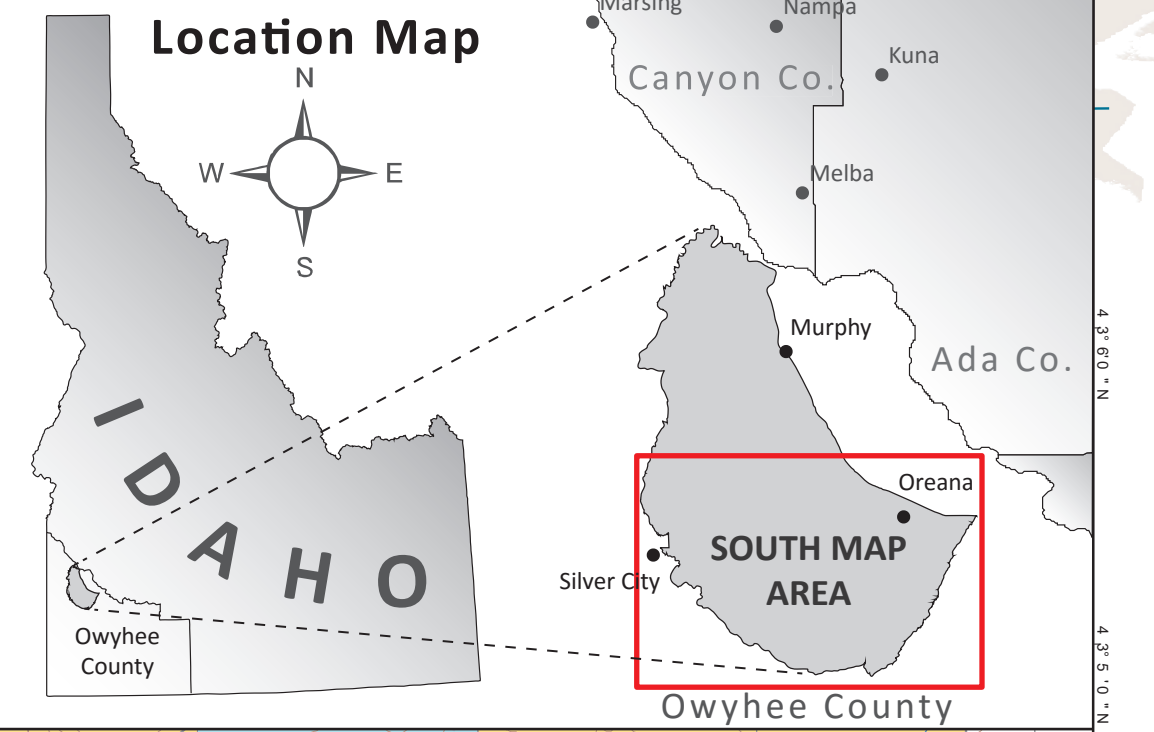
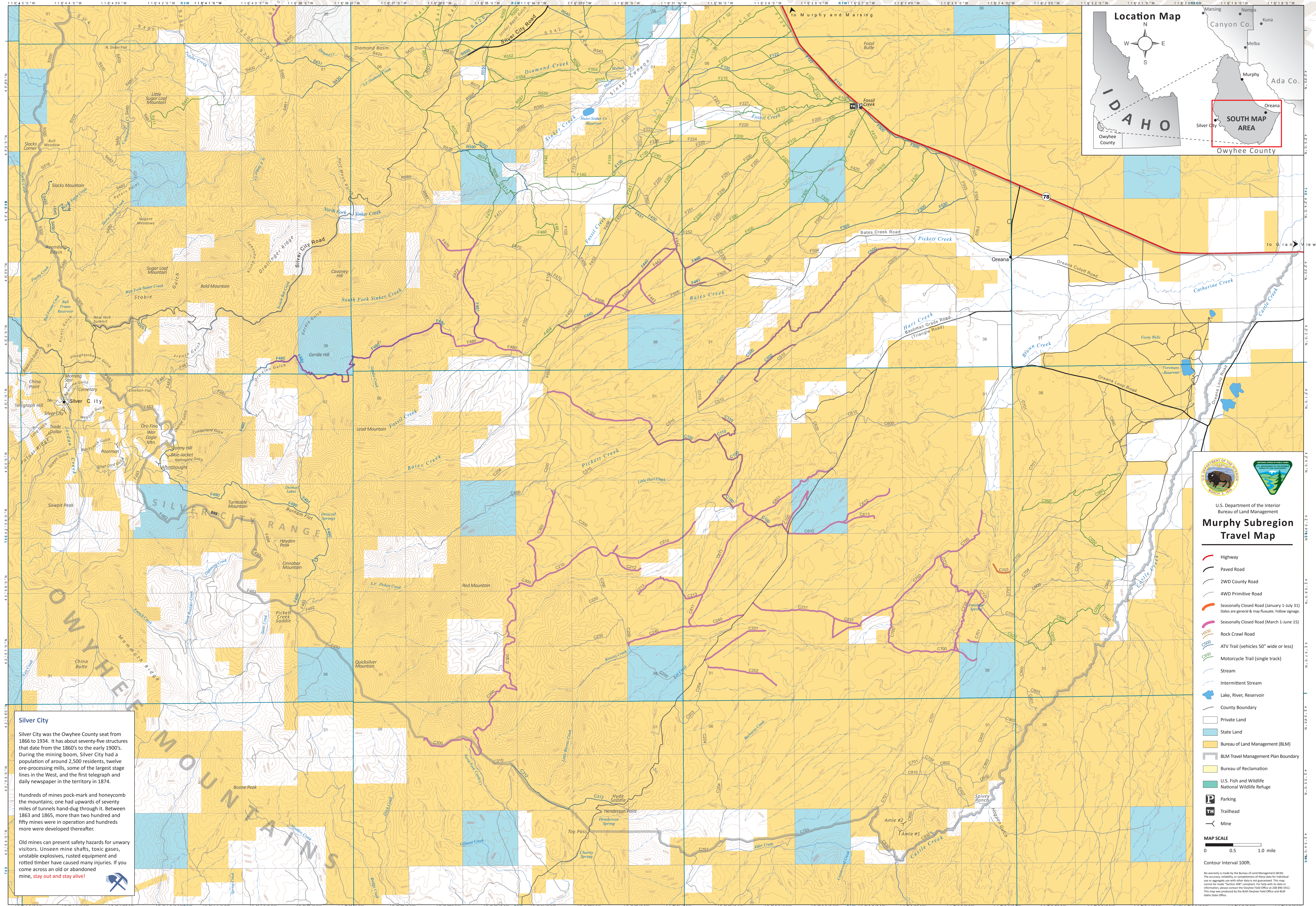


# Murphy Subregion Travel Map - South Area



**Silver City**

Silver City was the Owyhee County seat from 1866 to 1934. It has about seventy-five structures that date from the 1860's to the early 1900's. During the mining boom, Silver City had a population of around 2,500 residents, twelve ore-processing mills, some of the largest stage lines in the West, and the first telegraph and daily newspaper in the territory in 1874.

Hundreds of mines pock-mark and honeycomb the mountains; one had upwards of seventy miles of tunnels hand-dug through it. Between 1863 and 1865, more than two hundred and fifty mines were in operation and hundreds more were developed thereafter.

Old mines can present safety hazards for unwarly visitors. Unseen mine shafts, toxic gases, unstable explosives, rusted equipment and rotted timber have caused many injuries. If you come across an old or abandoned mine, **stay out and stay alive!**

U.S. Department of the Interior  
Bureau of Land Management

### Murphy Subregion Travel Map

- Highway
- Paved Road
- 2WD County Road
- 4WD Primitive Road
- Seasonally Closed Road (January 1-July 31)  
Dates are general & may fluctuate. Follow signage.
- Seasonally Closed Road (March 1-June 15)
- Rock Crawl Road
- ATV Trail (vehicles 50" wide or less)
- Motorcycle Trail (single track)
- Stream
- Intermittent Stream
- Lake, River, Reservoir
- County Boundary
- Private Land
- State Land
- Bureau of Land Management (BLM)
- BLM Travel Management Plan Boundary
- Bureau of Reclamation
- U.S. Fish and Wildlife National Wildlife Refuge
- Parking
- Trailhead
- Mine

**MAP SCALE**  
0 0.5 1.0 mile

Contour Interval 100ft.

No warranty is made by the Bureau of Land Management (BLM) for the accuracy, reliability, or completeness of these data for individual use or aggregation with other data not guaranteed. This map was created for the "Section 508" compliance. For help with its data or information, please contact the Owyhee Field Office at 208.686.9112. This map was produced by the BLM Owyhee Field Office and BLM Idaho State Office.