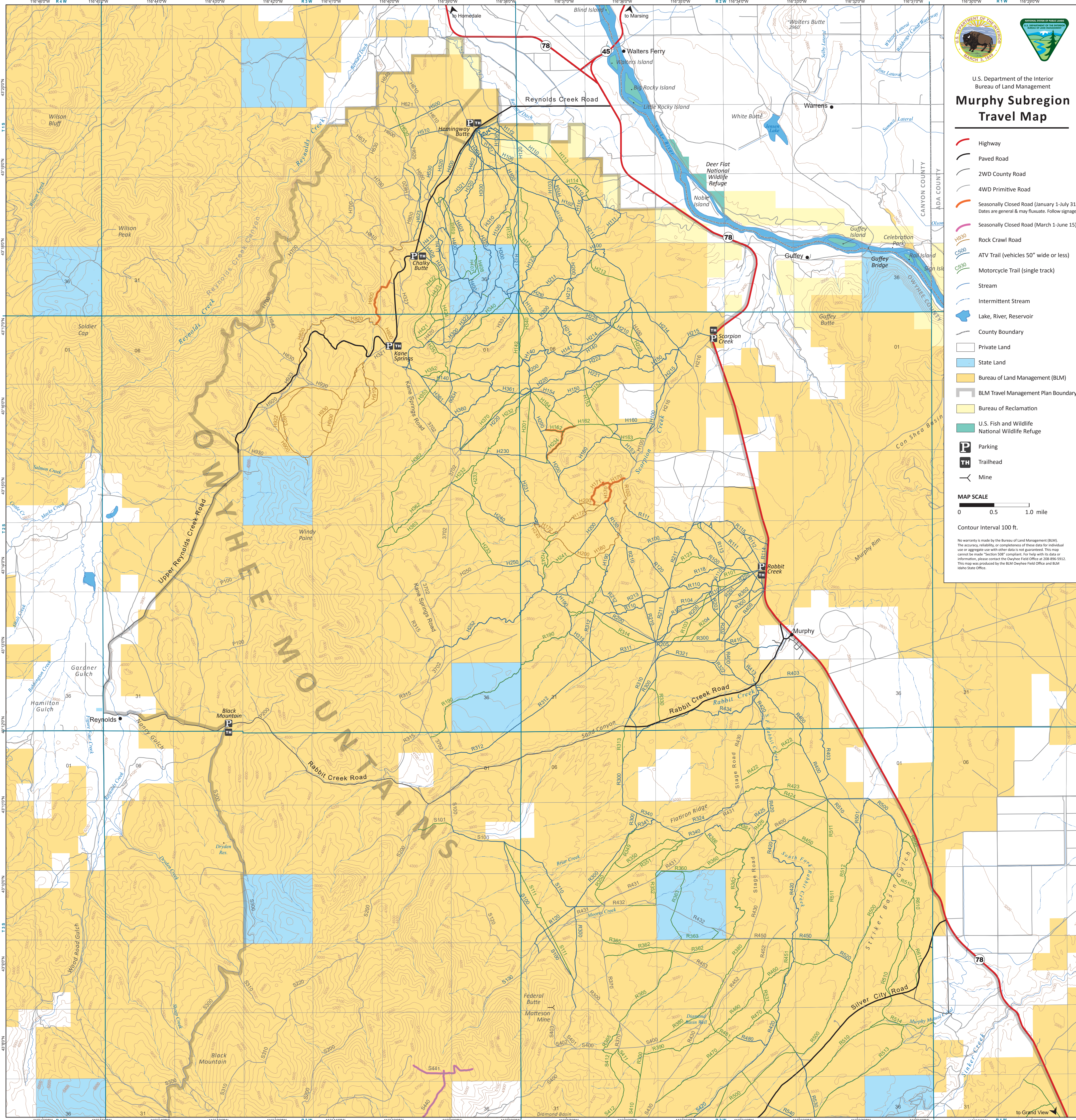


Murphy Subregion Travel Map - North Area



**U.S. Department of the Interior
Bureau of Land Management
Murphy Subregion
Travel Map**

Highway
Paved Road
2WD County Road
4WD Primitive Road
Seasonally Closed Road (January 1-July 31)
Seasonally Closed Road (March 1-June 15)
Rock Crawl Road
ATV Trail (vehicles 50" wide or less)
Motorcycle Trail (single track)
Stream
Intermittent Stream
Lake, River, Reservoir
County Boundary
Private Land
State Land
Bureau of Land Management (BLM)
BLM Travel Management Plan Boundary
Bureau of Reclamation
U.S. Fish and Wildlife National Wildlife Refuge

P Parking
TH Trailhead
M Mine

MAP SCALE
 0 0.5 1.0 mile
 Contour Interval 100 ft.

No warranty is made by the Bureau of Land Management (BLM) for the accuracy, reliability, or completeness of these data for individual use or aggregate use with other data in most government. This map cannot be used for "best-of" purposes. For help with this data or information, please contact the Owyhee Field Office at 208-896-5912. This map was produced by the BLM Owyhee Field Office and 8/24 Idaho State Office.

The Murphy Subregion Travel Map

This map depicts travel routes available for public uses established by the Bureau of Land Management's Murphy Subregion Travel Management Plan (2009). All motorized travel is limited to designated roads, primitive roads, and trails. For more information contact the Owyhee Field Office at 1-208-896-5912.

Designated Routes

ROAD: A linear route declared a road by the owner, managed for use by low-clearance vehicles having four or more wheels, and maintained for regular and continuous use.

PRIMITIVE ROAD: A linear route managed for use by four-wheel drive or high-clearance vehicles. These roads do not normally meet any BLM road design standards.

Rock Crawl (Primitive) Road for extreme off-road driving over very harsh terrain including boulders, rock piles, mountain trails, etc.

SEASONALLY CLOSED: Allows for travel at certain times of year as specified by the travel management plan for the protection of wildlife.

TRAIL: A linear route managed for human-powered, stock, or off-highway vehicle forms of transportation or for historical or heritage values. Trails are not generally managed for use by four-wheel drive or high-clearance vehicles. On this map, there are two motorized trail types:

ATV Trail (50" wide or less, allows for travel by ATVs, off-highway motorcycles and non-motorized uses. **UTV and vehicles wider than 50 inches are prohibited on ATV trails.**

Motorcycle Trail (single track)

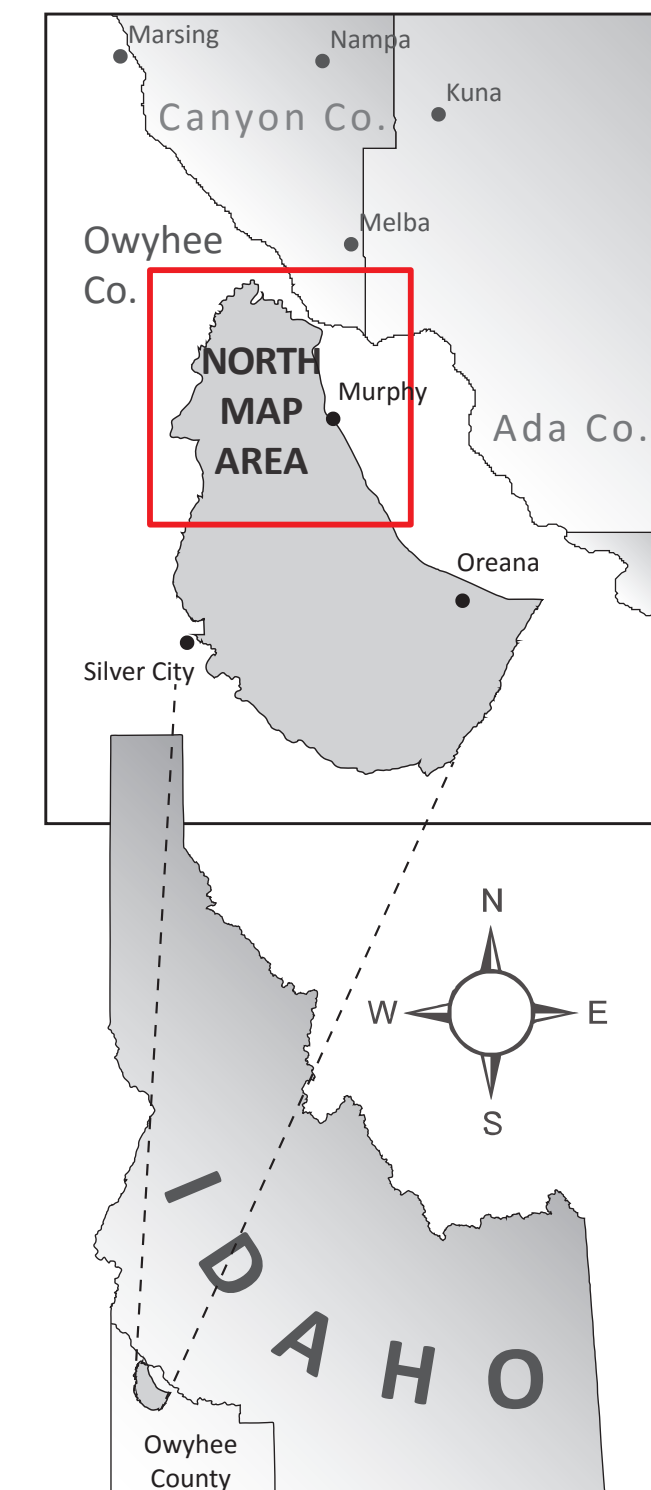
Designated Routes = Brown Posts

TRAIL C500 (ATV/Motorcycle icons)
TRAIL C930 (ATV/Motorcycle icons)
ROAD S420 (4WD Primitive Road icon)

Closed or Restricted Routes = White Posts

ROUTE CLOSED
NO THRU ROUTE
LAND AHEAD PRIVATE
FOR THE PROTECTION OF SOILS, PLANTS & WILDLIFE

Location Map



What is OK:

If the route is wider than the vehicle, you're OK.

Get Dirty
 Go straight through mud puddles while maintaining a steady speed. Don't get stuck.

Stay on Trails
 Wetlands are important and sensitive areas for wildlife and people. Please avoid them.

No Shortcuts
 Switchbacks are designed to maintain the stability of a trail, cutting them destroys their integrity.

What is NOT OK:

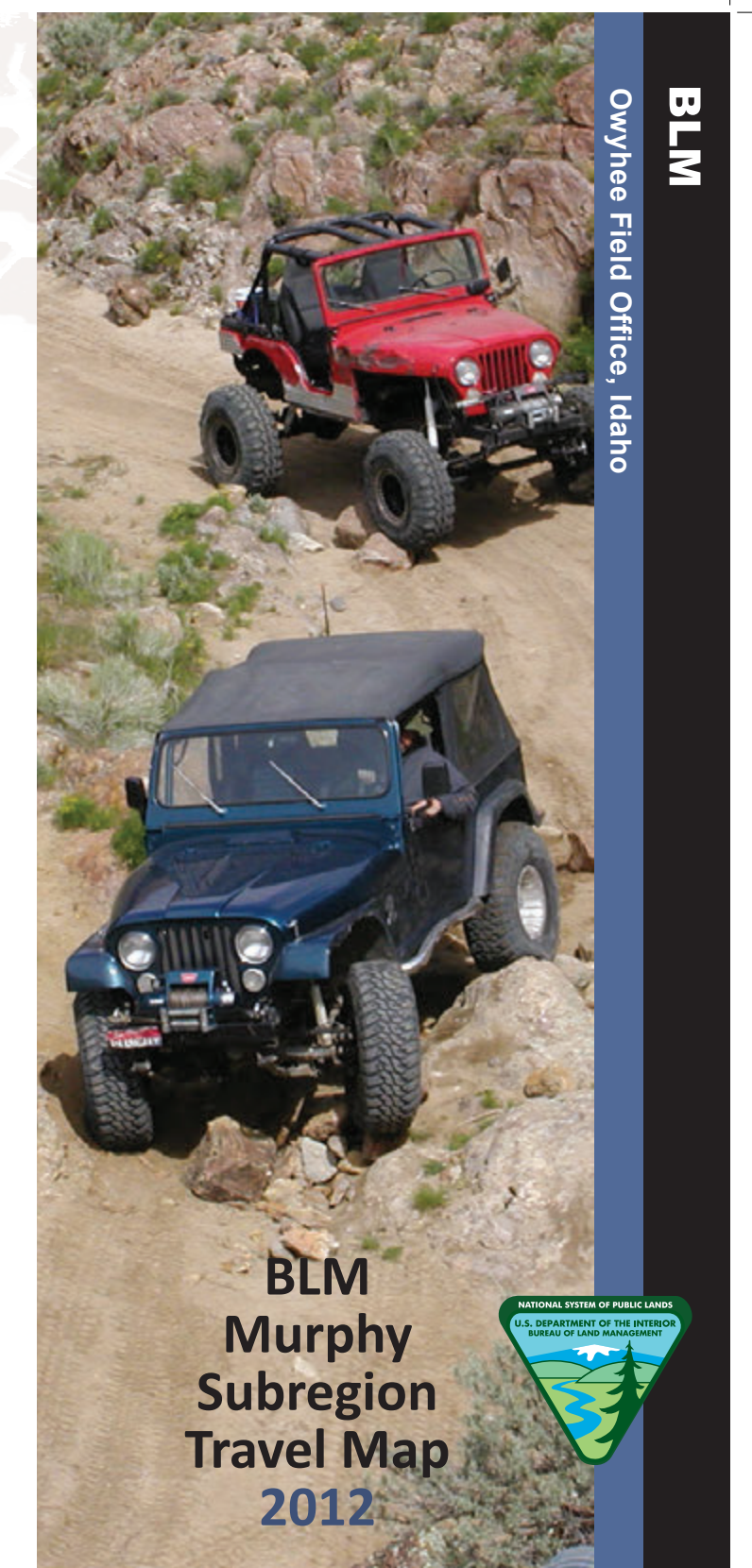
Your vehicle should not be wider than the route.

And if you're breaking trail, **TURN AROUND!**

Ride Responsibly on Public Lands

- Share the trails. Make friends with other trail users.** Stop or slow down and lower the noise and dust levels when approaching equestrians, hikers and other land users. Yield the right of way to those passing or traveling uphill.
- Maintain your equipment and pack the right gear.** Maintain your exhaust system and know the sound limits where you ride. Remember, noise doesn't equal horsepower. Too little exhaust back-pressure can cause less power and engine damage.
- Wear your helmet.** It will save your life. Remember Idaho State Law requires kids 17 and under to wear a helmet.
- View animals from a distance.** When they flee they use valuable energy reserves.
- Respect seasonal closures.** Animals need places where they can survive the winter, reproduce, and raise their young undisturbed.
- Dispose of trash properly.** Pack it in and pack it out!
- Leave gates as you find them.** Gates are a vital part of an area's livestock grazing.

Go to Idaho Parks and Recreation's website at stayontrails.com for more information. Thank you.



BLM Owyhee Field Office, Idaho

**BLM
Murphy
Subregion
Travel Map
2012**

U.S. Department of the Interior
Bureau of Land Management

BLM Owyhee Field Office
 20 First Avenue West
 Marsing, ID 83639
 (208) 896-5912
www.blm.gov/id/st/en.html

EMERGENCY CONTACTS

- Emergency 911
- Owyhee County Sheriff (208) 495-1154
- Idaho State Police 1-208-884-7360
- Report All Wildfires BLM Interagency Dispatch (208) 384-3400

