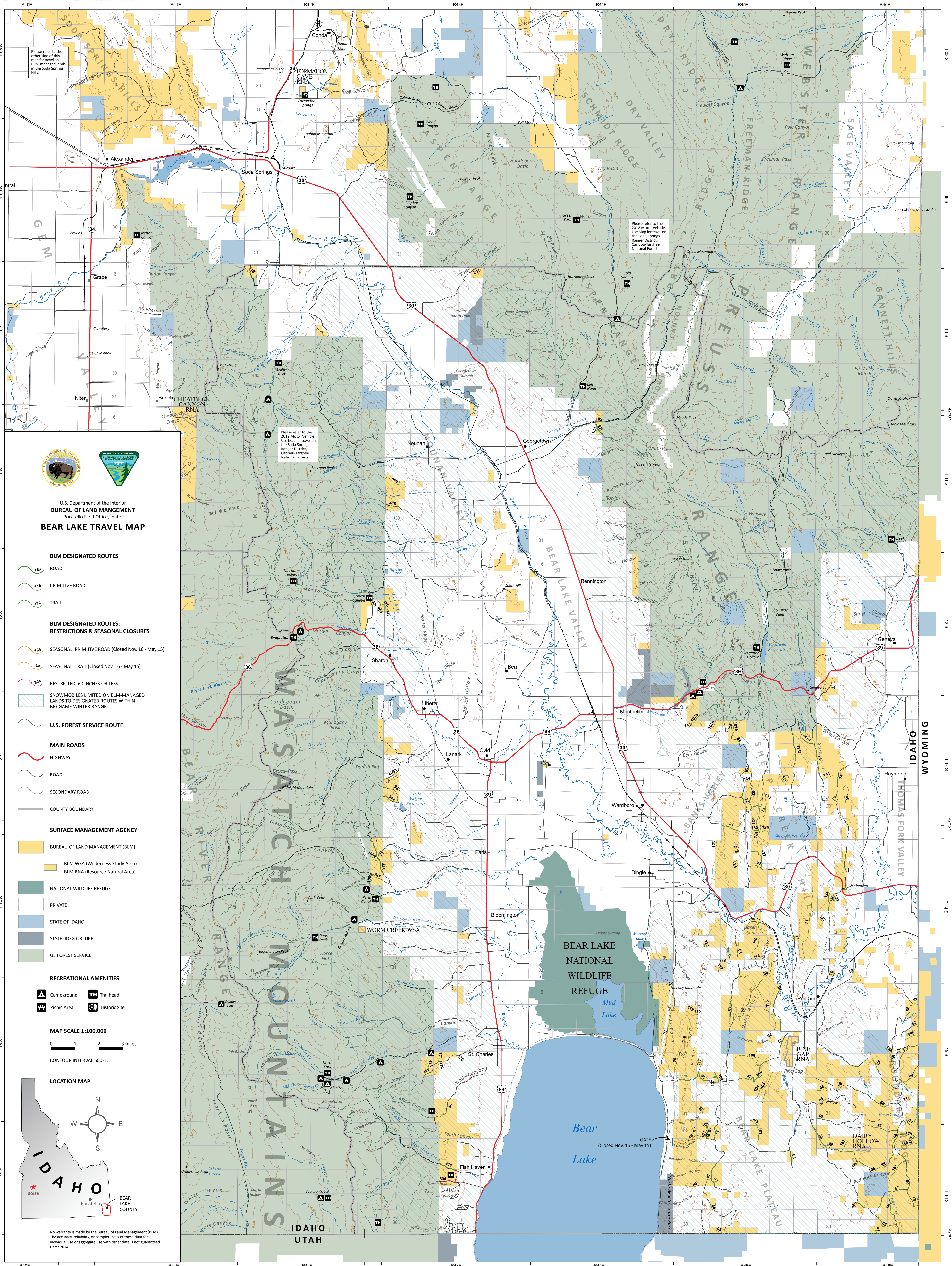


Bear Lake Travel Map



Please refer to the other side of this map for travel on BLM-managed lands in the Soda Springs Hills.

Please refer to the 2012 Motor Vehicle Use Map for travel on the Soda Springs Ranger District, Caribou-Targhee National Forests.

Please refer to the 2012 Motor Vehicle Use Map for travel on the Soda Springs Ranger District, Caribou-Targhee National Forests.



U.S. Department of the Interior
BUREAU OF LAND MANAGEMENT
 Pocatello Field Office, Idaho
BEAR LAKE TRAVEL MAP

BLM DESIGNATED ROUTES

- ROAD
 - PRIMITIVE ROAD
 - TRAIL
- BLM DESIGNATED ROUTES: RESTRICTIONS & SEASONAL CLOSURES**
- SEASONAL: PRIMITIVE ROAD (Closed Nov. 16 - May 15)
 - SEASONAL: TRAIL (Closed Nov. 16 - May 15)
 - RESTRICTED: 60 INCHES OR LESS
 - SNOWMOBILES LIMITED ON BLM-MANAGED LANDS TO DESIGNATED ROUTES WITHIN BIG GAME WINTER RANGE

U.S. FOREST SERVICE ROUTE

- HIGHWAY
- ROAD
- SECONDARY ROAD
- COUNTY BOUNDARY

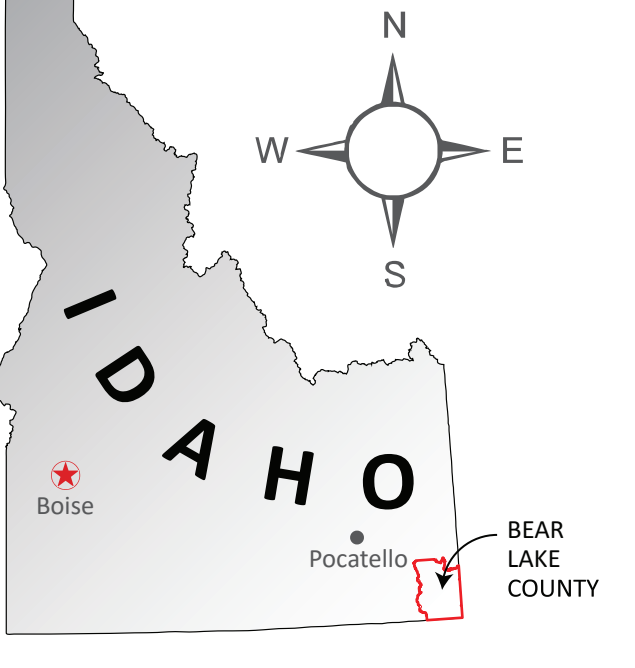
SURFACE MANAGEMENT AGENCY

- BUREAU OF LAND MANAGEMENT (BLM)
- BLM WSA (Wilderness Study Area)
- BLM RNA (Resource Natural Area)
- NATIONAL WILDLIFE REFUGE
- PRIVATE
- STATE OF IDAHO
- STATE: IDFG OR IDPR
- US FOREST SERVICE

RECREATIONAL AMENITIES

- Campground
 - Trailhead
 - Picnic Area
 - Historic Site
- MAP SCALE 1:100,000
- 0 1 2 3 miles
- CONTOUR INTERVAL 600FT.

LOCATION MAP



No warranty is made by the Bureau of Land Management (BLM). The accuracy, reliability, or completeness of these data for individual use or aggregate use with other data is not guaranteed. Date: 2014