



Campbell Tract

History
The military first established Campbell Tract during World War II as a 5,000-foot long airfield with support buildings and structures. Remnants of bomber parking pads and taxiways, building foundations, foxholes, and defensive earthworks can still be seen today. In the 1970s, the Tract served as a base for smokejumpers who launched forest fire suppression activities across the state from the airstrip.

Today, Campbell Tract is an administrative site for the BLM Anchorage Field and District Office that includes offices, warehouses, communication sites, and an active airstrip. Alaska's DMAT (Disaster Medical Assistance Team) stores a portable field hospital at the Campbell Tract, ready to respond anywhere in the state.



Army Air Corps garrison building - a Quonset hut near Campbell Creek as a part of the military installation on Campbell Tract during World War II.

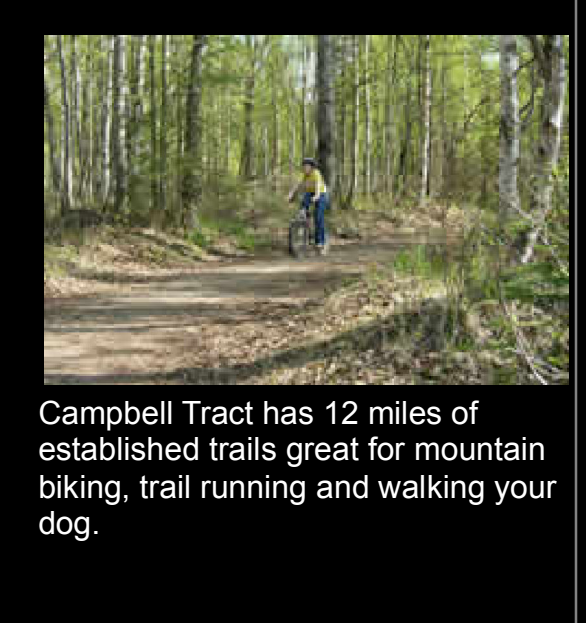
Enjoy the Trails
Campbell Tract multi-use trails offer year-round non-motorized recreation opportunities, including hiking, jogging, skiing and skijoring, snowshoeing, mountain biking, and horseback riding. Campbell Tract trails connect to a broader network of city trails on adjacent Far North Bicentennial Park and Heritage Land Bank lands maintained by the Municipality of Anchorage.

More than 300,000 users share Campbell Tract trails each year, so please be considerate of other users. You can help protect the land and respect other users by staying on established trails, avoiding muddy trails, maintaining safe speeds, leashing and cleaning up after your dog, and picking up trash.

A separate system of sled dog trails on Campbell Tract, maintained by the Alaska Sled Dog and Racing Association, provides a venue for world-class sled dog events. Because dog teams are fast, quiet, and cannot stop quickly, sled dog trails are off limit to other users during the winter months.

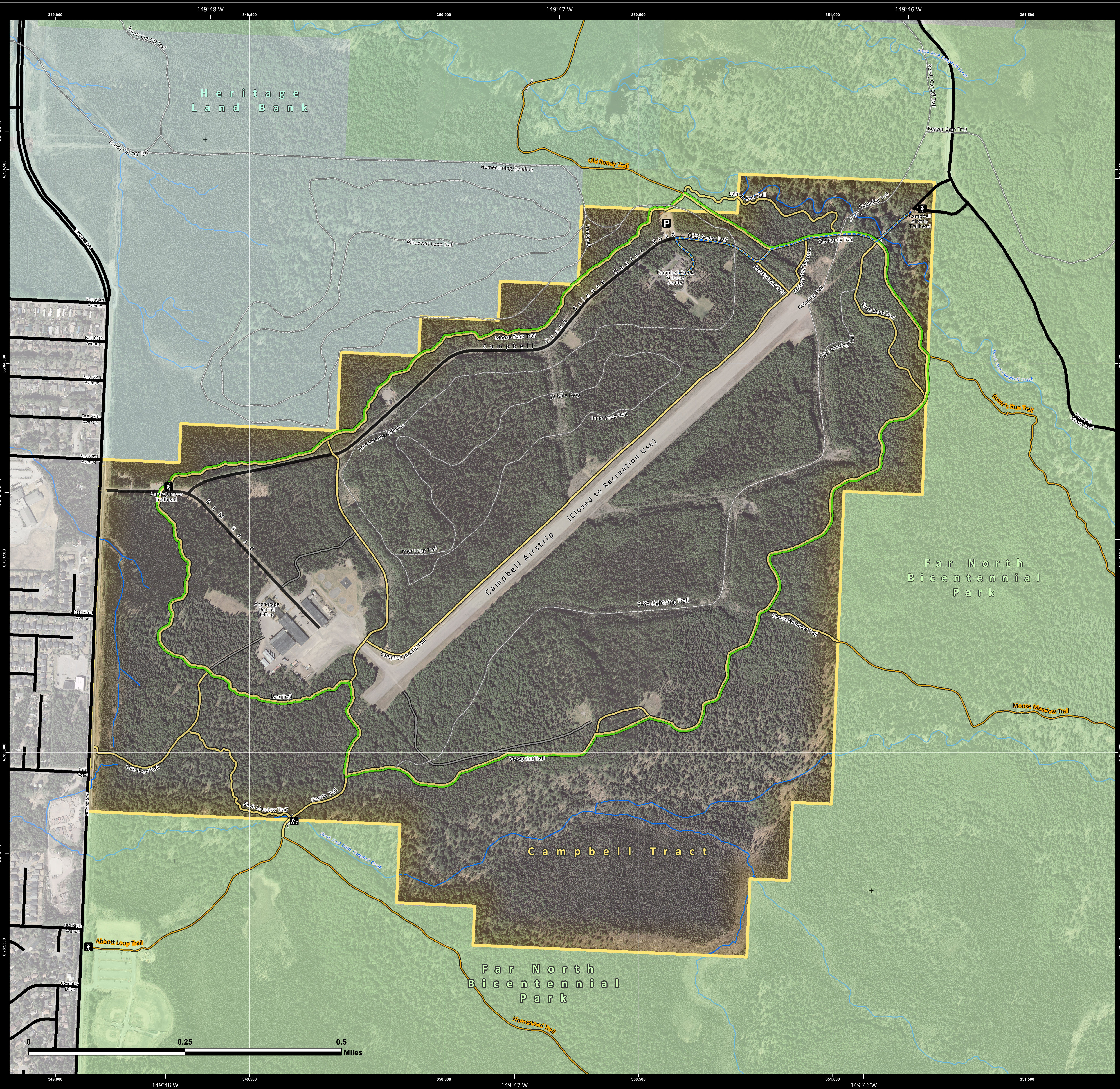


Campbell Tract offers 12 miles of groomed ski trails in the winter.



Campbell Tract has 12 miles of established trails great for mountain biking, trail running and walking your dog.

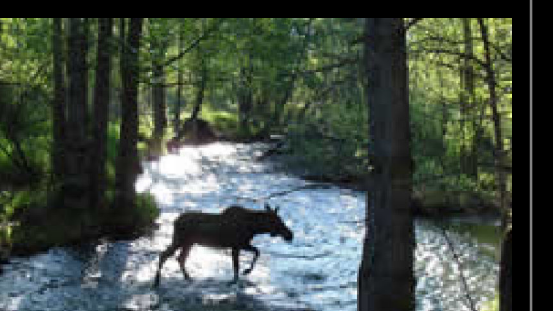
- General Rules**
The following help keep other trail users safe, protect our natural resources, and protect your privilege as a trail user:
- no off-leash dogs; physical restraints required (no electronic collars)
 - no access allowed on airstrip
 - no motorized vehicles
 - no camping or fires
 - no salmon fishing
 - no tree cutting or collecting vegetation
 - no harassing wildlife
 - no alcohol consumption
 - no use of firearms or paintball guns
 - no disturbing or removal of historic artifacts



View Wildlife
Campbell Tract is home to a variety of boreal forest plants and wildlife. Be alert for moose, porcupine, lynx, fox, coyote, snowshoe hare, red squirrel, as well as black and brown bears. King and Coho salmon are commonly seen in Campbell Creek during the summer months. For your safety, give moose a wide berth and run if a moose charges you. Make noise to avoid bear encounters and NEVER run from a bear.

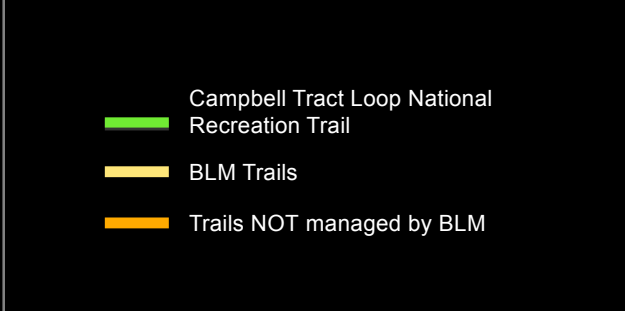


Black bears and brown bear both call Campbell Tract home. Always be bear aware on the trails!



Moose call the Campbell Tract home for its great vegetation and access to Campbell Creek. Watch out for them on the trails.

The Campbell Creek Science Center is nestled in the forest of Campbell Tract and provides educational opportunities for adults, children, and families. Visitors have access to creeks, forests, meadows, and a rich abundance of plants and wildlife. The Center's programs promote awareness, understanding, stewardship, and an appreciation for the natural environment.



The Campbell Creek Science Center is nestled in the forest of Campbell Tract and provides educational opportunities for adults, children, and families. Visitors have access to creeks, forests, meadows, and a rich abundance of plants and wildlife. The Center's programs promote awareness, understanding, stewardship, and an appreciation for the natural environment.

- Legend**
- Campbell Tract Loop National Recreation Trail
 - BLM Trails
 - Trails NOT managed by BLM
 - Accessible Trail
 - Winter: Dog Mushing Trail Only, Summer: Multi-Use Trail
 - Road/Street
 - BLM Maintenance Road
 - Heritage Land Bank
 - Far North Bicentennial Park
 - Bridge
 - Streams

Disclaimer:
No warranty is made by the Bureau of Land Management as to the accuracy, reliability, or completeness of these data for individual or aggregate use with other data. Original data were compiled from various sources. This information may not meet National Map Accuracy Standards. This product was developed through digital means and may be updated without notification. The information displayed on this map should be used for graphic display only. For official land status information, refer to Cadastral Survey plats, Master Title Plats, and landstatus case-files.

Contact Information
Bureau of Land Management
Anchorage Field Office
4700 BLM Road
Anchorage, AK 99507
Phone: 907-267-1246
<https://www.blm.gov/alaska>

