



**National Petroleum Reserve in Alaska**  
Formerly known as the Naval Petroleum Reserve No. 4, the National Petroleum Reserve in Alaska (NPR-A) is now a vast ~23-million-acre area on Alaska's North Slope. In 1923, mindful of the land's conceivable petroleum value, President Harding set aside this area as an emergency oil supply for the U.S. Navy. In 1976, in accordance with the Naval Petroleum Reserves Production Act, administration of the reserve was transferred to the Department of the Interior's Bureau of Land Management and renamed the NPR-A.



An aerial view of a naturally occurring oil seep.

The NPR-A's northeastern corner is home to active oil field operations with access only permitted for authorized personnel.



Greater Moose's Tooth 1 (photo courtesy of ConocoPhillips)

Seasonal community winter access trails to some North Slope communities in the NPR-A are provided as a courtesy to residents by a North Slope Borough and private industry partnership permitted through the BLM. General public access is not allowed.

**Be respectful of the land and the people who live here.**



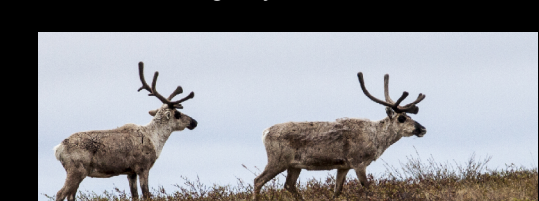
Subsistence hunter near Atkasuk.

**Conflict Avoidance**  
Flying into the NPR-A is a common way to access this remote landscape. Aircraft use near NPR-A communities and along subsistence rivers is a sensitive issue, and BLM works with communities and users to avoid conflict.

Please avoid flying low over hunting areas or along rivers when moose or caribou hunters are active (July - September).

Be sensitive to the needs of local people. If you see people on the ground, on a lake or on a river, make an extra effort to avoid them. Keep in mind that people on the ground hear and see aircraft long before pilots see them.

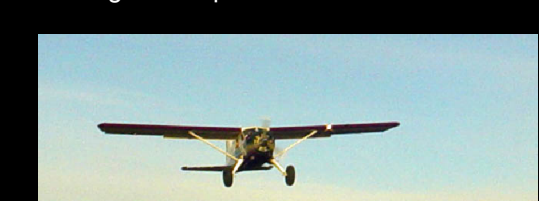
If you see caribou, please divert your path to avoid coming any closer to them.



Consistent with air safety rules and mission requirements, please try to maintain an altitude of 2,500 feet or more above ground level.

When landing, take the time to scout out the surrounding area to make sure you may not be setting down next to a subsistence camp site or an area actively being hunted.

Please remind pilots and aircraft managers of the situation so that they too can be looking out for possible conflicts.



**Recreation Opportunities**  
The vast Arctic region of the NPR-A offers unique recreational opportunities. The recreation experience is primitive, and the entire area is considered an unmodified natural environment. Individual users rarely, if ever, encounter other recreationalists.

NPR-A is open to backpacking/hiking, rafting/floating, sight-seeing, and wildlife viewing.

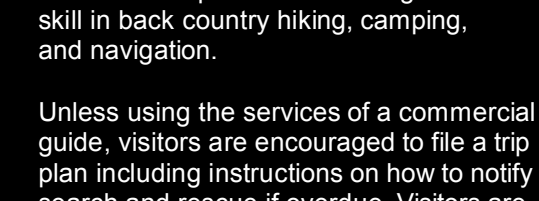
There are no services or developed facilities for recreation in the NPR-A.

If you pack it in, then pack it out. See [www.blm.gov/learn/outdoor-etiquette](http://www.blm.gov/learn/outdoor-etiquette) for tips.



There are no marked trails in NPR-A, and the terrain is difficult, consisting of tussock tundra or mountainous areas. Visitors must possess knowledge and skill in back country hiking, camping, and navigation.

Unless using the services of a commercial guide, visitors are encouraged to file a trip plan including instructions on how to notify search and rescue if overdue. Visitors are also encouraged to carry a personal locator beacon.

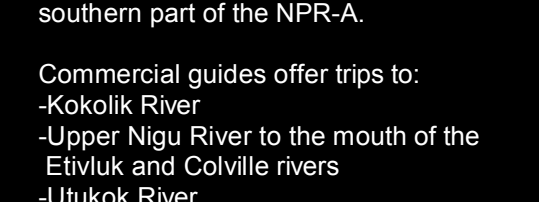


Floating Opportunities

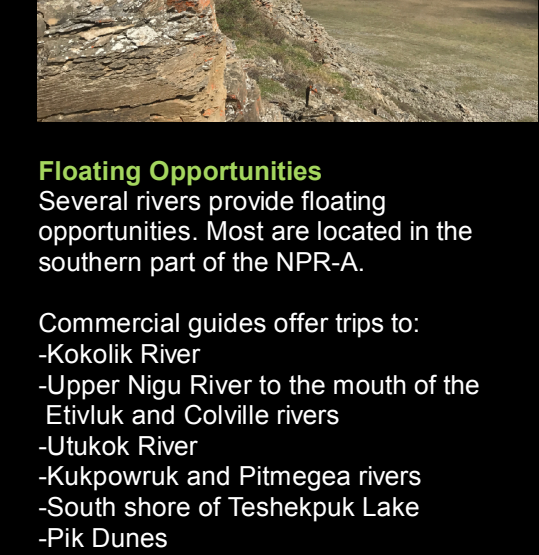
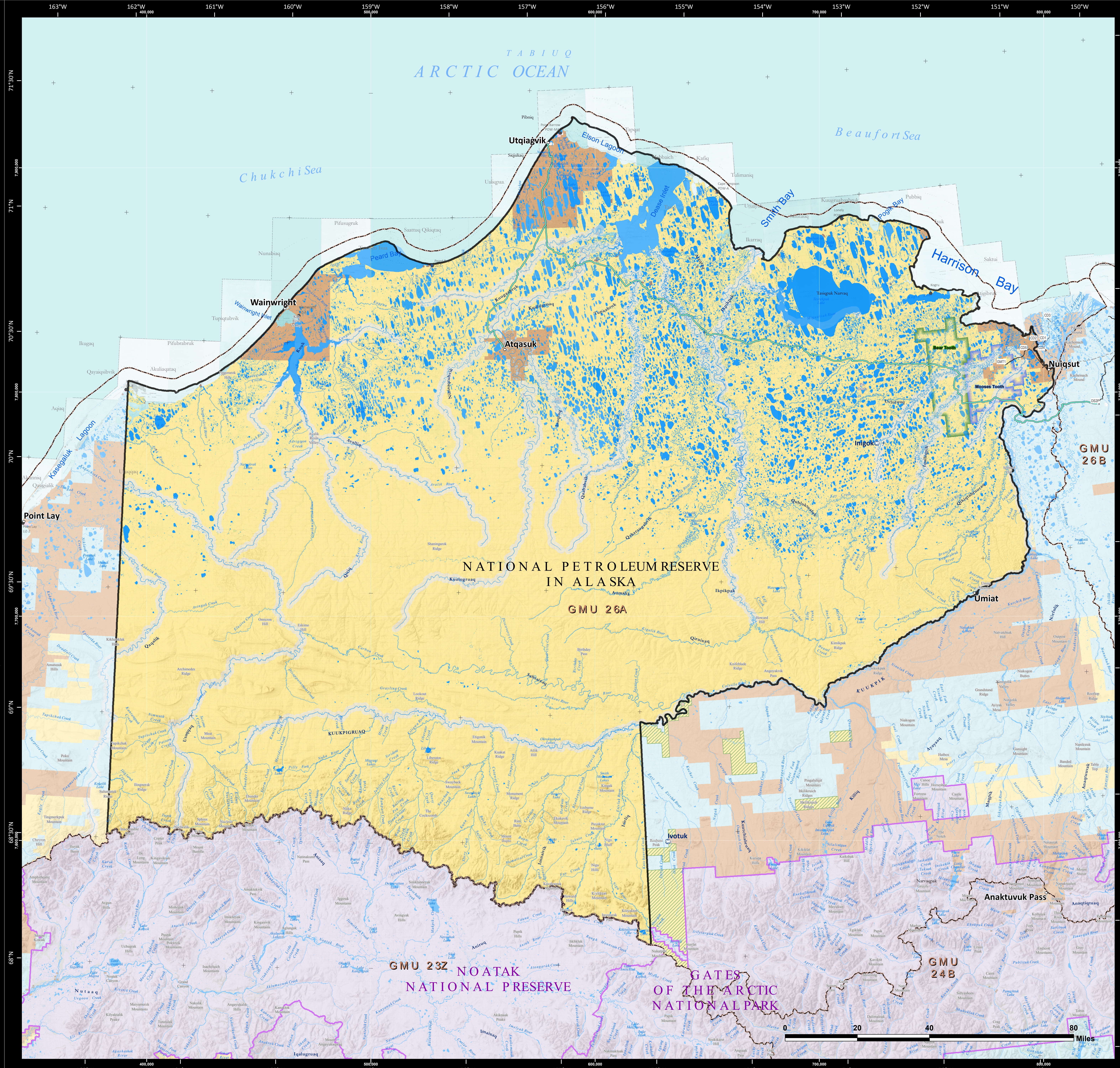
Several rivers provide floating opportunities. Most are located in the southern part of the NPR-A.

Commercial guides offer trips to:

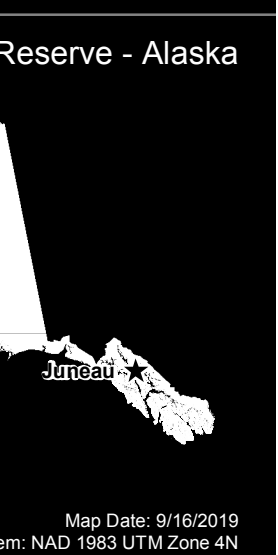
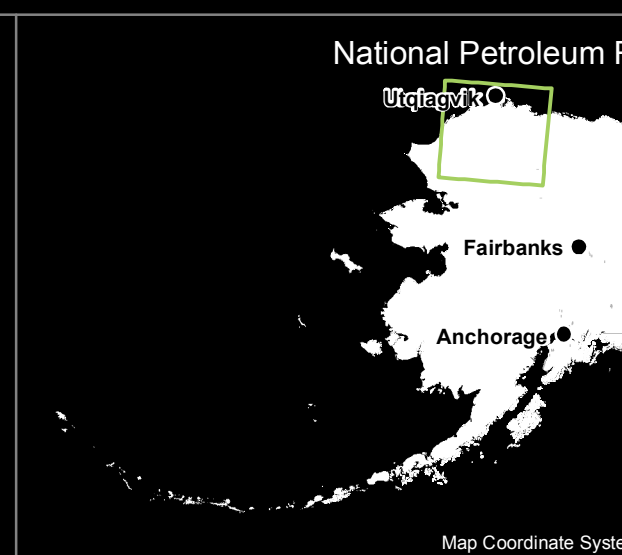
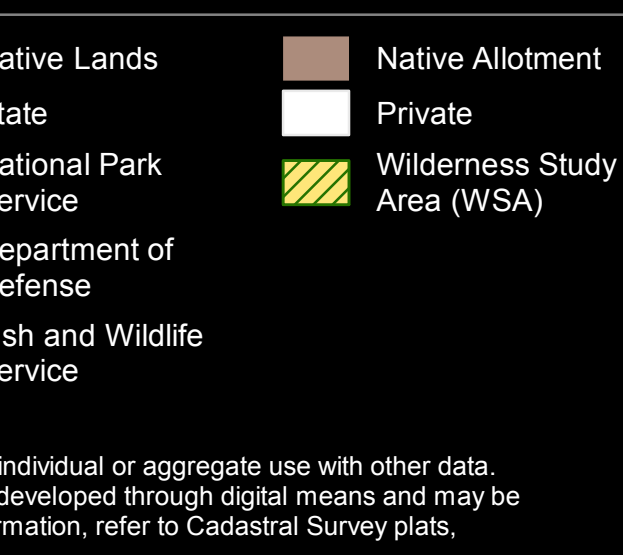
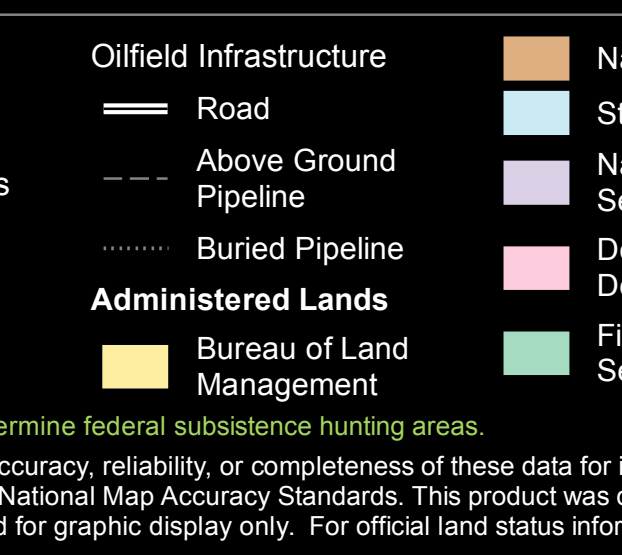
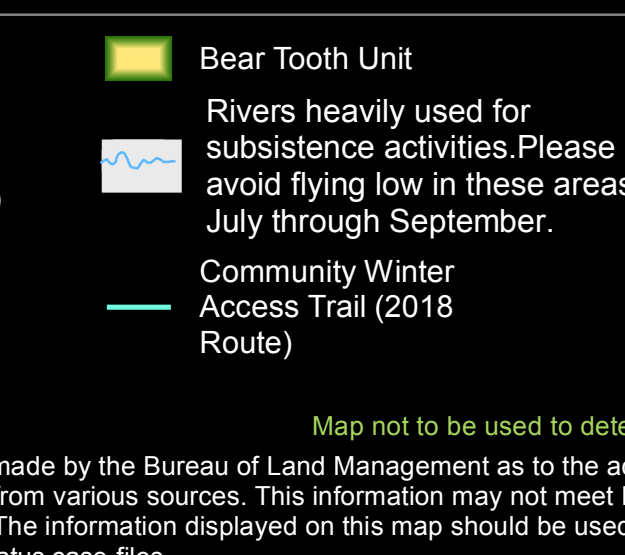
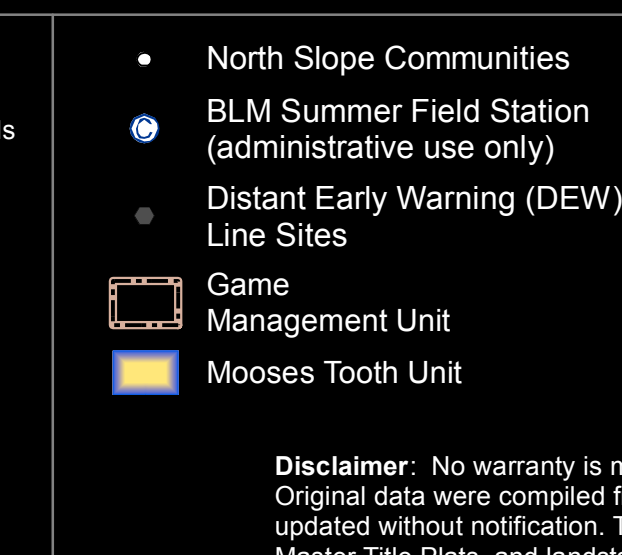
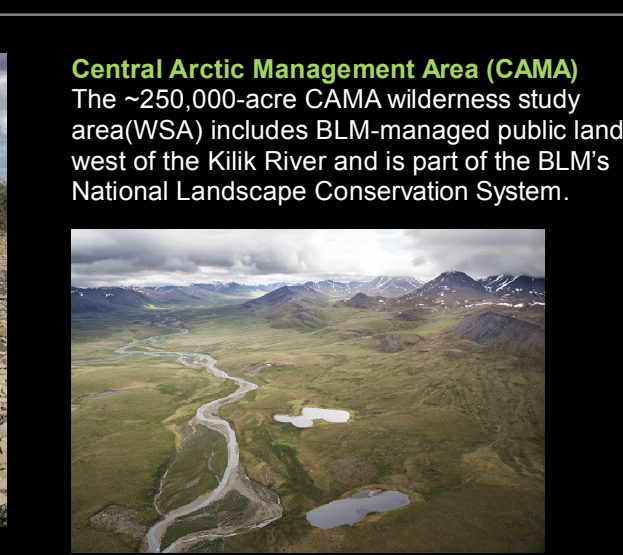
- Kokolik River
- Upper Nigu River to the mouth of the Etivuk and Coivlie rivers
- Utukok River
- Kukpovuk and Pitmegea rivers
- South shore of Teetnekup Lake
- Pitk Dunes



Packrafters on the Utukok River (photo courtesy of ArcticWild)



Beach of the Kilgwa River (photo courtesy of ArcticWild)



- North Slope Communities
- BLM Summer Field Station (administrative use only)
- Distant Early Warning (DEW) Line Sites
- Game Management Unit
- Mooses Tooth Unit
- Bear Tooth Unit
- Rivers heavily used for subsistence activities. Please avoid flying low in these areas July through September.
- Community Winter Access Trail (2018 Route)
- Oilfield Infrastructure
- Road
- Above Ground Pipeline
- Buried Pipeline
- Administered Lands
- Bureau of Land Management
- Native Lands
- State
- National Park Service
- Department of Defense
- Fish and Wildlife Service
- Native Allotment
- Private
- Wilderness Study Area (WSA)

Map not to be used to determine federal subsistence hunting areas.

Disclaimer: No warranty is made by the Bureau of Land Management as to the accuracy, reliability, or completeness of these data for individual or aggregate use with other data. Original data was compiled from various sources. This information may not meet National Map Accuracy Standards. This product was developed through digital means and may be updated without notification. The information displayed on this map should be used for graphic display only. For official land status information, refer to Cadastral Survey plats, Master Title Plats, and landstatus case-files.

**Contact Information**

Bureau of Land Management  
Fairbanks District Office  
222 University Avenue  
Fairbanks, Alaska 99709  
Phone: 907-474-2200  
<https://www.blm.gov/alaska>

Alaska Department of Fish & Game  
Fairbanks Office  
1300 College Rd  
Fairbanks, Alaska 99701-1551  
Phone: 907-459-7206  
<http://www.adfg.alaska.gov>

**National Petroleum Reserve - Alaska**

Map Coordinates System: NAD 1983 UTM Zone 18N