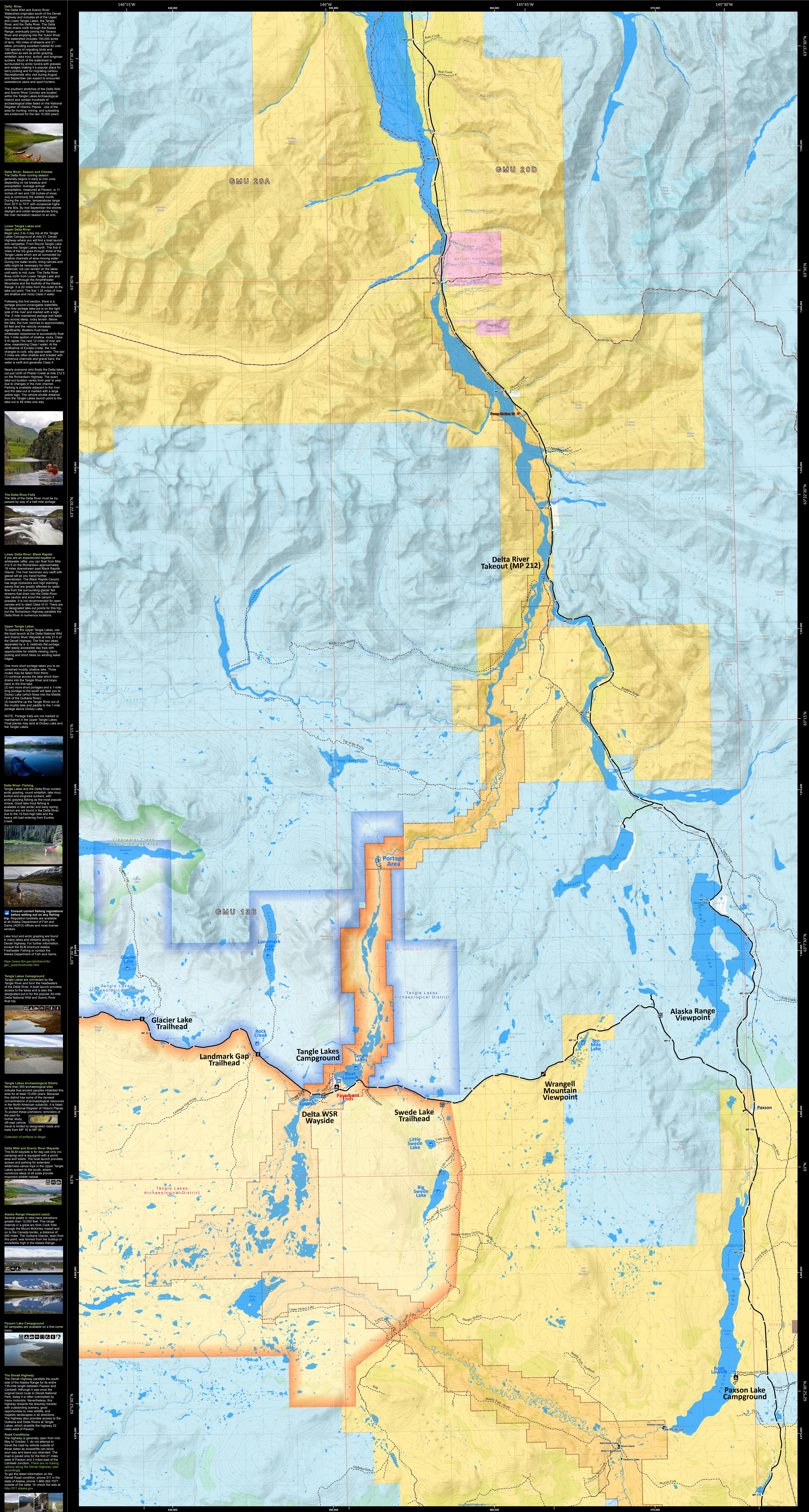


Delta National Wild and Scenic River



Delta River: Season and Climate
The Delta River fishing season generally begins in early to mid-June, depending on ice breakup and precipitation. Average precipitation at Paxson, is 11 inches in July and 120 inches of snow. July is commonly the warmest month with 57°F to 70°F with occasional higher temperatures. August and September are the best time to visit with clear skies and comfortable temperatures.

Lower Tangle Lakes and Upper Tangle Lakes
The Delta River flows from the south to the north. The first 20 miles of the river are in the Tangle Lakes National Monument and the foothills of the Alaska Range. The river flows through the Tangle Lakes National Monument and the foothills of the Alaska Range. It is a 20-mile stretch of river that is a part of the Delta National Wild and Scenic River.

Delta River Takeout (MP 212)
The Delta River Takeout is located at Milepost 212 on the Richardson Highway. It is a 1/2 mile stretch of river that is a part of the Delta National Wild and Scenic River.

Upper Tangle Lakes
The Upper Tangle Lakes are located in the Delta National Wild and Scenic River. They are a series of lakes that are connected by a narrow channel. The lakes are located in the Delta National Wild and Scenic River.

Delta River Fishing
Tangle Lakes and the Delta River contain Arctic grayling, rainbow trout, lake trout, and brook trout. Arctic grayling is the most popular choice. Good lake trout is available in late winter and early spring. Salmon are not present in the Delta River due to the 15-foot high falls and the heavy sediment entering from Eureka Creek.

Tangle Lakes Campground
Tangle Lakes Campground is located in the Delta National Wild and Scenic River. It is a 200-acre campground that is a part of the Delta National Wild and Scenic River.

Delta National Wild and Scenic River Wayside
The Delta National Wild and Scenic River Wayside is located in the Delta National Wild and Scenic River. It is a 20-mile stretch of river that is a part of the Delta National Wild and Scenic River.

Map legend and contact information. Legend includes: Milepost (MP), Road, Trail, Trans-Alaska Pipeline (Pumpstation), Trans-Alaska Pipeline, Wild and Scenic River Corridor, Alaska Game Management Unit (7112016), USGS 1:63,360 Index, Tangle Lakes Archaeological District (BLM), Tangle Lakes Archaeological District (State of Alaska), Clearwater Creek Controlled Use Area, Administered Lands: Bureau of Land Management, Department of Defense, Native Allotment (Private), Private, State of Alaska. Contact Information: Bureau of Land Management, Alaska Department of Fish & Game.