

Final Report

A survey for Yellow-billed Cuckoo in recorded historic and other likely locations in Idaho



Photo by Steve Metz (www.stevemetzphotography.com)
Used with permission

Timothy D. Reynolds and Chad I. Hinckley

August 2005

**TREC, Inc.
4276 E 300 North
Rigby, Idaho 83442
208.745.6913
trec@onwest.net**



Idaho Bureau of Land Management Technical Bulletin 2005-05

INTRODUCTION

The Yellow-billed Cuckoo (*Coccyzus americanus*; YBCU) is a Candidate species for Federal listing as threatened or endangered in several western states, including Idaho. In 2001 the US Fish and Wildlife Service determined that listing this species was warranted, but precluded, by higher priority listing actions (USFWS 2001). The USFWS concluded “the overall magnitude of threats to the Western YBCU DPS (distinct population segment) was high, but the immediacy of the threats was not imminent.” The deterioration of habitat is considered the number one cause for their declining numbers. Nesting pairs require a minimum of approximately five acres of prime riparian habitat, which, in Idaho and much of the west, consists of old growth cottonwoods, with a dense understory of willow or dogwood.

This species is notoriously difficult to observe in the wild. It generally prefers very heavy cover, and is mostly inconspicuous in its habits. Not a true songbird, it is neither particularly vocal, nor is its call particularly far reaching. Because of these traits, this species is relatively unknown in Idaho. Moreover, Idaho is at or near the range limit of this species, thus it is unlikely YBCU in Idaho have ever been numerous. In Idaho, YBCU was considered a rare breeder by Larrison et. al. (1967); more recently Groves (1997) classified it as critically imperiled. Taylor (2000) called it “...one of the most endangered bird species in Idaho,” and concluded “It could easily become extirpated from the state in the near future.” Between 1895 and 2002 there were 42 verifiable records of this species in Idaho (D. Stephens, *in litt.*). Although YBCU has been recorded in ten of the 28 lati-long blocks in the state (Stephens and Sturts, 1991), more than 30% of the historic records have been in the Upper Snake River Basin.

Because there are only a small number of records of YBCU in the state, land and wildlife management agencies do not have solid evidence to either support or argue against listing this species. Similarly, the agencies are uncertain where, or when, management actions for this species would be best implemented.

It is unknown if the lack of records of this species in Idaho indeed signifies an extremely small number and sporadic occurrence of Yellow-billed Cuckoo in Idaho, or if this merely reflects a lack of coordinated effort to detect this secretive species in the state.

OBJECTIVES

There were four primary objectives to this project:

- Conduct a thorough search for additional historic records of this species in Idaho.
- Conduct nest searches in occupied habitat.
- Develop and implement a sampling methodology for YBCU in areas of historic occurrence and in other suitable habitat.
- Based on field sampling success, establish a long-term monitoring protocol with which to monitor this species in areas of known or likely occupation.

MATERIALS AND METHODS

Historic Records. We conducted a search of technical literature, including searches of various “gray-literature” and electronic databases (e.g. Dissertation Abstracts, BBS surveys, etc.) for information on Yellow-billed Cuckoos in Idaho. We also requested information from field notes and personal records from Idaho birders through the IBLE (Idaho Birders Linked Electronically) newsgroup (<http://groups.yahoo.com/group/ible/>). Last, we asked the curators of the vertebrate collections at regional universities and national museums for any records of YBCU from Idaho.

Sampling methodology. Standard, routinized surveys for YBCU recently have been conducted in Arizona, California, and Utah (Magill and Halterman 1999, Halterman et al. 2002, Kozwalski Pers. Comm.). We contacted Magill, Halterman, and Kozwalski, discussed their methodology and lessons learned, and developed a survey protocol and field data sheet consistent with their recommendations. To implement the protocol, we enlisted the help of recognized local birders, tribal biologists, and agency personnel to augment the field effort of TREC, Inc., staff and technicians. Based on our historic record search, we focused our field efforts in and near historic locations throughout Idaho.

Because the majority of historic records were from the Upper Snake River Basin, we examined aerial photographs of the Upper Snake River corridor and eliminated unlikely habitat from our surveys. Subsequently, we surveyed suitable habitat along the entire Snake River corridor from the backwaters of American Falls Reservoir upstream to Palisades Dam, and along the Henry’s Fork of the Snake from the confluence with the South Fork of the Snake upstream to St. Anthony. Access to starting points for pedestrian surveys was by automobile, jet boat and drift boat.

RESULTS

Historic Records. Prior to this study, there were about 40 known records of YBCU in the state from 1895 – 1996 (Stephens *in litt*, Sturts *in litt*; Table 1a, 1b). As of spring, 2003, the Idaho Department of Fish and Game Conservation Data Center had only 10 records for this species in their data base (CDC *in litt*.); only one of which occurred later than, and hence was not included in Stephens’ list.

Our search added over 30 new records through 2002. Many of these records were recent (subsequent to Stephens’ and Sturts’ lists) and came from birders who had YBCU sightings in their field notes but had not reported their observations (Table 1a, 1b). Other records were from gray literature, published accounts, and birder’s journals. Although we include GPS coordinates for historic records, we emphasize that these are merely estimates based on descriptions of locations given in records and reports, many of which were very general (e.g., “Rupert Area”). The GPS coordinates were estimated so that maps could be developed showing a general overview of historic YBCU sightings (Figure 1a, 1b).

Of the 33 museums we contacted (Appendix A) only the Smithsonian, Idaho Museum of Natural History (Idaho State University) and the Conner Museum (Washington State University) had YBCU specimens from Idaho.

Sampling Methodology. Based on our discussions with the YBCU workers in Arizona, California, and Utah, we slightly modified the existing protocol for our surveys (Appendix B) and developed a field data sheet (Appendix C). We examined the historic records and segregated them into five state zones: Northern, Central, Western, South-central, and Southeastern Idaho with 6, 6, 14, 10 and 40 records, respectively. We then made efforts to contact the original observer for each record, or someone familiar with the habitat at each record site, to determine whether the location was currently suitable for YBCU nesting. We omitted sites which were not considered suitable YBCU habitat from our survey plans. We contacted qualified birders in each zone and assembled a team of volunteers to conduct YBCU surveys. We provided the protocol description, call-back tapes, location of historic records, and data sheets to volunteers. We encouraged volunteers to survey not only the sites of historic records, but adjacent areas of similar habitat and other areas of suitable YBCU habitat known to them. Because of the preponderance of historic records from Southeastern Idaho, we augmented the volunteer effort with a team of four technicians assigned to survey the entire Snake River Corridor in suitable habitat from American Falls Reservoir, upstream to Palisades Dam and from the confluence of the Henry's Fork and the South Fork of the Snake River upstream to St. Anthony, Idaho.

Results of 2003, 2004, and 2005 Surveys.

North Idaho. – We identified two sites in Northern Idaho which we believed had suitable YBCU habitat: White Bird Hill and Lawyer Creek. Regrettably, we were initially unable recruit reliable volunteers to survey these areas and, consequently, we were unable to survey these sites in 2003. In 2004 surveys were conducted along White Bird Creek. No YBCU were positively identified. The local Fish and Game non-game biologist opined: “The habitat seems marginal. There are a couple of marginal cottonwood galleries (~50-75m in width) strung together along the creek for a couple of miles (J. Sauder, *in litt*). However, a local landowner, with admittedly little birding experience but with “some of the best cottonwood habitat in the area” (J. Sauder, *in litt*.) reported hearing a calling YBCU in reasonably good habitat on July 24, 2004, near White Bird Creek (Table 3a, 3b). Because of the landowner's lack of birding experience, this was not considered a confirmed record.

A single YBCU was recorded in Coeur d'Alene near the golf course on June 9, 2004 (S. Sturts, *in litt*.) (Table 3a, 3b). This was only the second record from Kootenai County; the first in 109 years!

The area along White Bird Creek where a land owner reported hearing a YBCU in 2004 was surveyed by an experienced birder in 2005. No YBCU were recorded along White Bird Creek and there were no reports on 2005 of YBCU in Northern Idaho. Based on the few historical records and our surveys, we conclude sightings of YBCU are extremely rare in Northern Idaho. The preferred habitat is generally lacking. The few recorded sightings are most likely of

transient, nomadic, or migrant individuals. There are no data to suggest this species historically nested, or currently nests, in Northern Idaho.

Central Idaho. – In 2003 we surveyed Penal Gulch near Challis, Idaho, and along the Big Wood River near Stanton Crossing south of Bellevue, Idaho. No YBCU were observed in Penal Gulch. We believe the habitat here lacks the thick understory preferred by YBCU, and that the historic sightings in Penal Gulch were probably of migrant, vagrant, or transient birds. We did observe YBCU on two occasions south and west of Stanton Crossing, south of Bellevue, Idaho. Two birds were recorded (one observed, one heard) on July 5, and one responded (vocal) to a tape on July 19, 2003 (Table 2a, 2b; Figure 2). One YBCU was recorded in a rural yard just north of Salmon on June 26, 2003.

In 2004, two (possibly three) individual YBCU were recorded at Stanton Crossing on July 2 (Table 3a, 3b; Figure 3). One bird was observed for 1.5 hours, made two calls and disappeared.

Although routine surveys were not conducted near Stanton Crossing in 2005, historic and recent records (2003 and 2004) indicate YBCU occur in the area fairly regularly each year during the breeding season. Consequently, it is likely at least one pair nests in the area. Other suitable habitat on private lands, inaccessible during our surveys, may support other breeding pairs

Western Idaho. – Most of the historic-record sites in this zone do not contain suitable habitat for nesting YBCU. We suspect previous records for Prairie, Dive Creek, Battle Creek/Crane Creek, Thorne Creek and Jarbidge were most likely of migrant, vagrant, or transient birds. Similarly, the Swan Falls Dam area and the Fort Boise Wildlife Management Area (WMA) do not appear to have significant preferred YBCU habitat, although it is possible they did historically. In 2003, we concentrated our surveys in the Southwest Idaho zone at Lake Lowell (Deer Flat National Wildlife Refuge) and along the Weiser River between Cambridge and Goodrich where habitat appeared suitable. Although we conducted four complete rounds of surveys in these areas, no YBCU were recorded in either area.

Based on the 2003 results, we did not conduct routinized surveys in southwestern Idaho in either 2004 or 2005. We were not notified of any sightings by local birders in Western Idaho in 2004 or 2005, nor were any reports of YBCU sightings in western Idaho posted on IBLE. We suspect that YBCU do not breed in Western Idaho.

South-central Idaho. – Like the other zones, many of the historic records in this zone were vague in describing the location of sightings (e.g. “Rupert area”). In 2003, volunteers conducted surveys at two areas in this zone, one with historic records (Lake Walcott State Park [Minidoka National Wildlife Refuge], near Rupert) and another with potentially suitable habitat (Cottonwood WMA, south of Kimberly). In 2003, no YBCU were observed at either site. Because the habitat at Cottonwood WMA did not appear to have the necessary overstory and thick understory components required by YBCU, this area was not surveyed in 2004 or 2005. No YBCU were recorded from Minidoka NWR in 2004.

On May 25, 2005, a single YBCU was sighted near Minidoka National Wildlife Refuge. It was flushed from sagebrush near a riparian zone. This bird was believed to be a migrant bird. This was the only YBCU observed in South-central Idaho in 2005. Data suggest that although Minidoka NWR is an occasional stopover site for migrating YBCU in Idaho, they do not nest there.

Southeast Idaho. – Over half (51% -- 40 of 78) of the historic YBCU records in Idaho were from this zone; most from the Snake River Corridor. In 2003, we examined recent (1997) aerial photographs of the river corridor and determined approximately 150 river miles contained habitat which appeared suitable for YBCU. Between June 1 and July 31, 2003, TREC personnel and volunteers conducted routinized, systematic surveys along the Snake River Corridor. We visited most sites at least twice during 2003, and some three times. Volunteers also conducted surveys at Market Lake WMA and Camas NWR, starting in late May. In 2003, YBCU were recorded on three occasions at Camas NWR (May 25, May 29, and June 8 [two birds]), and once at Market Lake WMA (June 11; Table 2a, 2b; Figure 2). The dates of these sightings, coupled with the fact neither of these areas have extensive habitat of tall overstory and thick understory used by YBCU for nesting, suggest these were migratory or transient birds. We recorded YBCU ten times on the main stem of the Snake River in 2003, generally < 10 km upstream of American Falls Reservoir (Table 2a, 2b; Figure 2, 3). With the exception of Deer Parks Wildlife Mitigation Unit and some adjacent private lands (three birds observed June 11), there is little suitable YBCU nesting habitat between Blackfoot and the confluence of the South Fork and Henry’s Fork of the Snake River. In 2003, YBCU were recorded on 13 occasions along the South Fork of the Snake River (Table 2a, 2b; Figure 2). No YBCU were recorded in 2003 along the upper 30 miles of the South Fork or along Henry’s Fork. Data collected by Tribal biologists on the Ft. Hall Indian Reservation were not made available. No YBCU nests were located in 2003.

In 2004, YBCU were observed in the same general areas: Camas NWR; on the Main Snake River just above American Falls Reservoir and at Deer Parks WMU; and on the South Fork of the Snake River between Lorenzo and Heise (Table 3a, 3b; Figure 3). These areas were routinely surveyed between June 26 and July 30, 2004. On June 26, a pair was observed copulating on Butler Island near the Railroad Crossing (Table 3a, 3b). At least two distinct pairs were observed in 2004 (Table 3b). No YBCU nests were located in 2004.

In 2005, YBCU were observed at Camas NWR, Main Snake River between American Falls Reservoir and Blackfoot, upstream from the Menan Boat Ramp near confluence of the North Fork and South Fork of the Snake River, and on the South Fork of the Snake River Between Heise and Lorenzo (Table 4a, 4b; Figure 4). Although several routine surveys were conducted between May 26 and July 22, 2005, YBCU were observed at Deer Parks WMU. On June 23 near McTucker Creek a pair was observed copulating and carrying sticks into a thick patch of willows (Table 4a, 4b). On June 14 near Twin Bridges, on the South Fork of the Snake River, a possible nest from the previous year was located (Table 4a, 4b). Three pairs and one single YBCU were observed immediately south of Twin Bridges on June 16, 2005. In subsequent surveys, no more than three individuals were recorded. Along with two (possibly three) adults, a

juvenile YBCU was observed on July 14 on the South Fork of the Snake River below the Railroad Crossing (Table 4a, 4b), thus confirming successful nesting of YBCU in the area in 2005. In 2005 a minimum of five pairs of YBCU were observed along the Upper Snake River corridor in 2005 (Table 4a, 4b).

Rare Animal Observation Report Forms were filled out for each 2003, 2004, and 2005 YBCU record and submitted to Idaho Department of Fish and Game’s Conservation Data Center (Appendix D, IDF&G Copy only).

CONCLUSIONS

Historic records suggest that although YBCU have been recorded in scattered locations throughout the state, YBCU have never been particularly abundant in Idaho. The few historic records prior to 2002 (78 records in > 100 years) suggest YBCU are extremely rare in Idaho. Although we tallied over 90 sightings in the past three years, many of these birds were likely migrants or transients, and some of our records were likely repeats of the same birds. Hence, we conclude Yellow-billed Cuckoos are indeed rare migrants and summer residents in Idaho. Historic records and our surveys both indicate YBCU are most abundant in Southeastern Idaho, particularly along the Snake River corridor. No YBCU have recently been reported from the western side of the state. Whether historic records were of migratory or transient birds, or whether there has been significant changes in YBCU habitat is unknown. Based on the dates we observed birds, it is likely YBCU nested in Idaho in five locations: (1) near Stanton Crossing, in Blaine County in 2003 and 2004, (2) along the main stem of the Snake River below Tilden Bridge in 2003, 2004, and 2005, (3) near Menan at Deer Parks WMU in 2003 and 2004, (4) along the South Fork of the Snake River near Twin Bridges in 2003, 2004, and 2005, and (5) on Butler Island not far from the Railroad Bridge over the South Fork of the Snake River north of Archer in 2003, 2004, and 2005. The gallery cottonwood community along the Snake River above American Falls Reservoir and near Deer Parks WMU, and along the South Fork of the Snake River from below Heise to the Lorenzo Bridge, appears to be the stronghold for YBCU in Idaho. In 2004 and 2005, strong evidence was found to confirm breeding (copulations were observed) and suggest nesting (e.g. YBCU carrying nesting material) in these stronghold areas. The observation of a juvenile YBCU in 2005 near the Railroad Bridge on the South Fork of the Snake confirms at least one successful nesting attempt.

It was our intention for this project to conduct surveys at sites where YBCU were historically recorded and, presumably, in the best remaining YBCU habitat in Idaho. We also recognize the probability that other suitable habitat elsewhere in the state was not surveyed. None-the-less, we believe we have identified most, if not all, of the strongholds for the species in the state. Based on our results, we estimate the statewide nesting population at fewer than 20 pairs, and in all likelihood, closer to 10 pairs in an average year.

For long-term monitoring of the status of the YBCU in Idaho, we suggest weekly call-back surveys during the month of June at the stronghold locations: Stanton Crossing, McTucker Creek, Deer Parks, Twin Bridges, and the Railroad Crossing over the South Fork of the Snake River near Archer. Surveys should follow our established protocol.

ACKNOWLEDGEMENTS

Funding for this project was provided by the Idaho Department of Fish and Game through the State Wildlife Grant Program, the USDA Forest Service, Caribou-Targhee National Forest Challenge Cost Share/Partnership Program, and the USDA BLM Idaho Falls Field Office Challenge Cost Share Program. Brigham Young University, Idaho, the Shoshone Bannock Tribes, and the Idaho Department of Fish and Game, and TREC, Inc., provided in-kind support. TREC, Inc., technicians conducting surveys in 2003 were Jenny Ricks, Carrie Jo Cobb, Jeremy Dodds, and Chad Hinckley. Jenny Ricks coordinated the technician and volunteer survey efforts along the Snake River, and organized the 2003 data. Troy Parkin, BYU-I, and Jenny Ricks researched and assembled the majority of the historic YBCU records. TREC technicians in 2004 were Cam Collins, Chad Hinckley, Troy Parkin, Lori Hansen, and Adam St.Saviour. Chad Hinckley consolidated 2004 data and developed GIS maps. TREC technicians in 2005 were Chad Hinckley and Cam Collins. Field volunteers and others providing records of YBCU sightings included Craig Fosdick, Dave Stricklan, Sherry Whitfield, Jason Wright, Kit Struthers, Charles Trost, Eddie Chew, Steve Bouffard, Darren Clark, Greg Rice, Elise Faike, Joel Tinsley, Robert Davis, Joseph Timchak, Jonathan Dudley, Mark Collie, Kent Fothergill, Carol Morris, Tim Cramer, and Patty Isaëff. We thank Karen Rice, Joe Lowe, Monica Zimmerman, Josh Rydalch and Jason Wright, of the BLM, for helping us gain access to lands and providing a jet boat on several occasions. We particularly thank Bud Alford of the Forest Service, for his generous donation of time, supplies, and other support in 2003. In 2003, David Anderson, former Idaho Department of Fish and Game Manager of the Deer Parks Wildlife Mitigation Unit, provided access and assistance surveying the WMU. In 2004, Pam O’Hearn did the same. We thank Dr. Dan Stephens, Wenatchee Valley College, for providing his list of historic sightings prior to 1996. We also thank Shirley Struts for sharing her data base and identifying an error on historic sightings in our 2003 report. We give special thanks to Mr. Dave Stricklan, BYU-I, for his keen interest, beneficial discussions, and solid support (time, materials, and intellectual effort) for this project.

LITERATURE CITED

- Burleigh, T.D. 1972. Birds of Idaho. The Caxton Printers, LTD., Caldwell, ID.
- Davis, W.B. 1935. An analysis of the bird population in the vicinity of Rupert, Idaho. Condor 37:233-238.
- Groves, C.R., B. Butterfield, A. Lippincott, B. Csuti, and J.M. Scott. 1997. Atlas of Idaho's Wildlife. Idaho Department of Fish and Game Nongame and Endangered Wildlife Program, Boise.
- Halterman, M.D., T. Corman, M. Johnson and R. Magill. 2002. Draft Western Yellow-billed Cuckoo Natural History Summary and Survey Methodology. Southern Sierra Research Station, Weldon, CA.
- Larrison, E. J., J. L. Tucker, and M. T. Jollie. 1967. Guide to Idaho birds. J. Idaho Acad. Sci. 5: 1-220.
- Magill, R.T and M.D. Halterman. 1999. Natural history and suggested survey methods for western Yellow-billed Cuckoos in Arizona. Draft unpublished manuscript. Arizona Game and Fish Department, Nongame Branch, Phoenix, AZ.
- Merrill, J.C. 1897. Notes on Birds of Fort Sherman, Idaho. Auk 14:353.
- National Audubon Society 1996. Audubon Field Notes 50:974.
- Rogers, T.H. 1978. Northern Rocky Mountain Intermountain Region. American Birds 32:1034, 1188.
- Rogers, T.H. 1979. Northern Rocky Mountain-Intermountain Region. American Birds 33:882.
- Rogers, T.H. 1981. Northern Rocky Mountain-Intermountain Region. American Birds 35:962.
- Rogers, T.H. 1982. Northern Rocky Mountain-Intermountain Region. American Birds 36:(unk).
- Rogers, T.H. 1984. Northern Rocky Mountain-Intermountain Region. American Birds 38:1042.
- Rogers, T.H. 1985. Northern Rocky Mountain-Intermountain Region. American Birds 39:940.
- Rogers, T.H. 1986. Northern Rocky Mountain-Intermountain Region. American Birds 40:501.
- Rogers, T.H. 1991. Northern Rocky Mountain-Intermountain Region. American Birds 42:1139-1141.

Stephens, D. A. and S. H. Sturts. 1991. Idaho bird distribution. Idaho Museum of Natural History, Special Publication No. 11. 76 pp.

Taylor, D.M. 2000. Status of the Yellow-billed Cuckoo in Idaho. *Western Birds* 31:252-254.

Taylor, D.M., and C.H. Trost. 1987. The status of rare birds in Idaho. *Murrelet* 68: 69-93.

USFWS 2001. Update and refresh records on rules adopted in 1996 local competition docket. 66 FR 143:38611-38626.

Weber, J.W. and E.J. Larrison. 1977. *Birds of southeastern Washington*. University of Idaho Press, Moscow.

Table 1a. Verified historic sightings of Yellow-billed Cuckoo in Idaho

| Record No. ^A | Date | Year | Observer | # Observed | Location | Zone | UTMs ^B | |
|-------------------------|-----------|---------|-------------------|------------|--|------|-------------------|----------|
| | | | | | | | Easting | Northing |
| 1 | 7.30 | 1895 | JCME ^C | 1 | Fort Sherman (Coeur D'Alene area) | 11 | 516858 | 4830763 |
| 2 | 6.13 | 1913 | | 1 | Weiser | 11 | 502794 | 4900381 |
| 3 | 5.16 | 1918 | WBDA | Rare | Rupert Area, Minidoka Co. | 12 | 286854 | 4833793 |
| 4 | 7.22 | 1922 | FHKE | 3 egg set | Rupert, Minidoka Co. | 12 | 282077 | 4724486 |
| 5 | 6.01 | 1966(?) | LOJE | Many | White Bird Hill | 11 | 556981 | 5072158 |
| 6 | 06.06 | 1978 | JIHE | 1 | Ft. Boise WMA, Canyon Co. | 11 | 500765 | 4850587 |
| 7 | 7.02 | 1978 | JDHI | 1 | Minidoka WMA; manager's residence window | 12 | 281256 | 4728920 |
| 8 | 05.15 | 1978 | GEAS | 2 | Ft. Boise WMA, Canyon Co. | 11 | 500772 | 4850714 |
| 9 | Summer | 1978 | DAST | 2 | Lake Lowell | 11 | 524561 | 4822617 |
| 10 | 7.01 | 1979 | PRCO | 2 | Prairie, Elmore CO. | 11 | 609843 | 4819343 |
| 11 | 8.01 | 1979 | MAMC | Many | Lawyer Creek | 11 | 555236 | 5113300 |
| 12 | 8.01 | 1980 | DAWA | 3 | Cartier Slough WMA | 12 | 426868 | 4852438 |
| 13 | 7.03 | 1981 | CHTR | 1 | Portneuf River below Pocatello | 12 | 377227 | 4750780 |
| 14 | 6.19 | 1982 | MICA | 1 | S. Fork Payette River, W of Lowman | 11 | 610498 | 4882099 |
| 15 | Late June | 1983 | MACO | 1 | Grimes Pass | 11 | 595216 | 4879354 |
| 16 | 6.01 | 1984 | JERU | 1 | Twin Falls | 11 | 707612 | 4717949 |
| 17 | 6.24 | 1984 | KIST | 1 | Minidoka WMA | 12 | 297427 | 4727965 |
| 18 | 07.18 | 1984 | WISH | 1 | Rupert | 12 | 274099 | 4721876 |
| 19 | 7.28 | 1984 | WISH | 2 | Rupert | 12 | 274099 | 4721876 |
| 20 | 8.10 | 1984 | KADU | 1 | Corner of Pine Cone Rd. & Indian Hills Dr. | 11 | 501139 | 5174350 |
| 21 | 8.24 | 1984 | CHTR | 1 | Pocatello | 12 | 382986 | 4746428 |
| 22 | 5.23 | 1985 | JICL, ALSA | 3 | Dive Creek | 11 | 690684 | 4819268 |
| 23 | 6.22 | 1985 | CHTR | 1 | Swan Falls Dam south | 11 | 550254 | 4787856 |
| 24 | 06.26 | 1985 | WISH, JOSH | 1 | Rupert | 12 | 274099 | 4721876 |
| 25 | 6.29 | 1985 | KIST | 1 | Minidoka WMA | 12 | 295668 | 4727368 |
| 26 | 07.01 | 1985 | JOTI | 1 | Pocatello | 12 | 382986 | 4747958 |
| 27 | 7.04 | 1985 | CHTR | 3 | McTucker Creek | 12 | 366646 | 4766013 |
| 28 | 04(?):01 | 1986 | JOTI | 1 | Blackfoot | 12 | 391046 | 4782694 |
| 29 | 06.01 | 1986 | CHTR | 1 | Shelley/Firth | 12 | 405388 | 4803697 |
| 30 | 06.01 | 1986 | JOTI | 2 | Blackfoot | 12 | 391046 | 4782694 |
| 31 | 6.08 | 1986 | CTRO | 1 | Firth – window kill | 12 | 402721 | 4795682 |
| 32 | 07.25 | 1986 | WISH | 1 | Rupert | 12 | 274099 | 4721876 |



Table 1a. Verified historic sightings of Yellow-billed Cuckoo in Idaho

| Record No. ^A | Date | Year | Observer | # Observed | Location | Zone | UTMs ^B | |
|-------------------------|------------|--------|------------|------------|--|------|-------------------|----------|
| | | | | | | | Easting | Northing |
| 33 | 7.26 | 1986 | CHTR | 2 | Tilden Bridge area | 12 | 377340 | 4775375 |
| 34 | Unknown | < 1987 | UNKN | 2 | Kendrick | 11 | 527621 | 5162878 |
| 35 | 05.01 | 1987 | WISH | 1 | Rupert | 12 | 274099 | 4721876 |
| 36 | 6.12 | 1988 | CHTR | 3 | Tilden Bridge south | 12 | 376170 | 4775397 |
| 37 | 06.20 | 1988 | MARA | 1 | 3 mi east of Rigby | 12 | 421810 | 4835718 |
| 38 | 7.04 | 1990 | CHTR | 1 | Tilden Bridge | 12 | 378108 | 4838401 |
| 39 | June | 1991 | VISA | 2 | Near Rexburg | 12 | 429459 | 4855298 |
| 40 | July & Aug | 1991 | ALLA, DAHA | Multiple | Daggett Creek | 11 | 582279 | 4836486 |
| 41 | 6.21 | 1991 | VISA | 3 | Snake River/Sunnydell West Quad. | 13 | 434570 | 4836953 |
| 42 | 6.24 | 1991 | HABR | 1 | Snake River/Sunnydell West Quad. | 12 | 434569 | 4836952 |
| 43 | 6.25 | 1991 | VISA | 1 | Snake River/Sunnydell West Quad. | 12 | 436772 | 4836952 |
| 44 | 7.4 | 1991 | JOTI | 3 | Snake River | 12 | 375974 | 4775011 |
| 45 | 7.15 | 1991 | HABR | 1 | Snake River/Butler Island | 12 | 444022 | 4831546 |
| 46 | 7.17 | 1991 | HABR | 1 | Snake River/ LaBelle Northeast Quad | 12 | 431861 | 4841080 |
| 47 | 5.01(?) | 1992 | VISA | 2 | South Fork of Snake River, Island (Butler Island?) | 12 | 440681 | 4834822 |
| 48 | 7.15 | 1992 | DOJO | 1 | Moscow, ID | 11 | 509890 | 5258908 |
| 49 | 07.22 | 1995 | CAVV | 1 | Main Snake; Tilden Bridge | 12 | 376970 | 4776056 |
| 50 | 6.23 | 1996 | JODO | 2 | Butte Creek (Battle Creek?) | | UNKNOWN | |
| 51 | 7.07 | 1996 | JOGA | 1 | Mud Lake WMA | 12 | 388556 | 4868823 |
| 52 | 7.14 | 1996 | CHTR | 2 | Camas NWR | 12 | 398650 | 4868715 |
| 53 | 07.07 | 1997 | POWP, BRST | 1 | Hayspur Fish Hatchery | 11 | 727001 | 4806345 |
| 54 | 5.29 | 1998 | CHTR | 1 | Tilden Bridge | 12 | 376975 | 4775965 |
| 55 | 06.08 | 1999 | MACO, FLKN | 1 | SE Boise, Barber Park | 11 | 571752 | 4822833 |
| 56 | Summer | 1999 | VISA | Few pairs | Ririe, Twin Bridges | 12 | 440235 | 4834994 |
| 57 | 6.24 | 2000 | DOGI | 1 | 560 Church St., Newdale | 12 | 451501 | 4859881 |
| 58 | 6.25 | 2000 | ELFA | 1 | Penal Gulch, Challis | 11 | 723908 | 4935338 |
| 59 | 7.02 | 2000 | JAWE | 1 | Challis | 11 | 730451 | 4827204 |
| 60 | 7.1 | 2000 | GEDE | 1 | Camas NWR | 12 | 399133 | 4869333 |
| 61 | 07.15 | 2000 | COSW | 2 | Boise | 11 | 564112 | 4829087 |
| 62 | 8.03 | 2000 | MAJO | 1 | NE Boise, Near Thorn Creek | 11 | 587053 | 4844251 |
| 63 | 5.28 | 2001 | DAMI | 1 | Camas NWR | 11 | 399505 | 4865634 |
| 64 | 6.24 | 2001 | DATR | 4 | Big Wood River/ Hwy 20 | 11 | 716190 | 4800678 |

Table 1a. Verified historic sightings of Yellow-billed Cuckoo in Idaho

| Record No. ^A | Date | Year | Observer | # Observed | Location | Zone | UTMs ^B | |
|-------------------------|-------------|------|----------|------------|--|------|-------------------|----------|
| | | | | | | | Easting | Northing |
| 65 | 6.25 | 2001 | KAJO | 1 | 4770 E. 65 S. Idaho Falls | 12 | 417627 | 4810081 |
| 66 | June & July | 2001 | MAJO | Unknown | Thorn Creek | 11 | 597577 | 4844570 |
| 67 | 7.09 | 2001 | CLWE | 1 | 1.5 miles below Twin Bridges | 12 | 436011 | 4837860 |
| 68 | 7.09 | 2001 | CLWE | 1 | South Fork Snake River, 3 miles N of Ririe | 12 | 437118 | 4834193 |
| 69 | 7.12 | 2001 | CLWE | 1 | 1-2 miles above Byington access | 12 | 446871 | 4829431 |
| 70 | 7.19 | 2001 | JOTI | 1 | Jensen's Grove, Blackfoot | 12 | 390055 | 4784812 |
| 71 | 5.22 | 2002 | DACL | 1 | Camas NWR | 12 | 397938 | 4865782 |
| 72 | 6.05 | 2002 | GRR1 | 1 | Market Lake | 12 | 408758 | 4847695 |
| 73 | 6.06 | 2002 | GRR1 | 1 | Market Lake | 12 | 405865 | 4849996 |
| 74 | 6.17 | 2002 | GRR1 | 1 | Medicine Lodge | 12 | 387749 | 4901664 |
| 75 | 6.23 | 2002 | CLWE | 1 | Confluence of Henry's Fork & Teton River | 12 | 432569 | 4860857 |
| 76 | 7.19 | 2002 | BUAL | 1 | Upstream from Heise Bridge | 12 | 444442 | 4831807 |
| 77 | 8.11 | 2002 | JIKL | 1 | Jarbridge, Owyhee Co. | 11 | 611023 | 4687186 |
| 78 | 9.05 | 2002 | CLWE | 1 | South Fork Snake River, below Twin Bridges | 12 | 439573 | 4835046 |

^A Bolded numbers are historic records from D. Stephens and/or S. Sturts (e-mail data bases)

^B With few exceptions, locations are best estimates based on available data; datum generally NAD 27.

^C Observer Codes

| | | | | | |
|------|---------------------|------|------------------------------|------|---------------------|
| ALLA | Al Larsen | FHKE | F.H. Kenagy | JAWE | Jane Westervitt |
| ALSA | Alan Sands | GEDE | Gerry Deustcher | KDUM | Kas Dumroese |
| BUAL | Bud Alford | GEAS | Golden Eagle Audubon Society | KAJO | Karen Jones |
| BRST | Brian Sturges | GRR1 | Greg Rice | KIST | Kit Struthers |
| CAVV | Carole Vande Voorde | HABR | Harold Brown | LOJE | Lois Jenkins |
| CHTR | Chuck Trost | JICL | Jim Clark | MACO | Mark Collie |
| CLWE | Cliff Weiss | JIHE | Jim Heckathorn | MICA | Mike Carmondy |
| DACL | Darren Clark | JDHI | J.D. Hill | MAJO | Marlin Jones |
| DAHA | Dave Hazelton | JODO | John Doremus | MAMC | Marlene McKee |
| DAWA | Dave Wagner | JOGA | John Gatchet | PRCO | Pricilla Cook |
| DOGI | Doug Gibson | JIKL | Jim Klott | POWP | Poo Wright Pullman |
| DOJO | Don Johnson | JCME | J.C. Merrill | SSTU | Shirley Sturts |
| DAMI | Dale Miller | JRIC | Jenny Ricks | UNKN | Unknown |
| DAST | Dan Stephens | JERU | Jeff Ruprecht | WBDA | William B. Davis |
| DATR | Dave Trochlell | JOTI | Joel Tinsley | WISH | William Shillington |
| ELFA | Elaine Faike | JOSH | John Shipley | VISA | Vickie Saab |



Table 1b. Notes and references for Verified historic sightings of Yellow-billed Cuckoo in Idaho

| Record No. | NOTES | REFERENCE |
|------------|--|---|
| 1 | | Merrill 1897 |
| 2 | USNM No. 240097; Locater Q08B12. Collected by L.E. Wyman | |
| 3 | Nest found in Rupert vicinity by Dr. Fayer Kenagy | Davis 1935 |
| 4 | Collector: F H Kenagy | Burke Museum: U. Washington |
| 5 | About a dozen birds nesting | Larrison et al., 1967 |
| 6 | One banded | Rogers 1978 |
| 7 | J.D. Hill | Taylor 2000 |
| 8 | | Rogers 1978 |
| 9 | | Rogers 1978 |
| 10 | | Rogers 1979 |
| 11 | Possible Nesting Area | Idaho Conservation Data Center |
| 12 | Probable Nesting Area | Idaho Conservation Data Center |
| 13 | | Rogers 1981 |
| 14 | | Rogers 1982 |
| 15 | | Note from Mark Collie to T. Reynolds Sept '03 |
| 16 | Window Kill | Rogers 1984 |
| 17 | | Struthers Journal Entry |
| 18 | One bird | Rogers 1984 |
| 19 | Bill Shillington | Rogers 1984 |
| 20 | Moscow | K. Dumroese, Journal Entry |
| 21 | IMNH Specimen #2149 | Taylor 2000 |
| 22 | Probable Nesting Area; Observed by Boise District BLM | Idaho Conservation Data Center |
| 23 | Probable nesting area; heard one bird just above dam at 2000 hrs. | Trost Journal Entry |
| 24 | Stayed until July 29 | Rogers 1985 |
| 25 | South Side of the River, Cottonwoods | K Struthers, Journal Entry |
| 26 | Bannock Co. | S. Sturts data base (Am Birds 39: 940) |
| 27 | Probable Nesting Area; Saw 1, heard 2. Near Snake River entrance to American Falls Reservoir | Idaho Conservation Data Center |
| 28 | One Bird | S. Sturts data base (Rogers 1986) |
| 29 | Window Kill. IMNH Specimen #2476 | Taylor 2000 |
| 30 | Two heard in early June | S. Sturts data base (Am Birds 40:1231) |
| 31 | | Rogers 1986 |
| 32 | Stayed around until late July | S. Sturts data base (Am. Birds 40:1231) |
| 33 | First - 1/2 mi below Bridge, Bingham County near trout farm. 2nd - 2 hour float | Trost Journal Entry |



Table 1b. Notes and references for Verified historic sightings of Yellow-billed Cuckoo in Idaho

| Record No. | NOTES | REFERENCE |
|------------|--|--|
| | downstream | |
| 34 | | Weber & Larson 1977 (in Taylor 2000) |
| 35 | Bird lingered (but no dates given) | S. Sturts data base (Am Birds 41:465) |
| 36 | Probable nesting area; One near boat ramp, two along N. bank three miles down river | Trost Journal Entry |
| 37 | In yard | S. Sturts data base (Rare Bird Report 9-B-88) |
| 38 | One responded to a tape about two hours float down from Tilden Bridge | Trost Journal Entry |
| 39 | Along South Fork of Snake River | Rogers 1991 |
| 40 | Multiple "mobs" : Second hand report | Note from M. Collie to T. Reynolds Sept. 2003 |
| 41 | Observed one bird calling at 6:45. Heard one calling at 8:55 | Idaho Conservation Data Center |
| 42 | Heard one call | Idaho Conservation Data Center |
| 43 | Probable Nesting Area; Observed one bird calling at 10:30 | Idaho Conservation Data Center |
| 44 | Between Blackfoot and American Falls Reservoir | Rogers 1991 |
| 45 | Probable Nesting Area; Seen by Harold Brown at 0900: Reported by Vicki Saab | Idaho Conservation Data Center |
| 46 | Probable Nesting Area; Seen by Harold Brown: Reported by Vicki Saab | Idaho Conservation Data Center |
| 47 | Adults incubating and perched near nest | Status Change Form |
| 48 | Hit window; prepared as specimen Conner Museum, #03-527 | Report from DJOH to SSTU |
| 49 | One observed by several observers | S. Struts data base (Birdnotes Sep. 1995) |
| 50 | Pair | NAS Field Notes 50:974 1996 |
| 51 | | NAS Field Notes V50:974 1996 |
| 52 | Two responded to tape, first grove of Cottonwoods near headquarters | Trost Journal Entry |
| 53 | | ID Birders Linked Electronically (IBLE) |
| 54 | Came to a tape played in riparian bottomlands along Snake, 2 miles down river from Tilden Bridge | Trost Journal Entry |
| 55 | Single bird | Note from M. Collie to T. Reynolds, Sept. 2003 |
| 56 | Few nesting pairs found through the season: Probable Nesting Area | Taylor 2000 |
| 57 | Found dead near Woodshed | IBLE, Specimen |
| 58 | Very vocalized, perched in bare tree | IBLE |
| 59 | Same bird seen by Elise Faike on June 25, 2000 | IBLE |
| 60 | Camas NWR, flew into large Cottonwoods, NE of Headquarters | IBLE |
| 61 | One pair with fledgling observed | North American Birds 54(4): 403 |
| 62 | Junction of Thorn Creek Rd. and FR 203 (Bald MT. Rd.); Probably a migrant | IBLE |
| 63 | Seen with Black-Billed Cuckoo, IBLE 2287 | IBLE |
| 64 | Close to Stanton crossing | Idaho Conservation Data Center |



Table 1b. Notes and references for Verified historic sightings of Yellow-billed Cuckoo in Idaho

| Record No. | NOTES | REFERENCE |
|------------|---|--|
| 65 | Window kill; found dead on porch (ISU) | IBLE |
| 66 | Second hand report | Note: M. Collie to T. Reynolds, Sept. 2003 |
| 67 | Where power lines cross | Weiss Journal Entry |
| 68 | Single Adult | IBLE |
| 69 | Heard it once; not positive ID | IBLE |
| 70 | Flew into Cottonwoods alining river | IBLE |
| 71 | Flew low in Box Elders and flushed high into cottonwoods | IBLE |
| 72 | Around 10:00 -11:00 in the morning | IBLE |
| 73 | Western shelterbelt of Market Lake | IBLE |
| 74 | NW of Dubois | IBLE |
| 75 | Located 80 yards up the Teton River | Weiss Journal Entry |
| 76 | Responded to call; mature Cottonwood stand, brush understory | Idaho Conservation Data Center |
| 77 | Small tree-covered island, SW of Sparlin Island, S of Bennett Ck. | Rare Animal Observation Report |
| 78 | "kowlp" call repeated over and over | IBLE |

^A Bolded numbers are historic records from D. Stephens and/or S. Sturts (e-mail data bases)

Table 2a. 2003 Yellow-billed Cuckoo records

| Record | Date | Year | Observer ^A | No. Obs | Location | UTM | | | |
|--------|-------|------|-----------------------|---------|-------------------------------------|--------|------|---------|----------|
| | | | | | | Datum | Zone | Easting | Northing |
| 1 | 05.25 | 2003 | CHTR | 1 | Camas NWR | NAD 27 | 12 | 399133 | 4869333 |
| 2 | 05.25 | 2003 | FRRE | 1 | McTucker Creek | NAD 27 | 12 | 366646 | 4766013 |
| 3 | 05.28 | 2003 | JERI | 1 | Stinking Springs | WGS 83 | 12 | 447590 | 4828136 |
| 4 | 05.29 | 2003 | DACL | 1 | Camas NWR | NAD 27 | 12 | 399133 | 4869333 |
| 5 | 06.05 | 2003 | JERI | 1 | Twin Bridges | WGS 83 | 12 | 438594 | 4835832 |
| 6 | 06.06 | 2003 | DACL | 1 | South Fork of Snake River | NAD 27 | 12 | 439982 | 4834429 |
| 7 | 06.06 | 2003 | DACL | 1 | South Fork of Snake River | NAD 27 | 12 | 440104 | 4834808 |
| 8 | 06.06 | 2003 | DACL | 1 | South Fork of Snake River | NAD 27 | 12 | 439775 | 4835101 |
| 9 | 06.07 | 2003 | JOTI | 1 | Snake River below Blackfoot | NAD 27 | 12 | 377458 | 4781512 |
| 10 | 06.08 | 2003 | GRR1 | 2 | Camas NWR | NAD 27 | 12 | 398650 | 4868715 |
| 11 | 06.11 | 2003 | JERI | 3 | Deer Parks Wildlife Mitigation Area | WGS 83 | 12 | 418422 | 4846651 |
| 12 | 06.11 | 2003 | GRR1 | 1 | Market Lake | NAD 27 | 12 | 405865 | 4849996 |
| 13 | 06.12 | 2003 | CHTR | 1 | Riverton Sportsmans Access | NAD 27 | 12 | 381410 | 4778105 |
| 14 | 06.12 | 2003 | CHTR | 1 | Jackson's Trout Farm | NAD 27 | 12 | 376218 | 4773807 |
| 15 | 06.12 | 2003 | CHTR | 1 | Jackson's Trout Farm | NAD 27 | 12 | 376038 | 4773451 |
| 16 | 06.16 | 2003 | CHTR | 1 | McTucker Ponds | NAD 27 | 12 | 365817 | 4766042 |
| 17 | 06.16 | 2003 | CHTR | 1 | Snake River | NAD 27 | 12 | 365090 | 4765156 |
| 18 | 06.18 | 2003 | JEDO | 1 | McTucker Springs | WGS 83 | 12 | 374295 | 4771122 |
| 19 | 06.19 | 2003 | JEDO | 1 | McTucker Springs | WGS 83 | 12 | 365971 | 4765749 |
| 20 | 06.20 | 2003 | CHTR | 1 | McTucker Springs | NAD 27 | 12 | 365388 | 4765834 |
| 21 | 06.24 | 2003 | JEDO | 1 | Upstream from Twin Bridges | WGS 83 | 12 | 439333 | 4834882 |
| 22 | 06.25 | 2003 | LEGA | 1 | Big Wood River/ Hwy 20 | WGS 83 | 11 | 715501 | 4800677 |
| 23 | 06.26 | 2003 | LUHA | 1 | N of Salmon | WGS 83 | 12 | 272614 | 5011314 |
| 24 | 07.02 | 2003 | JOCO | 1 | South Fork of Snake River | WGS 83 | 12 | 434360 | 4839340 |
| 25 | 07.02 | 2003 | JEDO | 1 | South Fork of Snake River | WGS 83 | 12 | 433360 | 4840112 |
| 26 | 07.05 | 2003 | TIRE | 2 | ca. 0.5 km SW Stanton Crossing | WGS 83 | 11 | 717013 | 4800427 |
| 27 | 07.10 | 2003 | JEDO | 1 | South Fork of Snake River | WGS 83 | 12 | 430236 | 4841790 |
| 28 | 07.10 | 2003 | JOCO | 1 | South Fork Of Snake River | WGS 83 | 12 | 431099 | 4840595 |
| 29 | 07.10 | 2003 | JOCO | 1 | South Fork of Snake River | WGS 83 | 12 | 431352 | 4840361 |
| 30 | 07.11 | 2003 | JOCO | 1 | South Fork of Snake River | WGS 83 | 12 | 438690 | 4835604 |
| 31 | 07.11 | 2003 | CHHI | 1 | Twin Bridges | WGS 83 | 12 | 438594 | 4835832 |
| 32 | 07.19 | 2003 | TIRE | 1 | ca. 1 km SW Stanton Crossing | WGS 83 | 11 | 716578 | 4800470 |



Table 2a. 2003 Yellow-billed Cuckoo records, Continued

^A Observer Codes

BOLU Bob Lugar
CHHI Chad Hinckley
CHTR Chuck Trost
DACL Daren Clark
FRRE Frank Renn
GRRJ Greg Rice
JOCO Jo Cobb
JEDO Jeremy Dodds
JERI Jenny Ricks
JOTI Joel Tinsley
LEGA Lee Garwood
LUHA Lucinda Haggas
TIRE Tim Reynolds



Table 2b. Notes and Sources for 2003 Yellow-billed Cuckoo sightings

| Record | Notes | Source |
|--------|--|-----------------------------|
| 1 | East of the Old Refuge House | IBLE |
| 2 | Where Snake River meets American Falls | Charles Trost E-mail |
| 3 | Upstream of Stinking Springs about a mile | J. Ricks field notes |
| 4 | Flew into Cottonwoods from Siberian Pea Plant | D. Clark E-mail |
| 5 | Upstream of Twin Bridges, One flew over, didn't respond to call | J. Ricks |
| 6 | About half a mile down from Railroad Crossing | Phone Message; E-mail |
| 7 | About half a mile down from Railroad Crossing | Phone Message; E-mail |
| 8 | About half a mile down from Railroad Crossing | Phone Message; E-mail |
| 9 | Window kill ca. 2 mi N Tilden Bridge | E-mail |
| 10 | Found on Redstart Lane near creek | IBLE |
| 11 | One flew directly overheard; heard two others | Saw and heard It |
| 12 | Around the Shelterbelt | IBLE |
| 13 | "coo" call spontaneously | Trost Journal Entry; E-mail |
| 14 | ~ 1 mile down from Tilden Bridge, NW Side of Snake R.; responded to tape with "coop" and "kip-kip-kip" | Trost Journal Entry; E-mail |
| 15 | 200 yards from previous sighting. Responds to tape with "coop" and "kip-kip-kip" above head | Trost Journal Entry; E-mail |
| 16 | Corner of NE pond edge along road toward springs; "kit-kit-kit" calls in response to "koop-koop" calls | Trost Journal Entry; E-mail |
| 17 | Snake R. W of McTucker ponds, ~ ¼ mile upstream from boat ramp, "kit-kit-kit" calls in response to "koop-koop" calls | Trost Journal Entry; E-mail |
| 18 | Flew in was silent until tape finished | Dodds Journal Entry |
| 19 | Called before tape was played | Dodds Journal Entry |
| 20 | McTucker Springs, 100 m south of the SW pond along the spring | Trost Journal Entry; E-mail |
| 21 | Flew in unobserved about 10 feet above ground in thin tree; Called repeatedly for about 3 minutes, then flew | Dodds Journal Entry |
| 22 | Near Stanton Crossing at Gaging Station | R. Garwood E-mail |
| 23 | 0700 One bird calling @ 1812 Dogwood Ln., Salmon. T22N R22E SE ¼ SE ¼ Sec. 19 | Rare Animal Obs Report |
| 24 | Flew in close to upper canopy after entire tape played. It called after about 30 seconds | Cobb Journal Entry |
| 25 | After 3rd tape call, faint call in distance heard; after 5th call on tape, faint call was heard again, no sighting | Dodds Journal Entry |
| 26 | One bird flew in to tape and called softly x 4. A 2nd distant bird also called. | Reynolds data sheet |
| 27 | No visual, heard to right | Dodds Journal Entry |
| 28 | Flew in during tape, called after tape once. Flew into upper canopy | Cobb Journal Entry |
| 29 | Responded to Other side of tape, called during first big pause, then didn't call again | Cobb Journal Entry |
| 30 | Only heard the call; Called after third tape call, didn't call again | Cobb Journal Entry |
| 31 | Seen & heard | Hinckley data sheet |
| 32 | Audio response to tape | Reynolds data sheet |



Table 3a. 2004 Yellow-billed Cuckoo records

| Record | Date | Year | Observer ^A | # Obs | Location | UTM | | | |
|--------|-------|------|-----------------------|------------------|--|--------|------|---------|----------|
| | | | | | | Datum | Zone | Easting | Northing |
| 1 | 06.05 | 2004 | DACL, CLWE | 1 | S. Fk Snake R., RR ^B Bridge below Heise | NAD 27 | 12 | 440000 | 4834806 |
| 2 | 06.09 | 2004 | JOWE | 1 | Vista Drive, Coeur d' Alene | NAD 27 | 11 | 513712 | 5283650 |
| 3 | 06.24 | 2004 | CHTR | 1 | Jackson's Trout Farm, Snake R. | NAD 27 | 12 | 376081 | 4773391 |
| 4 | 06.26 | 2004 | CHHI, DACL | 2 | S. Fk Snake R., RR Bridge Below Heise | NAD 27 | 12 | 440484 | 4834771 |
| 5 | 06.26 | 2004 | CHHI, DACL | 1 | S. Fk Snake R., RR Bridge Below Heise | NAD 27 | 12 | 440196 | 4834639 |
| 6 | 06.26 | 2004 | CHHI, DACL | SAA ^C | S. Fk Snake R., RR Bridge Below Heise | NAD 27 | 12 | 440195 | 4834623 |
| 7 | 06.29 | 2004 | TRPA | 1 | S. Fk Snake R. near Byington | NAD 27 | 12 | 444964 | 4830651 |
| 8 | 07.02 | 2004 | CACO | 1 | Stanton Crossing, Big Wood River | WGS 83 | 11 | 716948 | 4800449 |
| 9 | 07.02 | 2004 | CACO | 1 | Stanton Crossing, Big Wood River | WGS 83 | 11 | 716842 | 4800305 |
| 10 | 07.02 | 2004 | CACO | 1 | Stanton Crossing, Big Wood River | WGS 83 | 11 | 715594 | 4800637 |
| 11 | 07.12 | 2004 | CHHI | 4 | Deer Parks WMU | NAD 27 | 12 | 416260 | 4847763 |
| 12 | 07.12 | 2004 | TRPA | 2 | Deer Parks WMU | NAD 27 | 12 | 418241 | 4846704 |
| 13 | 07.12 | 2004 | TRPA | 3 | Deer Parks WMU | NAD 27 | 12 | 416260 | 4847763 |
| 14 | 07.12 | 2004 | TRPA | SAA | Deer Parks WMU | NAD 27 | 12 | 416468 | 4847863 |
| 15 | 07.13 | 2004 | CHHI | 2 | S. Fk Snake R. below RR Bridge | NAD 27 | 12 | 439507 | 4835143 |
| 16 | 07.13 | 2004 | CHHI | 1 | S. Fk Snake R. above Twin Bridges | NAD 27 | 12 | 438146 | 4835813 |
| 17 | 07.13 | 2004 | LOHA | 1 | S. Fk Snake R. below Byington | NAD27 | 12 | 438970 | 4834994 |
| 18 | 07.13 | 2004 | LOHA | SAA | S. Fk Snake R. below Byington | NAD27 | 12 | 439868 | 4835026 |
| 19 | 07.13 | 2004 | TRPA | 2 | S. Fk Snake R. Twin Bridges area | NAD 27 | 12 | 439242 | 4835638 |
| 20 | 07.14 | 2004 | BOLU | 1 | Labelle Area | NAD 27 | 12 | 429821 | 4838453 |
| 21 | 07.23 | 2004 | ADSS | 1 | S. Fk Snake R. | NAD 27 | 12 | 435517 | 4838011 |
| 22 | 07.30 | 2004 | TRPA | 1 | S. Fk Snake R. below Twin Bridges | NAD 27 | 12 | 437948 | 4835882 |
| 23 | 07.30 | 2004 | DACL | 1 | Camas NWR, HQ area | NAD 27 | 12 | 398648 | 4868648 |

^A Observer Codes

| | | | |
|------|----------------|------|--------------|
| ASSA | Adam StSaviour | CLWE | Cliff Weiss |
| BOLU | Bob Lugar | DACL | Darren Clark |
| CACO | Cam Collins | JOWE | John Weber |
| CHHI | Chad Hinckley | LOHA | Lori Hanson |
| | | TRPA | Troy Parken |

^B RR = Railroad

^C SAA = Same as above



Table 3b. Notes and Sources for 2004 Yellow-billed Cuckoo sightings

| Record | Notes | Source |
|--------|---|--|
| 1 | Single bird flew into taped call | D. Clark to T. Reynolds, E-mail |
| 2 | Single bird foraging in backyard | S. Sturts to T. Reynolds 6.18.04, E-mail |
| 3 | Single bird responded flew into taped call | C. Trost to T. Reynolds 6.24.04, E-mail |
| 4 | 07:45 Pair YBCU observed mating. Cottonwood/Dogwood habitat | 2004 Field Data Sheet |
| 5 | 08:10 Solitary bird seen and heard ("kowlp" call). Cottonwood overstory; Russian olive & Dogwood understory | 2004 Field Data Sheet |
| 6 | 08:36 Followed calling bird to this location; no nest found. Cottonwood/Dogwood | 2004 Field Data Sheet |
| 7 | 06:10 Heard only; responded to tape. | 2004 Field Data Sheet |
| 8 | 05:52 Flew in-response to tape; called twice; perched in tree 1.5 hrs & disappeared. Cottonwood/Willow | 2004 Field Data Sheet |
| 9 | 08:20 Flew into tape; made two knocker calls; possibly same bird as 0552 sighting | 2004 Field Data Sheet |
| 10 | 09:38 Vocal response (knocking call) to tape from ca.100 m. Would not come in | 2004 Field Data Sheet |
| 11 | 09:00 One YBCU observed & 3 others heard. Thick willow with scattered cottonwood overstory | 2004 Field Data Sheet |
| 12 | 06:55 One YBCU observed, at least one other heard. Thick willows; no overstory | 2004 Field Data Sheet |
| 13 | 08:40 At least three YBCU calling; none observed. Thick willows; no overstory | 2004 Field Data Sheet |
| 14 | 09:30 3 YBCU calling. Likely same as above | 2004 Field Data Sheet |
| 15 | 08:30 Pair of YBCU heard & observed; unable to locate nest. Cottonwood/dogwood habitat | 2004 Field Data Sheet |
| 16 | 09:15 Heard one call only | 2004 Field Data Sheet |
| 17 | 07:45 Heard only; responded to "caw" Call. Cottonwood/chokecherry habitat | 2004 Field Data Sheet |
| 18 | 08:00 Same YBCU as above; observed and heard; infrequently responding to tape | 2004 Field Data Sheet |
| 19 | 08:32 At least two birds observed and heard; thick undergrowth | 2004 Field Data Sheet |
| 20 | Late afternoon; heard only | Telecon – B. Lugar to T. Reynolds |
| 21 | 09:00 Vocal response to tape; could not see or get additional responses. Cottonwood/chokecherry habitat | 2004 Field Data Sheet |
| 22 | 07:52 Vocal response to tape from "far away" | 2004 Field Data Sheet |
| 23 | Single bird calling from tree by HQ building | D. Clark to T. Reynolds 7.30.04, E-mail |



Table 4a. 2005 Yellow-billed Cuckoo records

| Record | Date | Year | Observer ^A | No. Obs | Location | UTM | | Easting | Northing |
|--------|-----------|------|-----------------------|----------|---------------------------|--------|------|---------|----------|
| | | | | | | Datum | Zone | | |
| 1 | 5/25/2005 | 2005 | STBO | 1 | Minidoka NWR | NAD 27 | 12 | 299957 | 4727962 |
| 2 | 5/27/2005 | 2005 | CHHI | 1 (a) | Twin Bridges | NAD 27 | 12 | 438653 | 4836177 |
| 3 | 5/27/2005 | 2005 | CHHI | SAA | Twin Bridges | NAD 27 | 12 | 438769 | 4836177 |
| 4 | 5/27/2005 | 2005 | CHHI | SAA | Twin Bridges | NAD 27 | 12 | 438803 | 4836167 |
| 5 | 5/27/2005 | 2005 | TIRE | 1 (a) | Twin Bridges | NAD 27 | 12 | 439100 | 4835538 |
| 6 | 5/27/2005 | 2005 | TIRE | SAA? | Twin Bridges | NAD 27 | 12 | 439279 | 4835400 |
| 7 | 5/27/2005 | 2005 | TIRE | SAA | Twin Bridges | NAD 27 | 12 | 438259 | 4835459 |
| 8 | 5/31/2005 | 2005 | CHHI | 1 (a) | Butler Island RR crossing | NAD 27 | 12 | 440488 | 4834823 |
| 9 | 6/14/2005 | 2005 | CHHI | 2 | Twin Bridges | NAD 27 | 12 | 438576 | 4835830 |
| 10 | 6/14/2005 | 2005 | CHHI | 2 | Twin Bridges | NAD 27 | 12 | 438647 | 4835865 |
| 11 | 6/14/2005 | 2005 | CHHI | 1 | Twin Bridges | NAD 27 | 12 | 438796 | 4835867 |
| 12 | 6/14/2005 | 2005 | CHHI | 2 | Twin Bridges | NAD 27 | 12 | 438889 | 4835875 |
| 13 | 6/15/2005 | 2005 | TIRE | 1 | Butler Island RR crossing | NAD 27 | 12 | 440037 | 4834924 |
| 14 | 6/15/2005 | 2005 | TIRE | 1 | Butler Island RR crossing | NAD 27 | 12 | 439858 | 4834971 |
| 15 | 6/16/2005 | 2005 | CRFO | 1 | Camas NWF | NAD 27 | 12 | 441827 | 4863633 |
| 16 | 6/16/2005 | 2005 | CHHI | 1 | Twin Bridges | NAD 27 | 12 | 438876 | 4836019 |
| 17 | 6/16/2005 | 2005 | DACL | 1 (a) | Twin Bridges | NAD 27 | 12 | | |
| 18 | 6/16/2005 | 2005 | CACO | 1 | Twin Bridges | NAD 27 | 12 | 439486 | 4835205 |
| 19 | 6/22/2005 | 2005 | TIRE | 1 (a) | Tilden Bridge Upstream | NAD27 | 12 | 381429 | 4778908 |
| 20 | 6/22/2005 | 2005 | TIRE | SAA | Tilden Bridge Upstream | NAD 27 | 12 | 381804 | 4779544 |
| 21 | 6/22/2005 | 2005 | CACO | 1 | Tilden Bridge Upstream | NAD27 | 12 | 381438 | 4779138 |
| 22 | 6/23/2005 | 2005 | CH, DS | 2 | McTucker Island | NAD27 | 12 | 366569 | 4764536 |
| 23 | 6/23/2005 | 2005 | CH, DS | 1 | McTucker Island | NAD27 | 12 | 366432 | 4764667 |
| 24 | 6/23/2005 | 2005 | CH, DS | SAA (a) | McTucker Island | NAD27 | 12 | 366642 | 4764649 |
| 25 | 6/23/2005 | 2005 | CH, DS | 1, 1 (a) | McTucker Island | NAD27 | 12 | 366734 | 4764747 |
| 26 | 6/23/2005 | 2005 | CACO | 2 | McTucker Island | NAD27 | 12 | 366756 | 4764422 |
| 27 | 6/23/2005 | 2005 | CACO | SAA | McTucker Island | NAD27 | 12 | 366988 | 4764696 |
| 28 | 6/29/2005 | 2005 | CACO | 1 (a) | Lorenzo Upstream | NAD27 | 12 | 434729 | 4839221 |
| 29 | 6/29/2005 | 2005 | CACO | SAA | Lorenzo Upstream | NAD27 | 12 | 434681 | 4839238 |
| 30 | 6/29/2005 | 2005 | CACO | 1 (a) | Lorenzo Upstream | NAD27 | 12 | 436633 | 4837049 |
| 31 | 6/29/2005 | 2005 | CACO | SAA | Lorenzo Upstream | NAD27 | 12 | 436606 | 4836958 |
| 32 | 6/29/2005 | 2005 | CACO | 1 | Lorenzo Upstream | NAD27 | 12 | 436699 | 4837031 |



Table 4a. 2005 Yellow-billed Cuckoo records Continued

| Record | Date | Year | Observer ^A | No. Obs | Location | UTM | | | |
|--------|-----------|------|-----------------------|---------|-------------------------------|--------|------|---------|----------|
| | | | | | | Datum | Zone | Easting | Northing |
| 33 | 7/7/2005 | 2005 | TIRE | 1 (a) | Upstream from Menan boat ramp | NAD 27 | 12 | 424077 | 4845561 |
| 34 | 7/14/2005 | 2005 | CACO | 2 | Butler Island RR crossing | NAD 27 | 12 | 440122 | 4834939 |
| 35 | 7/14/2005 | 2005 | TIRE | 1 | Butler Island RR crossing | NAD 27 | 12 | 439990 | 4835152 |
| 36 | 7/15/2005 | 2005 | JOLO | 1 | Butler Island RR crossing | NAD 27 | 12 | 439937 | 4834858 |
| 37 | 7/15/2005 | 2005 | CACO | 1 | Butler Island RR crossing | NAD 27 | 12 | 439969 | 4834995 |

| Observer codes | | No. Obs. Codes | |
|----------------|--------------------------------|----------------|------------------------------|
| TIRE | Tim Reynolds | (a) | Audio observation only |
| CACO | Cam Collins | SAA | Likely same as bird as above |
| JOLO | Joe Lowe | | |
| CRFO | Craig Fosdick | | |
| DACL | Darren Clark | | |
| CH, DS | Chad Hinckley & Dave Stricklan | | |
| CHHI | Chad Hinckley | | |
| STBO | Steve Bouffard | | |



Table 4b. Notes and Sources for 2005 Yellow-billed Cuckoo sightings

| Record | Notes | Source |
|--------|---|-----------------------------------|
| 1 | Flushed from sagebrush near riparian area. Probably migrant bird. | S. Bouffard to T. Reynolds, Email |
| 2 | Played tape through heard a Knocker call 100m to the east. | 2005 Field Data Sheet |
| 3 | Heard the same Bird call again, played tape bird moved away. | 2005 Field Data Sheet |
| 4 | Walking towards calling Bird, Cuckoo landed in a cottonwood directly above me stayed for about 3 min. and flew south. | 2005 Field Data Sheet |
| 5 | Did not respond to knocker call 100m south of UTM. | 2005 Field Data Sheet |
| 6 | | 2005 Field Data Sheet |
| 7 | | 2005 Field Data Sheet |
| 8 | Heard a knocker call 100m to the east, Stopped played tape and got no response. | 2005 Field Data Sheet |
| 9 | 2 cuckoos sighted, one was directly above me, the other 70m to the North in dead cottonwood, one making the Kowlp call the other the coo call. A pair of cuckoos seen together. Possible nest from previous year located nearby. | 2005 Field Data Sheet |
| 10 | They made a variety of calls. | 2005 Field Data Sheet |
| 11 | Cuckoo using coo call and a variety of others in top of cottonwood. | 2005 Field Data Sheet |
| 12 | 2 Cuckoos, one was the same bird as above, the other was making a variety of calls. | 2005 Field Data Sheet |
| 13 | Knocker call 3 times, Kowlp Call once flew west. | 2005 Field Data Sheet |
| 14 | Flew into call, Knocker once, Possibly same bird. | 2005 Field Data Sheet |
| 15 | | C. Fosdick to T. Reynolds, Email |
| 16 | Cuckoo called using knocker call and landed in nearby cottonwood stayed 5 min. and flew west. | 2005 Field Data Sheet |
| 17 | Responded to tape making "kowlp call" downstream from Twin Bridges. | 2005 Field Data Sheet |
| 18 | Single bird Kowlp call. 80m to south flew to the north. | 2005 Field Data Sheet |
| 19 | Possible call same bird as Cam. | 2005 Field Data Sheet |
| 20 | Faint Knocker call. | 2005 Field Data Sheet |
| 21 | Gave knocking call, perched in tree caught caterpillar, flew across river. | 2005 Field Data Sheet |
| 22 | Came into call. A pair of cuckoos. May have moved back and forth between Cam. | 2005 Field Data Sheet |
| 23 | Single bird responded to call, made knocker call. | 2005 Field Data Sheet |
| 24 | Heard a call probably same bird as above. | 2005 Field Data Sheet |
| 25 | Vocalized with out call from tape. Another bird vocalized to the south. Cuckoo came from thick dogwood understory, possible nest sight. | 2005 Field Data Sheet |
| 26 | McTucker Creek, 2 cuckoos responded to knocking calls, 2 copulations carrying sticks into a patch of willows 366731, 4764455. Flew in response to Chad's call. | 2005 Field Data Sheet |
| 27 | Knocking call back in the direction of previous pair probably the same birds. | 2005 Field Data Sheet |



| Table 4b. Continued Notes and Sources for 2005 Yellow-billed Cuckoo sightings | | |
|--|--|-----------------------|
| Record | Notes | Source |
| 28 | Calling 200m to the east. | 2005 Field Data Sheet |
| 29 | Watched bird at this location for 15 min. until it flew east. | 2005 Field Data Sheet |
| 30 | Giving coo calls 175m to the east. | 2005 Field Data Sheet |
| 31 | Got visual on above bird from this point. Calling from top of tall bare cottonwood. Bird is 70m from this location, thick understory. | 2005 Field Data Sheet |
| 32 | Lost bird at this point it flew south, then came back and started calling again. | 2005 Field Data Sheet |
| 33 | Possible coo call? | 2005 Field Data Sheet |
| 34 | Flushed a bird here, another joined & remained very tight in this vicinity, calling occasionally, nest likely close by, juvenile seen. | 2005 Field Data Sheet |
| 35 | Male calling observed for 1 hour, possibly four birds one juvenile. | 2005 Field Data Sheet |
| 36 | | 2005 Field Data Sheet |
| 37 | Bird sitting high up in cottonwood, calling occasionally, left him to return to spot where 4 birds were seen 7/14. | 2005 Field Data Sheet |



| Table 4b. Continued Notes and Sources for 2005 Yellow-billed Cuckoo sightings | | |
|--|--|-----------------------|
| Record | Notes | Source |
| 28 | Calling 200m to the east. | 2005 Field Data Sheet |
| 29 | Watched bird at this location for 15 min. until it flew east. | 2005 Field Data Sheet |
| 30 | Giving coo calls 175m to the east. | 2005 Field Data Sheet |
| 31 | Got visual on above bird from this point. Calling from top of tall bare cottonwood. Bird is 70m from this location, thick understory. | 2005 Field Data Sheet |
| 32 | Lost bird at this point it flew south, then came back and started calling again. | 2005 Field Data Sheet |
| 33 | Possible coo call? | 2005 Field Data Sheet |
| 34 | Flushed a bird here, another joined & remained very tight in this vicinity, calling occasionally, nest likely close by, juvenile seen. | 2005 Field Data Sheet |
| 35 | Male calling observed for 1 hour, possibly four birds one juvenile. | 2005 Field Data Sheet |
| 36 | | 2005 Field Data Sheet |
| 37 | Bird sitting high up in cottonwood, calling occasionally, left him to return to spot where 4 birds were seen 7/14. | 2005 Field Data Sheet |



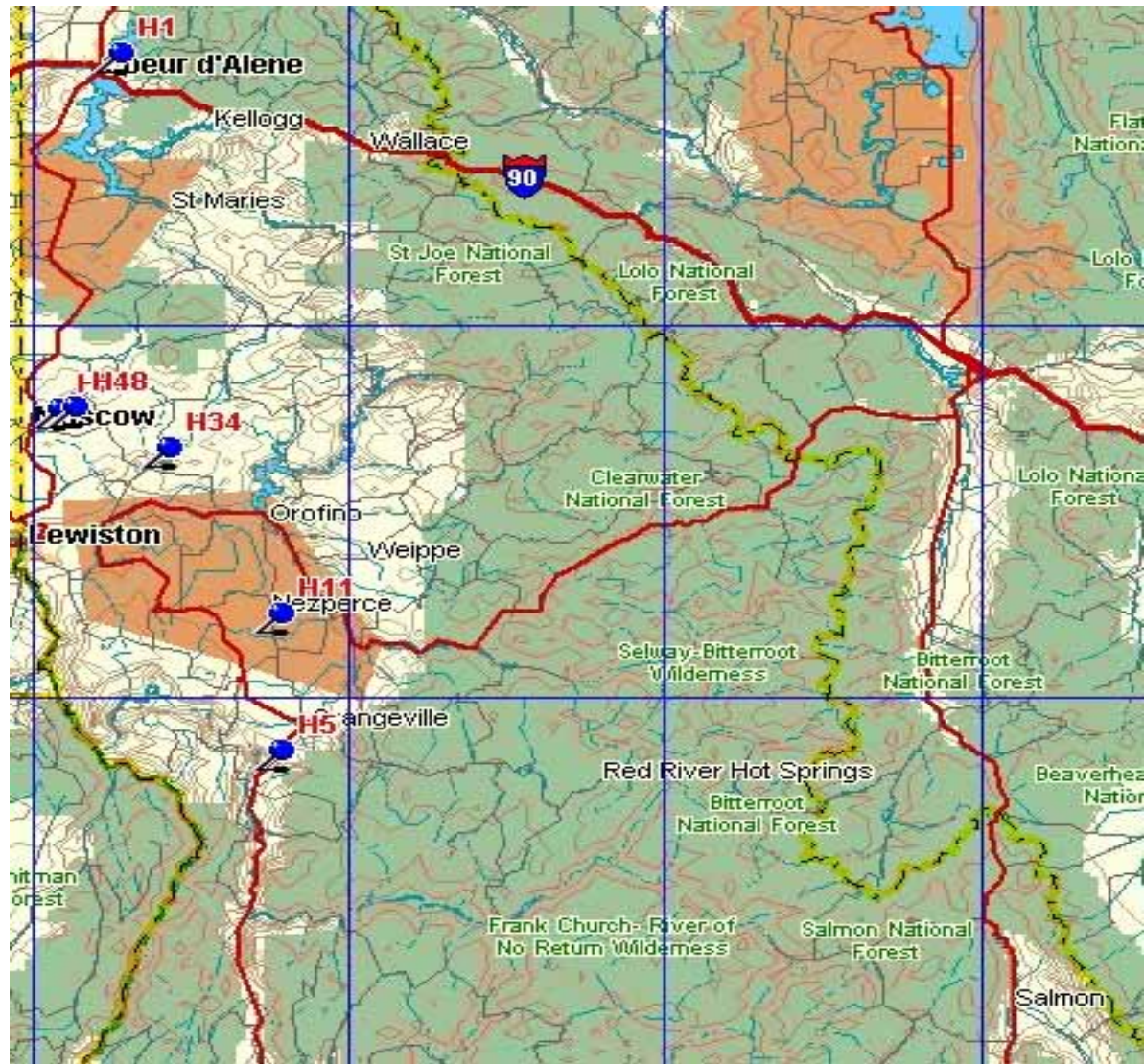


Figure 1a. Estimated locations of historic sightings of Yellow-billed Cuckoo in Northern Idaho.



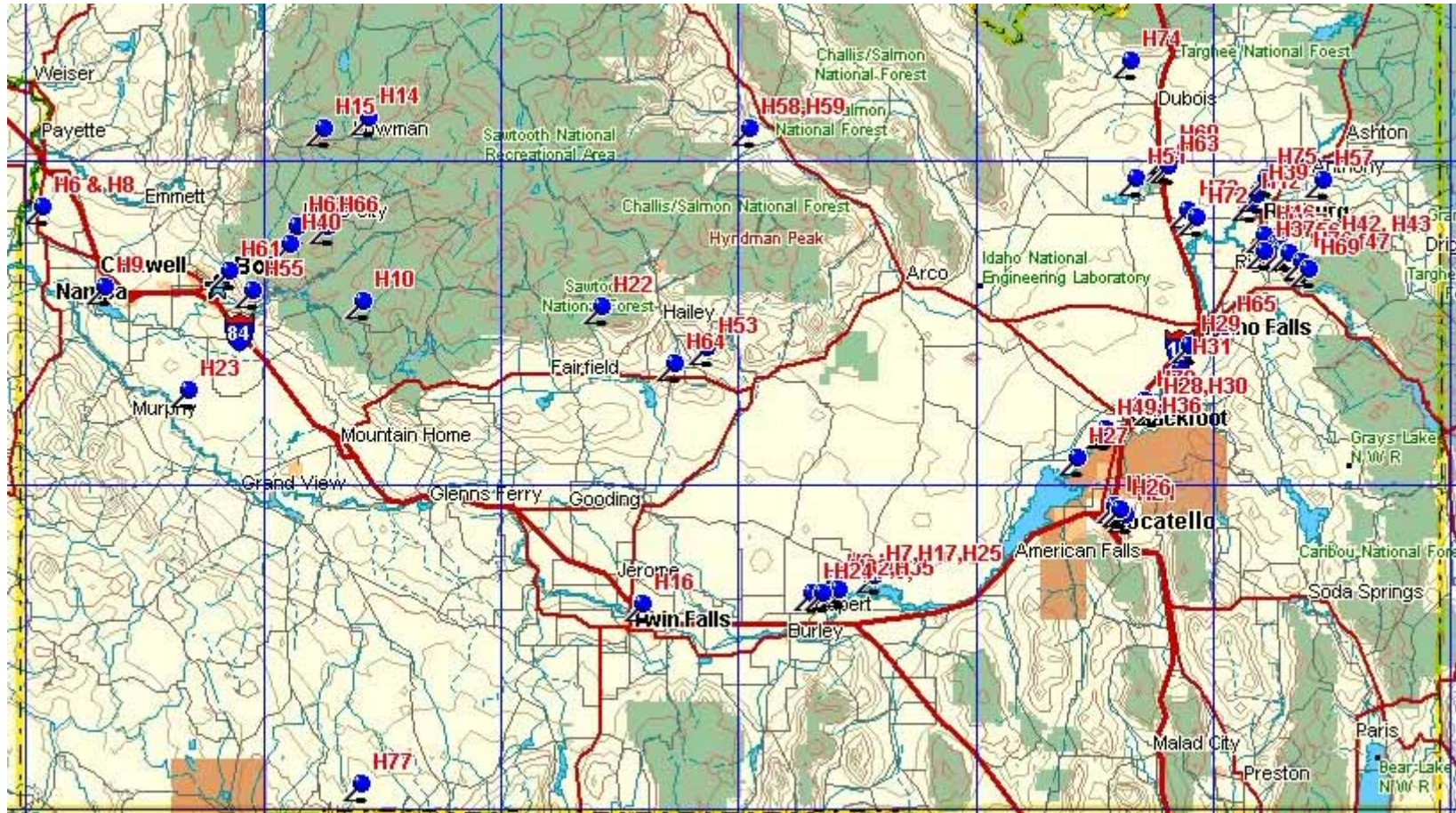


Figure 1b. Estimated locations of historic sightings of Yellow-billed Cuckoo in Southern Idaho.



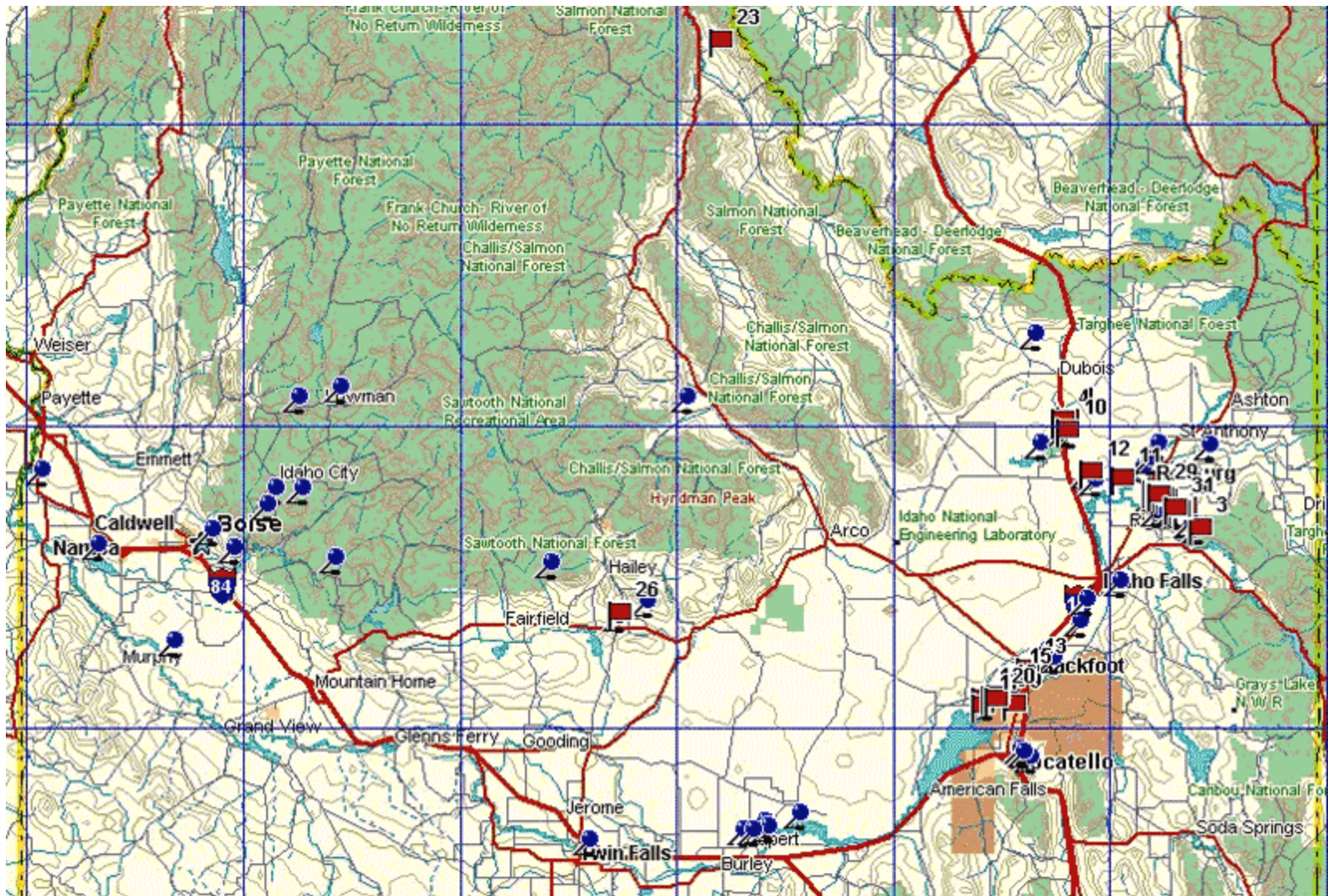


Figure 2. Locations of historic (Blue Pins) and 2003 sightings (Red Flags; numbers correspond to records in Table 2a and 2b) of Yellow-billed Cuckoo in Idaho.



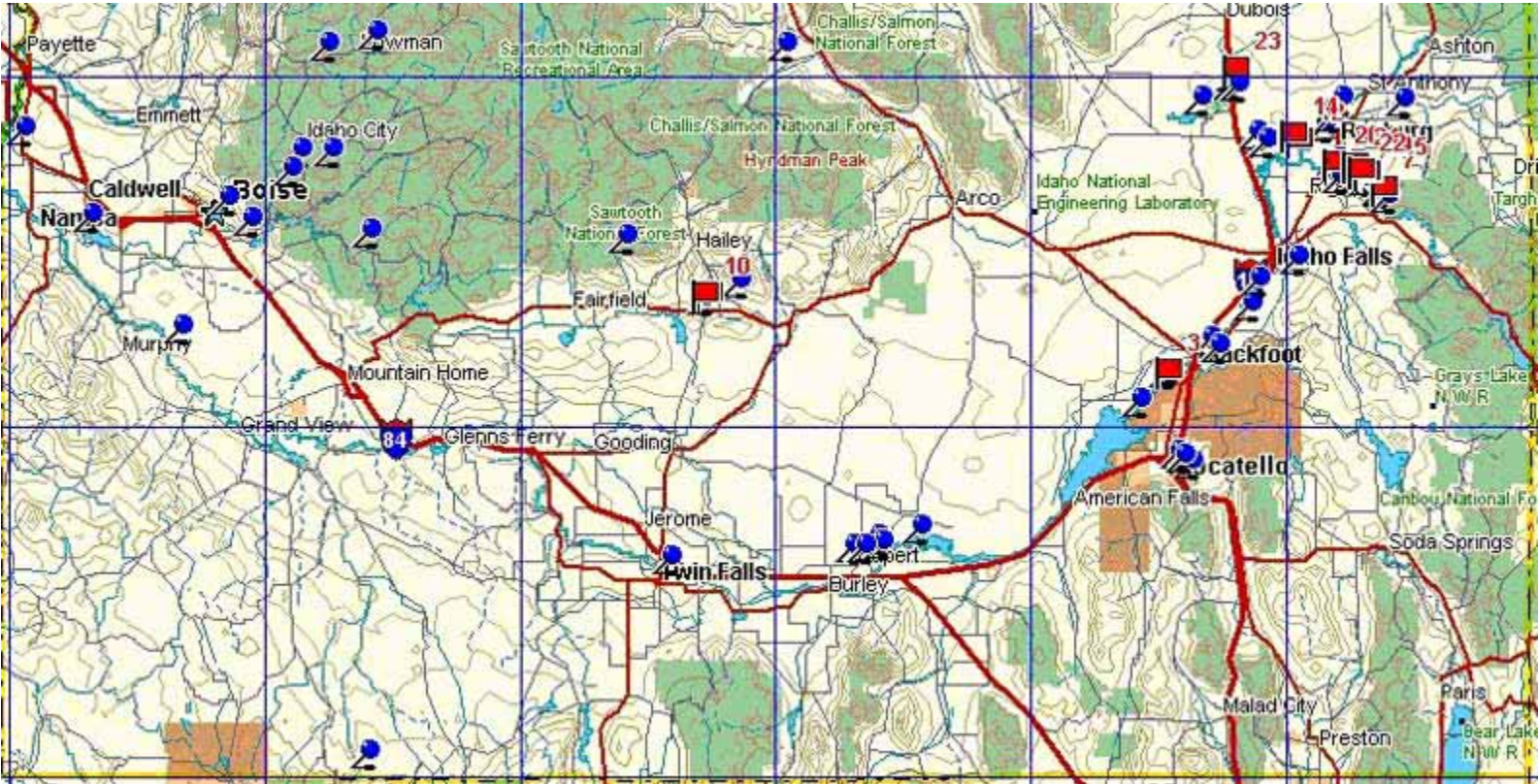


Figure 3. Locations of Historic (Blue Pins) and 2004 (Red Flags; numbers correspond to records in Table 3a and 3b) sightings of Yellow-billed Cuckoo in Idaho. The single sighting in 2004 in Coeur d'Alene in 2004 is not represented.



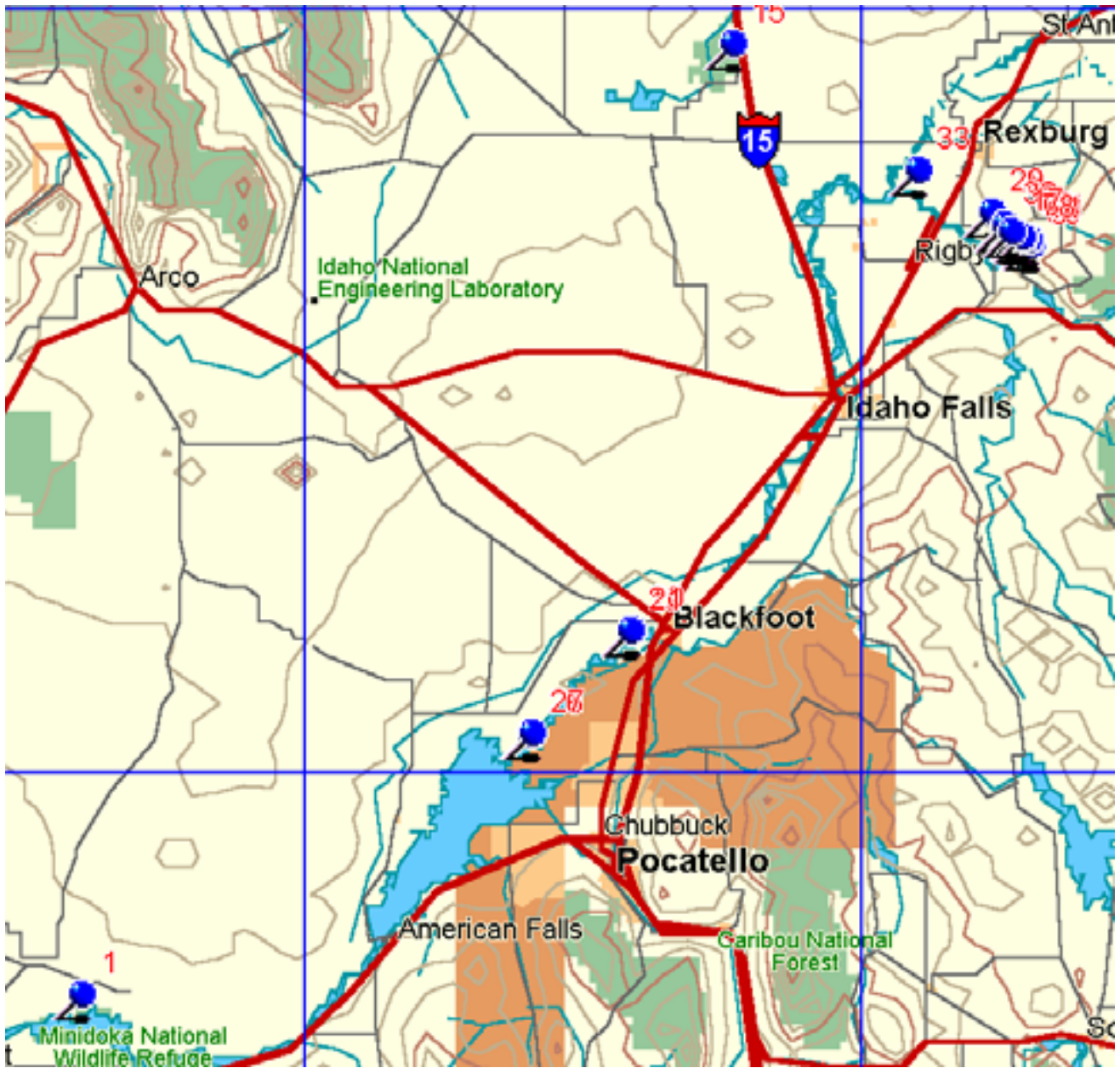


Figure 4. 2005 Yellow-billed Cuckoo sightings (Blue Pins); numbers correspond with records in Tables 4a, 4b.

APPENDIX A

Museums with Ornithological Collections contacted for Yellow-billed Cuckoo records.

Academy of Natural Sciences. Philadelphia, PA
Albertson College of Idaho. Caldwell, ID
American Museum of Natural History, New York, NY
Boise State University. Boise, ID
Brigham Young University – Idaho. Rexburg, ID
Cable Natural History Museum. Cable, WI
California Academy of Sciences Natural History Museum. San Francisco, CA
Carnegie Museum of Natural History. Pittsburgh, PA
Conner Museum, Washington State University, Pullman, WA
Cleveland Museum of Natural History. Cleveland, OH
Cornell University Museum of Vertebrates. Ithaca, NY
Dallas Museum of Natural History. Dallas, TX
Field Museum of Natural History. Chicago, IL
Florida Museum of Natural History. University of Florida, Gainesville, FL
Frank H. McClung Museum. University of Tennessee, Knoxville, TN
Harvard Museum of Natural History. Cambridge, MA
Idaho Museum of Natural History. Idaho State University, Pocatello, ID
Manchester Museum. Manchester, England, UK
Monte L Bean Museum. Brigham Young University. Provo, UT
Museum of Vertebrate Zoology, University of California, Berkeley, CA
National Museum of Natural History. Smithsonian Institution. Washington, DC.
Natural History Museum of Berne, Switzerland, EU
Natural History Museum of Los Angeles County. Los Angeles, CA
Peabody Museum. Yale University. New Haven, CT
Royal Ontario Museum. Canada
San Diego Museum of Natural History. San Diego, CA
Santa Barbara Museum of Natural History. Santa Barbara, CA
Slater Museum of Natural History. University of Puget Sound, Tacoma, WA
Sternberg Museum of Natural History. Fort Hays State University, KS
University of Alaska Museum. Fairbanks, AK
University of Michigan Museum of Zoology. Ann Arbor, MI
University of Bergen, Norway, EU
University of Idaho, Moscow, ID
Western Foundation of Vertebrate Zoology. Caramillo, CA



APPENDIX B

Yellow-Billed Cuckoo Protocol

Contact: Tim Reynolds at 208.745.6913

Objective:

The Yellow-billed Cuckoo (YBCU) is a candidate for Federal listing as a Threatened or Endangered species. It is at the edge of its range in Idaho. Less than 50 records of sightings exist since 1900. Our objective this project is to determine the current presence and distribution of YBCU in Idaho during the breeding season.

Equipment Needed:

- Portable Tape Recorder
- Pre recorded tape of *Yellow-Billed Cuckoo*
- Data sheet, writing instrument
- Map(s) and GPS Unit
- Binoculars

Survey sites:

Surveys are to be conducted in suitable habitat patches consisting of a tall cottonwood overstory with a 2-5 meter tall shrub understory. Suitable habitat patches are generally 5 acres or larger. Distinct habitat patches are separated from the adjacent patch by 300 m, and should be given distinct names/numbers, and surveyed independently. Narrow stringers of riparian vegetation connecting patches of suitable habitat should also be named/numbered and surveyed.

Survey dates, frequency, timing and intensity

Each patch of suitable habitat should be surveyed a minimum of four times at least 12 days apart, starting in late May or early June. Begin surveys at sunrise and stop at noon, or if the wind exceeds 8 mph. Afternoon surveys (18:00 – 20:30) can be effective, particularly just before or after a storm, when winds are light. Habitat patches less than 100 m wide can be surveyed from the edge. Transects through wider patches should be established parallel to and 100 m from the habitat edge.

Procedure:

Surveys use the call-back process. YBCU has four calls: the contact (“kowlp”) call, (“ka-ka-ka-ka-kow-kow-kow-kowlp-kowlp-kowlp”) or “ka-ka-ka-ka-ka-ka-kow-kowlp”); the “knocker” call (resembles series of knocks); the “cow” call (“cow-cow-cow” or “kow-kow-kow”) and the warning call, described as a hollow knock. The contact call has proven most effective in eliciting YBCU call-back. The tapes provided have contact (“kowlp”) calls at one minute intervals: ten calls per side.

- Upon arrival at survey site, record time and location on the data sheet, and wait quietly for 5 minutes.
- Play the tape: five calls one minute apart. Stop the tape. Record results.
- Move 100 meters, wait 5 minutes and repeat.
- Once a bird is detected, the call should not be repeated. Move on to the next patch. DO NOT search for a nest.
- Each time a cuckoo is detected, whether in response to the tape or casual call (not in response to the tape) or an observation, information should be recorded onto the data sheet. If no YBCU are found in a patch, “no detection” should be recorded.



APPENDIX D
(IDAHO FISH AND GAME COPY ONLY)

Idaho Conservation Data Center

Rare Animal Reports

Reports for 2004 Yellow-Billed Cuckoo Observations

