

Waste

Do not send out



EVALUATING BIGHORN HABITAT: A LANDSCAPE APPROACH

Technical Note 395

U.S. DEPARTMENT OF THE INTERIOR
Bureau of Land Management

September 1996

Note: pages IV, VI, are blank
26, 32, 34, 36, 38

EVALUATING BIGHORN HABITAT: A LANDSCAPE APPROACH

Technical Note 395



By William C. Dunn

**Department of Game and Fish
State of New Mexico**

Produced By:

**U.S. Department of the Interior
Bureau of Land Management
National Applied Resource Sciences Center
Information and Communications Group**

September 1996

BLM/RS/ST-96/005+6600

Any mention of trade names, commercial products, or specific company names in this guide does not constitute an official endorsement or recommendation by the Federal Government. Bureau personnel or persons acting on behalf of the Bureau are not liable for any damages (including consequential) that may occur from the use of any information contained in this handbook. Since the technology and procedures are constantly developing and changing, the information and specifications contained in this handbook may change accordingly.

Abstract

This technical note describes a method that incorporates a landscape approach with the use of Geographic Information Systems (GIS) to measure habitat and impacts for Rocky Mountain and desert bighorn sheep and to rank potential transplant sites. A landscape approach, in which habitat is viewed from a large-scale perspective as an assemblage of patches, is used because: (1) bighorn habitat is naturally patchy due to the affinity of bighorn for terrain that is both open and mountainous; (2) fragmentation (i.e., increased patchiness) often is the most severe consequence of human disturbance; and (3) the proximity and distribution of neighboring bighorn ranges may be critical factors in determining genetic and demographic support for small bighorn populations. Potential suitability (the inherent capability to support bighorn sheep) and current suitability (the effect of impacts) is determined for each study area. Habitat components measured in alpine habitat include total habitat, escape terrain, and escape terrain contiguity in both summer and winter ranges. Habitat components measured in low-elevation habitat include total habitat, escape terrain, escape terrain contiguity, and water availability.

Acknowledgements

The New Mexico State Office of the Bureau of Land Management (BLM) furnished training in and use of their GIS; B. T. Milne of the University of New Mexico wrote the program for calculating contiguity indices; J. A. Bailey and M. Weisenberger reviewed the original manuscript; and R. Boyd, K. Rohling, and H. Weiss of BLM's National Applied Resource Sciences Center were instrumental in the final production of this technical note. This study was a contribution of Federal Aid in Wildlife Restoration Project W-127-R. Partial funding also was provided by a BLM Challenge Grant.

Table of Contents

	Page
Abstract.....	iii
Acknowledgements	v
List of Figures.....	ix
List of Tables	ix
Introduction	1
Habitat Requirements	1
Vegetative Cover and Topography.....	1
Seasonal Ranges	2
Population Size	2
Impacts.....	3
Range Conditions	3
Human Disturbance	3
Domestic Sheep	4
Methods	4
Field Surveys	4
GIS Analysis	4
Overview	4
Study Area Boundaries	5
Digital Elevation Model Preparation	5
Potential Suitability	5
Current Suitability	9
Ranking Study Areas	9
Calculating Carrying Capacity	10
Results	10
Alpine Habitat.....	10
Low-Elevation Habitat	16
Discussion.....	19
Literature Cited.....	21

	Page
Appendix A - Glossary of MOSS and MAPS Commands Used in GIS Analysis of Bighorn Habitat	27
Appendix B - Coverage Names Used in GIS Analysis of Bighorn Habitat	29
Appendix C - Flow diagram of the steps for measuring potential alpine bighorn sheep habitat	31
Appendix D - Flow diagram of the steps for measuring current alpine bighorn sheep habitat	33
Appendix E - Flow diagram of the steps for measuring potential low-elevation bighorn sheep habitat	35
Appendix F - Flow diagram of the steps for measuring current low-elevation bighorn sheep habitat	37
Appendix G - BASIC Program for Calculating Contiguity Indices	39

List of Figures

		Page
Figure 1.	The importance of open habitat	2
Figure 2.	Estimating canopy cover from aerial photographs	7
Figure 3.	Using neighborhood analysis to calculate slope from Digital Elevation Models	7
Figure 4.	Measuring escape terrain contiguity	8
Figure 5.	Values of six habitat components used to measure potential and current suitability in alpine Rocky Mountain bighorn sheep study areas in New Mexico	11
Figure 6.	Potential summer and winter habitat for Rocky Mountain bighorn sheep in three alpine study areas in New Mexico	12
Figure 7.	Potential and current summer habitat for Rocky Mountain bighorn sheep in three alpine study areas in New Mexico	15
Figure 8.	Values of four habitat components used to measure potential and current suitability in five historic and eight non-historic desert bighorn sheep ranges in New Mexico	17
Figure 9.	The effects of impacts on three desert bighorn sheep study areas in New Mexico	18

List of Tables

		Page
Table 1.	GIS measurements for analyzing alpine bighorn sheep habitat	6
Table 2.	GIS measurements for analyzing low-elevation bighorn sheep habitat	6
Table 3.	Calculations used to determine potential and current suitability for five alpine Rocky Mountain bighorn sheep study areas in New Mexico	13-14
Table 4.	Carrying capacity calculations for five alpine Rocky Mountain bighorn sheep study areas in New Mexico	16

Introduction

Bighorn sheep were extirpated from much of the West during the late 1800s. Since the 1930s, transplants have been used to return bighorn to their former ranges (Bleich et al. 1990), although some transplanted populations have become extinct or have not grown much larger than the number transplanted (Smith et al. 1988). One reason for unsuccessful transplants may be inadequate habitat assessment, especially the failure to identify and mitigate impacts prior to release of bighorn.

Using Geographic Information Systems (GIS) and a landscape approach in evaluating habitat can increase the potential for successful transplants. Sophisticated analyses of large sets of spatial data are possible with GIS. With a landscape approach, habitat is viewed from a large-scale perspective as an assemblage of patches in which the spatial pattern of patches is an important facet (Forman and Godron 1981). This is a

logical approach to evaluation of bighorn habitat because (1) bighorn habitat is naturally patchy due to the affinity of bighorn for terrain that is both open and mountainous; (2) fragmentation (i.e., increased patchiness) often is the most severe consequence of human disturbance; and (3) the proximity and distribution of neighboring bighorn ranges may be critical factors in determining genetic and demographic support for small bighorn populations (Bailey 1992).

In this technical note, a method originally developed and used in New Mexico is described that incorporates GIS and a landscape approach in evaluation of Rocky Mountain (*Ovis canadensis canadensis*) and desert (*O. c. mexicana*) bighorn habitat. Two objectives are accomplished using this method: (1) habitat and impacts are measured, not simply rated; and (2) study areas are objectively ranked.

Habitat Requirements

Vegetative Cover and Topography

Bighorn sheep rely on keen vision to detect predators and rapid mobility on steep terrain to escape from them. Thus, open, steep terrain is the defining component of bighorn habitat (McQuivey 1978, Risenhoover et al. 1988) (Figure 1). Because of the need for open habitat, bighorn distribution is limited mostly to areas above (i.e., alpine Rocky Mountain bighorn habitat) or below (i.e., low-elevation Rocky Mountain or desert bighorn habitat, hereafter referred to as low-elevation habitat) forests and woodlands.¹ Tilton and Willard (1982) and Holl and Bleich (1983:61) found vegetation with canopy cover $\leq 25-30\%$ open enough to be

regularly used by bighorn. Slopes $\geq 60\%$ generally are considered steep enough to be classified as escape terrain (Hansen 1980, Holl 1982, Armentrout and Brigham 1988, McCarty and Bailey 1994:1). Slopes $< 60\%$ serve as foraging areas and as corridors between patches of escape terrain (Berger 1991, Bleich 1993). Escape terrain is especially important for ewe-lamb groups because of the high vulnerability of lambs to predation (Sandoval 1979:118, Holl and Bleich 1983:61, Gionfriddo and Krausman 1986, Berger 1991, Bleich 1993:57). Based on the affinity of ewe-lamb groups to escape terrain, it is reasonable to assume that the value of escape terrain in providing protection from predators is positively

¹ Some desert bighorn (*O. c. nelsoni*) populations in northern Nevada also occur above timberline.



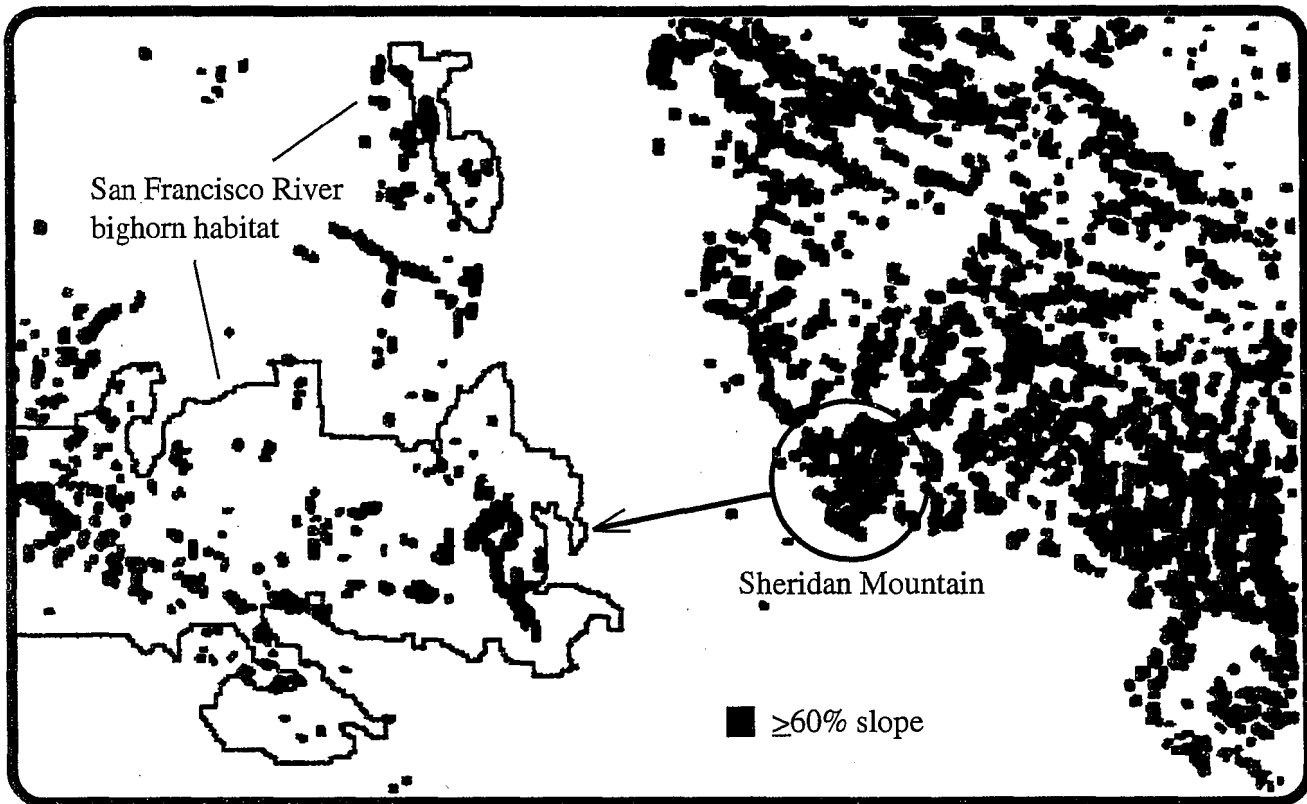


Figure 1. The importance of open habitat. If bighorn only required steep slopes for security, the forested slopes of the Mogollon Mountains, of which Sheridan Mountain is a part, would be excellent bighorn habitat. In 1964, rams from the Turkey Creek population of southwestern New Mexico traveled 30 km (18.5 mi) north to Sheridan Mountain. Eighteen more bighorn subsequently were transplanted to Sheridan Mountain. Within a year, the entire population moved to habitat along the San Francisco River (outlined area) which had less steep terrain, but was covered with open desert grass and shrub vegetation types. Currently, the San Francisco River population contains approximately 100 animals.

related to sizes of escape terrain patches and inversely related to distances between escape terrain patches (Berger 1991, Bleich 1993:87).

Seasonal Ranges

During winter, habitat use by alpine populations is restricted by deep snows. Many alpine populations migrate to low elevation winter ranges (Geist 1971:69, Festa-Bianchet 1986), but in New Mexico, bighorn remain on windswept, snow-free slopes within alpine habitat (Smith and Johnson 1979:40).

Unlike alpine populations, low-elevation bighorn populations generally do not have distinct seasonal ranges (McCarty and Bailey 1994:11).

However, low-elevation populations may restrict their ranges to areas near water during hot, dry weather when water requirements are high. During this period, ewes with lambs generally remain ≤ 3.2 km (2 mi) from water sources that are in open habitat and close to escape terrain (Leslie 1978, Leslie and Douglas 1979:46, Sandoval 1979:192, Bleich 1993:49).

Population Size

The survival of a population is never guaranteed no matter how large it is (Thomas 1990). The minimum size for a population to be considered viable and self-sustaining for more than a few decades generally is about 100, although several



hundred is recommended (Soule 1980, Soule and Simberloff 1986, Berger 1990, Thomas 1990). Populations with fewer than 100 animals are susceptible to extinction from catastrophic events such as disease outbreaks (Thomas 1990) and may not have enough genetic diversity for long-term persistence (Franklin 1980:147). Some bighorn populations smaller than 100 animals have survived for more than 50 years, but most of these (1) were at low levels but had enough habitat to increase to more than 100 bighorn (Krausman et al. 1993, Goodson 1994), (2) had been augmented with additional animals (Goodson 1994), or (3) were part of an interbreeding group of populations known as a metapopulation (Lande and Barrowclough 1987, Wehausen 1996). The potential for interbreeding among neighboring populations is positively related to population size and proximity to neighboring populations (Gilpin 1987). Intermountain movements of 15 km (9 mi) by ewes and 25-50 km (15-30 mi) by rams have been well documented for Rocky Mountain (Festa-Bianchet 1986, Dunn 1993:29) and desert bighorn (Elenowitz 1983, Cochran and Smith 1983, Ough and deVos 1984, Schwartz et al. 1986, Ramey 1993:118). Thus, populations within 25 km (15 mi) of each other would have a high probability of forming a metapopulation unless physical barriers prevented interchange of individuals.

Impacts

Range Conditions

Bighorn are foraging generalists and their diets vary seasonally and throughout their geographic range (Todd 1975, Johnson and Smith 1980, Cooperrider and Hansen 1982, Whitfield and Keller 1984, Miller and Gaud 1989). However, like all ruminants, bighorn do best with highly nutritious forage (Hanley 1982) and therefore can be adversely affected by poor range conditions where the quality, quantity, and diversity of forage are low (Stoddart et al. 1975:267-271, Dodd and Brady 1986).

Human Disturbance

Reaction of bighorn to human disturbance varies greatly and may be affected by the type and frequency of disturbance, season of occurrence, amount of habitat affected, position of the disturbance to the sheep, proximity of the sheep to escape terrain, and degree of habituation (Berger 1978, Wehausen 1980:192, 1983:74, Miller and Smith 1985). Impacts that can disturb sheep include:

- *Mines and Construction Sites.* Noise and vehicle traffic may cause abandonment of habitat (Leslie and Douglas 1980, Campbell and Remington 1981, DeForge and Scott 1982).
- *Recreation Use.* Bighorn may react to hikers or cross-country skiers that approach within 200 m (220 yds), especially if escape terrain is unavailable (Wehausen 1980:194, 1983:75, Holl and Bleich 1983:81, Miller and Smith 1985, Stanger et al. 1986). Harmful interactions, such as bighorn being chased by dogs and physically restrained by recreationists, have been observed in the Pecos Wilderness of northern New Mexico (Hass 1990, 1991). Trails and campsites within bighorn habitat increase the potential for harmful interactions.
- *Housing Developments.* Noise, vehicle traffic, and harassment from dogs and humans may cause bighorn to abandon habitat near housing developments (DeForge and Scott 1982, MacArthur et al. 1982).
- *Roads.* Vehicle traffic on two-lane highways generally does not disturb sheep (MacArthur et al. 1982, Miller and Smith 1985), but significant mortality from vehicles can occur (Cunningham



and deVos 1992). Bighorn movements can be impeded by highway right-of-way fences and guard rails (Witham and Smith 1979). Primitive roads provide access into otherwise undisturbed areas, which may result in habitat abandonment and increased illegal harvest.

- *Fences.* Mortality from entanglement in fences has been documented (Welsh 1971, Elenowitz 1983).
- *Aircraft.* Bighorn are not visibly disturbed by single-engine airplanes flying >100 m (110 yds) above ground (Krausman and Hervert 1983, Miller and Smith 1985) and desert bighorn apparently habituate to repeated jet overflights on military reserva-

tions (Weisenberger et al. 1996). However, helicopters flying <450 m (500 yds) above ewes have been linked to increased heart rates (MacArthur et al. 1982) and decreased foraging efficiency (Stockwell et al. 1991).

Domestic Sheep

Domestic sheep carry diseases such as bronchopneumonia and scabies that can cause significant mortality in bighorn populations (Foreyt and Jessup 1982, Goodson 1982, Jessup 1985, Sandoval 1988). Therefore, the Technical Staff of the Desert Bighorn Council (1990) recommends ≥ 13.5 km (8 mi) separation between bighorn and domestic sheep unless topographic features or physical barriers prevent interaction.

Methods

Field Surveys

Field surveys of each study area were conducted to (1) examine perennial water sources in low-elevation habitats, (2) map range conditions and human impacts, and (3) ground-truth GIS data. Water sources were evaluated for livestock use, persistence (ephemeral or perennial), and distance to escape terrain². Sources that were ephemeral, surrounded by fences higher than 1.1 m (3.6 ft) or lower than 0.5 m (1.5 ft) (Helvie 1971), or in dense vegetation were not included in the analysis. Poor range conditions were visually identified by soil erosion, recent gully formation, scarce ground litter, grasses with few seedheads, browse plants with abundant dead dance of *Aristida spp.*, *Gutierrezia spp.*, or *Opun-*

tia spp. (Oosting, 1956:396-97, Stoddart et al., 1975:267-271). Human impacts evaluated included mines, roads, hiking trails, recreation sites, fences, and military impacts (i.e., areas affected by bombing, shelling, or ground operations).

GIS Analysis

Overview

The BLM's automated digitizing system (ADS), vector-based Map Overlay and Statistical System (MOSS), and raster-based Map Analysis Program System (MAPS) were used to create and analyze spatial databases (hereafter referred to as coverages) with a variety of operations such as buffering of geographic features, measurement

² Local residents and land management agency personnel provided important information in determining livestock use and persistence of water.



of slope, and merging or intersecting several coverages. Proficiency with eight GIS commands was needed to accomplish this method (Appendices A and B). Biologists not familiar with GIS should refer to Webster (1988), Keating (1993), or Scott et al. (1993) for introductory information and should consult with GIS specialists for assistance in using the method described in this technical note.

Study areas were categorized as alpine (i.e., above treeline) or low-elevation habitat (i.e., below forested areas). Potential suitability (the inherent capability of an area to support bighorn) and current suitability (the effect of impacts) were measured for each study area (Appendices C, D, E, and F). All habitat was included in the measure of potential suitability, whereas only habitat not affected by poor range conditions or human disturbances was included in the measure of current suitability. Six habitat components were used to evaluate alpine habitat; total habitat, escape terrain, and escape terrain contiguity were measured for both summer and winter ranges (Table 1). Four habitat components were measured to evaluate low-elevation habitat: total habitat, escape terrain, escape terrain contiguity, and water availability (Table 2).

Study Area Boundaries

Only study areas ≥ 15 km² (6 mi²) were analyzed. Study area boundaries were defined as all patches of habitat with $\leq 25\%$ canopy cover and $\geq 20\%$ slope³ that were separated by ≤ 5 km (3 mi) of flat terrain ($\leq 20\%$ slope) or dense vegetation ($> 25\%$ canopy cover). Tree and shrub canopy cover was estimated from 1:24,000 aerial photographs by using a 1.5-4x stereoscope and a canopy cover template (U.S. Forest Service North Cen-

tral Forest and Range Experiment Station, St. Paul, MN) (Figure 2). Areas with $\leq 25\%$ canopy cover were outlined on 7.5' topographic maps and digitized to create a coverage of open vegetation.

Digital Elevation Model Preparation

Digital Elevation Models (DEM) comprised of 100x100 m cells (1:250,000 scale) were used for topographic analysis (U.S. Geological Survey 1987)⁴. The portion of the DEM that encompassed each study area was extracted and converted to Universal Transverse Mercator (UTM) projection. Slope was measured from the DEM with neighborhood analysis (Webster 1988:139) (Figure 3). In this operation, elevation of the central, or target, cell within a 3x3 cell window was compared by GIS to the elevation of and distance to the surrounding cells in the window. The maximum slope measured was assigned by GIS to the target cell and stored in an initial slope coverage that contained percent slope for each cell of the study area.

Potential Suitability

A coverage of slopes $\geq 20\%$ was extracted from the initial slope coverage. The coverage of slopes $\geq 20\%$ was intersected with the coverage of open vegetation to identify total habitat⁵. Cells with slopes $\geq 60\%$ were extracted from the total habitat coverage to create a coverage of escape terrain. A coverage of escape terrain patches was created by combining (clumping) cells of escape terrain that were ≤ 200 m (220 yds) apart. Location (UTM coordinates) of the center of each escape terrain patch was determined using a cursor.

³ Chosen because the base of most desert ranges analyzed occurred where slopes were 20%.

⁴ Higher resolution DEMs are also available for many areas: (1) two arc-second (60x60 m cells) DEMs with vertical accuracy of ± 25 m, and (2) 7.5' DEMs (30x30 m cells) with vertical accuracy of ± 15 m (Keating, Jr. 1993).

⁵ Called suitable habitat in Dunn (1993, 1994).



Table 1. GIS Measurements for Analyzing Alpine Bighorn Sheep Habitat

<p>A. Potential Suitability (All habitat that could be used by bighorn sheep)</p> <ol style="list-style-type: none"><i>Potential Total Habitat (summer)</i>: All patches ≤ 5 km (3 mi) apart that have canopy cover $\leq 25\%$ and slopes $\geq 20\%$.<i>Potential Escape Terrain (summer)</i>: All patches that have canopy cover $\leq 25\%$ and slopes $\geq 60\%$.<i>Potential Escape Terrain Contiguity (summer)</i>: Measure of size and proximity of escape terrain patches.<i>Potential Total Habitat (winter)</i>: Snow-free patches with canopy cover $\leq 25\%$ and slopes $\geq 60\%$.<i>Potential Escape Terrain (winter)</i>: Snow-free patches with canopy cover $\leq 25\%$ and slopes $\geq 60\%$.<i>Potential Escape Terrain Contiguity (winter)</i>: Measure of size and proximity of snow-free patches of escape terrain.	<p>B. Current Suitability (Habitat not affected by impacts)</p> <ol style="list-style-type: none"><i>Current Total Habitat (summer)</i>: Potential total Habitat (summer) - impacted areas.<i>Current Escape Terrain (summer)</i>: Potential escape terrain (summer) - impacted areas.<i>Current Escape Terrain Contiguity (summer)</i>: Measure of size and proximity of patches of escape terrain not affected by impacts.<i>Current Winter Habitat</i>: Potential total habitat - impacted areas.<i>Current Winter Escape Terrain</i>: Potential escape terrain - impacted areas.<i>Current Escape Terrain Contiguity</i>: Measure of size and proximity of snow-free patches of escape terrain not affected by impacts.
---	---

Table 2. GIS Measurements for Analyzing Low-Elevation Bighorn Sheep Habitat

<p>A. Potential Suitability (All habitat that could be used by bighorn sheep)</p> <ol style="list-style-type: none"><i>Potential Total Habitat</i>: All patches ≤ 5 km (3 mi) apart with canopy cover $\leq 25\%$ and slopes $\geq 20\%$.<i>Potential Escape Terrain</i>: All patches of total habitat with slopes $\geq 60\%$.<i>Potential Escape Terrain Contiguity</i>: Measure of size and proximity of escape terrain patches.<i>Potential Water Availability</i>: Potential Total Habitat ≤ 3.2 km (2 mi) from perennial water sources that are ≤ 200 m (220 yds) from escape terrain.	<p>B. Current Suitability (Habitat not affected by impacts)</p> <ol style="list-style-type: none"><i>Current Total Habitat</i>: Potential Total Habitat - impacted areas.<i>Current Escape Terrain</i>: Potential Escape Terrain - impacted areas.<i>Current Escape Terrain Contiguity</i>: Measure of size and proximity of escape terrain patches not affected by human impacts.<i>Current Water Availability</i>: Current total habitat < 3.2 km (2 mi) from perennial water sources that are < 200 m (220 yds) from escape terrain and not within impacted areas.
---	---



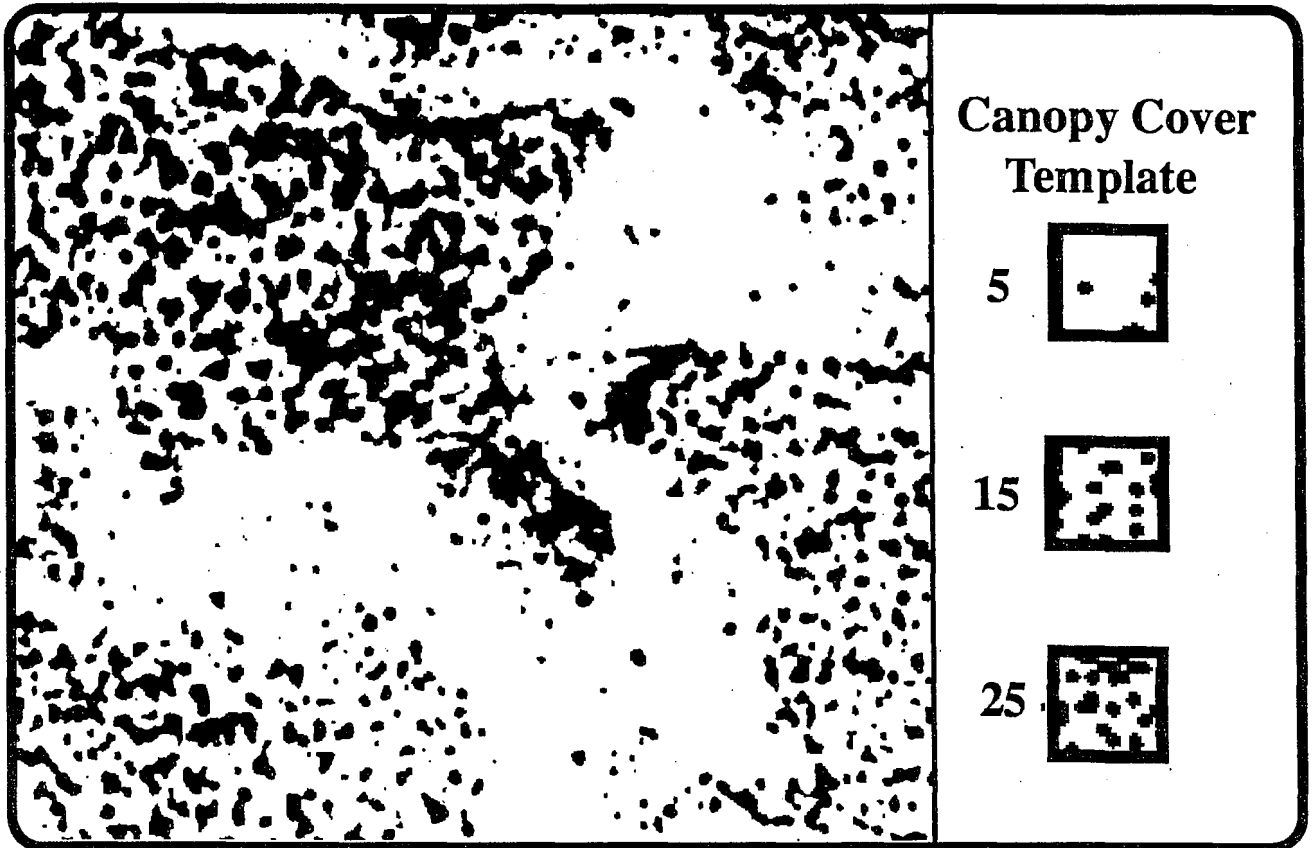


Figure 2. Estimating canopy cover from aerial photographs. Canopy cover was estimated from 1:24,000 aerial photographs by using a 1.5-4x stereoscope and a canopy cover template (U.S. Forest Service North Central Forest and Range Experiment Station, St. Paul, MN). Areas with $\leq 25\%$ canopy cover were outlined on 7.5' topographic maps and digitized to create a coverage of open vegetation. The canopy of a pinyon-juniper woodland and the canopy cover template are shown above.

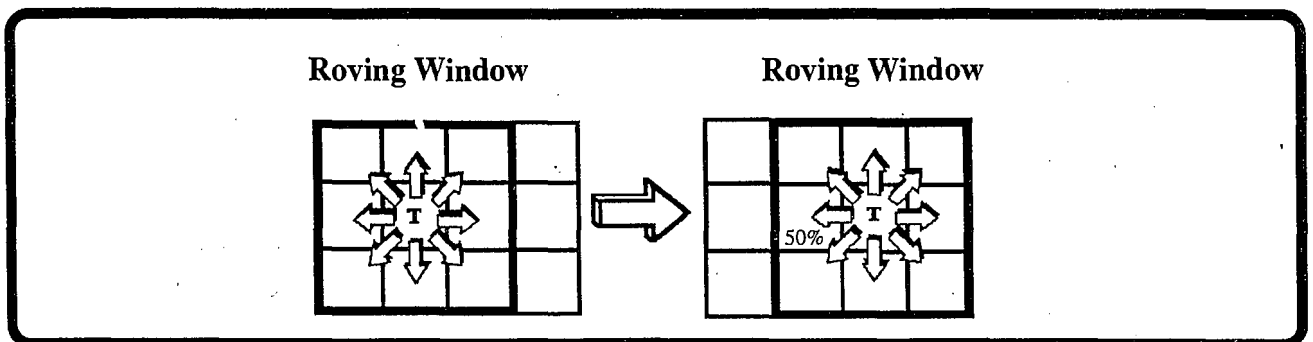


Figure 3. Using neighborhood analysis to calculate slope from Digital Elevation Models (DEM). Within a 3x3 cell window, elevation of the central (or target) cell was compared by GIS to the elevation of and distance to surrounding cells. The maximum slope determined in the window was assigned by GIS to the target cell (50%) and stored in an initial slope coverage.

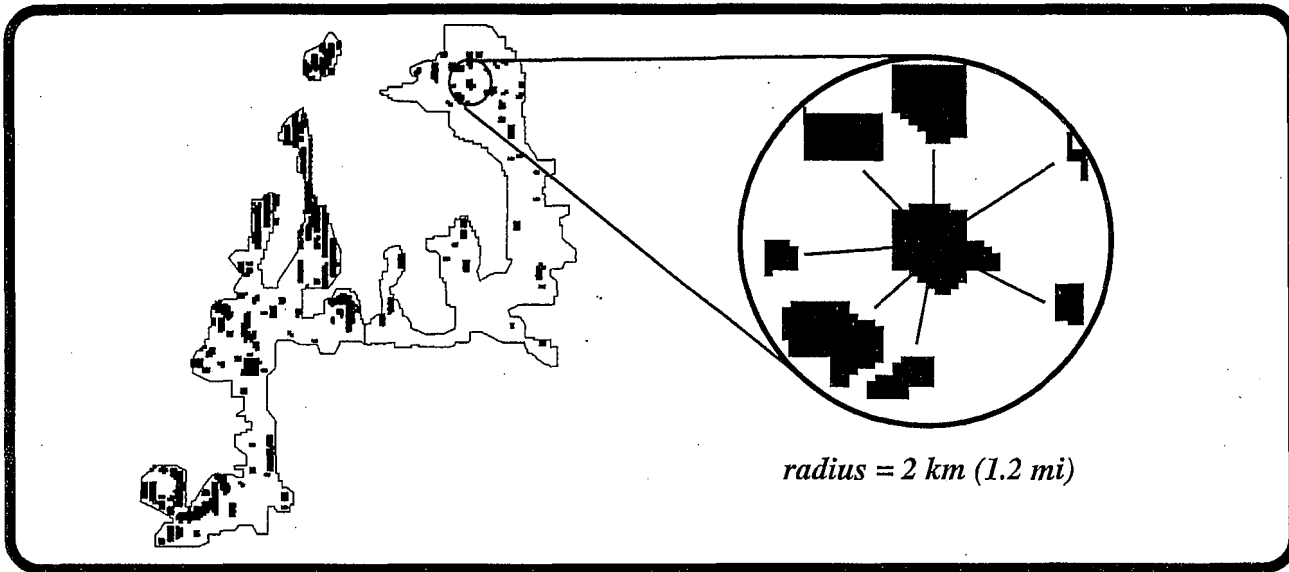


Figure 4. Measuring escape terrain contiguity. Each patch of escape terrain within the study area became a “focal” patch and was measured against each neighboring escape terrain patch that was within 2 km (1.2 mi). For each one-to-one comparison, the areas of the focal and neighboring patch were multiplied and the product was then divided by the distance between the patches squared. The sum of all values calculated in these one-to-one comparisons was the contiguity value for the focal patch. The contiguity index for the study area was the mean of the values calculated for all escape terrain patches within the study area.

Contiguity of escape terrain was measured using a modification of the formula for calculating gravitation attraction between two objects (Zill 1992:357) (Figure 4):

$$CI = \left(\frac{1}{1000n} \right) \sum_{i=1}^n \sum_{j=1}^c \frac{(A_i)(A_j)}{d_{ij}^2}$$

where:

- CI = contiguity index
- n = total number of escape terrain patches within the study area
- c = number of escape terrain patches ≤ 2 km (1.2 mi) of the focal escape terrain patch
- A_i = area (km²) of the focal escape terrain patch
- A_j = area (km²) of the neighboring escape terrain patch
- d_{ij} = distance (km) between the focal and neighboring escape terrain patch

To measure contiguity in a study area, each patch of escape terrain became a “focal” patch and was compared to each neighboring escape terrain patch that was within 2 km (1.2 mi). For these one-to-one comparisons, the areas of the focal and neighboring patch were multiplied and the product was divided by the distance between the patches squared. The sum of all values calculated in the one-to-one comparisons was the contiguity value for the focal patch. The contiguity index for the study area was the mean of the values calculated for all escape terrain patches within the study area. Appendix G contains a computer program for calculating the escape terrain contiguity index of each study area using UTM coordinates and sizes of escape terrain patches.

Winter ranges of alpine study areas in New Mexico were identified from photographs taken during a mid-February, fixed-wing flight that occurred when snowpack was 120% of normal, so winter range estimates were conservative. Snow-

free slopes identified in the photographs were outlined on 7.5' maps and digitized to create a GIS coverage. This coverage was intersected with the coverages of total habitat and escape terrain to identify total habitat and escape terrain available during winter. Escape terrain contiguity was measured from the resulting winter escape terrain coverage.

For low-elevation habitat, water availability was measured as the amount of total habitat ≤ 3.2 km (2 mi) from perennial water sources that were within 200 m (220 yds) of escape terrain⁶. A coverage of perennial water sources was intersected with a coverage of escape terrain patches that had been buffered to 200 m (220 yds) to create a coverage of perennial water sources near escape terrain. A 3.2 km (2 mi) buffer was then created around these water sources and this coverage was intersected with the coverage of total habitat to measure water availability.

Current Suitability

Current suitability was measured with the same components used to measure potential suitability, but only habitat not affected by impacts was used. A coverage of impacts was created that included: (1) range in poor condition; (2) military impacts (i.e., areas where bombing, shelling, or ground operations occurred); (3) 200 m (220 yd) buffers around hiking trails (based on flight distance of bighorn) and improved roads; and (4) 500 m (550 yd) buffers around primitive roads (the probable maximum distance from which bighorn would be shot by poachers), recreation sites, and housing developments⁷. Current total habitat and escape terrain were determined by eliminating impacted areas from potential total habitat and potential escape terrain, respectively. Current escape terrain contiguity was measured from the

coverage of current escape terrain. Current water availability was measured as the amount of current total habitat ≤ 3.2 km (2 mi) from perennial water sources that were ≤ 200 m (220 yd) from escape terrain and not in areas affected by impacts.

Ranking Study Areas

To rank study areas, data were normalized for each habitat component by dividing the component value of the study area by the maximum value of that habitat component found among all study areas. Thus, component values ranged from 0 to 1. At least one range where the bighorn population size was known and at carrying capacity was included in the analysis to serve as a standard of comparison.

For alpine areas, potential (using all habitat) and current suitability (using only unimpacted habitat) scores were calculated with the formula:

$$SS = \frac{\left(\frac{STH_i}{STH_{max}} \right) + \left(\frac{SET_i}{SET_{max}} \right) + \left(\frac{SETC_i}{SETC_{max}} \right) + \left(\frac{WTH_i}{WTH_{max}} \right) + \left(\frac{WET_i}{WET_{max}} \right) + \left(\frac{WETC_i}{WETC_{max}} \right)}{6}$$

where:

- SS = suitability score (potential or current)
- STH = amount (km²) of total habitat during summer
- SET = amount (km²) of escape terrain during summer
- SETC = escape terrain contiguity during summer
- WTH = amount (km²) of total habitat during winter
- WET = amount (km²) of escape terrain during winter
- WETC = escape terrain contiguity during winter
- i = value of the component for the study area

⁶ Occasionally, perennial water sources >200 m (220 yds) from escape terrain were included in measurement of water availability because they were in terrain judged to be rugged enough to be regularly used by ewe-lamb groups.

⁷ Improved roads included paved and gravel roads that were regularly traveled. Primitive roads included unmaintained dirt roads and jeep trails.



max = maximum value of that component for all study areas.

For low-elevation study areas, potential (using all habitat) and current (using only unimpacted habitat) suitability scores were calculated with the formula:

$$SS = \frac{\left(\frac{TH_i}{TH_{max}} \right) + \left(\frac{ET_i}{ET_{max}} \right) + \left(\frac{ETC_i}{ETC_{max}} \right) + \left(\frac{WA_i}{WA_{max}} \right)}{4}$$

where:

- SS = suitability score (potential or current)
- TH = amount (km²) of total habitat
- ET = amount (km²) of escape terrain
- ETC = escape terrain contiguity
- WA = water availability (km²)
- i = value for the study area
- max = maximum value of that component for all study areas.

The rank of each study area was based on the Habitat Suitability Score, the average of its potential and current suitability scores. Study areas

≤15 km (9 mi) from domestic sheep were included in the rankings but were not considered for transplants until the domestic sheep were permanently removed.

Calculating Carrying Capacity

Carrying capacity, the number of animals that a range can support on a sustained basis (Boyd et al. 1986:524), was calculated using the ratio of the Habitat Suitability Score to the Population Size of an occupied range containing a population at carrying capacity:

$$\frac{HSS_o}{CC_o} = \frac{HSS_i}{CC_i}$$

where:

- HSS_o = the Habitat Suitability Score of the occupied range
- CC_o = the carrying capacity (number of animals) of the occupied range
- HSS_i = the Habitat Suitability Score of study area i
- CC_i = the carrying capacity (number of animals) calculated for study area i

Results

Alpine Habitat

In New Mexico, alpine habitat occurs only in small, widely-scattered patches above 3500 m (11,500 ft) elevation. Because of a relatively mild climate, forests grow to the tops of most mountains, so alpine habitat is much more limited than in the more northerly latitudes (Arno and Hammerly 1984:16). Five alpine study areas were evaluated with this methodology.

Most bighorn habitat was found in the Pecos and Wheeler Peak Wilderness Areas, where big-

horn persisted until the late 1800s and where the only alpine populations in New Mexico currently reside. Bighorn were transplanted to the Pecos Wilderness in 1964 and to Wheeler Peak in 1993. The Pecos Wilderness has approximately 320 bighorn; carrying capacity was estimated to be 175-330 (Smith and Johnson 1979:102). Wheeler Peak has 60 bighorn and the population is increasing. These two areas contain 65% of the total habitat and 77% of the escape terrain of the five alpine areas (Figures 5 and 6).



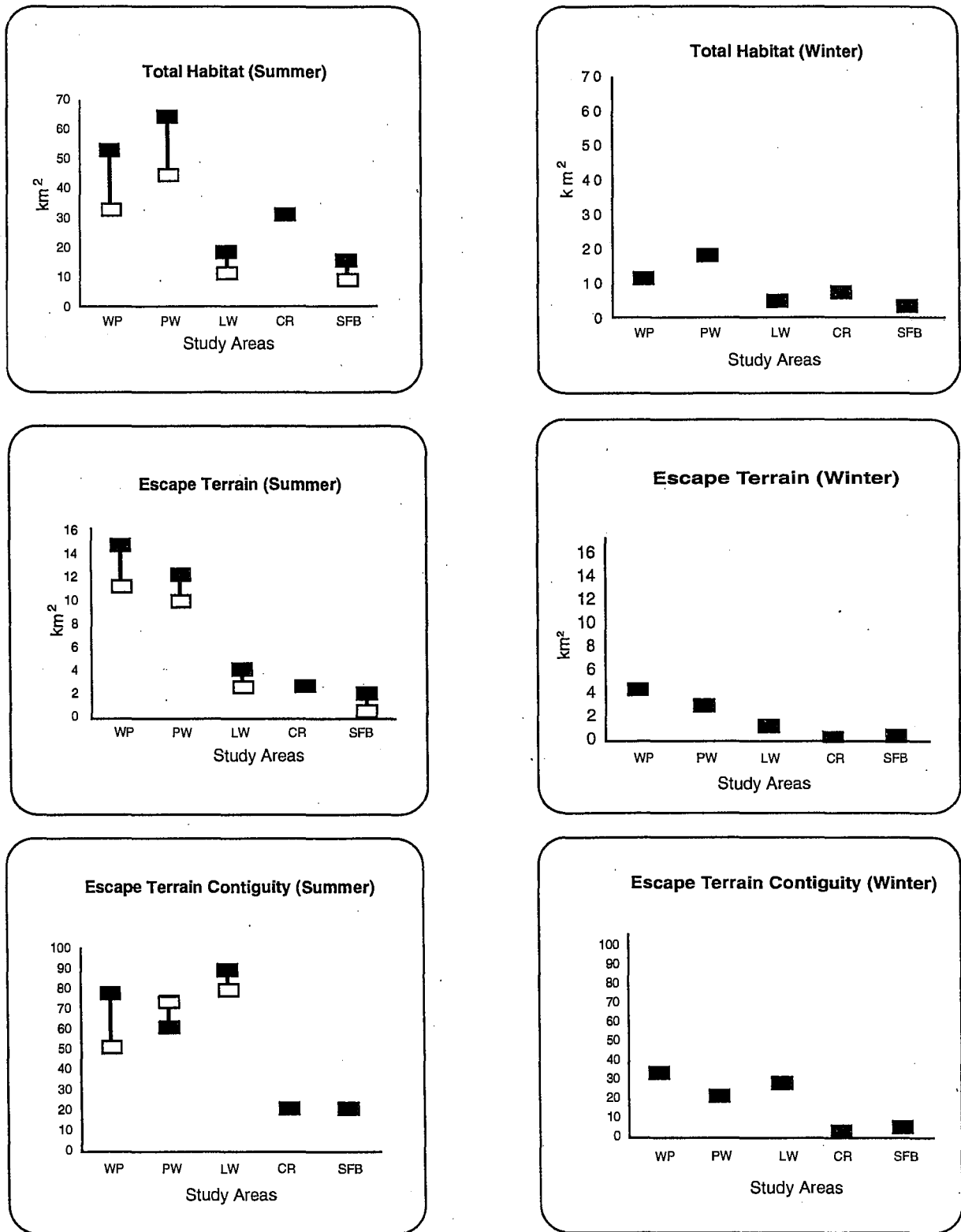


Figure 5. Values of six habitat components used to measure potential and current suitability in alpine Rocky Mountain bighorn sheep study areas in New Mexico. Potential values are shown as black boxes; current values, if different, are shown as white boxes. WP = Wheeler Peak, PW = Pecos Wilderness, LW = Latir Wilderness, CR = Culebra Range, SFB = Santa Fe Baldy.



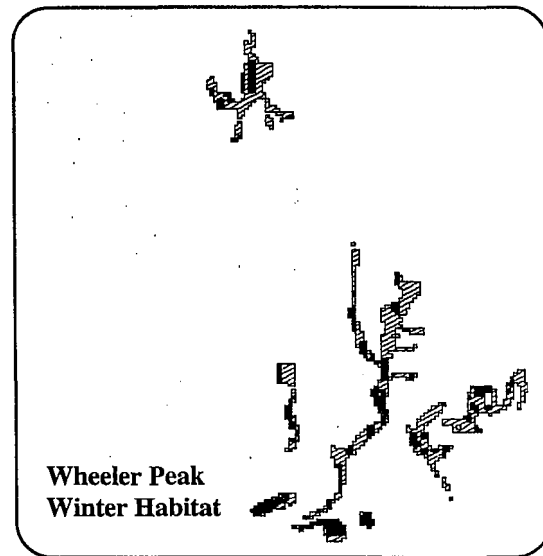
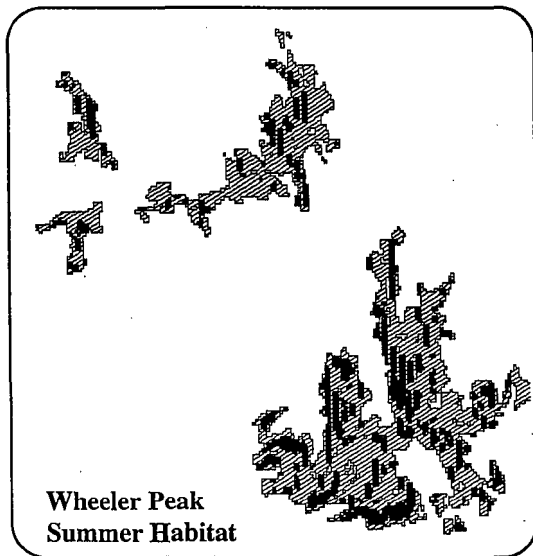
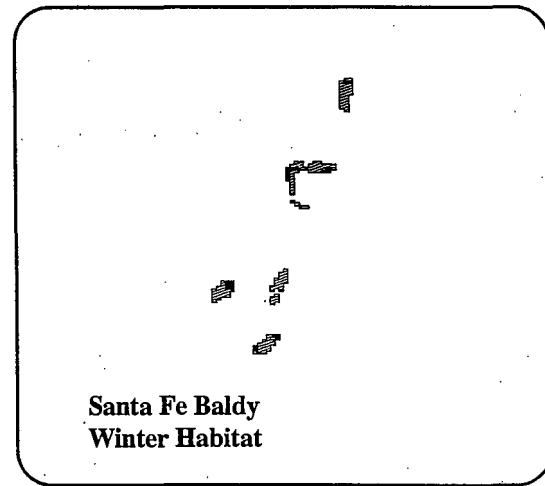
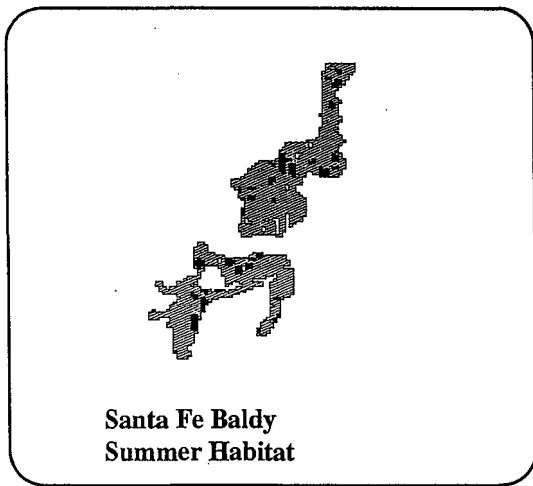
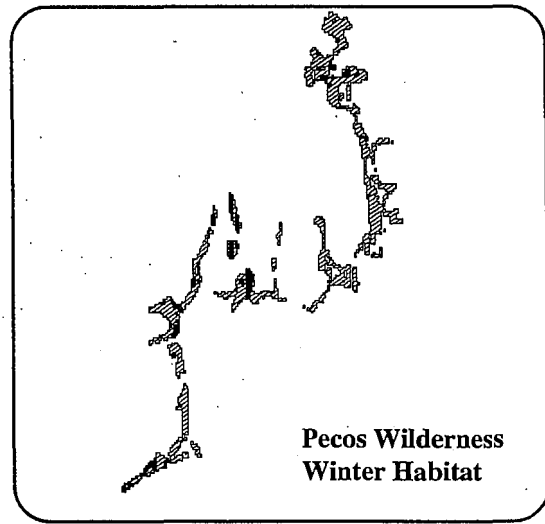
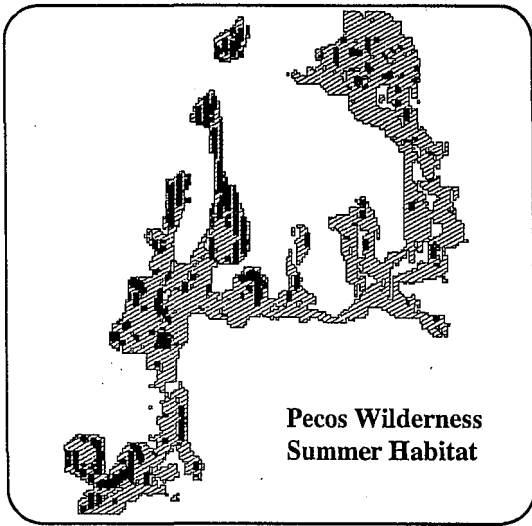


Figure 6. Potential summer and winter habitat for Rocky Mountain bighorn sheep in three alpine study areas in New Mexico. Escape terrain patches are black; open slopes 20-59% are hatched. Study areas are not shown to scale.

During winter, only 18% (range = 10-25%) of potential total habitat and 16% (range = 0-24%) of potential escape terrain occurred on snow-free slopes (Figure 6). Escape terrain contiguity averaged 54.4 (range = 20.5-88.2) in summer, but only 15.3 (range = 0-30.3) in winter, indicating that winter habitat was much more fragmented.

Summer habitat was impacted by campsites and trails in all areas (Figure 7) except the Culebra Range, which was closed to public access . On average, 22% of total habitat (range = 0-33.8%) and 14.3% (range = 0-26.7%) of escape terrain

were impacted. Little decrease in escape terrain contiguity occurred except on Wheeler Peak (Figure 5). Escape terrain contiguity in the Pecos Wilderness study area actually increased because some small scattered patches were eliminated by impacts. Winter habitat was not affected by impacts.

Wheeler Peak and Pecos Wilderness had the highest Habitat Suitability Scores because they contained the most total habitat and escape terrain (Table 3). Wheeler Peak ranked higher than the Pecos Wilderness because it had more escape terrain and higher escape terrain contiguity

Table 3. Calculations used to determine potential and current suitability for five alpine Rocky Mountain bighorn sheep study areas in New Mexico.

$$SS = \frac{\left(\frac{STH_i}{STH_{max}} \right) + \left(\frac{SET_i}{SET_{max}} \right) + \left(\frac{SETC_i}{SETC_{max}} \right) + \left(\frac{WTH_i}{WTH_{max}} \right) + \left(\frac{WET_i}{WET_{max}} \right) + \left(\frac{WETC_i}{WETC_{max}} \right)}{6}$$

where:

- SS = suitability score (potential or current)
- STH = amount (km²) of total habitat during summer
- SET = amount (km²) of escape terrain during summer
- SETC = escape terrain contiguity during summer
- WTH = amount (km²) of total habitat during winter
- WET = amount (km²) of escape terrain during winter
- WETC = escape terrain contiguity during winter.
- i = value of the component for the study area
- max = maximum value of that component for all study areas.

POTENTIAL SUITABILITY

Study Areas	Calculations	Scores
Wheeler Peak	$\frac{(52.5/64.4)+(14.3/14.3)+(76.8/88.2)+(9.5/16.4)+(3.2/3.2)+(30.3/30.3)}{6}$	0.9
Pecos Wilderness	$\frac{(64.4/64.4)+(11.8/14.3)+(66.2/88.2)+(16.4/16.4)+(2.2/3.2)+(18.3/30.3)}{6}$	0.81
Latir Wilderness	$\frac{(18/64.4)+(3.7/14.3)+(88.2/88.2)+(3.3/16.4)+(0.9/3.2)+(24.4/30.3)}{6}$	0.50
Culebra Range	$\frac{(30.3/64.4)+(2.4/14.3)+(20.7/88.2)+(5.6/16.4)+(0/3.2)+(0/30.3)}{6}$	0.21
Santa Fe Baldy	$\frac{(14.8/64.4)+(1.5/14.3)+(20.5/88.2)+(1.5/16.4)+(22/3.2)+(3.5/30.3)}{6}$	0.15

Table 3. Continued

CURRENT SUITABILITY

Study Areas	Calculations	Scores
Wheeler Peak	$(39.2/48.0) + (11.8/11.8) + (56/83.5) + (9.5/16.4) + (3.2/3.2) + (30.3/30.3)$ 6	0.84
Pecos Wilderness	$(48/48) + (10.5/11.8) + (72.2/83.5) + (16.4/16.4) + (2.2/3.2) + (18.3/30.3)$ 6	0.84
Latir Wilderness	$(13.4/48) + (3.1/11.8) + (83.5/83.5) + (3.3/16.4) + (.9/3.2) + (24.4/30.3)$ 6	0.47
Culebra Range	$(30.3/48) + (2.4/11.8) + (20.7/83.5) + (5.6/16.4) + (0/3.2) + (0/30.3)$ 6	0.24
Santa Fe Baldy	$(9.8/48) + (1.1/11.8) + (20.5/83.5) + (1.5/16.4) + (0.22/3.2) + (3.5/30.3)$ 6	0.12

HABITAT SUITABILITY

(average of potential and current suitability scores)

Study Areas	Calculations	Scores
Wheeler Peak	$(0.90 + 0.84)/2$	0.870
Pecos Wilderness	$(0.81 + 0.84)/2$	0.825
Latir Wilderness	$(0.50 + 0.47)/2$	0.485
Culebra Range	$(0.21 + 0.24)/2$	0.225
Santa Fe Baldy	$(0.15 + 0.12)/2$	0.135

during both summer and winter. High escape terrain contiguity contributed greatly to the Habitat Suitability Score of Latir Wilderness. The Culebra Range contained more total habitat than Latir Wilderness, but ranked lower because of a lack of escape terrain. Santa Fe Baldy was lacking in all habitat components.

The midpoint value (250) of Smith and Johnson's (1979:102) carrying capacity estimates for Pecos Wilderness were used to calculate carrying capacity (Table 4). Wheeler Peak, Pecos Wilderness and Latir Wilderness had adequate habitat to support self-sustaining bighorn populations (>100 animals), but the Culebra Range and Santa Fe Baldy did not.

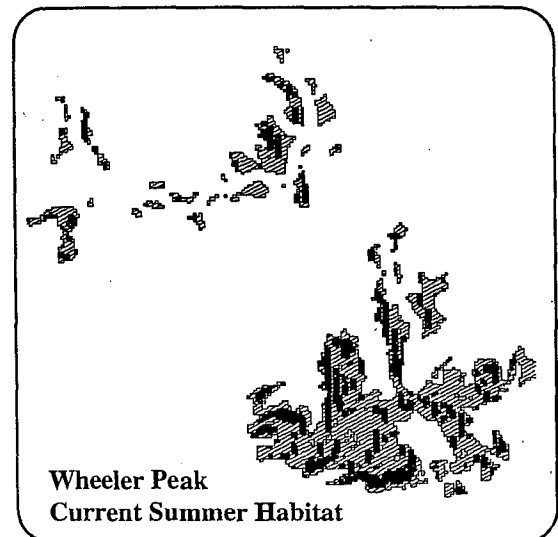
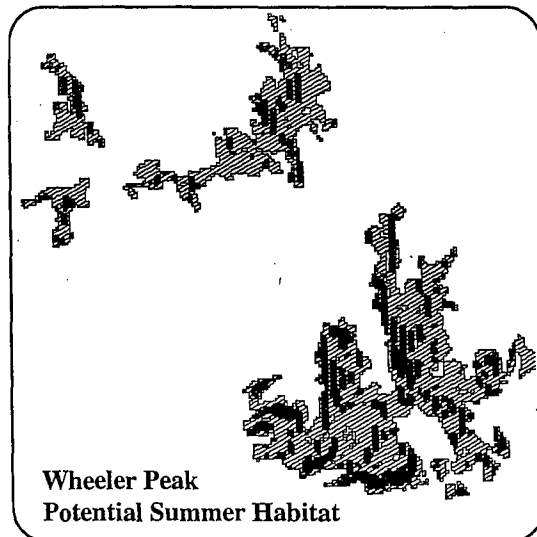
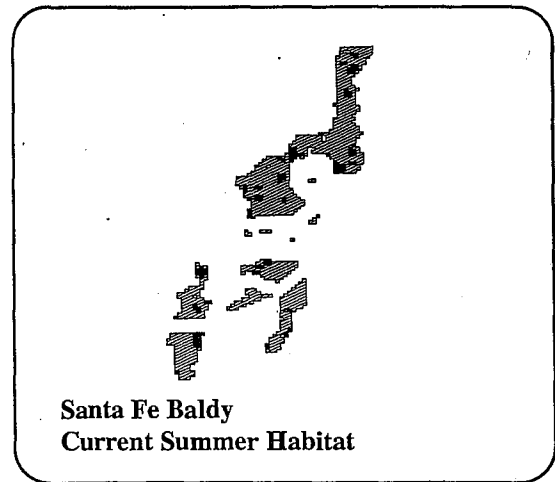
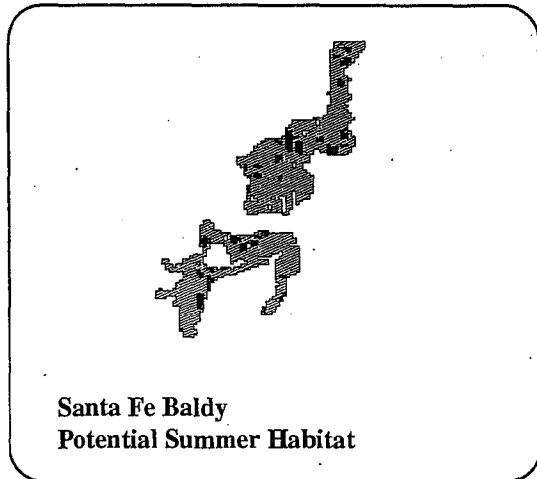
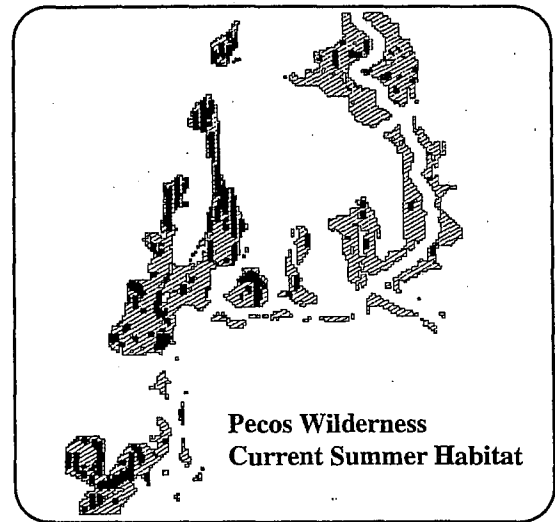
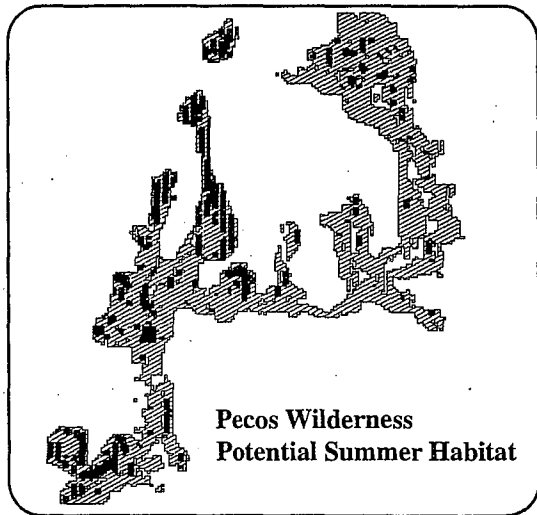


Figure 7. The effect of impacts on summer habitat in three Rocky Mountain bighorn sheep study areas in New Mexico. Potential habitat includes the total area that could be inhabited by bighorn. Current habitat includes only those areas not affected by impacts. Escape terrain patches are black; open slopes 20-59% are hatched. Study areas are not shown to scale.

Table 4. Carrying capacity calculations for five alpine Rocky Mountain bighorn sheep study areas in New Mexico. The Habitat Suitability Score (0.825) and midpoint value (250) for carrying capacity of the Pecos Wilderness population are the values for the occupied range in the calculations.

$$\frac{HSS_o}{CC_o} = \frac{HSS_i}{CC_i}$$

where:

- HSS_o = the Habitat Suitability Score of the occupied range
- CC_o = the carrying capacity (number of animals) of the occupied range
- HSS_i = the Habitat Suitability Score of study area i
- CC_i = the carrying capacity (number of animals) calculated for study area i

Study Areas	Calculations	Carrying Capacity
Wheeler Peak	(250 x 0.87) / 0.825	264 bighorn
Pecos Wilderness	(250 x 0.825) / 0.825	250 bighorn
Latir Wilderness	(250 x 0.47) / 0.825	142 bighorn
Culebra Range	(250 x 0.225) / 0.825	68 bighorn
Santa Fe Baldy	(250 x 0.135) / 0.825	40 bighorn

Low-Elevation Habitat

Thirteen desert bighorn and six low-elevation Rocky Mountain bighorn study areas in New Mexico were evaluated with this methodology. Habitat components of five study areas (hereafter referred to as historic ranges) that supported indigenous desert bighorn populations at least until 1900 (Dunn 1994) were compared to components of eight other study areas that did not historically support desert bighorn (hereafter referred to as non-historic ranges).

Historic ranges contained an average of 204 km² (79 mi²) (range = 72-421 km²) of potential total habitat and 20 km² (7.7 mi²) (range = 5.4-33 km²) of escape terrain, whereas non-historic ranges contained an average of 66 km² (25.5 mi²) (range = 42-127 km²) of potential total habitat and 5 km² (2 mi²) (range = 2-7.3 km²) of escape terrain (Figure 8). Escape terrain in historic ranges was more contiguous (\bar{x} = 61.4; range = 43-80) than in non-historic ranges (\bar{x} = 38.8; range 14-95). Water also was more available in historic

ranges than non-historic ranges. Twenty-six of 33 springs \leq 200 m (220 yds) from escape terrain were in historic ranges. Six non-historic ranges had no water sources \leq 200 m (220 yds) from escape terrain. On average, 30.4% (range = 0-63%) of total habitat in historic ranges was \leq 3.2 km (2 mi) from perennial water, whereas only 5.5% (range = 0-16%) of total habitat in non-historic ranges was \leq 3.2 km (2 mi) from perennial water.

Impacts that affected desert bighorn study areas included poor range conditions, military activities, mines, recreation sites, primitive roads, trails, and fences (Figure 9). For all 13 study areas, an average of 32.4% (range = 0-38%) of total habitat and 20.2% (range = 0-28%) of escape terrain were impacted. Contiguity did not change for 6 of the 13 study areas. Water was available to 20% less total habitat because of impacts. Impacts did not affect water availability in two study areas, but in two other study areas all perennial water $<$ 200 m (220 yds) from escape terrain were affected by human impacts.

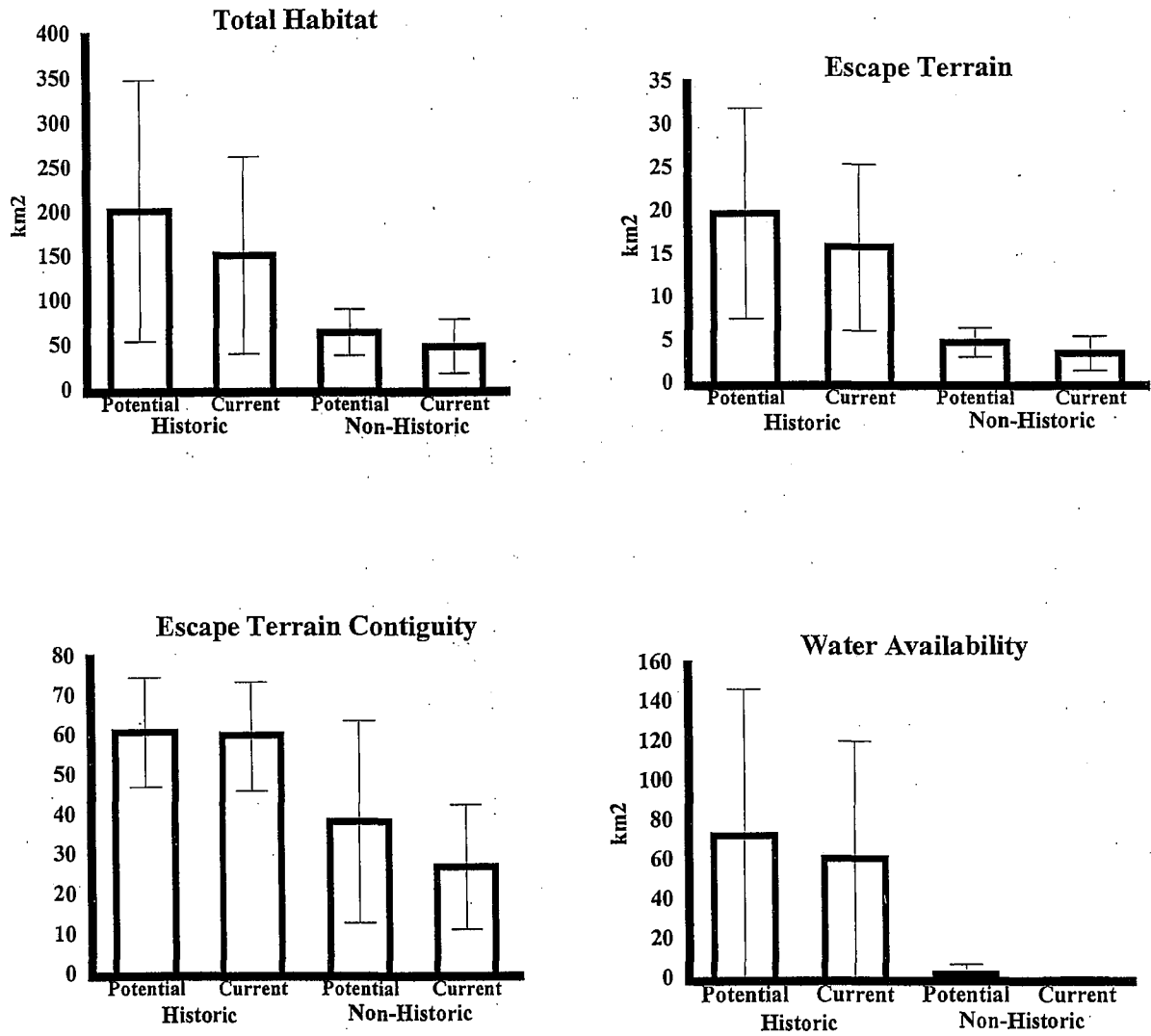


Figure 8. Values of four habitat components used to measure potential and current suitability in five historic and eight non-historic desert bighorn sheep ranges in New Mexico. Mean values are shown as bars; I-beams equal 1 standard deviation.

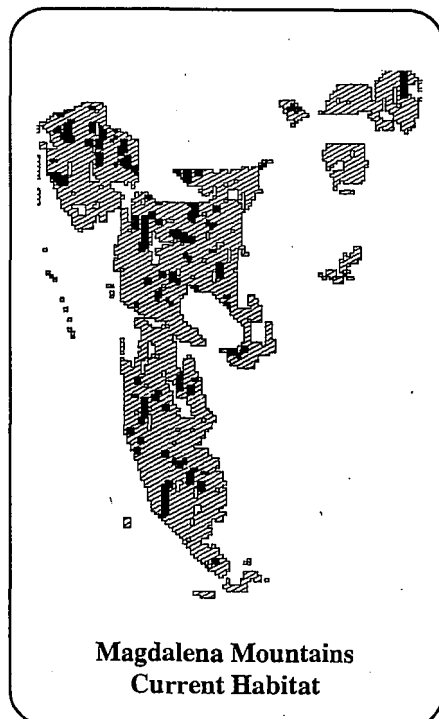
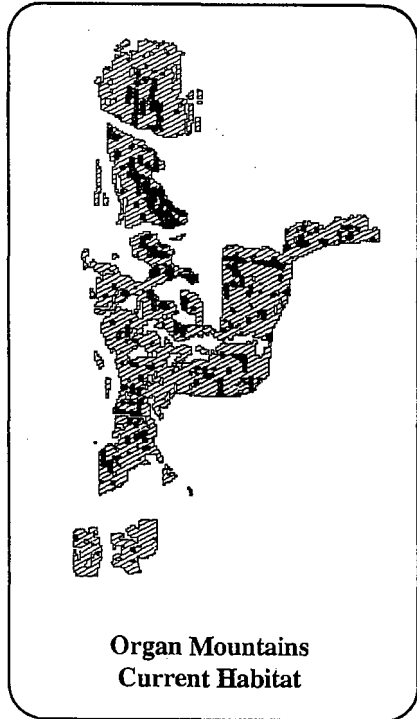
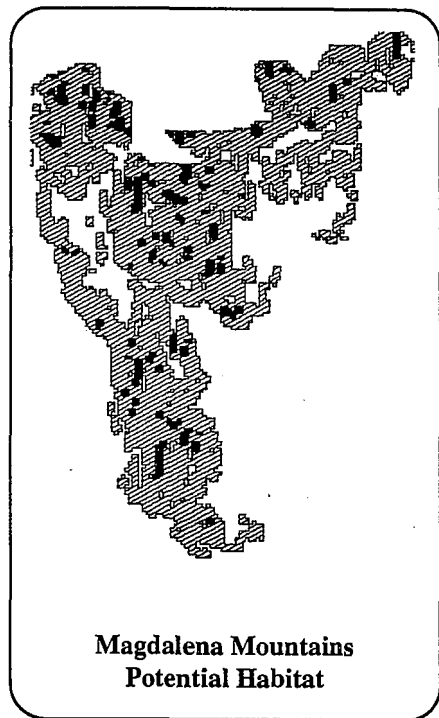
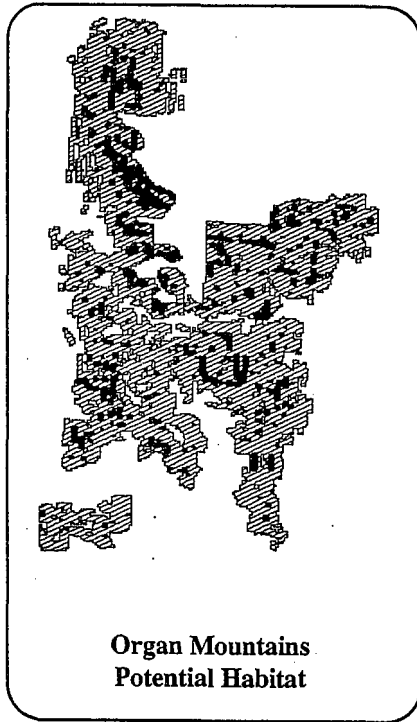


Figure 9. The effect of impacts on three desert bighorn sheep study areas in New Mexico. Potential habitat includes the total area that could be inhabited by bighorn. Current habitat includes only those areas not affected by impacts. Escape terrain patches are black; open slopes 20-59% are hatched. Study areas are not shown to scale.

Discussion

Prior to the advent of GIS, bighorn habitat was evaluated using one of two methods: (1) the conceptual method in which habitat was considered suitable if it visually appeared to contain the needed components (see Cooperrider 1986:766), or (2) a numerical scoring system (Hansen 1980, Armentrout and Brigham 1986). Hansen's (1980) method has been the most commonly used for numerical scoring. With this method, each square mile of a study area was numerically scored for quality (based on written descriptions) of each of seven habitat parameters. Based on the total score, each section was categorized as excellent, good, fair, or poor habitat. Thus, a qualitative rating was obtained, not a true measure of habitat.

Two problems can reduce the accuracy of habitat analyses when numerical scoring systems are used. First, sample units large enough to easily rate an entire mountain range may be too coarse-grained. Few mountainous areas contain homogeneous habitat throughout an entire square mile, the sample unit used by Hansen (1980:321). This problem can be rectified by having the entire section represented by the dominant habitat type (i.e., if 400 acres are steep and 240 acres are rolling hills, the section is rated as steep) or by selecting a compromise rating (i.e., moderately steep). Either strategy could result in substantial error over an entire study area.

Second, written descriptions upon which scores are based can be subjective and will compromise repeatability. Ratings of the same habitat type may vary as the attentiveness or the perceptions of evaluators vary. For example, areas rated as containing high human use by one evaluator may be rated as having medium human use by another. Subjectivity may be reduced and repeatability increased with more exact written descriptions, but not as well as when habitat is actually measured.

Use of GIS and a landscape approach is an effective and efficient means of evaluating and

comparing many areas of bighorn habitat because it provides (1) consistent measurements across all study areas, so bias towards any one study area is reduced, (2) measurement of the amount and patchiness of bighorn habitat, (3) a final score and ranking derived directly from the values of the habitat components, (4) evaluation of large areas with much less effort than if they were entirely analyzed in the field, (5) both potential and current suitability, so benefits of mitigation can be more accurately analyzed, and (6) a graphic display of the amount and distribution of bighorn habitat. High scores of historic alpine bighorn ranges and differences found between historic and non-historic desert bighorn ranges in New Mexico are evidence that this method is effective for determining where bighorn can persist.

However, carrying capacities derived from the formula in this method are crude estimates and their use is best limited to separating areas that can support ≥ 100 bighorn from those that cannot. A multitude of factors, such as population structure, food habits, and patterns of habitat use, affect how many animals a range can support (Boyd et al. 1986:524). Precise estimates of carrying capacity are difficult, if not impossible, to achieve (Strickland et al., 1994:451).

Measurement of impacts provided a quantitative database from which mitigation alternatives could be analyzed, but it was the most subjective part of this methodology. Written descriptions were used for identifying range condition and road type, buffers were placed around some impacts, and temporal variation of impacts was not measured. Errors potentially introduced by written descriptions for range condition and road type should be minimal because of the conservative criteria used. Also, poor range conditions generally represented a small percentage of total impacts because of infrequent use of steep slopes by cattle (Dodd and Brady 1986).

Different-sized buffers around impacts represented a form of data weighting. Weighting has been used to discriminate among the importance of components in habitat analyses (Cooperrider 1986:766), but often it is subjective and not necessarily a true reflection of the importance of each component in determining habitat quality. Buffers were necessary in this method to provide an adequate spatial measure of point and linear impacts.

Temporal variation of impacts (e.g., number of hikers and time of day trails were used) was not measured because data on amount and period of disturbance were not available for most study areas. These data could be important in accurately measuring the effects of impacts on bighorn. For example, Hamilton et al. (1982) determined that bighorn could be more adversely affected by a high frequency of recreation use than by a high number of recreationists.

Several measures of habitat used in other studies were not included in this method. Horizontal visibility was not measured using visual estimation of vegetative obstruction (Risenhoover and Bailey 1985, Armentrout and Brigham 1986). Using canopy cover as a surrogate measure of horizontal visibility is a much more rapid means of analyzing large areas and has been shown to be effective in identifying open vegetation by Tilton and Willard (1982) and Holl and Bleich (1983:61). However, field verification of the results is important, especially in moderately dense shrub types where horizontal visibility may be greatly reduced by the amount of foliage at the eye level of bighorn (3 ft).

Aspect and elevation were not used as surrogate measures of open vegetation (M. Gudorf, Natl. Park Serv., Denver, CO, pers. commun.), thermal cover (Gionfriddo and Krausman 1986), or limits of usable habitat (Smith et al. 1991). Southerly aspects and low elevations generally are xeric and support more open vegetation but not all vegetation in these areas is necessarily open enough for bighorn. Thermal cover has not been shown to be a major factor in determining more

than temporal distribution of bighorn (McCarty and Bailey 1994:10). Elevations <2211 m (7250 ft) were used by Smith et al. (1991) to define the boundary of usable habitat, but the relationship was unique to their study area.

Escape terrain may have been overestimated in this method because vertical slopes (i.e., slickrock (Smith and Flinders 1992)) were not eliminated and rockiness was not measured (Hansen 1980:325, Armentrout and Brigham 1986, Holl 1982). Vertical slopes (>80°) comprised <2% of the total escape terrain in the study areas because of the relatively coarse grain (100x100 m) of 1:250,000 DEMs. Rockiness was not used because most slopes $\geq 60\%$ contain at least some rocky areas and the amount of rockiness needed for an area to provide adequate escape terrain has not been quantified.

Escape terrain patches ≥ 2 ha (5 ac) were not defined as lambing areas (Armentrout and Brigham 1986, Smith et al. 1991) because this measure has not been empirically demonstrated as a minimum requirement for lambing (Van Dyke et al. 1983:6) and some desert bighorn populations do not consistently lamb in specific areas (Leslie and Douglas 1979:40). Open, steep terrain is the important habitat component for lambing, so measure of the amount and contiguity of escape terrain should be an adequate indicator of the sufficiency of each study area for lambing.

Forage diversity and abundance were not measured because bighorn can survive on wide varieties (Todd 1975, Cooperrider and Hanson 1982) and low densities of forage (Leslie and Douglas 1979:10), so the contribution of forage data in determining adequacy of habitat may not be worth the amount of effort needed to collect it.

Finally, the potential for movement between neighboring bighorn ranges was not measured because of the difficulty in quantifying the effect of barriers on intermountain movements. However, the contiguity index (Appendix G) could be used as a measure of the potential for establishing a metapopulation. Distance between ranges and amount of escape terrain within each range would be variables.

Literature Cited

- Armentrout, D. J., and W. R. Brigham. 1988. Habitat suitability rating system for desert bighorn sheep in the Basin and Range Province. U. S. Dep. Interior, Bur. Land Manage. Tech. Note No. 384. 18pp.
- Arno, S. F., and R. P. Hammerly. 1984. Timberline; mountain and arctic forest frontiers. Douglas and McIntyre Ltd., Vancouver, B.C. 304pp.
- Bailey, J. A. 1992. Managing bighorn habitat from a landscape perspective. Bienn. Symp. North. Wild Sheep and Goat Counc. 8:49-57.
- Berger, J. 1978. Group size, foraging, and antipredator ploys: an analysis of bighorn sheep decisions. *Behav. Ecol. Sociobiol.* 4:91-99.
- _____. 1990. Persistence of different-sized populations: an empirical assessment of rapid extinctions in bighorn sheep. *Cons. Biol.* 4:91-98.
- _____. 1991. Pregnancy incentives, predation constraints and habitat shifts: experimental and field evidence for wild bighorn sheep. *Anim. Behav.* 41:61-77.
- Bleich, V. C., J. D. Wehausen, and S. A. Holl. 1990. Desert-dwelling mountain sheep: conservation implications of a naturally fragmented distribution. *Cons. Biol.* 4:383-390.
- _____. 1993. Sexual segregation in desert-dwelling mountain sheep. Ph.D. Dissertation. Univ. Alaska. Fairbanks, AK. 126pp.
- Boyd, R. J., A. Y. Cooperrider, P. C. Lent, and J. A. Bailey. 1986. Ungulates. Pages 519-564 in A. Y. Cooperrider, R. J. Boyd, and H. R. Stuart, eds. Inventory and monitoring of wildlife habitat. U. S. Dep. Int. Bur. Land Manage. Service Center, Denver, CO. 858pp.
- Campbell, B. H., and R. Remington. 1981. Influence of construction activities on water-use patterns of desert bighorn sheep. *Wildl. Soc. Bull.* 9:63-65.
- Cochran, M. H., and E. L. Smith. 1983. Intermountain movements by a desert bighorn ram in western Arizona. *Desert Bighorn Counc. Trans.* 27:1-2.
- Cooperrider, A. Y., and R. M. Hansen. 1982. Forage selection by bighorn sheep ewes and lambs in south-central Colorado. *Northern Wild Sheep and Goat Counc. Trans.* 3:262-277.
- Cooperrider, A. Y. 1986. Habitat evaluation systems. Pages 757-776 in A. Y. Cooperrider, R. J. Boyd, and H. R. Stuart, eds. Inventory and monitoring of wildlife habitat. U. S. Dep. Int. Bur. Land Manage. Service Center, Denver, CO. 858pp.
- Cunningham, S. D., and J. C. deVos. 1992. Mortality of mountain sheep in the Black Canyon area of northwest Arizona. *Desert Bighorn Counc. Trans.* 36:27-29.
- DeForge, J. R., and J. E. Scott. 1982. Ecological investigations into high lamb mortality of desert bighorn sheep in the Santa Rosa Mountains, California. *Desert Bighorn Counc. Trans.* 26:65-76.

- Dodd, N. L., and W. W. Brady. 1986. Cattle grazing influences on vegetation of a sympatric desert bighorn range in Arizona. *Desert Bighorn Counc. Trans.* 30:8-13.
- Dunn, W. C. 1993. Evaluation of Rocky Mountain bighorn sheep habitat in New Mexico. Final Rept., New Mexico Dept. Game and Fish, Fed. Aid Wildl. Res. Proj. W-127-R9. 60pp.
- _____. 1994. Evaluation of desert bighorn sheep habitat in New Mexico. A revision of the Final Rept., New Mexico Dept. Game and Fish, Fed. Aid Wildl. Res. Proj. W-127-R-7. 43pp.
- Elenowitz, A. S. 1983. Habitat use and population dynamics of transplanted desert bighorn sheep in the Peloncillo Mountains, New Mexico. M. S. Thesis, New Mexico State Univ., Las Cruces. 158pp.
- Festa-Bianchet, M. 1986. Site fidelity and seasonal range use by bighorn rams. *Can. J. Zool.* 64:2126-2132.
- Foreyt, W. J., and D. A. Jessup. 1982. Fatal pneumonia of bighorn sheep following association with domestic sheep. *J. Wildl. Dis.* 18:163-168.
- Forman, R. T. T., and M. Godron. 1981. Patches and structural components for a landscape ecology. *BioScience* 31:733-740.
- Franklin, I. R. 1980. Evolutionary change in small populations. Pages 135-150 in M. E. Soule and B. A. Wilcox, eds. *Conservation biology: an evolutionary-ecological perspective*. Sinaur Assoc., Inc., Sunderland, Mass. 395pp.
- Geist, V. 1971. *Mountain sheep: a study in behavior and evolution*. Univ. Chicago Press, Chicago. 383pp.
- Gilpin, M. E. 1987. Spatial structure and population vulnerability. Pages 125-139 in M. E. Soule, ed. *Viable populations for conservation*. Cambridge Univ. Press, Cambridge. 189pp.
- Gionfriddo, J. P., and P. R. Krausman. 1986. Summer habitat use by mountain sheep. *J. Wildl. Manage.* 50:331-336.
- Goodson, N. J. 1982. Effects of domestic sheep grazing on bighorn sheep populations: a review. *North. Goat and Sheep Counc. Trans.* 3:287-313.
- _____. 1994. Persistence and population size in mountain sheep: why different interpretations? *Cons. Biol.* 8:617-618.
- Hamilton, K., S. A. Holl, and C. L. Douglas. 1982. An evaluation of the effects of recreational activity on bighorn sheep in the San Gabriel Mountains, California. *Desert Bighorn Counc. Trans.* 26:50-55.
- Hanley, T. A. 1982. The nutritional basis for food selection by ungulates. *J. Range Manage.* 35:146-151.
- Hansen, C. G. 1980. Habitat evaluation. Pages 320-335 in G. Monson and L. Sumner, eds. *The desert bighorn: its life history, ecology and management*. Univ. Arizona Press, Tucson. 370pp.
- Hass, C. 1990. Reproductive dynamics of bighorn sheep in arid and alpine environments. Rept. to New Mexico Dept. Game and Fish, Santa Fe, NM. 17pp.
- _____. 1991. Use of artificial salt stations to reduce bighorn sheep-human interactions in the Pecos Wilderness. Rept. to New Mexico Dept. Game and Fish, Santa Fe, NM. 26pp.

- Helvie, J. B. 1971. Bighorns and fences. *Desert Bighorn Counc. Trans.* 15:53-62.
- Holl, S. A. 1982. Evaluation of bighorn sheep habitat. *Desert Bighorn Counc. Trans.* 34:14-22.
- _____, and V. C. Bleich. 1983. San Gabriel mountain sheep: biological and management considerations. *San Bernardino Natl. For., San Bernardino, CA.* 135pp.
- Jessup, D. A. 1985. Diseases of domestic livestock which threaten bighorn sheep populations. *Desert Bighorn Counc. Trans.* 29:29-33.
- Johnson, B. K., and D. L. Smith. 1980. Food habits and forage preferences of bighorn sheep in alpine and subalpine communities. *Northern Wild Sheep and Goat Counc. Trans.* 6:1-17.
- Keating, Jr., J. B. 1993. The geo-positioning selection guide for resource management. *U. S. Bur. Land Manage. Tech. Note No. 389.* 64pp.
- Krausman, P. R., and J. J. Hervert. 1983. Mountain sheep responses to aerial surveys. *Wildl. Soc. Bull.* 11:372-375
- Krausman, P. R., R. C. Etchberger, and R. M. Lee. 1993. Persistence of mountain sheep. *Cons. Biol.* 7:219.
- Lande, R., and G. Barrowclough. 1987. Effective population size, genetic variation, and their use in population management. Pages 87-123 in M. E. Soule, ed. *Viable populations for conservation.* Cambridge Univ. Press, Cambridge. 189pp.
- Leslie, D. M., Jr. 1978. Differential utilization of water sources by desert bighorn sheep in the River Mountains, Nevada. *Desert Bighorn Counc. Trans.* 22:23-26.
- _____, and C. L. Douglas. 1979. Desert bighorn sheep of the River Mountains, Nevada. *Wildl. Monogr. No. 66.* 56pp.
- _____, and _____. 1980. Human disturbance at water sources of desert bighorn sheep. *Wildl. Soc. Bull.* 8:284-290.
- MacArthur, R. A., V. Geist, and R. H. Johnson. 1982. Cardiac and behavioral responses of mountain sheep to human disturbance. *J. Wildl. Manage.* 46:351-358.
- McCarty, C. W., and J. A. Bailey. 1994. Habitat requirements of desert bighorn sheep. *Colo. Div. Wildl. Special Rept. No. 69.* 27pp.
- McQuivey, R. P. 1978. The desert bighorn sheep of Nevada. *Nevada Dep. Fish and Game Biol. Bull. No. 6,* Reno, NV. 81pp.
- Miller, G. D., and E. L. Smith. 1985. Human activity in desert bighorn habitat: what disturbs sheep? *Desert Bighorn Counc. Trans.* 29:4-7.
- _____, and W. S. Gaud. 1989. Composition and variability of desert bighorn sheep diets. *J. Wildl. Manage.* 53:597-606.
- Oosting, H. J. 1956. *The study of plant communities.* W. H. Freeman and Co., San Francisco, CA. 440pp.
- Ough, W. D., and J. C. deVos, Jr. 1984. Inter-mountain travel corridors and their management implications for bighorn sheep. *Desert Bighorn Counc. Trans.* 28:32-36.

- Ramey, R. R. 1993. Evolution genetics and systematics of North American mountain sheep: implications for conservation. Ph.D. Dissertation. Cornell Univ. Ithaca, NY. 250pp.
- Risenhoover, K. L., and J. A. Bailey. 1985. Foraging ecology of mountain sheep: implications for habitat management. *J. Wildl. Manage.* 49:797-804.
- _____, _____, and L. A. Wakelyn. 1988. Assessing the Rocky Mountain bighorn sheep management problem. *Wildl. Soc. Bull.* 16:346-352.
- Sandoval, A. V. 1979. Preferred habitat of desert bighorn sheep in the San Andres Mountains, New Mexico. M. S. Thesis. Colorado State Univ., Ft. Collins, CO. 314pp.
- _____. 1988. Bighorn sheep die-off following association with domestic sheep: case history. *Desert Bighorn Counc. Trans.* 32:36-38.
- Schwartz, O., V. C. Bleich, and S. A. Holl. 1986. Genetics and the conservation of mountain sheep, *Ovis canadensis nelsoni*. *Biol. Cons.* 37:179-190.
- Scott, J. M., F. Davis, B. Csuti, R. Noss, B. Butterfield, C. Groves, H. Anderson, S. Caicco, F. D'Erchia, T. C. Edwards, Jr., J. Ulliman, and R. G. Wright. 1993. Gap analysis: a geographic approach to protection of biological diversity. *Wildl. Monogr.* No. 123. 41pp.
- Smith, D. R., and B. K. Johnson. 1979. Bighorn sheep distribution, habitat evaluation, and food habits, Pecos Wilderness, New Mexico. Final Rept. to Santa Fe and Carson National Forests, New Mexico. 185pp.
- Smith, T. S., J. T. Flinders, and D. W. Olsen. 1988. Status and distribution of Rocky Mountain bighorn sheep in Utah. *Bienn. Symp. N. Wild Sheep and Goat Counc.* 6:5-12.
- _____, _____, and D. S. Winn. 1991. A habitat evaluation procedure for Rocky Mountain bighorn sheep in the intermountain west. *Great Basin Nat.* 51:205-225.
- _____, and J. T. Flinders. 1992. Evaluation of mountain sheep habitat in Zion National Park, Utah. *Desert Bighorn Counc. Trans.* 36:4-9.
- Soule, M.E. 1980. Thresholds for survival: maintaining fitness and evolutionary potential. Pages 151-169 in M.E. Soule and B.A. Wilcox, eds. *Conservation Biology: an evolutionary-ecological perspective*. Sinauer Assoc., Inc. Sunderland, MA.
- _____, and D. Simberloff. 1986. What do genetics and ecology tell us about the design of nature reserves? *Biol. Cons.* 35:19-40.
- Stanger, M. C., J. Cresto, G. W. Workman, and T. D. Bunch. 1986. Desert bighorn sheep-riverboat interactions in Cataract Canyon, Utah. *Desert Bighorn Counc. Trans.* 30:5-7.
- Stockwell, C. A., G. C. Bateman, and J. Berger. 1991. Conflicts in national parks: a case study of helicopters and bighorn sheep time budgets at the Grand Canyon. *Biol. Cons.* 56:317-328.
- Stoddart, L. A., A. D. Smith, and T. W. Box. 1975. *Range management*. 3rd ed. McGraw-Hill book Co., New York. 532pp.

- Strickland, M. D., H. J. Harju, K. R. McCaffery, H. W. Miller, L. M. Smith, and R. J. Stoll. 1994. Harvest management. Pages 445-473 in T. A. Bookhout, ed. Research and management techniques for wildlife and habitats. Fifth ed. The Wildlife Society, Bethesda, MD. 740pp.
- The Technical Staff. 1990. Guidelines for management of domestic sheep in the vicinity of desert bighorn habitat. Desert Bighorn Counc. Trans. 34:33-35.
- Thomas, C.D. 1990. What do real population dynamics tell us about minimum viable population sizes? *Cons. Biol.* 4:324-327.
- Tilton, M. E., and E. E. Willard. 1982. Winter habitat selection by mountain sheep. *J. Wildl. Manage.* 46:359-366.
- Todd, J. W. 1975. Foods of Rocky Mountain bighorn sheep in southern Colorado. *J. Wildl. Manage.* 39:108-111.
- U. S. Geological Survey. 1987. Digital elevation models. Data Users Guide 5. U. S. Dep. Interior, U. S. Geol. Survey. Reston, VA. 38pp.
- VanDyke, W. A., A. Sands, J. Yoakum, A. Polenz, and J. Blaisdell. 1983. Wildlife habitats in managed rangelands—the Great Basin of southeastern Oregon. Bighorn Sheep. Genl. Tech. Rept. PNW-159. Pacific Northwest Forest and Range Experiment Stn. U. S. Dept. Agric. Forest Service. 37pp.
- Webster, D. 1988. Introduction to geographic information systems and MOSS. TGS Technology, Inc. Bur. of Land Manage. Operations. Lakewood, CO. 245pp.
- Wehausen, J. D. 1980. Sierra Nevada bighorn sheep: history and population ecology. Ph.D. Thesis, Univ. Michigan, Ann Arbor. 240pp.
- _____. 1983. White Mountain bighorn sheep: an analysis of current knowledge and management alternatives. Inyo Natl. Forest Admin. Rept. Contract No. 53-9JC9-0-32. Bishop, CA. 93pp.
- _____. 1996. Rapid extinction of mountain sheep populations revisited. *J. Wildl. Manage.* In review.
- Weisenberger, M.E., P.R. Krausman, M.C. Wallace, D.W. De Young, and O.E. Maughan. 1996. Effects of simulated jet aircraft noise on heart rate and behavior of desert ungulates. *J. Wildl. Manage.* 60:52-61.
- Welsh, G. W. 1971. What's happening to our sheep? Desert Bighorn Counc. Trans. 15:63-73.
- Whitfield, M. B., and B. L. Keller. 1984. Bighorn sheep of the Teton range, Wyoming: ecology of a remnant population. *N. Wild Sheep and Goat Counc. Trans.* 4:120-136.
- Witham, J. H., and E. L. Smith. 1979. Desert bighorn movements in a southwestern Arizona mountain complex. Desert Bighorn Counc. Trans. 23:20-24.
- Zill, D. G. 1992. Calculus. 3rd ed. PWS-Kent Publ. Co. 1051pp.

Appendix A

Glossary of MOSS and MAPS Commands Used in GIS Analysis of Bighorn Habitat

CLUMP - A command to combine cells that have a common value (i.e., $\geq 60\%$ slope) and are within a specified distance from one another. Options: AT (distance) specifies the maximum distance (measured in grid spaces between cell centers) separating cells that are to be combined together. The value was 2 (i.e. 200 m (220 yd) real distance) for this analysis. DIAGONALLY specifies that the otherwise circular neighborhood defined by AT (distance) is to be extended diagonally to encompass a square.

Command Line: **CLUMP** (old coverage) AT (distance) DIAGONALLY FOR (new coverage)

Example: CLUMP mtn.PET AT 2 DIAGONALLY FOR mtn.PETCLP

EXTRACT - A command to create a new coverage only of cells with certain values (i.e., $\geq 60\%$ slopes).

Command Line: **EXTRACT** (old coverage) FOR (new coverage) , ASSIGNING (new value) TO (old value)

Example: **EXTRACT** mtn.PTH for mtn.PET , ASSIGNING 1 TO 60 through 1000

MATH (intersect) - A command to create a new coverage by multiplying the values of one coverage with those of another coverage on a cell-by-cell basis. Note: EXTRACT is then used to create a discrete coverage⁸.

Command Line: **MATH** (old coverage) * (old coverage) FOR (new coverage)

Example: **MATH** mtn.OPEN * mtn.DEM FOR mtn.BASE

MATH (subtract)- A command to create a new coverage by subtracting the values of one coverage from those of another coverage on a cell-by-cell basis. Note: EXTRACT is used to create a discrete coverage.

Command Line: **MATH** (old coverage) - (old coverage) FOR (new coverage)

Example: **MATH** mtn.PTH- mtn.HUMIMP FOR mtn.CTH

LOCATION - A data description command in which the coordinate of any point on a map is determined.

Command Line: **LOCATE** (cross hair input)

PROJECT - A command to change the map projection of an existing coverage or Digital Elevation Model.

Command Line: **PROJECT** mtn.DEM

What is the projection for the input map? UTM

What is the projection for the output map? UTM

What is the ellipsoid for the output map? Clarke 1866

Longitude of any point with the UTM zone? -106

Latitude of any point within the UTM zone? 34

Cell Width of output map? 100

Cell Height of output map? 100

⁸ Continuous coverages are comprised of essentially uninterrupted data sets. Discrete coverages are comprised of data grouped into distinct categories (i.e., slopes $\geq 20\%$, slopes $\geq 60\%$).

SLOPE - A neighborhood analysis command in which a new coverage of percent slope is created from a Digital Elevation Model. Within a 3x3 cell window, elevation of the central, or target cell, is compared to the elevation of and distance to surrounding cells. The maximum slope determined in the window is assigned to the target cell. Options: **MATRIX** specifies window size (in number of cells per side). **MAXIMUM** specifies that the maximum slope calculated is to be assigned to the target cell. **MASK 0** specifies if any cell in the window has an elevation of 0, the target cell will be assigned a slope of 0.

Command Line: **SLOPE** (old coverage) **MAXIMUM MATRIX** (#) **MASK 0 FOR** (new coverage)

Example: **SLOPE mtn.BASE MAXIMUM MATRIX 3 MASK 0 FOR mtn.SLOPE**

ZONE (buffer) - A raster distance analysis command in which a buffer or zone of user-specified distance is created around any geographic data identified in the coverage.

Command Line: **ZONE** (old coverage) **TO** (distance in meters) **FOR** (new coverage).

Example: **ZONE mtn.WATPRIM TO 3200 FOR mtn.WATZONE**

Appendix B

Coverage Names Used in GIS Analysis of Bighorn Habitat.

Data Base Preparation

*mtn.DEM*⁹ - DEM that has been projected to UTM projection.

mtn.OPEN - areas with $\leq 25\%$ canopy cover. (Note: *mtn.OPEN* has a value of 1 for all cells that are within areas where canopy cover is $\leq 25\%$.)

mtn.BASE - *mtn.DEM* intersected with *mtn.OPEN*.

mtn.SLOPE - initial slope coverage generated from *mtn.BASE* using neighborhood analysis.

Potential Suitability

mtn.PTH - Potential Total Habitat. Slopes $\geq 20\%$ extracted from *mtn.SLOPE*.

mtn.PET - Potential Escape Terrain. Slopes $\geq 60\%$ extracted from *mtn.PTH*.

mtn.PETCLP - *mtn.PET* after cells have been clumped into patches.

mtn.PETLOC - locations of center of escape terrain patches in *mtn.PETCLP*.

Low Elevation Habitat Only

mtn.PERWAT - All perennial water sources.

mtn.PETBUF - *mtn.PET* with a 200 m (220 yd) buffer around escape terrain.

mtn.PWATPRIM - Primary water sources, i.e. perennial water ≤ 200 m (220 yds) from escape terrain. Created by intersecting *mtn.PERWAT* with *mtn.PETBUF*.

mtn.PWATPRIMB - *mtn.PWATPRIM* buffered to 3.2 km (2 mi).

mtn.PWATAVAIL - *mtn.PWATPRIMB* intersected with *mtn.PTH* to determine how much total habitat is ≤ 3.2 km (2 mi) from primary water sources.

Alpine Habitat Only

mtn.SFS - snow-free slopes available as alpine winter range.

mtn.WINPTH - Potential Total Habitat available during winter. Created by intersecting *mtn.SFS* with *mtn.PTH*.

mtn.WINPET - Potential Escape Terrain available during winter. Created by intersecting *mtn.SFS* with *mtn.PET*.

mtn.WINPETCLP - *mtn.WINPET* after cells have been clumped into patches.

mtn.WINPETLOC - locations of centers of escape terrain patches in *mtn.WINPETCLP*.

Current Suitability

mtn.IMPACTS - all impacts with their appropriate buffers merged into one coverage. Data may be stored separately in the following coverages:

mtn.PRC - coverage of areas in poor range condition

mtn.MINES - mines with 500 m buffers.

mtn.RD - coverage of improved and primitive roads with 200 and 500 m buffers, respectively.

mtn.REC - recreation sites (picnic and campgrounds, scenic viewpoints, visitor centers) with 500 m buffers.

mtn.TRL - hiking trails with 200 m buffers.

mtn.MILZONE - area affected by military operations.

mtn.CTH - Current Total Habitat. Created by subtracting *mtn.IMPACTS* from *mtn.PTH*.

mtn.CET - Current Escape Terrain. Created by subtracting *mtn.IMPACTS* from *mtn.PET*.

⁹ *mtn* - location to insert study area acronym, i.e., WP.PTH = Wheeler Peak Potential Total Habitat

mnt.CETCLP - *mnt.CET* after cells have been clumped into patches.

mnt.CETLOC - locations of centers of escape terrain patches in *mnt.CETCLP*.

Low-Elevation Habitat Only

mnt.CWATPRIM - Primary water sources not affected by human impacts. Created by intersecting *mnt.PWATPRIM* with *mnt.CTH*.

mnt.CETBUF - *mnt.CET* with a 200 m (220 yd) buffer around escape terrain.

mnt.CWATPRIMB - *mnt.CWATPRIM* buffered to 3.2 km (2 mi).

mnt.CWATAVAIL - *mnt.CWATPRIMB* intersected with *mnt.CTH* to determine how much total habitat is ≤ 3.2 km (2 mi) from primary water sources.

Alpine Habitat Only

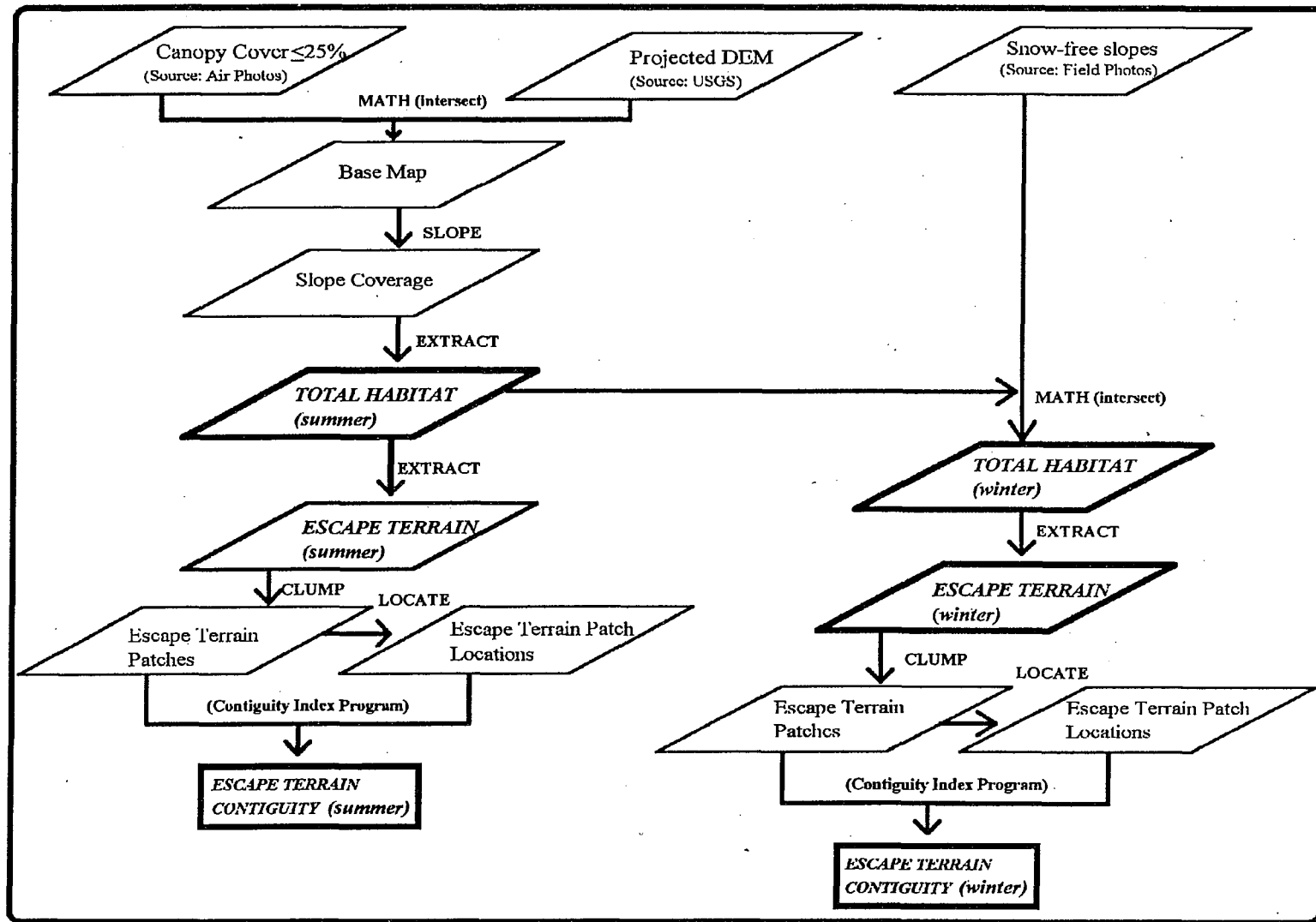
mnt.WINCTH - Total Habitat available during winter that is not affected by human impacts. Created by intersecting *mnt.WR* with *mnt.CTH*.

mnt.WINCET - Escape Terrain available during winter that is not affected by human impacts. Created by intersecting *mnt.WR* with *mnt.CET*.

mnt.WINCETCLP - *mnt.WINCET* after cells of escape terrain have been clumped into patches.

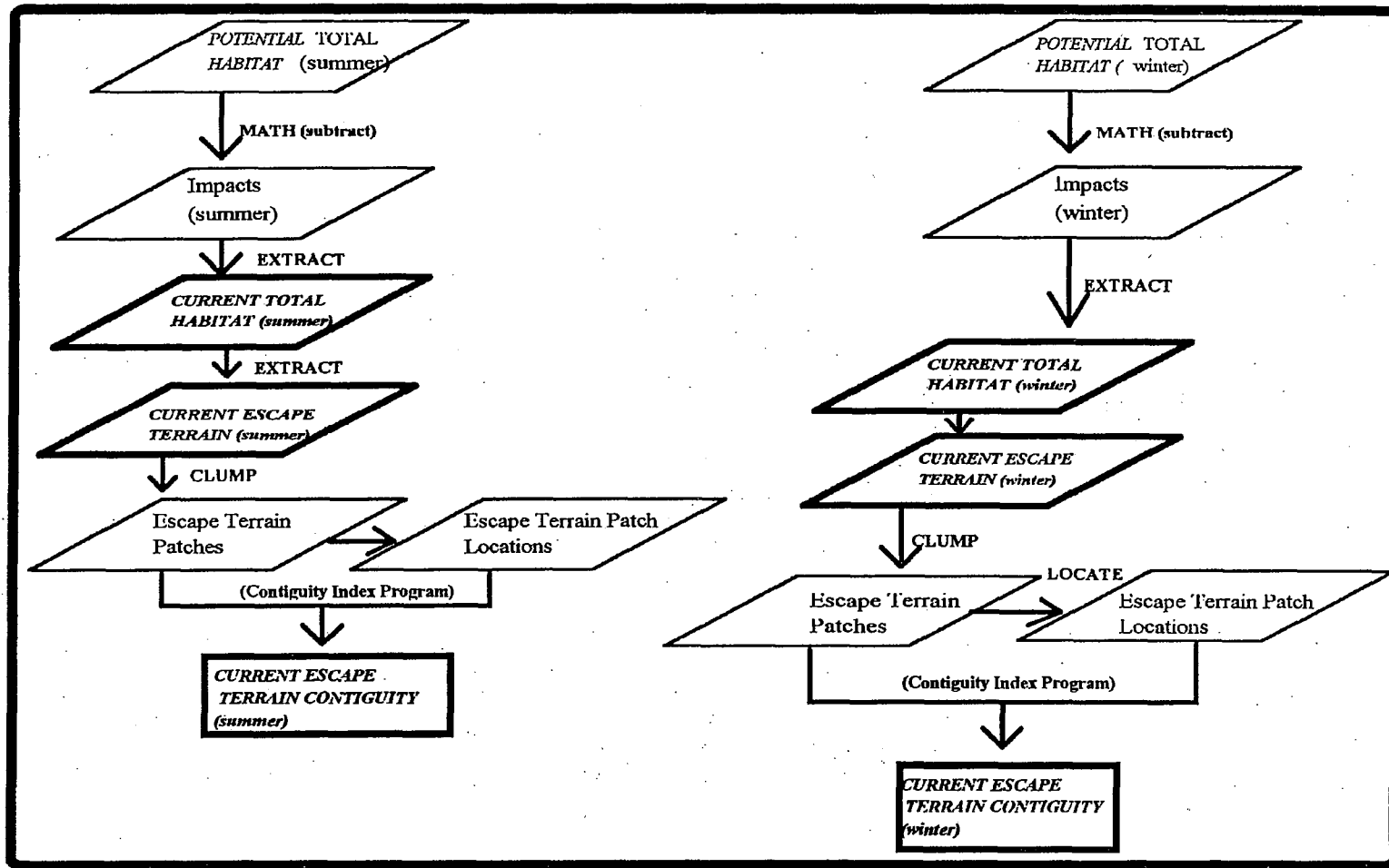
mnt.WINCETLOC - locations of the centers of escape terrain patches in *mnt.WINCETCLP*.

31

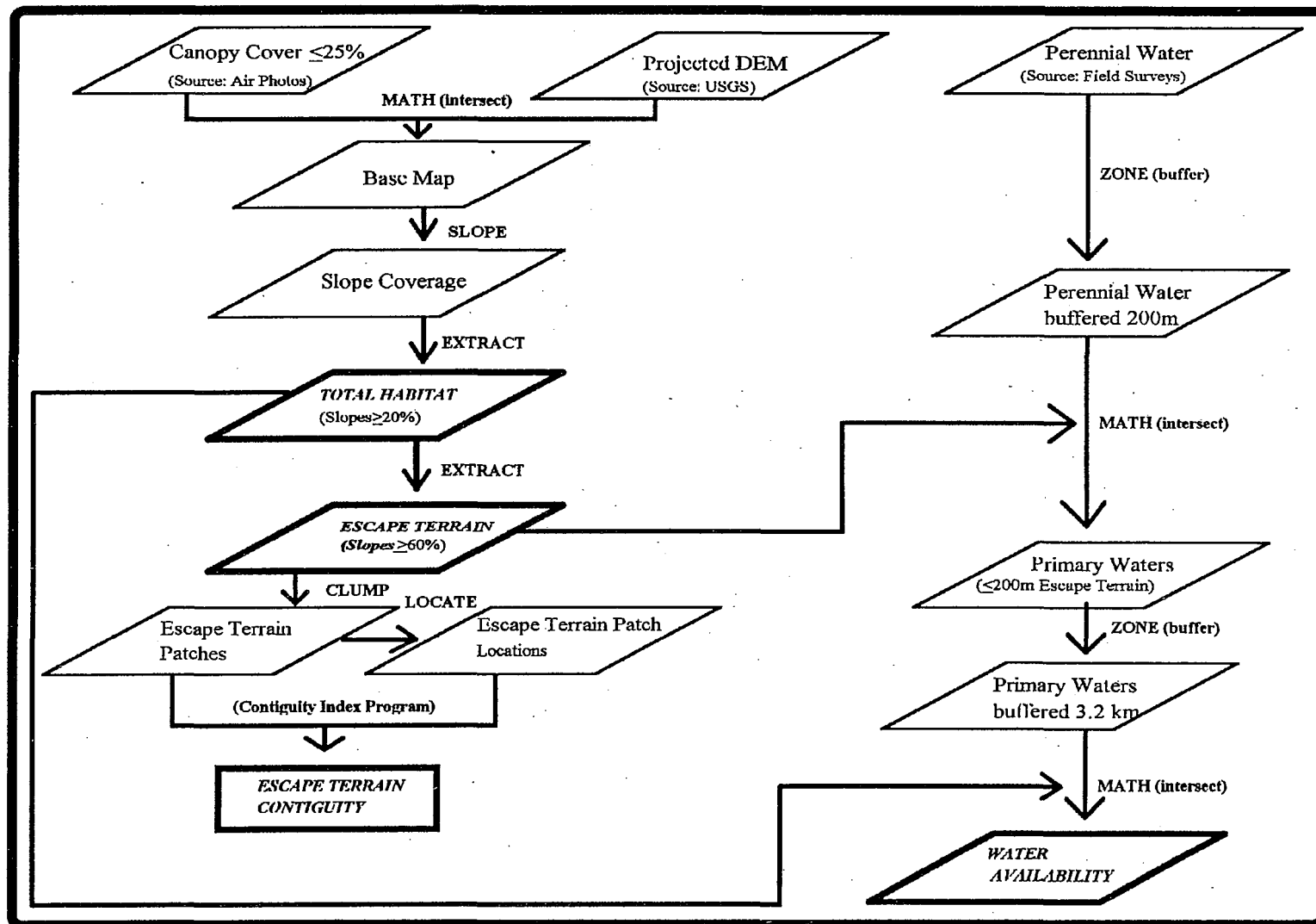


Appendix C

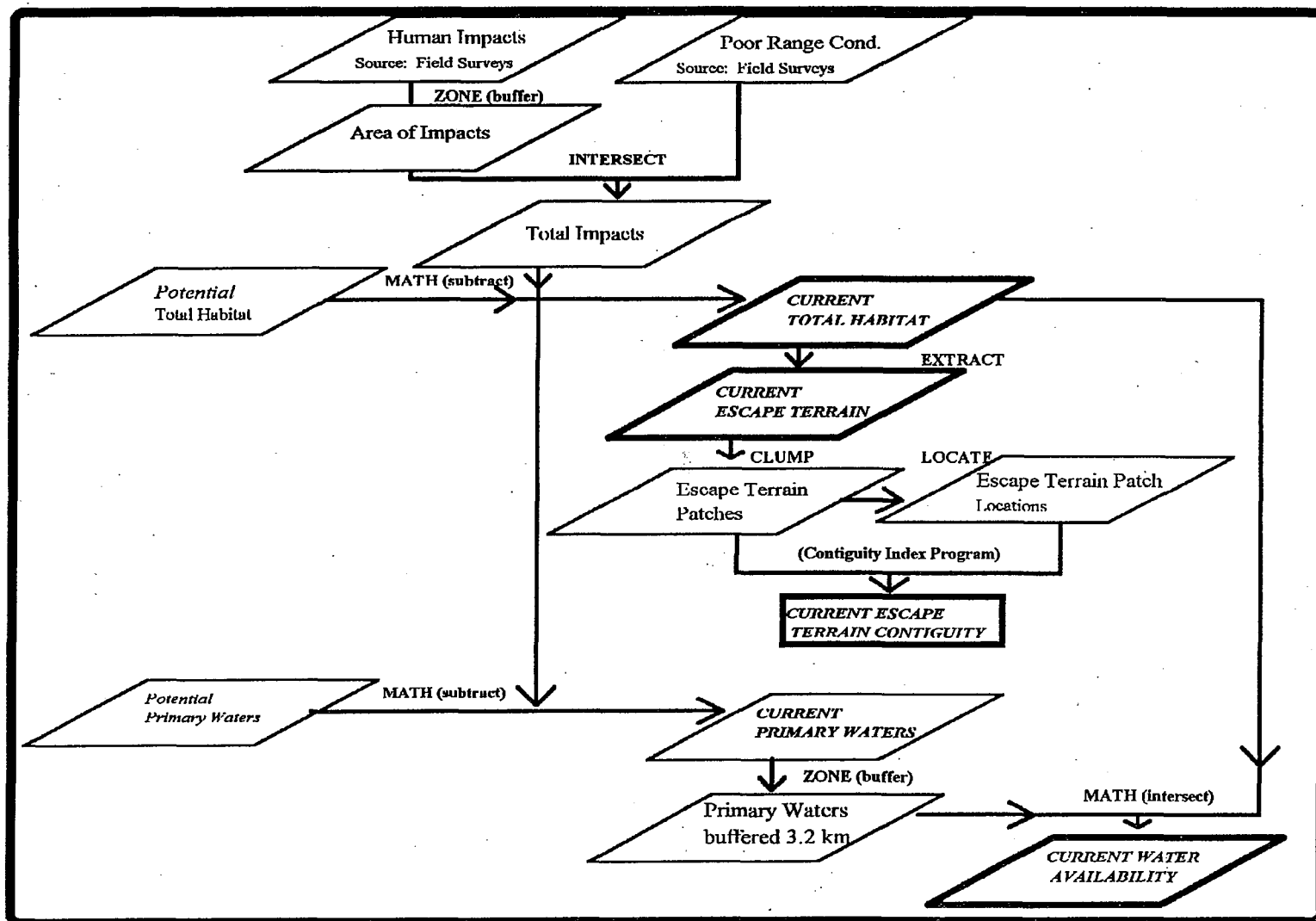
Appendix C. Flow diagram of the steps for measuring potential alpine bighorn sheep habitat. Coverages used in calculating potential suitability are in bold outlines. GIS commands are in bold print between coverages.



Appendix D. Flow diagram of the steps for measuring current alpine bighorn sheep habitat. Coverages used in calculating current suitability are in bold outlines. GIS commands are in bold print between coverages.



Appendix E. Flow diagram of the steps for measuring potential low-elevation bighorn sheep habitat. Coverages used in calculating potential suitability are in bold outlines. GIS commands are in bold print between coverages.



Appendix F. Flow diagram of the steps for measuring current low-elevation sheep habitat. Coverages used in calculating current suitability are in bold outlines. GIS commands are in bold print between coverages.

Appendix G

BASIC Program for Calculating Contiguity Indices

This program will calculate an escape terrain contiguity index from a file (see line 200) of northing ("Y") and easting ("X") UTM coordinates (both in meters) and sizes (also in meters) of escape terrain patches.

```
10 ' Program CONTIGUITY
20 ' By: Bruce T. Milne
30 ' University of New Mexico
40 ' Albuquerque, NM 87131
50 ' 4 Feb 93
60 ' (505)277-5356  bmilne@golondrinas.unm.edu
70 '
80 ' Modifications by: Gregory A. Baird
90 ' New Mexico Dept. of Game and Fish
100 ' Santa Fe, NM 87504
110 ' 20 May 93
120 ' (505)827-9927
130 '
140 DIM XY(110,3),T(110),D(110,2),N(108,2),G(108,2),S(108)
150 ' d(a,b)  d(a,1) = neighbor patch id number
160 '        d(a,2) = distance to neighbor from target
170 ' g()    x,y graphing coordinates of patches
180 '
190 FILES"**.dat
200 INPUT"Enter name of data file to read ",Z$
210 OPEN Z$ FOR INPUT AS#1
220 '
230 INPUT#1,X,Y,MASS
240  C=C+1  'count patches
250  XY(C,1)=X  'put x coordinate in array
260  XY(C,2)=Y  'put y coordinate in array
270  XY(C,3)=MASS  'put mass in array
280  IF EOF(1)=0 GOTO 230 'test for end of file
290 '
300  CLS:SCREEN 2
310 '
320  PRINT"There are ";C;" patches."
330  PRINT
340  PRINT "Enter the radius distance to be used "
350  INPUT "in forming the index (in meters): ",RADDIST
```

```

360 '
370 FOR K = 1 TO C
380 '
390 ' get distances from target to all other sites
400 '
410 FOR I=1 TO C
420 D(I,1)=0:D(I,2)=0
430 D(I,1)=I
440 D(I,2)=((XY(K,1)-XY(I,1))^2 + (XY(K,2)-XY(I,2))^2)^.5
450 PSET(G(I,1),150-G(I,2))
460 NEXT I
470 '
480 'Sort the distances to find neighbors
490 GOSUB 770
500 '
510 ' distances have been sorted. Now, use the RADDIST to find
520 ' neighbors within that radius.
530 '
540 DISTX=0:DISTY=0:AREAXY=0
550 NUSED=0 'counter of legal neighbors used so far
560 CC = 2 'pointer to closest patch in distance array
570 '
580 DISTX=XY(D(CC,1),1)
590 DISTY=XY(D(CC,1),2)
600 AREAXY=XY(D(CC,1),3)
610 R2=(XY(K,1)-DISTX)^2 + (XY(K,2)-DISTY)^2
620 DIST = SQR(R2)
630 '
640 IF DIST > RADDIST GOTO 720
650 ' Force between target and center of recipient.
660 FORCE = ((XY(K,3)) * AREAXY)/R2
670 CONTIND = CONTIND+FORCE
680 NUSED=NUSED+1
690 CC=CC+1
700 GOTO 570
710 '
720 NEXT K
730 CONTIND = CONTIND/C
740 PRINT "Average force = ";CONTIND
750 PRINT " for ";C;" patches with radius of ";RADDIST;" meters."
760 END
770 ' sort
780 '
790 FLAG=0
800 FOR I=1 TO C-1

```

```
810 IF D(I,2)>D(I+1,2) THEN  
HOLD(1)=D(I+1,1):HOLD(2)=D(I+1,2):D(I+1,1)=D(I,1):D(I+1,2)=D(I,2)  
:D(I,1)=HOLD(1):D(I,2)=HOLD(2):FLAG=1  
820 NEXT I  
830 IF FLAG=1 THEN GOTO 790  
840 '  
850 RETURN  
—>
```

REPORT DOCUMENTATION PAGE

Form Approved
OMB No. 0704-0188

Public reporting burden for this collection of information is estimated to average 1 hour per response, including the time for reviewing instructions, searching existing data sources, gathering and maintaining the data needed, and completing and reviewing the collection of information. Send comments regarding this burden estimate or any other aspect of this collection of information, including suggestions for reducing this burden, to Washington Headquarters Services, Directorate for Information Operations and Reports, 1215 Jefferson Davis Highway, Suite 1204, Arlington, VA 22202-4302, and to the Office of Management and Budget, Paperwork Reduction Project (0704-0188), Washington, DC 20503.

1. AGENCY USE ONLY (Leave blank)	2. REPORT DATE September 1996	3. REPORT TYPE AND DATES COVERED Final
----------------------------------	----------------------------------	---

4. TITLE AND SUBTITLE Evaluating Bighorn Habitat: A Landscape Approach	5. FUNDING NUMBERS
---	--------------------

6. AUTHOR(S) William C. Dunn	
-------------------------------------	--

7. PERFORMING ORGANIZATION NAME(S) AND ADDRESS(ES) U.S. Department of the Interior Bureau of Land Management National Applied Resource Sciences Center P.O. Box 25047 Denver, CO 80225-0047	8. PERFORMING ORGANIZATION REPORT NUMBER BLM/RS/ST-96/005+6600
--	---

9. SPONSORING/MONITORING AGENCY NAME(S) AND ADDRESS(ES)	10. SPONSORING/MONITORING AGENCY REPORT NUMBER
---	--

11. SUPPLEMENTARY NOTES

12a. DISTRIBUTION/AVAILABILITY STATEMENT	12b. DISTRIBUTION CODE
--	------------------------

13. ABSTRACT (Maximum 200 words)

This technical note describes a method that incorporates a landscape approach with the use of Geographic Information Systems (GIS) to measure habitat and impacts for Rocky Mountain and desert bighorn sheep and to rank potential transplant sites. Potential suitability (the inherent capability to support bighorn sheep) and current suitability (the effect of impacts) is determined for each study area.

14. SUBJECT TERMS <ul style="list-style-type: none"> <li style="width: 30%;">• Rocky Mountain Bighorn Sheep <li style="width: 30%;">• Habitat <li style="width: 30%;">• Landscape Approach <li style="width: 30%;">• Desert Bighorn Sheep <li style="width: 30%;">• GIS <li style="width: 30%;">• Escape Terrain Contiguity <li style="width: 30%;">• Escape Terrain <li style="width: 30%;">• Patches 	15. NUMBER OF PAGES 54
16. PRICE CODE	

17. SECURITY CLASSIFICATION OF REPORT Unclassified	18. SECURITY CLASSIFICATION OF THIS PAGE Unclassified	19. SECURITY CLASSIFICATION OF ABSTRACT Unclassified	20. LIMITATION OF ABSTRACT UL
---	--	---	--------------------------------------