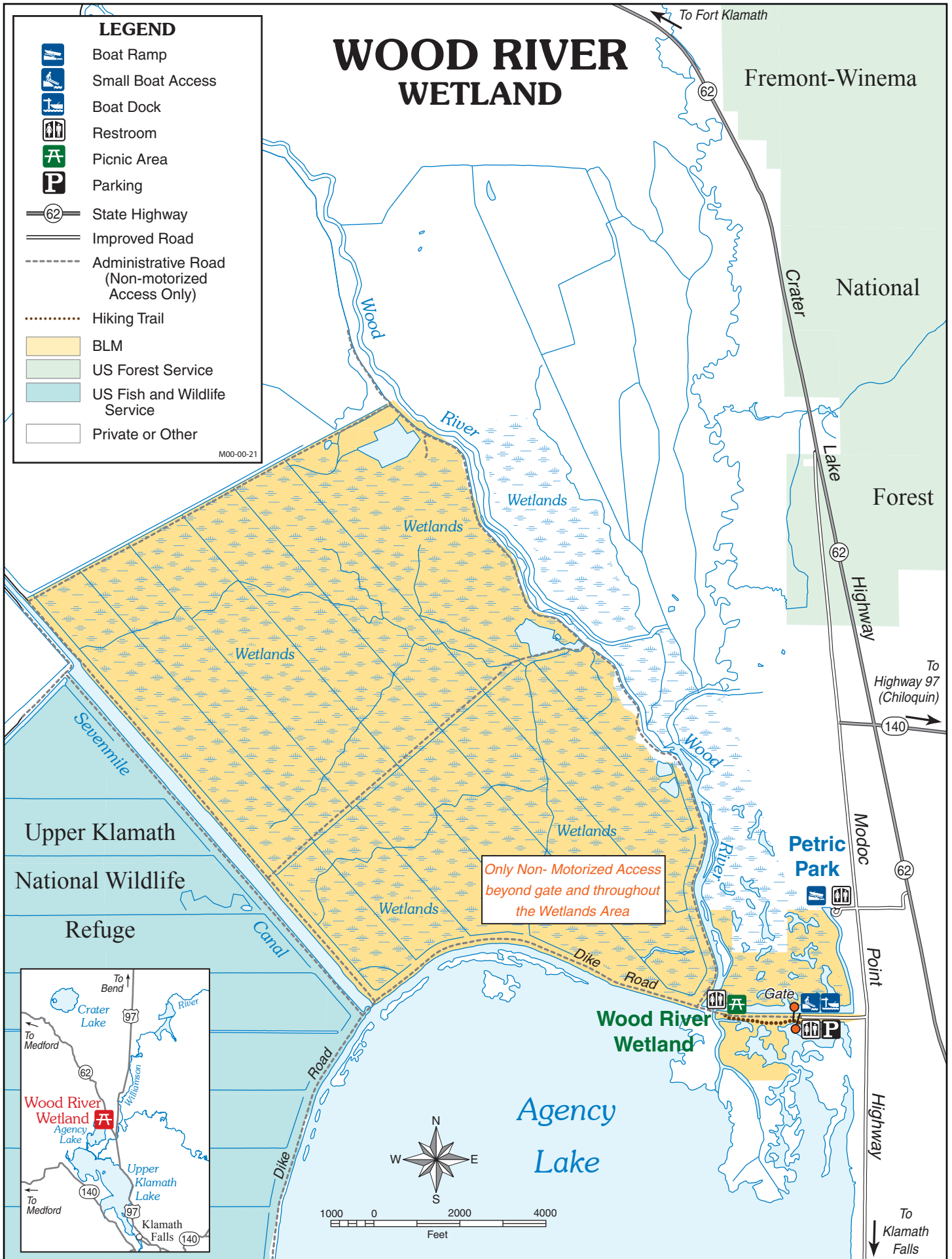


# WOOD RIVER WETLAND

## LEGEND

-  Boat Ramp
-  Small Boat Access
-  Boat Dock
-  Restroom
-  Picnic Area
-  Parking
-  State Highway 62
-  Improved Road
-  Administrative Road (Non-motorized Access Only)
-  Hiking Trail
-  BLM
-  US Forest Service
-  US Fish and Wildlife Service
-  Private or Other

M00-00-21



Only Non- Motorized Access beyond gate and throughout the Wetlands Area

Upper Klamath National Wildlife Refuge

Wood River Wetland

Wood River Wetland

Agency Lake

Petric Park

Fremont-Winema National Forest

National Forest

Forest

Highway 62

To Highway 97 (Chiloquin)

Highway 140

Modoc Point

Highway 62

Highway 62

Highway 62

To Klamath Falls

To Fort Klamath

Highway 62

Crater Lake

Highway 62

Highway 62

Highway 62

Gate

Highway 62

Highway 62

