

# Kirkland Mine and BLM Kick off Meeting/ Site visit 5/24/17

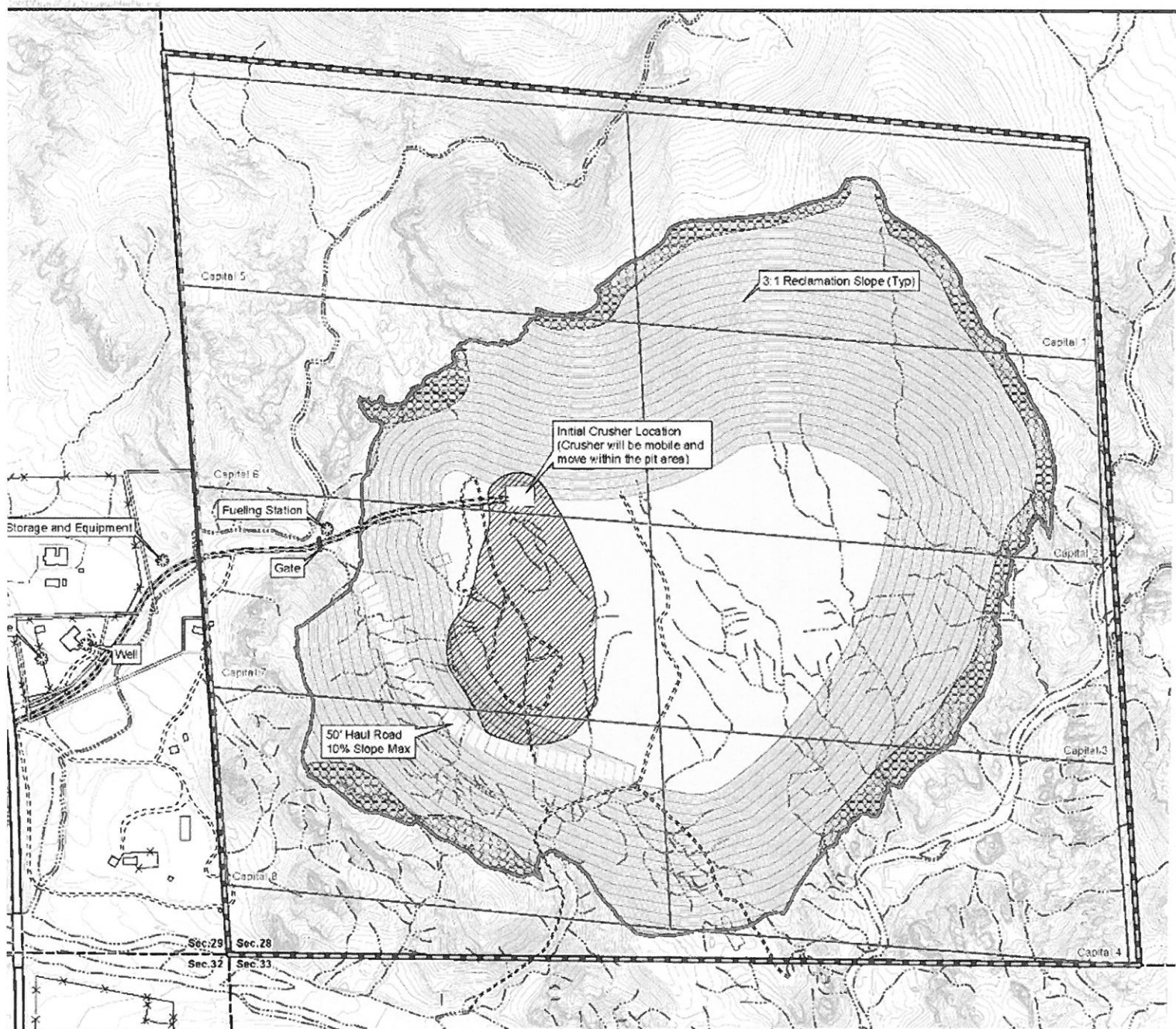
Name	Organization/ Role	Email
Amanda Best	Westland / PM	abest@westlandresources.com
Margaret Blais	Westland / Env. Specialists	mblais@westlandresources.com
Erik Christensen	" / Project Engineer	echristensen@westlandresources.com
Shelly Cave	BLM / Geologist	scave@blm.gov
Steve Rose	ADEQ / Air Quality	sar@azdep.gov
RYAN RANDELL	BLM / LAND LAW EXAMINER	rrandell@blm.gov
Naveen Saravanan	ADEQ / Inspections & Enforcement	ns3@azdeg.gov
Sharon + Gary Shader	Guests of KMC	Sjshader62@gmail.com
Cobey Hampton	KMC	CobeyHampton@yahoo.com
Corina Wilson	AI Burch	bluesapphireswicon@gmail.com
AI Burch	KMC / Proj. Man.	burchservices1@aol.com
BRIAN BUTTAZONI	DLM-PLANNER	bbuttazeni@blm.gov
Rem Hawes	BLM Hassayampa Field Manager	rhawes@blm.gov
Areta Zouvas	Kirkland Mining Co.	aretaz@kirklandmining.com
Brian Hampton	Kirkland Mining Co.	Brimoinaz@aol.com
James Holden	BLM - Range mgmt	jwholden@blm.gov
Penny Foreman	BLM Recreation / Visual	pforeman@blm.gov

# Mining and Reclamation Plan of Operations Kirkland High Quality Pozzolan Mine

BLM Meeting and Site Visit - May 24, 2017

# Goals of Meeting/Agenda

1. Team Introductions - Roles and Responsibilities
2. Project Overview
3. Communication Plan/Protocols
4. Preliminary NEPA Discussions
  - Scoping
  - Preliminary Supplemental Authorities and Other Resources Review
  - Project Schedule
5. Site Visit



T13N, R4W, Portions of Sections 28 & 29,  
Yavapai County, Arizona  
Data Source: Kirkland Mining Company, Burch, and BUM

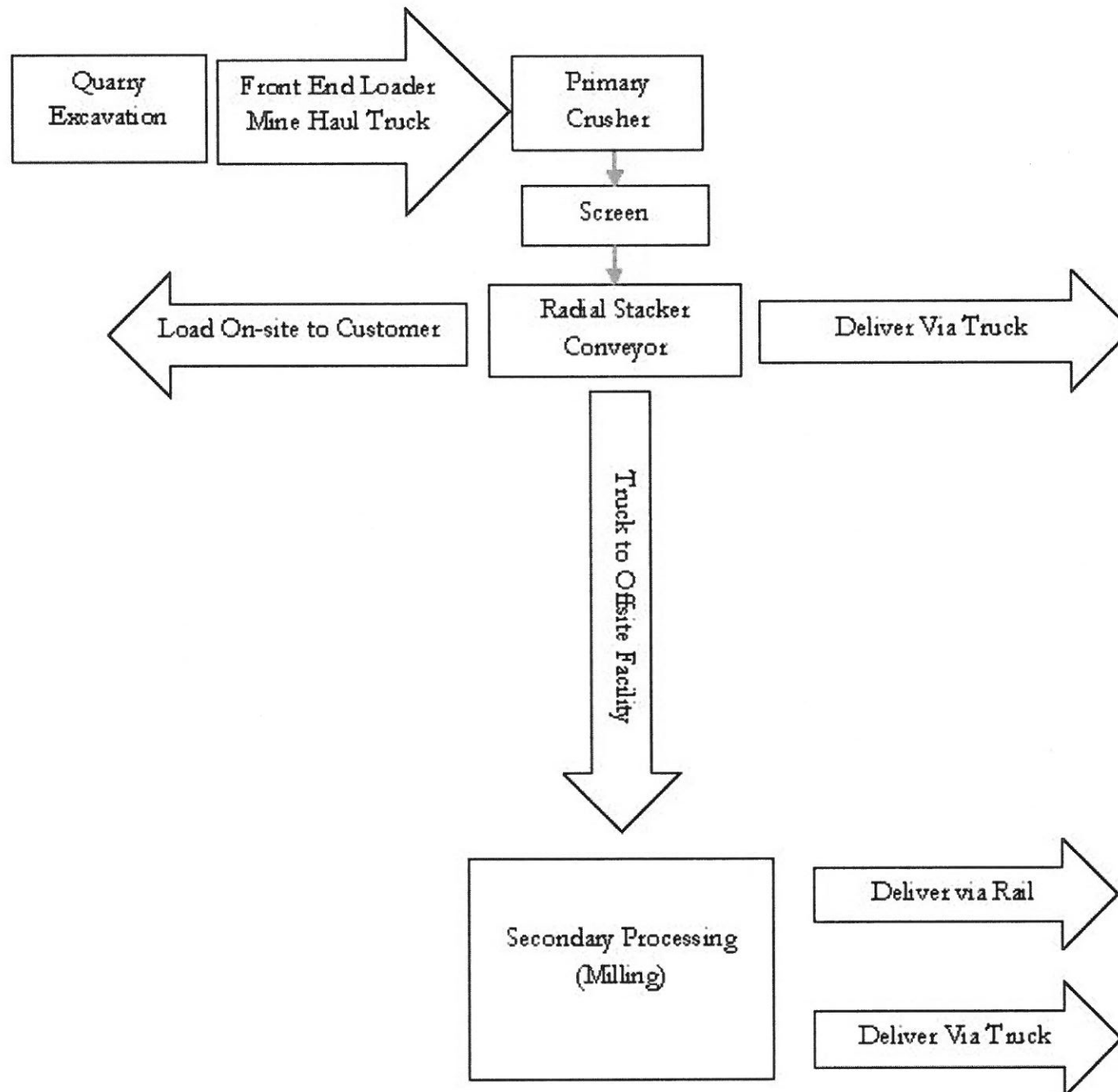
#### Legend

- Kirkland Mine Plan of Operations Area
- Capital Association Placer Mining Claim
- Unpatented Lode Claim
- Kirkland Mining Company Private Parcels
- Limits of Disturbance
- Overburden Stockpile Area
- Initial Impact Area
- Wash (Minimum Setback 50')
- Fence
- Entrance Road
- Dirt Road

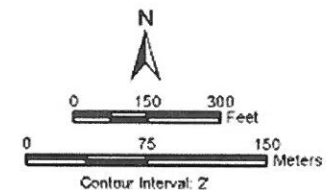
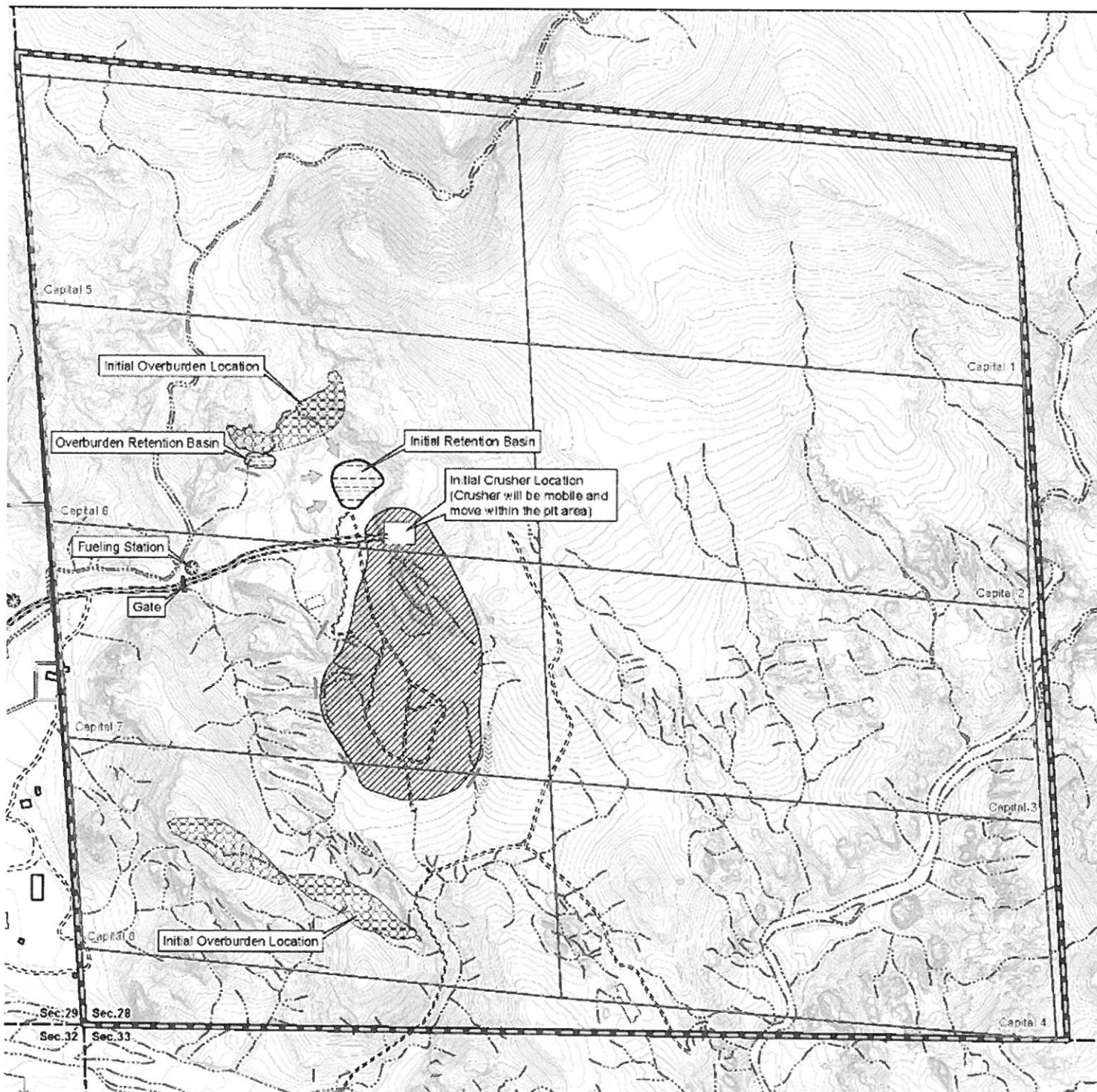
WestLand Resources

**KIRKLAND MINING COMPANY**  
Mining and Reclamation Plan of Operation  
Kirkland HQP Mine

CONCEPTUAL MINE PLAN  
Figure 9a







T13N, R4W, Portions of Sections 28 & 29,  
Yavapai County, Arizona.  
Data Source: Kirkland Mining Company, Burch, and BLM.

#### Legend

- Kirkland Mine Plan of Operations Area
- Capital Association Placer Mining Claim
- Unpatented Lode Claim
- Kirkland Mining Company Private Parcels
- Overburden Stockpile Area
- Initial Impact Area
- Retention Basin
- Berm
- Diversion Channel
- Wash (Minimum Setback 50')
- Fence
- Entrance Road
- Dirt Road

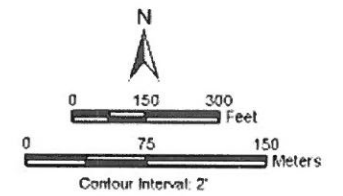
WestLand Resources

**KIRKLAND MINING COMPANY**  
Mining and Reclamation Plan of Operation:  
Kirkland HQP Mine

INITIAL MINE OPERATIONS

Figure 9b





T13N, R4W, Portions of Sections 28 & 29,  
Yavapai County, Arizona.  
Data Source: Kirkland Mining Company, Burch, and BLM

#### Legend

- Kirkland Mine Plan of Operations Area
- Capital Association Placer Mining Claim
- Unpatented Lode Claims
- Kirkland Mining Company Private Parcels
- Limits of Disturbance
- Offsite Watershed
- Wash (Minimum Setback 50')
- Fence
- Entrance Road
- Dirt Road

WestLand Resources

#### KIRKLAND MINING COMPANY Mining and Reclamation Plan of Operation: Kirkland HQP Mine

OFFSITE WATERSHEDS REQUIRING  
STORMWATER CONTROLS AT FULL BUILD OUT  
Figure 11



# Communication Plan/Protocols

- ◆ Roles and Responsibilities
- ◆ General Communication Process
- ◆ Project Cost and Timeline Schedule

# Scoping

- Issues Identification
- Internal Meeting with BLM ID Team/Resource Specialists
- Public Scoping
  - Open House
  - Mailing
  - BLM Website

# Resource Surveys

Biological Resources

Cultural Resources

# PRELIMINARY

## Supplemental Authorities

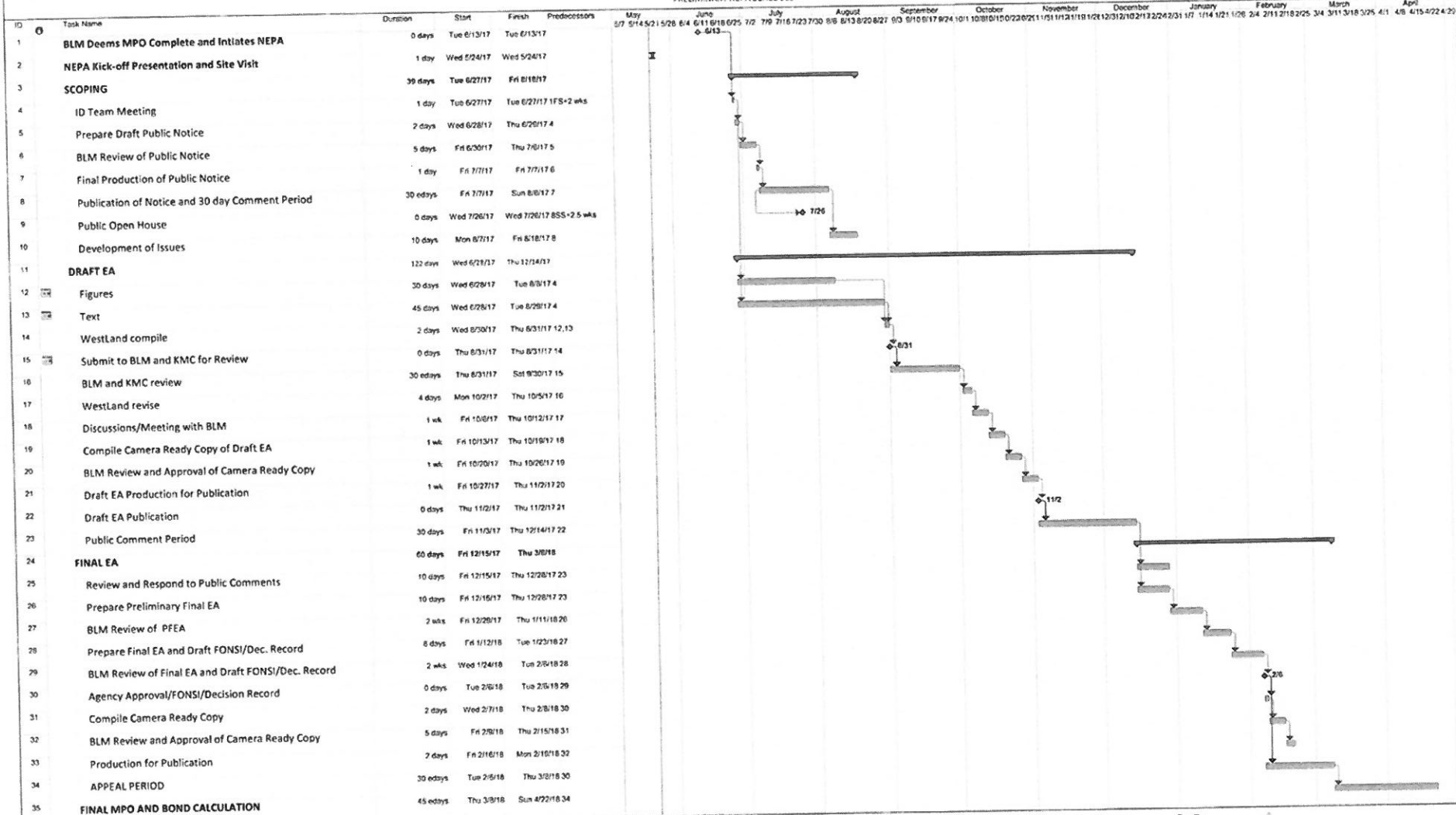
- ◆ Air Quality
- ◆ Cultural Resources
- ◆ Migratory Birds
- ◆ Solid Wastes
- ◆ Water Quality
  - ◆ Spill Prevention and Contingency
  - ◆ Stormwater Pollution Prevention

## Other Resources

- ◆ BLM Sensitive Species – Arizona Toad
- ◆ General Wildlife
- ◆ Minerals
- ◆ Recreation
- ◆ Socioeconomics
- ◆ Vegetation
- ◆ Visual Resources



KIRKLAND HIGH QUALITY POZZOLAN MINE  
PRELIMINARY NEPA SCHEDULE



Project: expedited BLM EA schedule  
Date: Tue 5/23/17

Task  
Split  
Milestone

Summary  
Project Summary  
External Tasks

External Milestone  
Inactive Task  
Inactive Task

Inactive Milestone  
Inactive Summary  
Manual Task

Duration-only  
Manual Summary Rollup  
Manual Summary

Start-only  
Finish-only  
Progress

Deadline