



U.S. Department of the Interior
Bureau of Land Management

Mining and Reclamation Plan of Operations

Kirkland Mining Company



PUBLIC SCOPING JUNE 2017



Open House Format

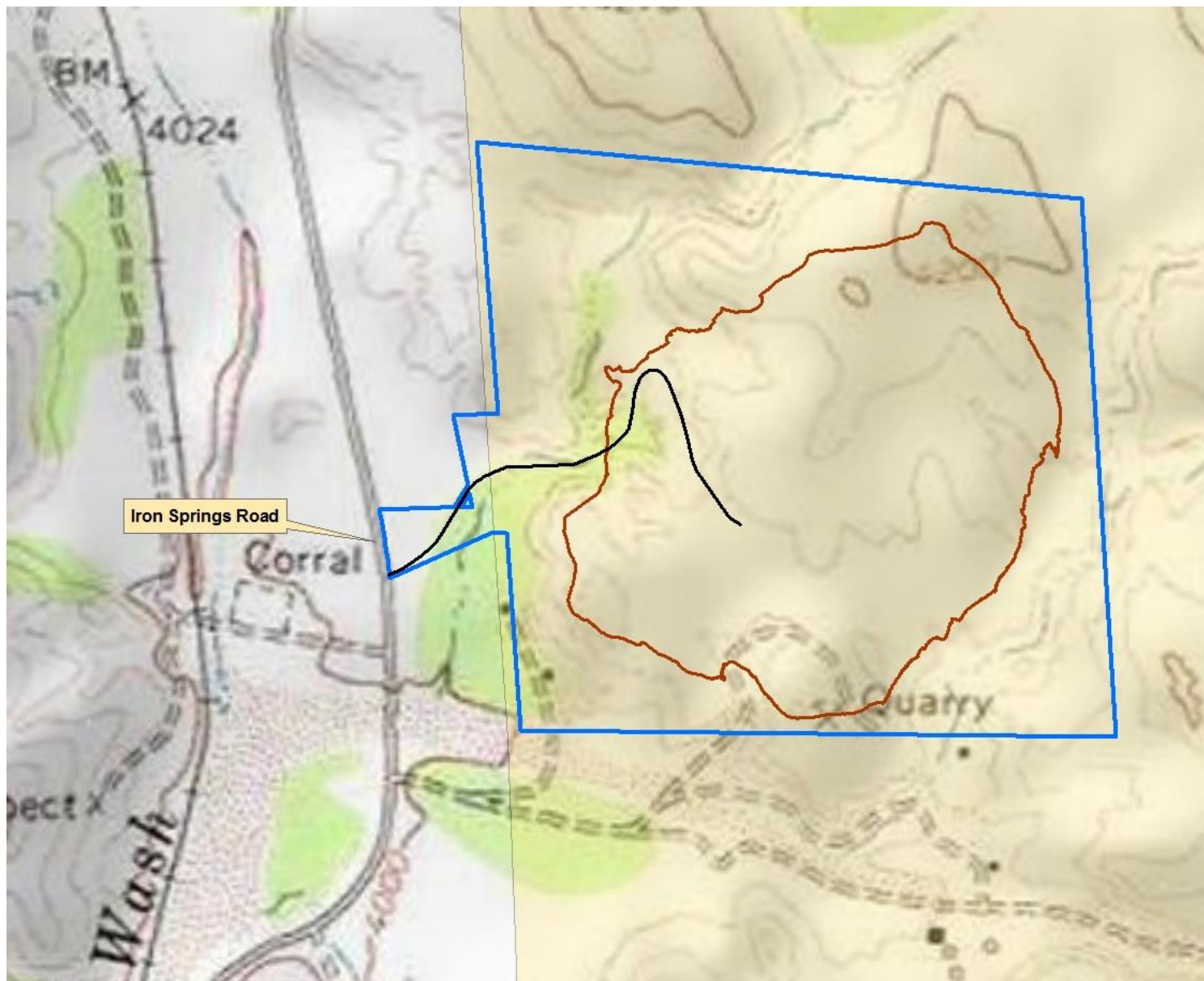
- Silence cell phones.
- Not a town hall.
- Listen with respect to others.
- Specialists area available at tables and posters until 8 pm to answer questions.



Multiple Use – Balance Point

The BLM manages approximately
12 million acres of public lands in Arizona for a variety of purposes.





160 acre project area; 76 acre mine footprint



Authorities

- “Uncommon variety” of high quality pozzolan is regulated under the General Mining Act of 1872.
- Federal Land Policy and Management Act requires the BLM to process the proposed mining and reclamation plan under 43 CFR 3809 regulations.



Mining and Reclamation Plan of Operations

- Front end loaders would be used to load the high quality pozzolan onto trucks;
- The high quality pozzolan would be crushed and screened on-site (primary processing);
- In approximately five years, production is anticipated to be approximately 500,000 tons of high quality pozzolan per year;



Mining and Reclamation Plan of Operations (cont'd)

- Depending on market demands during the first five years, there could be between 30 to 85 truck trips per day; and
- Overburden set aside during mining operations would be used for reclamation, which will include regrading and revegetation of disturbed areas.



Mining and Reclamation Plan of Operations – Not Included

- Blasting is not included in the Plan.
- There would be no on-site secondary processing; all materials would be taken off-site by haul trucks to various locations north or south of the mine site on Iron Springs Road for further processing.
- No use of chemicals in crushing and screening (primary processing) is being proposed.



Studies Completed

- Biological and cultural resource studies were completed spring of 2017.
- One cultural site, if adversely affected by the mine, would require mitigation under Section 106 of the National Historic Preservation Act.



Additional Permitting

Other agencies that may issue permits for this project:

US Army Corps of Engineers

Arizona Department of Environmental Quality

Yavapai County

Mine Safety and Health Administration

Arizona State Mine Inspector



Effective Comments

- Scoping comments will assist the BLM with the development of potential mitigation measures to reduce potential adverse effects from the project.
- Expressing support or opposition without the “why” are not valuable comments for the BLM to consider.



Next Steps

- An environmental assessment to assess the project's potential direct, indirect and cumulative impacts will be prepared.
- Anticipated in early 2018.
- The BLM will hold a second 30-day public comment period and open house.



U.S. Department of the Interior
Bureau of Land Management

Comment Period Ends on July 25

You can email comments to:

KIRKMPO@BLM.GOV

For More Information, Go the Project Website at:

<http://bit.ly/2rRYTII>



U.S. Department of the Interior
Bureau of Land Management

Mining and Reclamation Plan of Operations

Kirkland Mining Company



PUBLIC SCOPING JUNE 2017