



CLEAR CREEK, SWASEY AND MULE RIDGE TRAILS

Bureau of Land Management Redding Field Office - (530) 224-2100 - 6640 Lockheed Dr. Redding, CA 96002

PROHIBITED ACTS ON PUBLIC LANDS

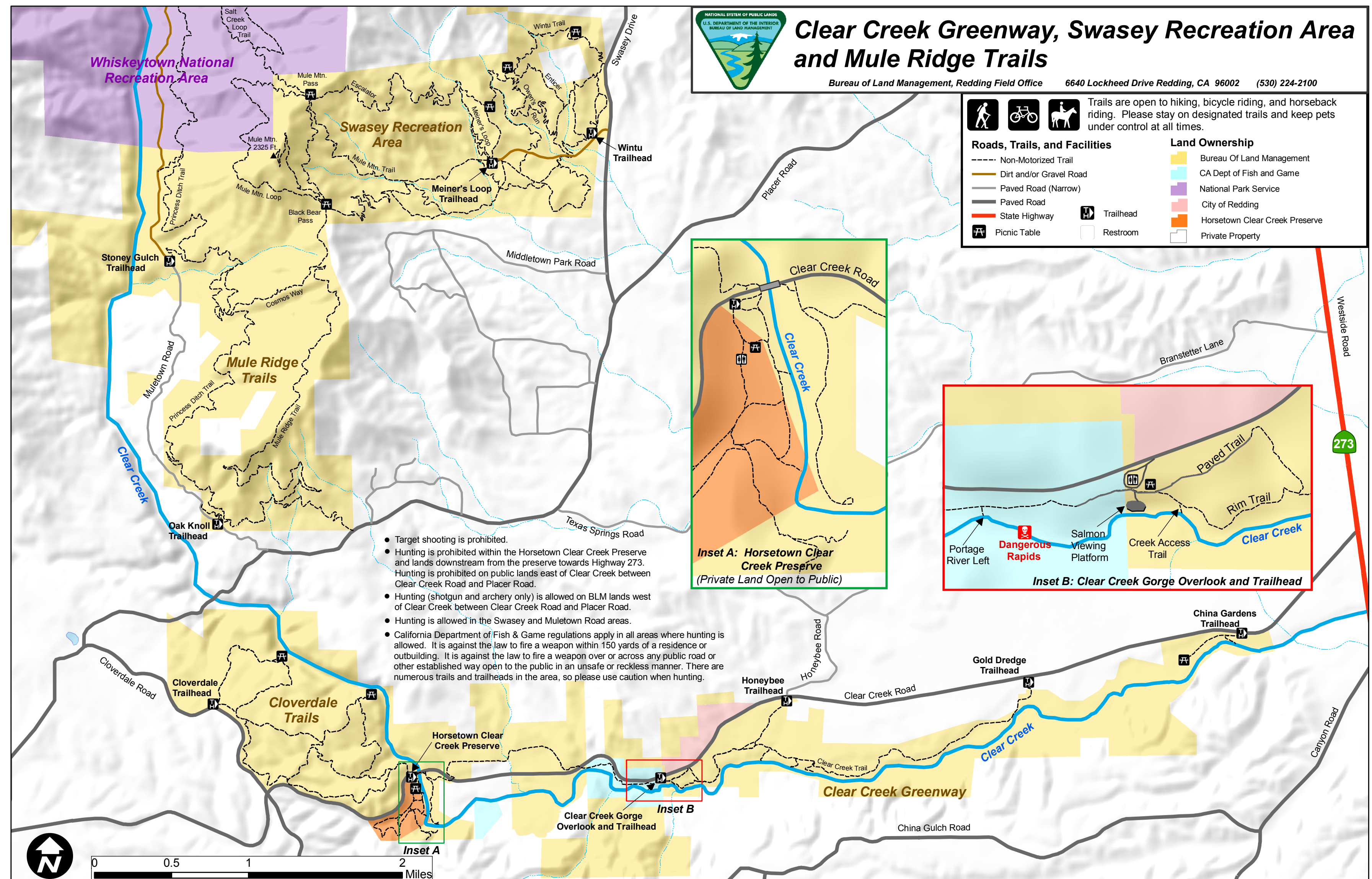
Persons performing the following prohibited acts may be subject to civil and criminal penalties:

- Littering: [43 CFR 4140.1(b)(6)] or Dispose of any garbage except in designated places or receptacles [43 CFR 8365.1-1(b)(1)];
- Cutting, burning, spraying, destroying, or removing vegetation without BLM authorization. (BLM permit required for any cutting, spraying, removing of vegetation/fuelwood and/or firewood); [43 CFR 4140.1(b)(3)]
- Hunting or fishing in violation of State or Federal laws; [43 CFR 9264.1(h)] or Harming or removing animals protected by the Endangered Species Act or other applicable legislation, [43 CFR 9264.1(h)]
- Damaging or removing U.S. property without authorization; [43 CFR 4140.1(b)(4)]
- Interfering with uses or users authorized by BLM on public lands; [43 CFR 4140.1(b)(7)]
- Drain sewage or petroleum products or dump refuse or waste other than wash water from any trailer or other vehicle [43 CFR 8365.1-1(b)(3)]; Dispose of any refuse or waste brought from private or municipal property [43 CFR 8365.1-1(b)(4)]; or Pollute or contaminate water supplies or water used for human consumption [43 CFR 8365.1-1(b)(5)];
- Defacing, disturbing, destroying or removing personal property, structures, livestock, archaeological resources, mineral resources or any natural resources on or from the public lands without BLM a authorization [43 CFR 8365.1-5(a)(1)]
- No person may excavate, remove, damage, or otherwise alter or deface, or attempt to excavate, remove, damage, or otherwise alter or deface an archaeological resource located on public lands unless such activity is pursuant to a permit issued under 43 CFR 43 7.4, 7.5(b), 7.8 of this part, or 16 USC 470 ec.
- The possession of an assault weapon as defined by State law is prohibited on BLM lands.
- Special Recreational Use Permits required for commercial, non-commercial, competitive, and organized group activities or events [43 CFR 8372.1-1]. Contact the Redding BLM Office. (530) 224-2100.
- No person shall cause a public disturbance or create a risk to others persons on public lands by engaging in activities which include, but are not limited to: Making unreasonable noise [43 CFR 8365.1-4(a)(1)]; or Creating a hazard or nuisance [43 CFR 8365.1-4(a)(2)]; or Refusing to disperse, when directed to do so by an authorized officer [43 CFR 8365.1-4(a)(3)]; or Interfering with any BLM employee or volunteer engaged in the performance official duties [43 CFR 8365.1-4(a)(4)];
- No person shall cultivate, manufacture, deliver, distribute, or traffic a control substance on public lands [43 CFR 8365.1-4(b)(1)]; or possess a control substance [43 CFR 8365.1-4(b)(2)].
- No person under 21 years of age may possess alcoholic beverages on public lands [43 CFR 8365.1-6];
- Perform any act restricted by Fire Prevention Orders [43 CFR 9212.1(h)].

Vehicles

- The use or operation of any motorized vehicle on public lands must conform to all rules, regulations and vehicle codes of the State of California [43 CFR 8341.1(d)].
- The operation of motorized vehicles on public lands is permitted only within those areas and on those routes designated as open to motorized vehicle use [43 CFR 8341.1(a)]
- No person will operate a motor vehicle in a reckless, careless, or negligent manner [43 CFR 8341.1(f)(1)];
- No person will operate a motor vehicle under the influence of drugs or alcohol [43 CFR 8341.1(f)(3)];
- No person shall drink or have in their possession an open container of alcoholic beverages while riding in or operating a motor vehicle [43 CFR 8365.1-6].

ANY PERSON CONVICTED OF COMMITTING ANY PROHIBITED ACT MAY BE SUBJECT TO A FINE NOT TO EXCEED \$100,000 AND/OR IMPRISONMENT NOT TO EXCEED 12 MONTHS.



AREA SPECIFIC REGULATIONS

Clear Creek Greenway

All BLM lands within Clear Creek Greenway are **closed to camping**, target shooting, and motorized vehicle use, target shooting and hunting. Mineral collection with motorized or mechanized equipment is prohibited. Low-impact mineral collection is allowed with hand tools only (shovel, pick, pan, sluice, etc.) See local BLM office for more details.

43 CFR 8364.1

Cloverdale Trails

Cloverdale Trails are **closed to camping**, target shooting, and motorized vehicles. Hunting is allowed by shotgun and archery only.

43 CFR 8364.1, 43 CFR 8342



Mule Ridge Trails

All BLM lands within Mule Ridge Trails are closed to motorized vehicle use.

43 CFR 8342

Swasey Recreation Area

All BLM lands within Swasey are closed to motorized vehicle use and target shooting. **Camping and night time use is prohibited, except by Special Recreation Permit.**

43 CFR 8364.1



WATER FLOWS AND BOATING INFORMATION

The upper-most section of Clear Creek starts at the NEED Camp bridge, about two miles below Whiskeytown Dam in Whiskeytown National Recreation Area and ends at the Placer Street high bridge over Clear Creek. This 5.5 mile section is very remote, rugged, and undeveloped canyon with several class IV rapids and one class V- rapid. All these rapids can be scouted or portaged with some difficulty.

From Placer Street two miles down to the Clear Creek Road bridge at Horseshoe Clear Creek Preserve, the creek is easier and the rapids only reach a difficulty of class III+. This section is also remote and it would be very difficult to hike out of this steep-walled canyon.

These two upper runs can be done with flows down to about 200cfs. The upper flow limit is dependent on the skill level of the individual boater.

The two mile section, from Clear Creek Road bridge down to just above the Clear Creek "Saeltzer" Gorge, is fairly mild with class I rapids. **Be sure to take out where Clear Creek Road nears the creek immediately before the steep, rocky, dangerous Class VI gorge.**

DO NOT ATTEMPT TO PADDLE OR FLOAT THIS UNRUNNABLE GORGE!

Just downstream from the Salmon Viewing Platform there is an access trail to the creek. From here down to Highway 273, it is a 6-mile float characterized by thick creek-side vegetation, abundant wildlife and some class I rapids. The ACID canal siphons under the creek below China Gardens and running it may require more than class I skills. There is a rocky rapid at the Highway 273 bridge, which may reach class III in difficulty, depending on the flow.