

U.S. DEPARTMENT OF THE INTERIOR—BUREAU OF LAND MANAGEMENT

Jimmy Smith and Snake Ridge Trails

BLM Challis Field Office, Idaho



MAP LEGEND

- STREAM / RIVER
- LAKE OR RESERVOIR

SURFACE MANAGEMENT AGENCY

- BUREAU OF LAND MANAGEMENT (BLM)
- FOREST SERVICE (USFS)
- PRIVATE LAND
- STATE OF IDAHO LAND

ROUTES

- HIGHWAY
- ROAD: Roads are open to all motorized and non-motorized use unless specified otherwise. Portions of all roads are rocky, unimproved and may require a high-clearance vehicle.
- PRIMITIVE ROAD: A route managed for use by four-wheel drive or high-clearance vehicles. Primitive roads do not normally meet any BLM road design standards. These roads are open to all motorized and non-motorized use unless specified otherwise.
- ATV TRAIL (vehicles 50" wide or less)
- MOTORCYCLE TRAIL (single track)
- NON-MOTORIZED TRAIL
- FOREST SERVICE ROAD OR TRAIL (refer to USFS Motor Vehicle Use Maps from each Ranger District)

MAP SCALE 1:100,000 / CONTOUR INTERVAL = 200 feet

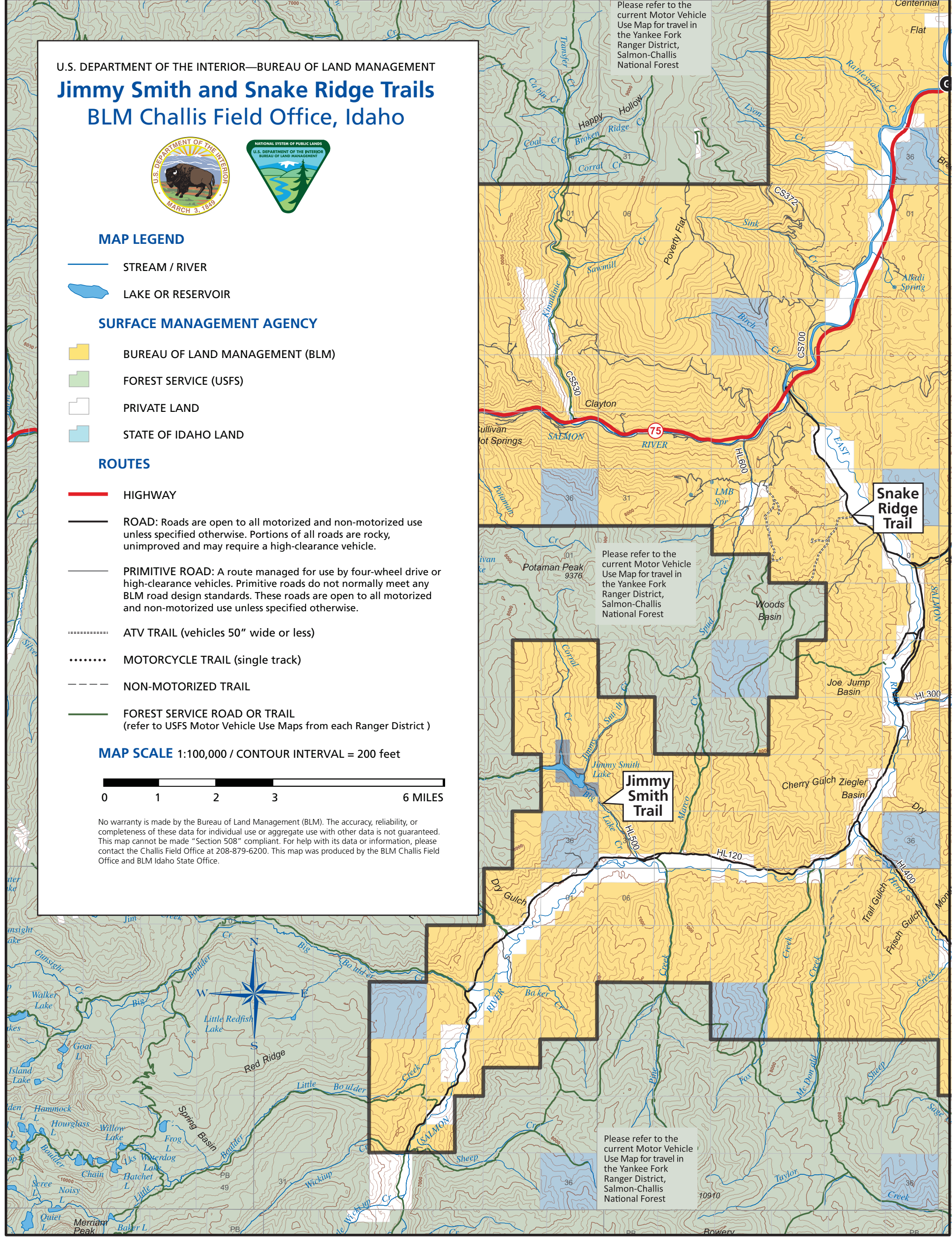


No warranty is made by the Bureau of Land Management (BLM). The accuracy, reliability, or completeness of these data for individual use or aggregate use with other data is not guaranteed. This map cannot be made "Section 508" compliant. For help with its data or information, please contact the Challis Field Office at 208-879-6200. This map was produced by the BLM Challis Field Office and BLM Idaho State Office.

Please refer to the current Motor Vehicle Use Map for travel in the Yankee Fork Ranger District, Salmon-Challis National Forest

Please refer to the current Motor Vehicle Use Map for travel in the Yankee Fork Ranger District, Salmon-Challis National Forest

Please refer to the current Motor Vehicle Use Map for travel in the Yankee Fork Ranger District, Salmon-Challis National Forest



Snake Ridge Trail

Jimmy Smith Trail