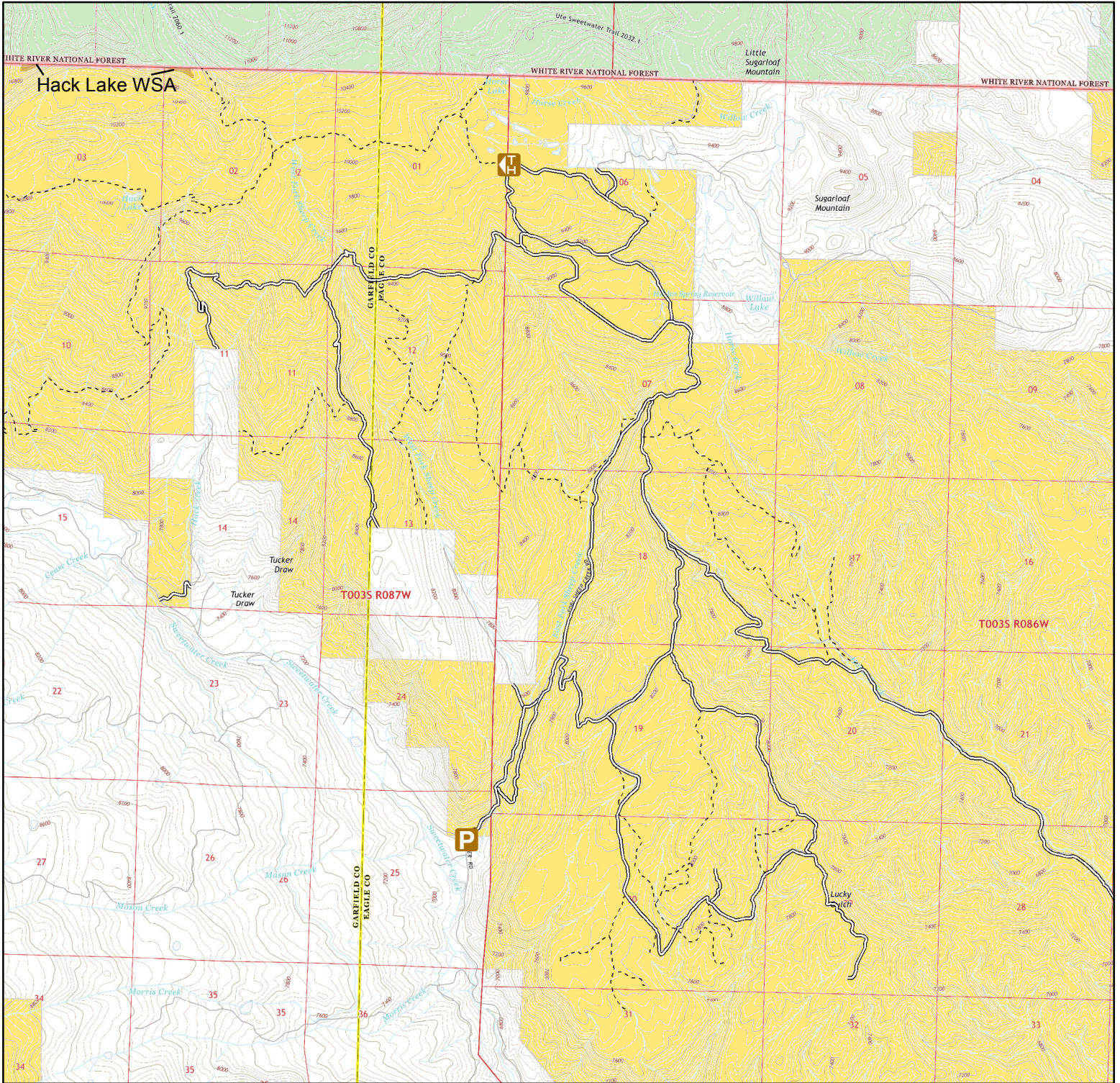




Hack Lake- Colorado River Valley Field Office



Sheep Creek Parking Area



Hack Lake Trailhead

BLM Routes

----- Open to Hikers, Equestrian, and Livestock

===== Open to all Modes of Transportation



Wilderness Study Area



Bureau of Land Management



Private



US Forest Service

No warranty is made by the Bureau of Land Management as to the accuracy, reliability, or completeness of these data for individual use or aggregate use with other data, or for the purposes not intended by the BLM. Spatial information may not meet National Map Accuracy Standards. This information may be updated without notification.